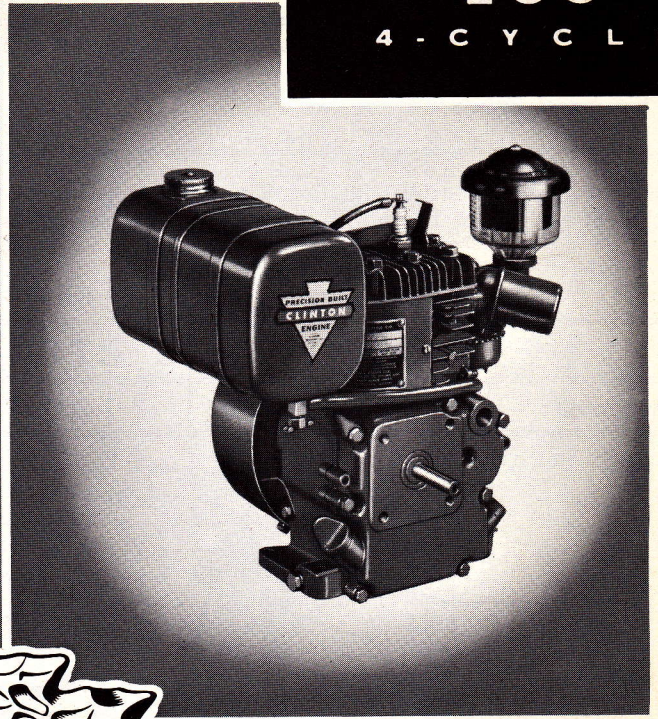
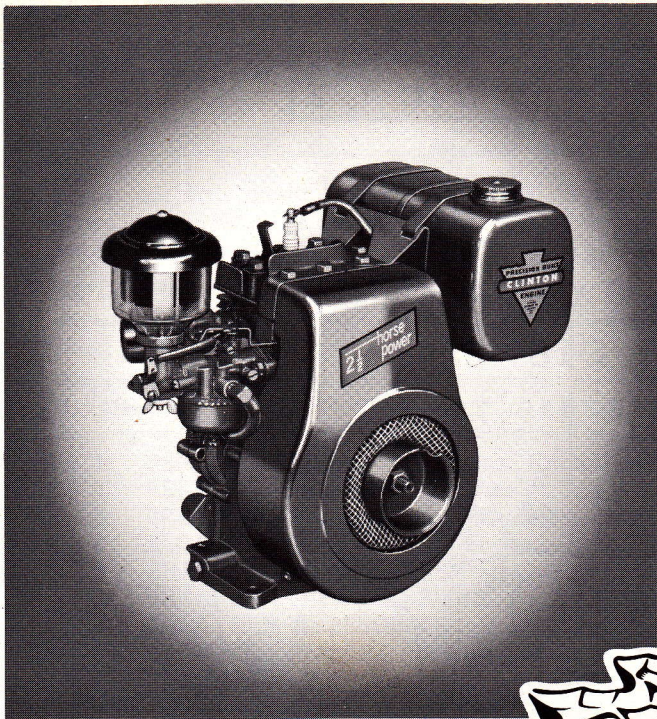


S E R I E S
100
 4 - C Y C L E



A Wide Range of Models are Made By

CLINTON

For Farm, Home and Industrial Use.

100

H.P.	R.P.M.
1.45.....	2200
2.0.....	2800
2.5.....	3600

GENERAL SPECIFICATIONS

Model	Type	Description	Starter	Weight
100	4-Cycle Air Cooled	Horizontal Shaft	Rope or Recoil	19

BORE: 2 $\frac{3}{8}$ "

STROKE: 1 $\frac{5}{8}$ "

TYPE: 4 cycle, single cylinder, L-Head, air-cooled.

AIR-COOLED: Large capacity, curved vane blower cast integral with fly-wheel. Air passes through deep fins to maintain correct operating temperature.

PISTON DISPLACEMENT: 7.2 cubic inches.

IGNITION: Very high voltage, built-in fly-wheel magneto for faster starting. Moisture and dust proof with fully enclosed ignition points.

SPARK PLUG: 14 m.m.

LUBRICATION: Splash type. Oil drainage permitted from either side of base.

CARBURETOR: Full float feed with idle and high speed adjustment.

GOVERNOR: Adjustable air velocity type.

MAIN BEARINGS: Bronze.

CRANKSHAFT: Arma steel, induction heat-treated. Counterweights and cam gear drive integral with shaft.

CONNECTING ROD: I-Beam, aluminum alloy with extra large bearings.

PISTON: Aluminum alloy Clinton-engineered for efficient combustion.

PISTON RINGS: Two compression and one oil control. Treated surfaces.

VALVES: Forged steel. Exhaust valve provided with heat-resistant alloy head.

VALVE SEATS: Alloy inserts.

VALVE TAPPETS: Hardened and ground.

CYLINDER AND CRANKCASE: Die cast cylinder block and crankcase with large amount of cooling area for cool operation. A close-grained cast iron liner is die cast in block.

CYLINDER HEAD: Aluminum, removable with extra deep cooling fins.

OIL FILLER: Conveniently located for easy check of oil level and for filling.

AIR CLEANER: Visible oil bath type.

FUEL TANK: 2 quart capacity, with gasoline strainer and shut-off.

OIL RESERVOIR: One pint capacity.

DIRECTION OF ROTATION: Counter-clockwise, viewed from power take-off shaft side.

FINISH: Heat resistant, red enamel. Other colors available upon request.

STANDARD EQUIPMENT

Standard equipment includes: Down-draft oil bath air cleaner, dust and moisture-proof, high voltage, flywheel magneto, float feed carburetor and fuel tank, muffler, blower housing screen, rope starter.

SPECIAL EQUIPMENT

Special equipment includes: Remote governor controls, throttle control cables and stop, recoil starter.

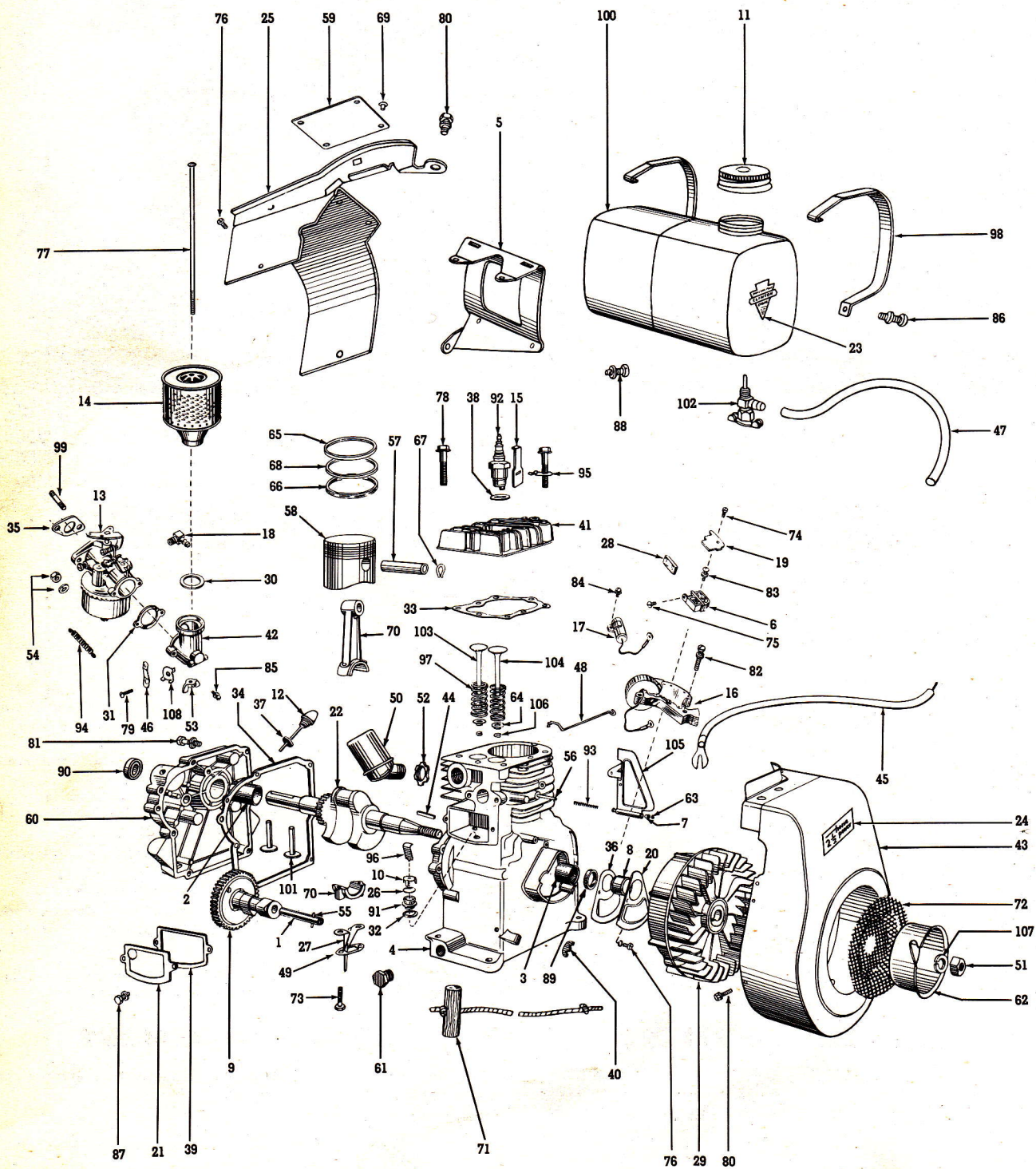


MANUFACTURED IN A WIDE RANGE OF 2-CYCLE AND 4-CYCLE MODELS

CLINTON ENGINES PROVIDE POWER

FOR FARM • HOME • INDUSTRIAL EQUIPMENT

PRINTED IN U.S.A.



CLINTON

S E R I E S
100
4 - C Y C L E

**BASIC
TYPES**

SEC. II, DIV. 100
PARTS CATALOG
Revised March, 1956
Supersedes Dec., 1955

There are two Basic Types of the 100 Engine covered by this Basic Parts List. Parts not used on all types are listed. These types are as follows: Serial Number Suffix "A" — referred to as "Type A"; Serial Number Suffix "B" — referred to as "Type B."

NOTE: See page "a" on "How to Identify Your Clinton Engine."

BASIC PARTS LIST

Ref. No.	PART DESCRIPTION	Part No.	Quantity
1	AXLE ASSEMBLY — Camshaft (Includes Pin).....	21310-A	1
2	BEARING — Sleeve (Plate Ass'y).....	21016	1
3	BEARING — Main, Sleeve (Cylinder Block).....	10380	1
4	BLOCK ASSEMBLY — Cylinder.....	10201-A	1
5	BRACKET — Fuel Tank Mounting.....	21352	1
6	BREAKER POINTS ASSEMBLY.....	P5543	1
	BREATHER ASSEMBLY.....	6330	1
	NOTE: Breather Assembly includes Ref. Nos. 10, 26, 32, 91, 96.		
7	BUSHING — Air Vane.....	7239	2
8	CAM — Magneto Breaker.....	10316	1
9	CAMSHAFT.....	21008	1
10	CAP — Breather.....	7155	1
11	CAP & GASKET ASSEMBLY — Fuel.....	7440-A	1
12	CAP & GASKET ASSEMBLY — Oil Filler.....	21074-A	1
13	CARBURETOR ASSEMBLY — Clinton (used on Type A).....	14009	1
	CARBURETOR ASSEMBLY — Clinton (used on Type B).....	14010	1
14	CLEANER ASSEMBLY — Air.....	4546-A	1
15	CLIP — Ignition Shorting.....	10368	1
16	COIL ASSEMBLY — Magneto (w/Laminations).....	P5545	1
	COIL — Magneto (w/o Laminations).....	P5538	1
17	CONDENSER — Magneto.....	P7219-1	1
18	CONNECTOR — 90° Flex. Fuel Line (Carburetor).....	5052	1
19	COVER — Breaker Points Assembly.....	P5544	1
20	COVER — Dust, Magneto Breaker Points.....	10382	1
21	COVER — Valve Chamber.....	10324	1
22	CRANKSHAFT.....	21100	1
23	DECAL — Arrowhead.....	3579	2
24	DECAL — Horsepower.....	10010	1
25	DEFLECTOR ASSEMBLY — Air, Cylinder.....	10006	1
26	DISC — Breather.....	7152	1
27	DISTRIBUTOR — Oil.....	21073	1
28	FELT — Lubrication, Cam Follower.....	P5504	1
29	FLYWHEEL ASSEMBLY — With Magnets.....	5710-A	1
30	GASKET — Air Horn to Air Cleaner.....	10259	1
31	GASKET — Air Horn to Carburetor.....	3990	1
32	GASKET — Breather.....	7153	1
33	GASKET — Cylinder Head.....	10253	1
34	GASKET — Engine Base.....	10254	1
35	GASKET — Asbestos (Carburetor to Block).....	6002	1
36	GASKET — Cover, Dust (Breaker Points).....	10250	1
37	GASKET — Oil Filler Cap.....	3297	1
38	GASKET — Spark Plug.....	3115	1
39	GASKET — Valve Chamber Cover.....	10251	1
	GASKET KIT — Engine Overhaul.....	6329	1
40	GROMMET — Magneto (Breaker Lead Wire).....	10367	1
41	HEAD — Cylinder.....	10011	1
42	HORN — Air.....	21350	1
43	HOUSING ASSEMBLY — Blower.....	21000-A	1
44	KEY — Flywheel.....	10339	1
45	LEAD — Hi-Tension, Magneto.....	P2055	1
46	LEVER — Speed Adjusting.....	4441	1
47	LINE — Fuel, Flex.....	6340	1
48	LINK — Carburetor to Air Vane.....	21020	1
49	LOCK — Double, Connecting Rod Screw.....	21318	1

CLINTON

S E R I E S
100
4 - C Y C L E

BASIC
TYPES

BASIC PARTS LIST (Continued)

Ref. No.	PART DESCRIPTION	Part No.	Quantity
50	MUFFLER — (45° Inlet)-----	4500	1
51	NUT — Hex. 7/16-20 (Starter Pulley)-----	3250	1
52	NUT — Lock, Muffler-----	4425	1
53	NUT — Wing (Air Cleaner)-----	7044	1
54	NUT & LOCKWASHER ASSEMBLY — ¼-28 Hex.-----	3255-A	1
55	PIN — Camshaft Axle-----	10392	1
56	PIN — Pivot, Air Vane Governor-----	7238	1
57	PIN — Wrist-----	6024	1
58	PISTON — Standard-----	10001	1
	PISTON ASSEMBLY — Standard-----	10001-A	1
	NOTE: Piston Assemblies are available in the following oversizes: .005, .010, .020, .030, and .040. Order by Part Number and Specify Oversize.		
	NOTE: Piston Assembly includes Ref. Nos. 57, 58, 65, 66, 67, 68.		
59	PLATE — Name-----	6530	1
60	PLATE ASSEMBLY — Bearing-----	10060-B	1
61	PLUG — ¼ N.P.T. (Oil Drain)-----	3289	2
62	PULLEY — Starter-----	3299	1
63	RETAINER — Air Vane-----	4430	1
64	RETAINER — Valve Spring-----	3028	2
65	RING — Compression, Standard-----	6026	1
66	RING — Oil, Standard-----	6006	1
67	RING — Retainer, Wrist Pin-----	6034	2
68	RING — Scraper, Standard-----	6027	1
	RING SET — Standard-----	10023	1
	NOTE: Ring Sets are available in the following oversizes: .005, .010, .020, .030, and .040. Order by Part Number and Specify Oversize.		
	NOTE: Ring Set includes Ref. Nos. 65, 66, 68.		
69	RIVET — Tubular (Name Plate)-----	5460	6
70	ROD ASSEMBLY — Connecting-----	10002-A	1
71	ROPE ASSEMBLY — Starter-----	4266	1
72	SCREEN — Revolving-----	7187	1
73	SCREW — H.H.C. ¼-28 x 1½ (Connecting Rod Cap)-----	5635	2
74	SCREW — P.H.S.T. #6-32 x ¾ (Cover, Breaker Points)-----	5617	1
75	SCREW — R.H.M. #6-32 x ¼ (Breaker Points Terminal)-----	5664	1
76	SCREW — S.H.H.S.T. #8-32 x ¾ (2—Deflector to Block; 2—Dust Cover to Block)-----	5644	4
77	SCREW — R.H.M. #10-24 x 6¼ (Air Cleaner to Air Horn)-----	5636	1
78	SCREW — H.W.H. 5/16-18 x 1½ (Cylinder Head to Block)-----	5654	8
79	SCREW SHOULDER — 10-32 x ¾" (Lever, Speed Adjusting)-----	4440	1
80	SCREW & LOCKWASHER ASSEMBLY — H.H.C. ¼-20 x ⅝ (1—Deflector to Block; 2—Blower Housing to Block)-----	3632-G	3
81	SCREW & LOCKWASHER ASSEMBLY — H.H.C. ¼-20 x 1¼ (Bearing Plate to Block)-----	5613-G	3
82	SCREW & LOCKWASHER ASSEMBLY — P.H.S.T. #10-24 x 1 (Laminations to Block)-----	5430-A	2
83	SCREW & LOCKWASHER ASSEMBLY — R.H.M. #6-32 x 5/16 (Breaker Points to Block)-----	5444-F	1
84	SCREW & LOCKWASHER ASSEMBLY — R.H.M. #8-32 x ¾ (Condenser to Block)-----	5644-A	1
85	SCREW & LOCKWASHER ASSEMBLY — R.H.M. #8-32 x ¾ (Air Horn to Carburetor)-----	7113-A	2
86	SCREW & LOCKWASHER ASSEMBLY — R.H.M. #10-23 x 1 (Blower Housing to Tank Straps)-----	5421-A	2
87	SCREW & LOCKWASHER ASSEMBLY — S.H.H.C. #10-24 x ½ (Valve Chamber Cover)-----	5645-A	2
88	SCREW & LOCKWASHER ASSEMBLY — H.H.C. ¼-20 x 1¾ (Tank Bracket to Block)-----	5663-G	1

CLINTON

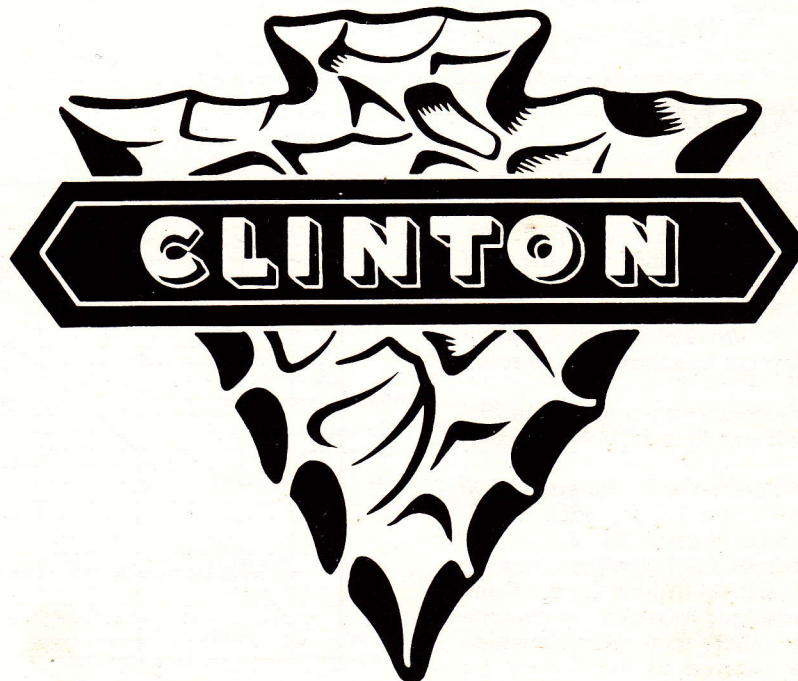
S E R I E S
100
4 - C Y C L E

BASIC
TYPES

SEC. II, DIV. 100
PARTS CATALOG
Revised March, 1956
Supersedes Dec., 1955

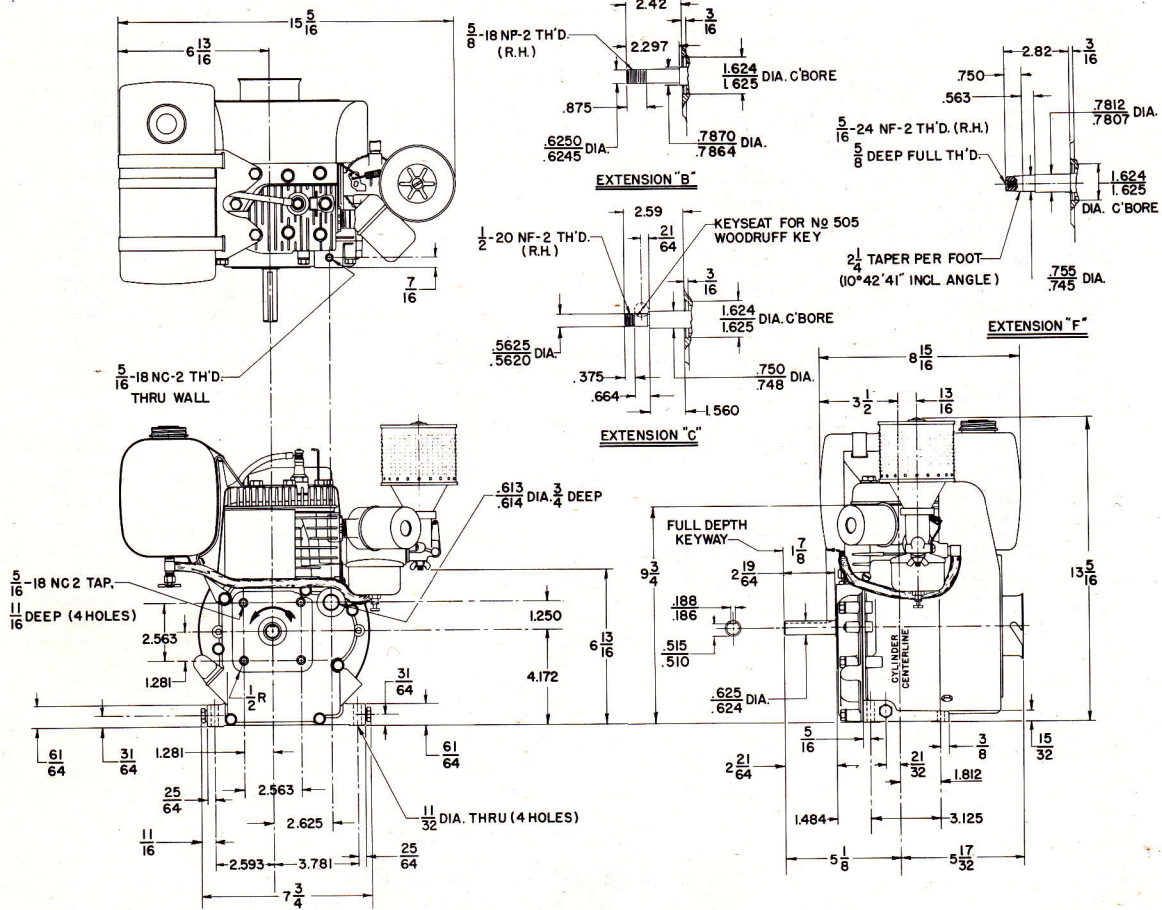
BASIC PARTS LIST (Continued)

Ref. No.	PART DESCRIPTION	Part No.	Quantity
89	SEAL — Oil (Block) -----	10012	1
90	SEAL — (Bearing Plate Assembly) -----	3026	1
91	SEAT — Breather -----	4438	1
92	SPARK PLUG & GASKET ASSEMBLY -----	16303-A	1
93	SPRING — Compression (Air Vane) -----	10005	1
94	SPRING — Air Governor -----	10336	1
95	SPRING — Ignition Shorting Clip -----	10369	1
96	SPRING — Breather Hold-Down -----	10381	1
97	SPRING — Valve -----	3068	2
98	STRAP — Fuel Tank -----	7943	2
99	STUD — Carburetor Mounting -----	5659	2
100	TANK ASSEMBLY — Fuel -----	21051	1
101	TAPPET — Valve -----	10009	2
102	VALVE — Fuel Shut-Off, Flex. Line -----	5051	1
103	VALVE — Exhaust -----	10301	1
104	VALVE — Intake -----	10302	1
105	VANE — Air Governor -----	10393	1
106	WASHER — "C," Valve Keeper -----	3291	2
107	WASHER — Lock, 7/16 (Starter Pulley) -----	3275	1
108	WASHER — Spring Tension (Throttle Lever) -----	21305	1



DIMENSIONAL SPECIFICATIONS AND POWER DATA

Detailed prints and engineering counsel are available. Specifications and Dimensions are subject to change without notice.



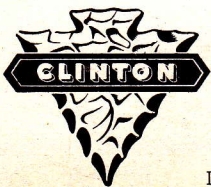
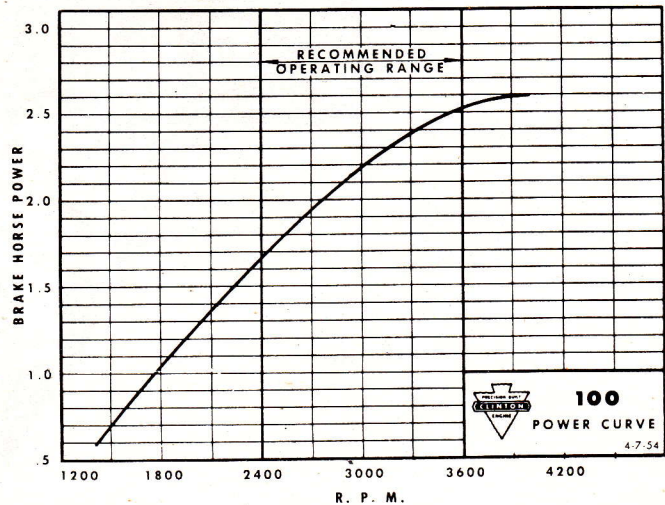
POWER DATA

The performance and power analysis figures for the Clinton Engine series show the rated Brake Horse Power developed from test-run engines. The standard engine equipped with standard air cleaner and muffler was used, in every case, for these tests and the figures have been corrected for barometer at sea level and temperature of 60° F. Production engines when shipped will develop not less than 85% of rated B.H.P.

Production engines, after run-in to reduce friction will develop not less than 95% of the rated B.H.P.

Engine power will decrease 3% for each 1,000 feet above sea level, and 1% for each 10° F. above standard temperature of 60° F.

Unless otherwise specified, governors are set to operate at 3,300 R.P.M. without load. Complete details of installations requiring continuous operation at other than recommended speeds should be referred to the factory for approval.



CABLE ADDRESS: ENGINES U. S. A.
 ENGINE DIVISION OF **CLINTON MACHINE CO.**
 MAQUOKETA, IOWA

MODEL VARIATIONS OF 100 SERIES

The adaptation of Clinton Engines to a wide variety of uses results in what is known as "Model Variations." Following is the complete list of all Models produced up to issue date (shown above). Opposite each Engine Model listed are the Part Numbers and/or Assembly Numbers for the Series used IN ADDITION TO or IN PLACE OF the parts illustrated and shown on the Basic Parts List preceding this Model Variations List. Refer to other sections of this Manual when Assembly Numbers are given to find the Parts List for these assemblies.

See page (a) on "How to Identify Your Clinton Engine." Use the preceding Basic Parts List except as shown below.

	ENGINE MODEL—See page (a), "How to Identify Your Clinton Engine."					
	FOOTNOTES (Check bottom of page).					
	BASE—ENGINE (Part Numbers Shown). Refer to Sec. IV, Div. A for further information.					
	CONTROL GROUP (Control Group Illustration numbers shown). Refer to Sec. III, Div. D for Parts List.					
	CONTROL CABLE LENGTH, replacement cable is furnished in 72" length ONLY, cut to length shown.					
	CRANKSHAFT (Part Numbers Shown). Refer to Sec. IV, Div. B for details and further information.					
	STARTER—RECOIL (Assembly Numbers Shown). Refer to Sec. III, Div. H for Parts List.					
	HOUSING ASSEMBLY—BLOWER (Part Numbers Shown). Refer to Basic Parts List for corresponding part.					
	BLOCK ASSEMBLY—CYLINDER (Part Numbers Shown). Refer to Illustrated Basic Parts List for corresponding part.					
	REDUCTION GEAR (Assembly Numbers Shown). Refer to Sec. III, Div. B for Parts List.					
	REDUCTION GEAR MOUNTING POSITION—"Clock" position shows mounting of reduction unit in relation to Crankshaft.					
100-100		SK560	72"			
100-101	No Variation—	Use Basic Parts List				
100-102	Note 1				21007-E	
100-103		SK560		C6341	21014-A	
100-104	Notes 2 & 6	SK560				10203-B
100-105	Notes 2 & 6	SK560				10203-B
100-106				C6341	21014-A	
100-107	Note 3					
100-108	No Variation—	Use Basic Parts List				
100-109				C6341	21014-A	
100-110				C6341	21014-A	
100-111	Note 4	SK560	72"	C6341	21014-A	
100-112		SK560	72"	C6341	21014-A	
100-121		SK560	72"	C6341	21014-A	
160-100	Notes 1 & 4			21106	C6341	21013-F 3800 3:00
190-100		10062-A		21108		
190-101		10062-A		21109		

NOTE 1—Use 2166 Line, 21380-B Tank Assembly.
 NOTE 2—Use 21051 Tank Assembly, 21048 Bracket and 7949 Strap.
 NOTE 3—Use 10061-B Plate, 7941 Tank and 4536 Line.
 NOTE 4—Use 10061-B Plate Assembly.
 NOTE 5—Use 6819 Shorting Wire Terminal.
 NOTE 6—Use 21351 Horn—Air, 4533 Tube—Breather, 10353 Sleeve, 5052 Elbow.