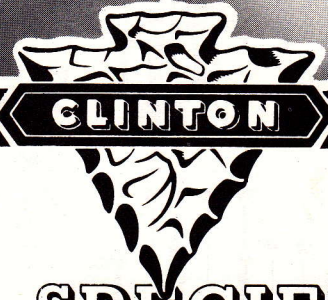


A Wide Range of Models are Made By **CLINTON** For Farm, Home and Industrial Use.



	H.P.	R.P.M.
2100	1.1	2200
	1.5	2800
	1.75	3600

GENERAL SPECIFICATIONS

Model	Type	Description	Starter	Weight
2100	4-Cycle Air Cooled	Horizontal Shaft	Rope or Recoil	19

BORE: 2 3/8"

STROKE: 1 5/8"

TYPE: 4 cycle, single cylinder, L-Head, air-cooled.

AIR-COOLED: Large capacity, curved vane blower cast integral with fly-wheel. Air passes through deep fins to maintain correct operating temperature.

PISTON DISPLACEMENT: 7.2 cubic in.

IGNITION: Very high voltage, built-in fly-wheel magneto for faster starting. Moisture and dust proof with fully enclosed ignition points.

SPARK PLUG: 14 m.m.

LUBRICATION: Splash type. Oil drainage permitted from either side of the base.

CARBURETOR: Full float feed with idle and high speed adjustment.

GOVERNOR: Adjustable, air velocity type, statically balanced.

MAIN BEARINGS: Bronze.

CRANKSHAFT: Arma steel, induction heat-treated. Counterweights and cam gear drive integral with shaft.

CONNECTING ROD: I-Beam, aluminum alloy with extra large bearings.

PISTON: Aluminum alloy.

PISTON RINGS: Two compression and one oil control. Treated surfaces.

VALVES: Forged steel. Exhaust valve provided with heat-resistant alloy head.

VALVE SEATS: Alloy inserts.

VALVE TAPPETS: Hardened and ground.

CYLINDER AND CRANKCASE: Die cast cylinder block and crankcase with large amount of cooling area for cool operation. A close-grained cast iron liner is die cast in block.

CYLINDER HEAD: Aluminum, removable with extra deep cooling fins.

OIL FILLER: Conveniently located on either side for easy check of oil level and for filling.

AIR CLEANER: Visible oil bath type.

FUEL TANK: Two-quart capacity with gasoline strainer and shut-off.

OIL RESERVOIR: One-pint capacity.

DIRECTION OF ROTATION: Counter-clockwise, viewed from power take-off shaft side.

FINISH: Dark green or red heat-resisting enamel. Other colors upon special order.

STANDARD EQUIPMENT

Standard equipment includes: Air cleaner, dust and moisture proof, high voltage, flywheel magneto, float feed carburetor, fuel tank, muffler, blower housing screen, rope starter.

SPECIAL EQUIPMENT

Special equipment includes: Remote governor controls, any length throttle cables and stop, ignition shielding, other crankshaft extensions, fungus proofing, kerosene conversion, recoil starter.

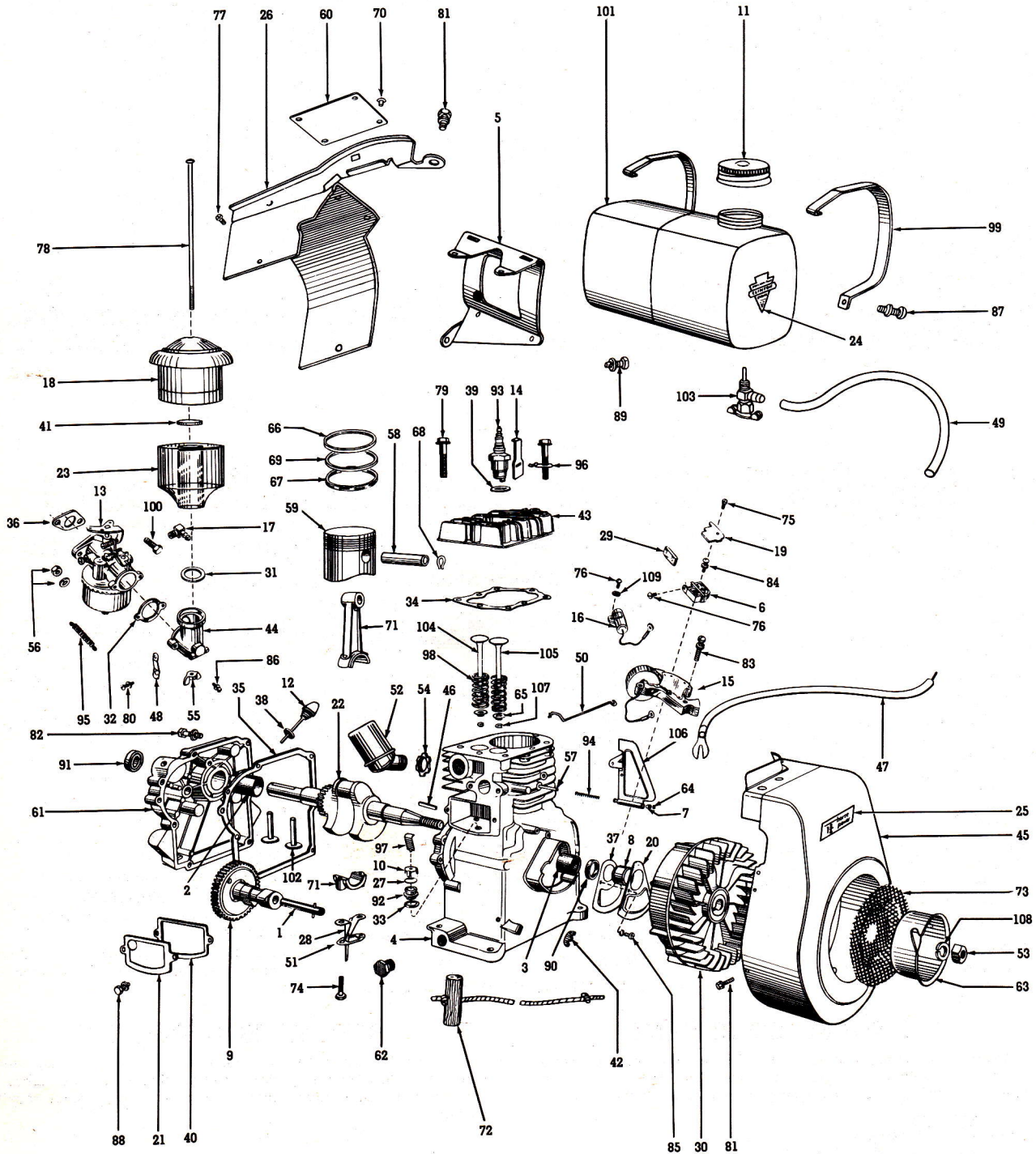


MANUFACTURED IN A WIDE RANGE OF 2-CYCLE AND 4-CYCLE MODELS

CLINTON ENGINES PROVIDE POWER

FOR FARM • HOME • INDUSTRIAL EQUIPMENT

Specifications and Dimensions are subject to change without notice.



CLINTON

S	E	R	I	E	S	
2100						
4	-	C	Y	C	L	E

**BASIC
TYPE**
**SEC. II, DIV. 2100
PARTS CATALOG**
 Revised August, 1955
 Supersedes March, 1955

There is one Basic Type of the 2100 Engine covered by this Basic Parts List.

NOTE: See page No. (α) on "How to Identify Your Clinton Engine."

BASIC PARTS LIST

Ref. No.	PART DESCRIPTION	Part No.	Quantity
1	AXLE — Camshaft	21310-A	1
2	BEARING — Sleeve (Plate Ass'y)	21016	1
3	BEARING — Main (Sleeve) (Cylinder Block)	10380	1
4	BLOCK ASSEMBLY — Cylinder	10201-A	1
5	BRACKET — Fuel Tank Mounting	21352	1
6	BREAKER POINTS ASSEMBLY	P5543	1
	BREATHER ASSEMBLY	6330	1
	NOTE: Breather Assembly includes Ref. Nos. 10, 27, 33, 92, 97		
7	BUSHING — Air Vane	7239	2
8	CAM — Magneto Breaker	10316	1
9	CAMSHAFT	21008	1
10	CAP — Breather	7151	1
11	CAP & GASKET ASSEMBLY — Fuel	4517-A	1
12	CAP & GASKET ASSEMBLY — Oil Filler	21074-A	1
13	CARBURETOR ASSEMBLY — Clinton	14010	1
	CLEANER ASSEMBLY — Air	4512-A	1
	NOTE: Cleaner Assembly includes Ref. Nos. 18, 23, 41, 55		
14	CLIP — Ignition Shorting	10368	1
15	COIL ASSEMBLY — Magneto (w/Laminations)	P5545	1
	COIL — Magneto (w/o Laminations)	P5538	1
16	CONDENSER — Magneto	P7219	1
17	CONNECTOR — 90° Flex. Fuel Line (Carburetor)	5052	1
18	COVER & ELEMENT — Air Cleaner	4512	1
19	COVER — Breaker Points Ass'y	P5544	1
20	COVER — Dust, Magneto Breaker Points	10382	1
21	COVER — Valve Chamber	10324	1
22	CRANKSHAFT	21100	1
23	CUP — Air Cleaner, Lower	4513	1
24	DECAL — Arrowhead	3579	2
25	DECAL — Horsepower	21010	1
26	DEFLECTOR ASSEMBLY — Air, Cylinder	10006	1
27	DISC — Breather	7152	1
28	DISTRIBUTOR — Oil	21073	1
29	FELT — Lubrication, Cam Follower	P5504	1
30	FLYWHEEL ASSEMBLY — With Magnets	400054	1
31	GASKET — Air Horn to Air Cleaner	10259	1
32	GASKET — Air Horn to Carburetor	3990	1
33	GASKET — Breather	7153	1
34	GASKET — Cylinder Head	10253	1
35	GASKET — Engine Base (.015)	10254	1
	GASKET — Engine Base (.010)	10254-1	1
36	GASKET — Asbestos (Carburetor to Block)	6002	1
37	GASKET — Cover, Dust (Breaker Points)	10250	1
38	GASKET — Oil Filler Cap	3297	1
39	GASKET — Spark Plug	3115	1
40	GASKET — Valve Chamber Cover	10251	1
41	GASKET — "O" Ring, Air Cleaner (Element to Cup)	4515	1
	GASKET KIT — Engine Overhaul	6329	1
42	GROMMET — Magneto (Breaker Lead Wire)	10367	1
43	HEAD — Cylinder	10011	1
44	HORN — Air	21350	1
45	HOUSING ASSEMBLY — Blower	21000-A	1
46	KEY — Flywheel	10339	1
47	LEAD — Hi-Tension, Magneto	P2055	1
48	LEVER — Speed Adjusting	4441	1
49	LINE — Fuel, Flex.	6340	1

BASIC PARTS LIST (Continued)

Ref. No.	PART DESCRIPTION	Part No.	Quantity
50	LINK — Carburetor to Air Vane	21020	1
51	LOCK — Double, Connecting Rod Screw	21318	1
52	MUFFLER — (45° Inlet)	4500	1
53	NUT — Hex. 7/16-20 (Starter Pulley)	3250	1
54	NUT — Lock, Muffler	4425	1
55	NUT — Wing (Air Cleaner)	7044	1
56	NUT & LOCKWASHER ASSEMBLY — 1/4-28 Hex.	3255-A	2
57	PIN — Pivot, Air Vane Governor	7238	1
58	PIN — Wrist	6024	1
59	PISTON — Standard	10001	1
	PISTON ASSEMBLY — Standard	10001-A	1
	NOTE: Piston Assemblies are available in the following oversizes: .005, .010, .020, .030, and .040. Order by part Number and Specify Oversize.		
	NOTE: Piston Assembly includes Ref. Nos. 58, 59, 66, 67, 68, 69		
60	PLATE — Name	6530	1
61	PLATE ASSEMBLY — Bearing	C10060-B	1
62	PLUG — 1/4 N.P.T. (Oil Drain)	3289	2
63	PULLEY — Starter	3299	1
64	RETAINER — Air Vane	4430	1
65	RETAINER — Valve Spring	3028	2
66	RING — Compression, Standard	6026	1
67	RING — Oil, Standard	6006	1
68	RING — Retainer, Wrist Pin	6034	2
69	RING — Scraper, Standard	6027	1
	RING SET — Standard	10023	1
	NOTE: Ring Sets are available in the following oversizes: .005, .010, .020, .030, and .040. Order by Part Number and Specify Oversize.		
	NOTE: Ring Set includes Ref. Nos. 66, 67, 69		
70	RIVET — Tubular (Name Plate)	5460	4
71	ROD ASSEMBLY — Connecting	10002-A	1
72	ROPE ASSEMBLY — Starter	4266	1
73	SCREEN — Revolving	7187	1
74	SCREW — H.H.C. 1/4-28 x 1 1/8 (Connecting Rod Cap)	5635	2
75	SCREW — P.H.S.T. #6-32 x 3/8 (Cover, Breaker Points)	5617	1
76	SCREW — R.H.M. #6-32 x 1/4 (Breaker Points Terminal) (Condenser to Block)	5423	2
77	SCREW — S.H.H.S.T. #8-32 x 3/8 (Deflector to Block)	5644	2
78	SCREW — R.H.M. #10-24 x 6 1/4 (Air Cleaner to Air Horn)	5636	1
79	SCREW — H.W.H. 5/16-18 x 1 1/8 (Cylinder Head to Block)	5654	8
80	SCREW & LOCKWASHER ASSEMBLY — 10-32 x 3/8" (Lever, Speed Adjusting)	3222-F	1
81	SCREW & LOCKWASHER ASSEMBLY — H.H.C. 1/4-20 x 3/8 (1—Deflector to Block; 2—Blower Housing to Block)	3632-G	3
82	SCREW & LOCKWASHER ASSEMBLY — H.H.C. 1/4-20 x 1 1/4 (Brng. Plt. to Block)	5613-G	6
83	SCREW & LOCKWASHER ASSEMBLY — P.H.S.T. #10-24 x 1 (Laminations to Block)	5430-A	2
84	SCREW & LOCKWASHER ASSEMBLY — R.H.M. #6-32 x 5/16 (Breaker Points to Block)	5620-A	1
85	SCREW & LOCKWASHER ASSEMBLY — R.H.M. #8-32 x 3/8 (Dust Cover to Block)	5644-A	2
86	SCREW & LOCKWASHER ASSEMBLY — R.H.M. #8-32 x 3/4 (Air Horn to Carburetor)	7113-A	2
87	SCREW & LOCKWASHER ASSEMBLY — R.H.M. #10-23 x 1 (Blower Housing to Tank)	5421-A	2
88	SCREW & LOCKWASHER ASSEMBLY — S.H.H.C. #10-24 x 1/2 (Valve Chamber Cover)	5645-A	2

CLINTON

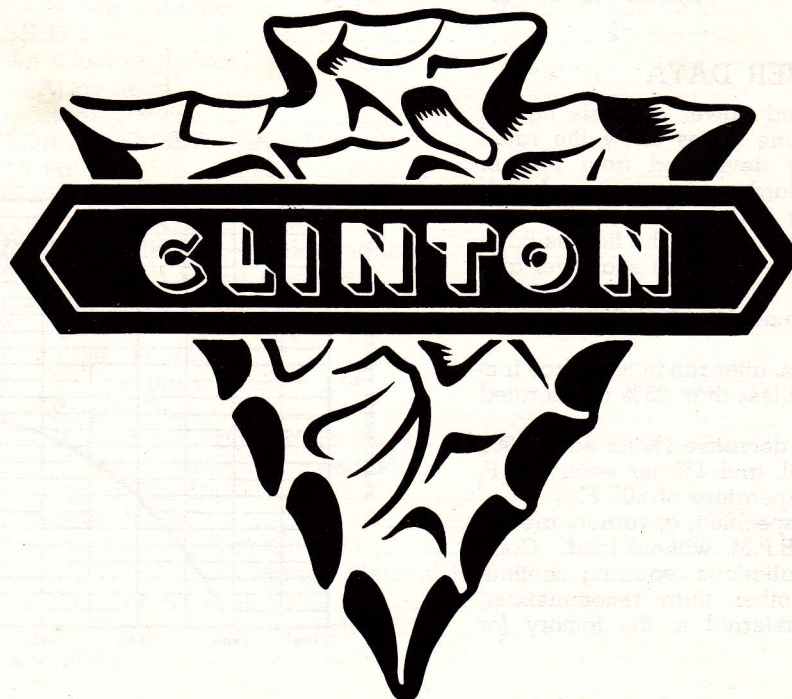
S E R I E S
2100
4 - C Y C L E

BASIC
TYPE

SEC. II, DIV. 2100
PARTS CATALOG
Revised August, 1955
Supersedes March, 1955

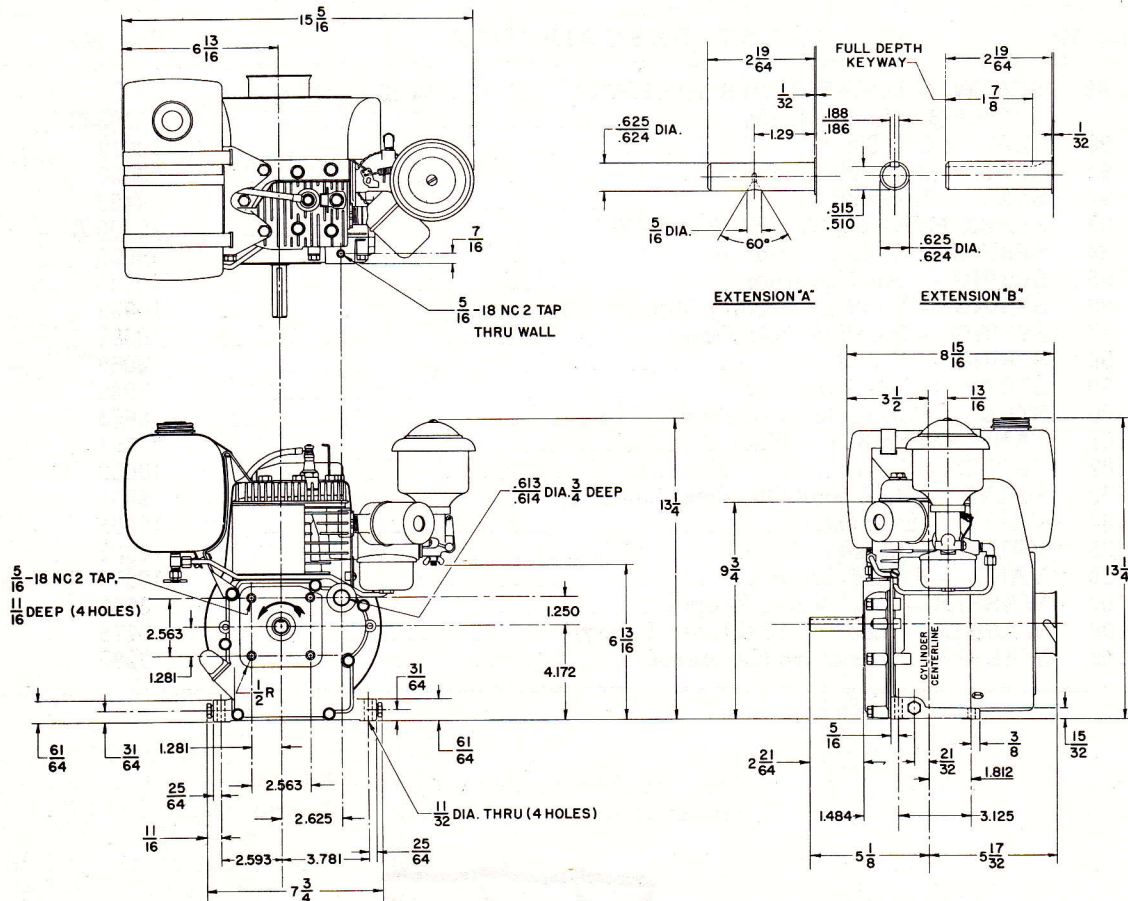
BASIC PARTS LIST (Continued)

Ref. No.	PART DESCRIPTION	Part No.	Quantity
89	SCREW & LOCKWASHER ASSEMBLY — H.H.C. ¼-20 x 1½ (Tank Bracket to Block).....	5663-G	1
90	SEAL — Oil (Block).....	10012	1
91	SEAL — (Brng. Plt. Ass'y).....	3026	1
92	SEAT — Breather.....	4438	1
93	SPARK PLUG & GASKET ASSEMBLY.....	16303-A	1
94	SPRING — Compression (Air Vane).....	10005	1
95	SPRING — Air Governor.....	10336	1
96	SPRING — Ignition Shorting Clip.....	10369	1
97	SPRING — Breather Hold Down.....	10381	1
98	SPRING — Valve.....	3068	2
99	STRAP — Fuel Tank.....	7943	2
100	STUD — Carburetor Mounting.....	5665	2
101	TANK ASSEMBLY — Fuel.....	21051	1
102	TAPPET — Valve.....	10009	2
103	VALVE — Fuel Shut-Off, Flex. Line.....	5051	1
104	VALVE — Exhaust.....	10301	1
105	VALVE — Intake.....	10302	1
106	VANE — Air Governor.....	10393	1
107	WASHER — "C," Valve Keeper.....	3291	2
108	WASHER — Lock, 7/16 (Starter Pulley).....	3275	1
109	WASHER — Lock, #8 (Condenser).....	3280	1



DIMENSIONAL SPECIFICATIONS AND POWER DATA

Detailed prints and engineering counsel are available. Specifications and Dimensions are subject to change without notice.



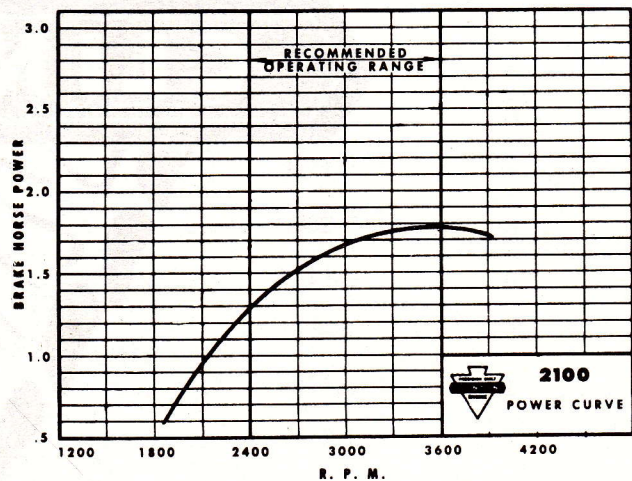
POWER DATA

The performance and power analysis figures for the Clinton Engine series show the rated Brake Horse Power developed from test-run engines. The standard engine equipped with standard air cleaner and muffler was used, in every case, for these tests and the figures have been corrected for barometer at sea level and temperature of 60° F. Production engines when shipped will develop not less than 85% of rated B.H.P.

Production engines, after run-in to reduce friction will develop not less than 95% of the rated B.H.P.

Engine power will decrease 3% for each 1,000 feet above sea level, and 1% for each 10° F. above standard temperature of 60° F.

Unless otherwise specified, governors are set to operate at 3,300 R.P.M. without load. Complete details of installations requiring continuous operation at other than recommended speeds should be referred to the factory for approval.



CABLE ADDRESS: ENGINES U. S. A.
ENGINE DIVISION OF **CLINTON MACHINE CO.**
MAQUOKETA, IOWA

CLINTON

S	E	R	I	E	S
2100					
4	-	C	Y	C	L
E					

MODEL VARIATIONS

SEC. II, DIV. 2100
PARTS CATALOG
Revised August, 1955
Supersedes March, 1955

MODEL VARIATIONS OF 2100 SERIES

The adaptation of Clinton Engines to a wide variety of uses results in what is known as "Model Variations." Following is the complete list of all Models produced up to issue date (shown above). Opposite each Engine Model listed are the Part Numbers and/or Assembly Numbers for the Series used IN ADDITION TO or IN PLACE OF the parts illustrated and shown on the Basic Parts List preceding this Model Variations List. Refer to other sections of this Manual when Assembly Numbers are given to find the Parts List for these assemblies.

See page (a) on "How to Identify Your Clinton Engine." Use the preceding Basic Parts List except as shown below.

ENGINE MODEL—See Page (a), "How to Identify Your Clinton Engine."	FOOTNOTES	CONTROL GROUP—Control Group Illustration Numbers Shown. Refer to Sec. III, Div. D for Parts List.	CONTROL CABLE LENGTH, replacement cable is furnished in 72" length ONLY, cut to length shown.	CRANKSHAFT (Part Numbers Shown). Refer to Sec. IV, Div. B for details and further information.	PLATE ASSEMBLY — BEARING (Part Numbers Shown). Refer to Basic Parts List for corresponding part.	STARTER—RECOIL (Assembly Numbers Shown). Refer to Sec. III, Div. H for Parts Lists.	HOUSING ASSEMBLY — BLOWER (Part Numbers Shown). Refer to Basic Parts List for corresponding part.	REDUCTION GEAR (Assembly Numbers Shown). Refer to Sec. III, Div. C for Parts List.
2100-100								
2100-101								
2100-102								
2100-103	Note 1				10061-B			
2100-104								
2100-105						C-6323	21014-A	
2100-106				21102				
2100-107		SK560				C-6323	21014-A	
2100-108	Note 2	SK560	72"			C-6323	21014-A	
2100-109		SK560	72"					
2100-110	Note 3	SK560	72"					
2100-111				21102				
2100-112		SK560	72"	21101				
2100-113	Note 5							
2100-114				21102		C-6323	21014-A	
2100-115						C-6323	21014-A	
2100-116		SK560	72"	21102				
2100-117		SK560	72"	21102		C-6323	21014-A	
2100-118		SK560	72"					
2100-119		SK560	72"			C-6323	21014-A	
2100-120				21101				
2100-121				21102				
2100-122		SK560				C-6323	21014-A	
2100-123	Note 4	SK560						
2100-124	Note 4	SK560				C-6323	21014-A	
2100-125	Note 6							
2100-126	Notes 1, 2 & 7						21014-A	
2100-127		SK560				C-6341	21014-A	
2100-128	Note 5					C-6323	21014-A	
2140-100		SK560	78"					3554
2140-101	Note 8	SK560						3554
2160-100				21106				3800
2190-100	Note 9			21107	10062-A			

CLINTON

S E R I E S
2100
4 - C Y C L E

MODEL
VARIATIONS

MODEL VARIATIONS OF 2100 SERIES (Cont.)

NOTE 1—Air Cleaner Assembly #6331 and Screw #5634 used in lieu of #4512-A.

NOTE 2—Wire Assembly #5567-A, Grommets #5566 and 10366, and Screw #5644 are used as additional parts.

NOTE 3—Air Horn Assembly #21351 and Elbow #5052 used on this model.

NOTE 4—Tank Assembly #7941-H and Line (Fuel) #6316 are used on this model.

NOTE 5—Block Assembly #10202-B used on this model.

NOTE 6—Block Assembly #10203-B and Deflector #10026 used on this model.

NOTE 7—Muffler #3639 used in lieu of #4500.

NOTE 8—Housing Assembly #21007-D and Tank Assembly #21380-B used on this model.

NOTE 9—Gasket #21327 and Retainer #21329 used on this model.

