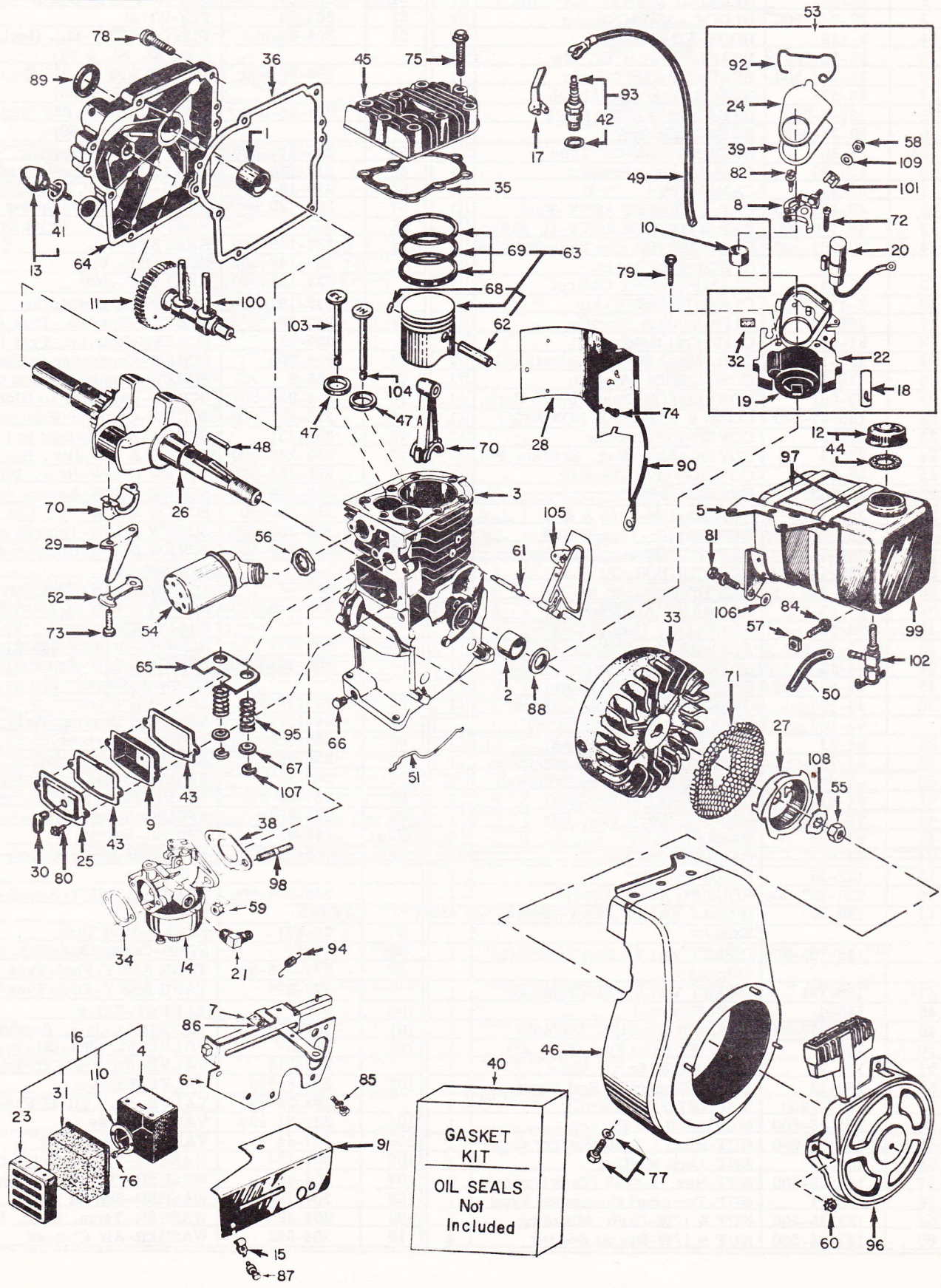




BASIC PARTS LIST

410-0105-000

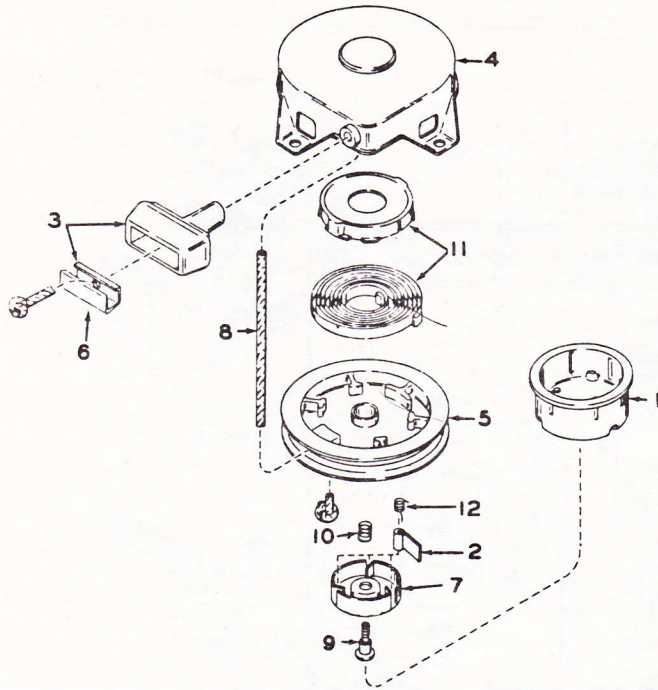
SEC. II DIVISION 1962
Revised June, 1975
Supersedes Dec., 1968



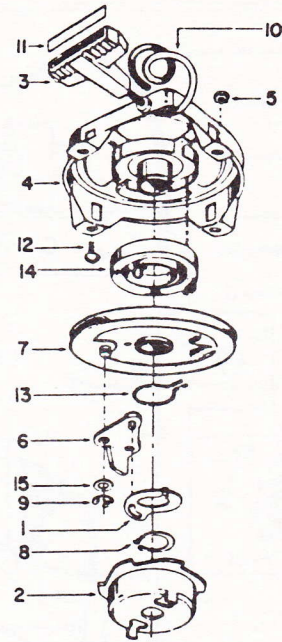
CLINTON ENGINES CORPORATION
MAQUOKETA, IOWA

Ref. No.	Part No.	Description	Qty.	Ref. No.	Part No.	Description	Qty.
1	20-56	BEARING-Sleeve (Plt. Ass'y)	1	61	203-91	PIN-Pivot, Air Vane Governor	1
2	20-54	BEARING-Main Sl. (Cyl. Blk.)	1	61A	203-21	PIN-Roll-Type C & D	1
3	22-849-500	BLOCK ASS'Y-Cylinder	1	62	203-65	PIN-Wrist	1
4	2-139	BODY-Air Cleaner	1	63	204-86-500	PISTON ASS'Y-Std. (Incl. Ref. Nos. 62, 68, & 69)	1
5	26-55-500	BRACKET-Fuel Tk. Mtg.	1		206-86-500	PISTON ASS'Y-.010 (Incl. Ref. Nos. 62, 68, & 69)	
6	26-704-500	BRACKET ASS'Y-Slide	1		207-86-500	PISTON ASS'Y-.020 (Incl. Ref. Nos. 62, 68, & 69)	
7	26-576	BRACKET-Spring Attach	1				
8	135-7-500	BREAKER POINTS ASS'Y	1	64	215-514-500	PLATE ASS'Y-Bearing	1
9	29-32-500	BREATHER ASS'Y	1	65	215-136	PLATE-Valve Spring Retainer	1
9A	28-86	BUSHING-Shut-Off-Type D	1	66	216-19	PLUG-1/4 N.P.Y. (Oil Drain)	2
10	157-29	CAM-Magneto Breaker	1	67	304-135	RETAINER-Valve Spring	2
11	6-432	CAMSHAFT	1	68	232-41	RING-Retainer, Wrist Pin	2
12	45-424-500	CAP & GASKET ASS'Y-Fuel	1	69	233-148-500	RING SET-Std.	1
13	45-110-500	CAP & GASKET ASS'Y-O. Filler	1		235-148-500	RING SET-.010	
14	39-961-500	CARBURETOR-See exploded view on page 3 for parts.	1		237-148-500	RING SET-.020	
15	81-13	CLAMP-Remote Control	1	70	245-102-500	ROD ASS'Y-Connecting	1
16	2-177-500	CLEANER ASS'Y-Air	1	71	257-30	SCREEN-Rotating-Type A & B	1
17	266-28	CLIP-Ignition Shorting	1		257-25	SCREEN-Rotating-Type C & D	1
18	81-20	CLIP-Coil Holding	1	72	258-299	SCREW-Condenser to Plate	1
19	135-13-990	COIL-Mag. (W/O Laminations)	1	73	258-9	SCREW-Connecting Rod Cap	2
20	135-29-990	CONDENSER-Magneto	1	74	258-936-500	SCREW-Deflector to Block	2
21	69-281	CONNECTOR-Fuel Line to Carb.	1	75	258-88	SCREW-Cylinder Head to Block	8
22	135-37-500	CORE & BREAKER BOX ASS'Y	1	76	258-131	SCREW-Air Cleaner to Carb.	2
23	45-337	COVER-Air Cleaner	1	77	258-280-500	SCREW & L'W-Blw. Hsg. to Blk.	2
24	45-15	COVER-Dust, Mag. Breaker Pts.	1	78	258-254-500	SCREW & L'W-Brng. Plt. to Blk.	7
25	45-82	COVER-Valve Chamber	1	79	258-108-500	SCREW & L'W-Lamin. to Block	2
26	46-403	CRANKSHAFT	1	80	258-82-500	SCREW & L'W-Vlv. Cham. Cover	2
27	265-10	CUP-Starter-Type A & B	1	81	258-238-500	SCREW & L'W-Tank Bracket	1
	265-277	CUP-Starter-Type C & D	1	82	258-297-500	SCREW & L'W-Breaker Points to Breaker Box	
28	259-56	DEFLECTOR-Air Cylinder	1	84	258-32	SCREW & L'W-Fuel Tank Straps	2
29	220-147	DISTRIBUTOR-Oil	1	85	258-936-500	SCREW & L'W-Bracket Ass'y Slide to Carb.	2
30	158-415	ELBOW-Breather	1	86	258-374	SCREW-Spring Bracket	1
31	2-175-990	ELEMENT-Air Cleaner	1	87	258-1095-500	SCREW & L'W-Remote Control Clamp & Shroud	2
32	94-189	FELT-Lub. Cam Follower	1	88	94-178-990	SEAL-Oil Block	1
33	83-10-500	FLYWHEEL ASS'Y	1	89	94-162-990	SEAL-Oil Bearing Plate	1
34	94-13	GASKET-Air Cleaner to Carb.	1	90	259-659-500	SHIELD-Flywheel	1
35	94-663-990	GASKET-Cylinder Head	1	91	259-762	SHROUD-Carburetor	1
36	94-107	GASKET-Brng. Plt. (.015 Std.)	1	92	263-10	SPRING-Breaker Box Cover	1
	93-107	GASKET-Brng. Plt. (.010)	1	93	267-28-500	SPARK PLG. & GASK. ASS'Y-H10	1
38	94-31	GASKET-Carb. to Block	1	94	263-383	SPRING-Speed Adj.	1
39	94-241	GASKET-Breaker Compartment	1	95	263-92	SPRING-Valve	2
40	94-669	GASKET KIT-Engine Overhaul	1	96	265-28-500	STARTER ASS'Y-Recoil-Type A & B	1
41	94-81	GASKET-Oil Filler Cap	1		265-280-500	STARTER ASS'Y-Recoil-Type C & D	1
42	94-92-990	GASKET-Spark Plug	1	97	26-671	STRAP-Fuel Tank	2
43	94-103	GASKET-Valve	2	98	24-11	STUD-Carb. Mounting	2
44	94-62	GASKET-Fuel Cap	1	99	277-396-500	TANK ASS'Y-Fuel-Type A, B, C	1
45	122-39	HEAD-Cylinder	1		277-536	TANK ASS'Y-Fuel-Type D	1
46	259-123-500	HOUSING ASS'Y-Blower	1	100	278-5	TAPPET-Valve	2
47	136-22	INSERT VALVE SEAT-.040 O.S. Exhaust	1	101	307-230	TERMINAL-Jam. Breaker Pts.	1
	136-108-990	INSERT VALVE SEAT-Stellite-Exhaust	1	102	293-37	VALVE-Fl. Shut-Off-Type A, B, C	1
47A	136-131	INSERT VALVE SEAT-Intake	1		293-211	VALVE-Fl. Shut-Off-Type D	1
48	148-4	KEY-Flywheel	1	103	291-8-990	VALVE-Exhaust	1
49	307-357-990	LEAD-Hi-Tension, Magneto	1		292-20-990	VALVE-Ex. .010 O/S (Ser. Pt.)	1
50	158-357	LINE-Flexible Fuel (17-1/2")	1	104	291-51-990	VALVE-Intake	1
51	159-21	LINK-Carb. to Air Vane	1	105	107-34	VANE-Air Governor	1
52	148-13	LOCK-Connecting Rod Screw	1	106	304-134	WASHER-Tank Bracket to Block	1
53	268-6-500	MAGNETO ASSEMBLY	1	107	304-90	WASHER-"C" Valve Keeper	2
54	170-18-500	MUFFLER-45 Degree	1	108	304-132	WASHER-Starter Cup	1
55	183-68-990	NUT-Hex. 1/2-20 (Starter Cup)	1	109	304-290	WASHER-Term. Cond. Lead	1
56	183-37	NUT-Lock Muffler	1	110	304-562	WASHER-Air Cleaner	1
57	183-29-500	NUT-Hex. 1/4-28 (Tank Straps)	2				
58	183-21	NUT-Terminal Condenser Lead	1				
59	183-29-500	NUT & L'W-Carb. Mounting	2				
60	183-25-500	NUT & L'W-Recoil Starter	4				

RECOIL STARTER 265-280-500 Type C & D



RECOIL STARTER 265-28-500 Type A & B



Ref. No.	Part No.	Description	Qty.
1	265-277	CUP-Starter	1
2	157-505	DOG-Starter	1
3	121-6-500	HANDLE-Starting	1
4	124-210-500	HOUSING ASS'Y	1
5	219-186-500	PULLEY ASS'Y	1
6	136-141	REINFORCEMENT	1
7	232-213	RETAINER-Dog	1
*8	246-7	ROPE	1
9	258-1103	SCREW	1
10	263-456	SPRING-Brake	1
11	265-278-500	SPRING & CUP ASS'Y	1
12	263-459	SPRING-Dog	1

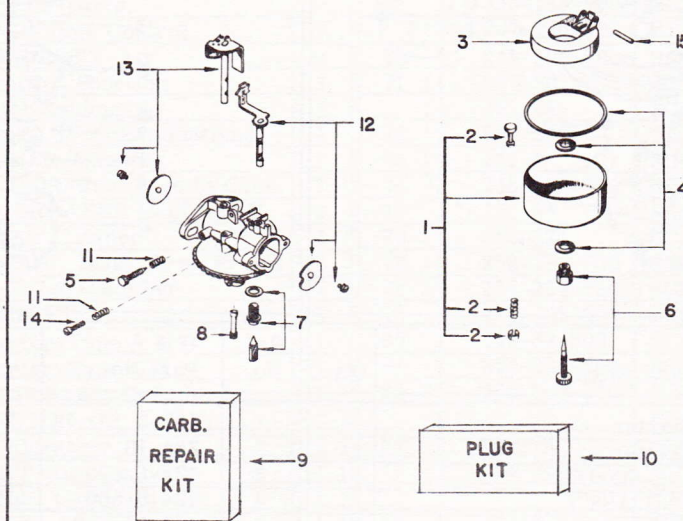
*Required Length Rope Can Be Cut From Bulk 150" Roll
Part No. 246-38

Ref. No.	Part No.	Description	Qty.
1	157-2	ACTUATOR	1
2	265-10	CUP-Starter	1
3	121-6-500	HANDLE	1
4	124-6-500	HOUSING-Incl. Recoil Spring	1
5	183-25-500	NUT & L'W ASS'Y	4
6	157-129-500	PAWL & PIN ASS'Y	1
7	219-28-500	PULLEY ASS'Y	1
8	232-147	RING-Retaining	1
9	232-35	RING-Retaining	1
10	246-7	ROPE	1
11	136-2	INSERT-Handle	1
12	258-191	SCREW-Pan Head	4
13	263-133	SPRING-Actuator	1
14	263-79	SPRING-Recoil	1
15	304-320	WASHER	1

SERVICE INFORMATION 410-0105-000

Type of Carburetion	-----	Float	Oil Capacity	-----	1-1/4 Pint
Bore	-----	2-1/2"	Bearing-Flywheel End	-----	Bronze
Stroke	-----	1-7/8"	Bearing-PTO End	-----	Bronze
Cubic Inch Displacement	-----	9.2	Valve Lash Setting	-----	.009 to .011
Spark Plug Gap	-----	.025 to .028	RPM-Horsepower Rating	-----	4.00 @ 3600
Point Setting	-----	.018 to .021	Block Construction	-----	Die-Cast Aluminum With Cast Iron Sleeve

CARBURETOR 39-961-500 & 39-955-500



Ref. No.	Part Number	Description	Qty.
1	25-16-500	BOWL & DRAIN ASSY.	1
2	39-909	DRAIN ASSY.	1
3	82-2-500	FLOAT & LEVER ASSY.	1
4	*39-928	GASKET KIT	1
5	*181-2	NEEDLE-Idle Adj.	1
6	*181-5-500	NEEDLE-Power Adj.	1
7	*293-30-500	NEEDLE & SEAT INLET	1
8	182-37	NOZZLE	1
9	39-910	REPAIR KIT	1
10	39-938	PLUG KIT	1
11	263-82	SPRING-Idle Needle & Throttle Stop Screw	2
12	6-447	CHOKE SHAFT KIT	1
13	6-488	THROTTLE SHAFT KIT	1
14	258-60	SCREW-Throttle Stop	1
15	*6-195	SHAFT-Float Hinge	1

Ref. #12 not required on carburetor 39-955-500.

* Indicates Parts In Repair Kit.



MODEL VARIATIONS

410-0105-000

SEC. II DIVISION 1962
410-0105-000
MODEL VARIATIONS
REVISED JUNE, 1975
SUPERSEDES SEPT., 1971

The adaptation of Clinton Engines to a wide variety of uses, results in what is known as Model Variations. Following is a list of Models produced to date. Opposite each Engine Model listed are the Part Numbers required in addition to or in place of standard parts. Refer to Basic Parts List for parts not listed in the Model Variations. For replacement engine to fit special applications, external part change may be required.

ENGINES AND SHORT BLOCKS MARKED WITH A () INDICATES CRANKSHAFT CHANGE
See Page C of this Manual on "How to Indentify Your Clinton Engine."

MODELS	CRANKSHAFT	NOTES	REPL. ENGINE #	SHORT BLOCK	MODELS	CRANKSHAFT	NOTES	REPL. ENGINE #	SHORT BLOCK
410-0105-009	46-403	1	21639	149-658	410-7105-034	46-925	2, 9, 10, 14, 17, 19	Note 24	(149-658)
410-0105-010	46-424	1	21639	(149-658)	410-7105-035	46-925	2, 9, 10, 14, 17, 19	Note 24	(149-658)
410-0165-011	46-417	2, 3, 4, 8	21641	(149-658)	410-0105-036	46-925	2, 9, 10, 12, 15	Note 24	(149-658)
410-1105-012	46-403	5	21639	149-658	410-8105-037	46-925	2, 9, 10, 12, 23	Note 24	(149-658)
410-0105-013	46-403	2, 3, 4	21639	149-658	410-0305-038	46-404	6, 7, 9, 10, 11, 12, 13	21644	149-660
410-0305-014	46-404	3, 4, 6, 7	21640	149-660	410-0105-039	46-403		21639	149-658
410-0105-015	46-861	3	(21639)	149-658	410-0105-040	46-861	3	(21644)	149-658
410-1305-016	46-495	5, 6, 7	(21640)	(149-660)	410-1305-041	46-404	1, 5, 6, 25, 26	Note 24	149-660
410-1305-017	46-404	1, 5, 6, 7	21640	149-660	410-0105-042	46-925	10, 17, 19, 27, 29	Note 24	(149-658)
410-9105-018	46-861	Short Block Ass'y		149-658	410-0105-043	46-925	27	Note 24	(149-658)
410-9305-019	46-829	Short Block Ass'y		149-660	410-1105-044	46-403	5, 26	Note 24	149-658
410-0305-020	46-404	6, 7, 9, 10, 11, 12, 13	21644	149-660	410-0105-045	46-403	27, 30	Note 24	149-658
410-7305-021	46-404	3, 6, 7, 14	Note 24	149-660	410-0105-046	46-925		21639	(149-658)
410-0305-022	46-404	6, 7, 9, 10, 13, 15, 16, 17	Note 24	149-660	410-0305-047	46-404	6, 28, 31, 32, 33	Note 24	149-660
410-0305-023	46-404	6, 7, 9, 10, 12, 14	Note 24	149-660	410-0305-048	46-404	6, 25	21640	149-660
410-0105-024	46-860	2, 3, 4	(21639)	(149-658)	410-0105-049	46-925	10, 27, 34	21639	(149-658)
410-0105-025	46-925	2, 9, 10, 12, 18	(21644)	(149-658)	410-0105-050	46-925	28	21639	(149-658)
410-0105-026	46-403	2, 9, 10, 12	21644	149-658	410-0305-051	46-479	6, 25, 26	Note 24	(149-660)
410-0305-027	46-404	6, 7, 9, 10, 17, 19	21644	149-660	410-0105-052	46-925	30	21639	(149-658)
410-0305-028	46-404	6, 7, 10, 20, 21	21644	149-660	410-0105-053	46-403	35	21639	149-658
410-0105-029	46-403	2, 9, 10, 12	21644	149-658	410-0165-054	46-417	8, 36	21641	(149-658)
410-0105-030	46-861	2, 10, 12, 22	(21644)	149-658	410-0105-055	46-403	26	Note 24	149-658
410-0105-031	46-925	2, 9, 10, 12	(21644)	(149-658)	410-0305-056	46-926	6, 7, 10	Note 24	(149-660)
410-8105-032	46-925	2, 9, 10, 12, 14, 23	Note 24	(149-658)	410-0305-057	46-404	6, 25, 26	Note 24	149-660
410-8105-033	46-925	2, 9, 10, 12, 23	Note 24	(149-658)	410-0165-058	46-417	8	21641	(149-658)

410 SERIES NOTES

- Note 1 Use 69-306 Air Horn, 94-11 Gasket, (2) 258-105 Screw, 2-219-500 Air Cleaner Ass'y, 258-72 Screw, and 183-66 Nut.
- Note 2 Use 215-514-500 Bearing Plate Ass'y.
- Note 3 Use 304-732 Adaptor, 69-269 Connector, (2) 258-902 Screw, 158-68 Breather Tube (Cut 5.13" Long), 69-69 Mandrel Tube (Retaining), and 94-485 Gasket.
- Note 4 Use 910-20 Cap Oil Filler and 94-81 Gasket Oil Filler Cap.
- Note 5 Use 259-119-500 Housing Blower, 257-25 Screen, 219-17 Pulley (Starting), 304-132 Washer (Flywheel), and 246-13-500 Rope (Starting), Use 263-343 Spring on Air Vane Governor Models.
- Note 6 Use 20-4 Bearing (Ball), 232-30 Retainer (Crankshaft), 232-29 Retainer (Bearing), 232-36 Spacer, 94-166-990 Seal Oil, and 304-467 Spacer (Cam Gear).
- Note 7 Use 215-489 Bearing Plate.
- Note 8 Use 94-163-990 Seal Oil (Bearing Plate). Refer to Sec. III Div. C, Page 1 for exploded view and parts usage for reduction units.
- Note 9 Use 259-522-500 Housing Ass'y.
- Note 10 Use 26-736-500 Bracket & Slide Group.
- Note 11 Use 277-504-500 Tank Ass'y, 134-16-500 Indicator Ass'y (Fuel), 94-630-990 Gasket, (2) 258-1003 Screw.
- Note 12 Use 45-68-500 Cover Spark Plug.
- Note 13 Use 136-129 Insert Recoil Handle.

(OVER)

410-0105-000 MODEL VARIATIONS CONTINUED

- Note 14 Use 83-121-500 Flywheel, 307-298 Sleeve Insulating, 268-13-500 Magneto, Refer to Sec. III Div. N for magneto parts, however, use 135-265-500 Condenser.
- Note 15 Use 45-477-500 Cover Ass'y (Air Cleaner).
- Note 16 Use 307-124-500 Wire Ass'y and 266-53-990 Switch.
- Note 17 Use 45-66 Cover Spark Plug.
- Note 18 Use 277-508-500 Tank Ass'y.
- Note 19 Use 307-120-500 Wire Ass'y, 183-26 Nut Hex., 70-7 Grommet, and 258-936-500 Screw, 307-375 Tag Shorting.
- Note 20 Use 277-449-500 Tank Ass'y, (2) 26-159 Strap (Fuel Tank), (2) 258-254-500 Screw & L/W Ass'y, and (2) 183-1 Nut.
- Note 21 Use 307-31-500 Cable & Handle Ass'y.
- Note 22 Use 259-523-500 Housing & Tank Ass'y, 69-5 Connector (Carb.), and 69-6 Connector (Fuel Tank).
- Note 23 Use 265-272-500 Kick Starter and 265-273 Cup (Kick Starter).
- Note 24 Special Engine Order By Complete Model Number.
- Note 25 Use 215-54 Plate Bearing.
- Note 26 Use 277-64-500 Tank Ass'y, (2) 293-37 Shut-Off Valve, and 69-346 Tee Fuel Connector.
- Note 27 Use 215-488-500 Plate Ass'y Bearing.
- Note 28 Use 69-16 Elbow, 69-63 Nipple, and 170-37-500 Muffler.
- Note 29 Use 277-33-500 Tank Ass'y Fuel.
- Note 30 Use 277-51-500 Tank Ass'y Fuel.
- Note 31 Use 215-55 Plate Bearing.
- Note 32 Use 39-1012 Carburetor Ass'y and 69-86 Connector.
- Note 33 Use 277-527-500 Tank Ass'y Fuel and 293-36 Shut-Off Valve.
- Note 34 Use 45-402-500 Cover Spark Plug.
- Note 35 Use 215-53-500 Plate Bearing.
- Note 36 Use 26-693-500 Slide Speed Control, 183-259-990 Nut Insulating, 266-26 Clip Shorting, 70-10 Grommet, 307-120-500 Wire Shorting, and 183-26 Nut.