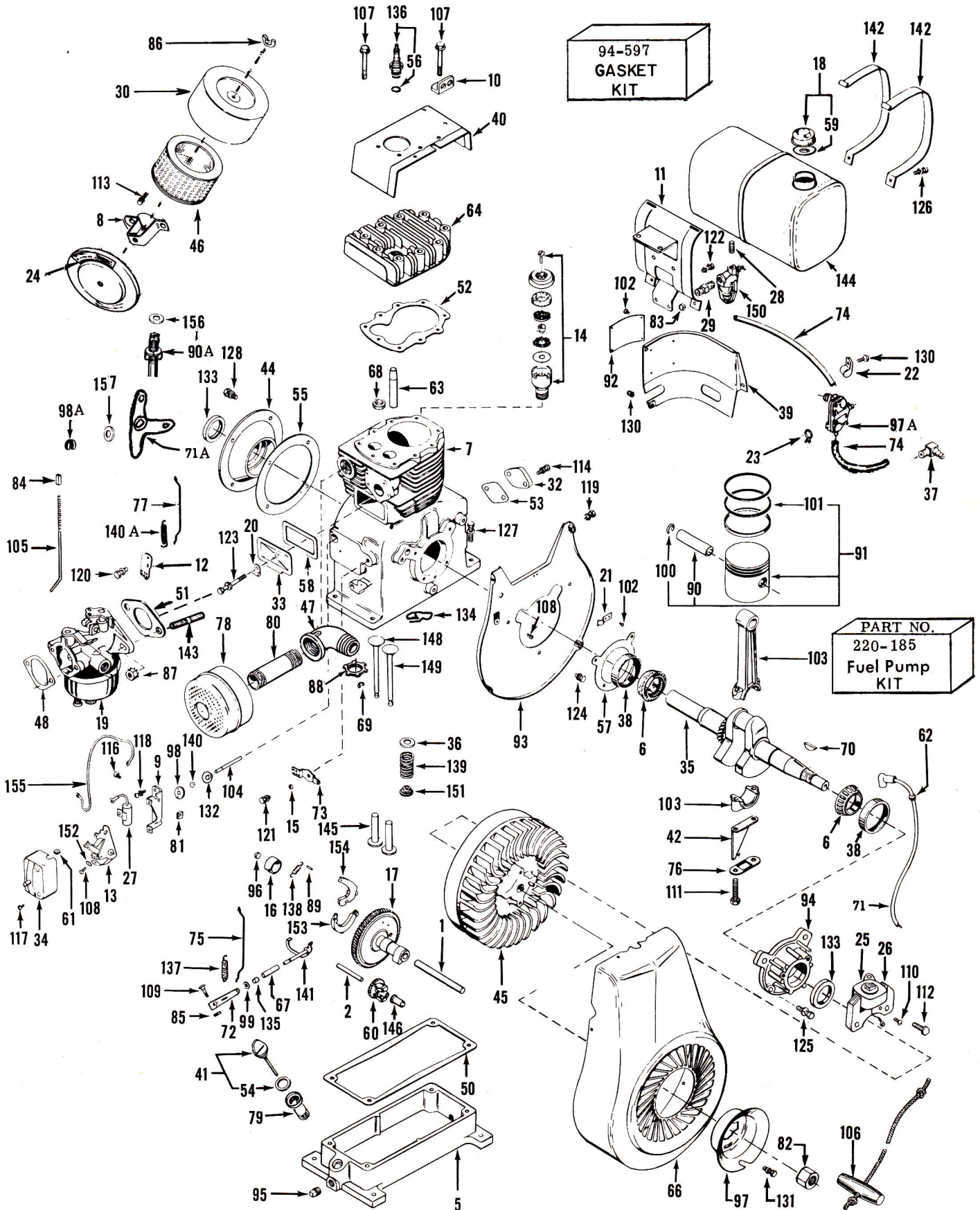


# Clinton BASIC PARTS LIST

## 418-1302-105

File-SEC. II DIV. 1962  
 BASIC PARTS LIST  
 REVISED JUNE 1973



**CLINTON ENGINES CORPORATION**

MAQUOKETA, IOWA

## 418-1302-105 BASIC PARTS LIST

Ref. No.	Part No.	Description	Qty.	Ref. No.	Part No.	Description	Qty.
1	6-4	AXLE-Camshaft	1	66	259-117	HOUSING-Blower	1
2	6-10	AXLE-Gov. Gear & Weight Ass'y	1	67	124-2-500	HOUSING & BRNG. ASS'Y	1
5	18-34	BASE-Engine	1	68	136-24	INSERT-Valve Seat Exhaust	1
6	20-67	BEARING-Roller	2	69	232-3	KEEPER-Valve Spring	4
7	22-867-500	BLOCK ASS'Y-Cylinder	1	70	148-6	KEY-Woodruff, Flywheel	1
8	26-784-500	BRACKET-Air Cleaner	1	71	307-297-500	LEAD-Hi Tension	1
9	26-13	BRACKET-Breaker Ass'y	1	71A	157-123-500	LEVER ASS'Y	1
10	26-27	BRACKET-Engine Hoisting	1	72	157-73	LEVER-Gov.	1
11	26-209	BRACKET-Fuel Tank Mtg.	1	73	157-86-500	LEVER-Speed Control	1
12	26-783	BRACKET-Speed Adj.	1	74	158-357	LINE-Fuel 17 1/2" Pulse Line	1
13	135-5-500	BREAKER POINTS ASS'Y	1			3 3/4 " Long	
14	29-23-500	BREATHER ASS'Y	1	75	159-199	LINK-Gov. Throttle	1
15	28-8	BUSHING-Gov., Control Lever	1	76	148-11	LOCK-Double Conn. Rod Screw	1
16	157-23	CAM-Breaker (Camshaft Axle)	1	77	159-37	LINK-Throttle Lever to Carb.	1
17	6-395-500	CAMSHAFT & PIN ASS'Y (Inc. Ref. Nos. 89, 138, 153 & 154)		78	170-23	MUFFLER-Exhaust	1
18	45-95-500	CAP & GASKET ASS'Y-Fuel	1	79	277-8-500	NECK ASS'Y-Oil Filler	1
19	39-1006-500	CARBURETOR ASS'Y	1	80	69-264	NIPPLE-Muffler	1
20	81-3	CLAMP-Cable Ass'y	1	81	183-54	NUT-Breaker Pts. & Cond., Brkt.	1
21	81-11	CLAMP-Hi Tension Lead	1	82	183-59	NUT-Starter Pulley (7/8-14 SAE)	1
22	81-217	CLAMP-Fuel Line	1	83	183-1	NUT-Hex. 1/4-28 (Tank Strap)	2
23	81-7	CLAMP-Fuel Line	4	84	183-63	NUT-Speed Control Adj. Rod	1
24	2-228	CLEANER-Body	1	85	183-53	NUT-Square #10-24(Gov. Lever)	1
25	135-15-500	COIL-Magneto (W/O Laminations)	1	86	183-65	NUT-Air Cleaner	1
26	135-16-500	COIL-Magneto (With Laminations)	1	87	183-29-500	NUT & L'Washer-Carb.	2
27	135-33-500	CONDENSER-Magneto	1	88	183-265	NUT-Muffler Lock	1
28	69-59	CONNECTOR-1/8	1	89	203-202	PIN-Camshaft Weight	2
29	69-5	CONNECTOR-(1-Fuel Shut Off)	1	90	203-66	PIN-Wrist	1
30	45-498	COVER-Air Cleaner	1	90A	203-208	PIN-Pivot-Gov. Lever	1
32	45-39	COVER-Fuel Pump Mtg. Hole	1	91	204-15-500	PISTON ASS'Y-Std.	1
33	45-83	COVER-Valve Chamber	1		206-15-500	PISTON ASS'Y-O.S. .010	
34	45-13-500	COVER ASS'Y-Breaker	1		207-15-500	PISTON ASS'Y-O.S. .020	
35	46-326	CRANKSHAFT	1			ASS'Y-Inc. Ref. Nos. 90, 100 & 101	
36	232-1	CUP-Valve Spring	2	92	58-471	PLATE-Name (Air Deflector)	1
37	69-29	CONNECTOR-Elbow Pulse Line	1	93	215-95-500	PLATE ASS'Y-Back Blw. Hsg.	1
38	20-64	CUP-Bearing	2	94	215-129	PLATE ASS'Y-Magneto Stator	1
39	259-678	DEFLECTOR ASS'Y-Air Block	1	95	216-22	PLUG-3/8-18, Oil Drain	2
40	259-41-500	DEFLECTOR-Air Cyl. Head	1	96	216-5	PLUG-Expansion Camshaft	1
41	45-109-500	DIPSTICK ASS'Y-Oil Filler	1	97	219-18	PULLEY-Starter	1
42	220-141	DISTRIBUTOR-Oil	1	97A	220-183-500	PUMP-Fuel	1
44	1-18	FLANGE ASS'Y-P. T. O.	1	98	218-38	RETAINER-Breaker Seal	1
45	83-30-500	FLYWHEEL ASS'Y	1	98A	232-24	RETAINER-Lever to Pivot Pin	1
46	2-229	ELEMENT-Air Cleaner	1	99	232-37	RING-Retaing (Gov. Control Lever)	1
47	69-299	ELBOW 45° Street Muffler	1	100	232-42	RING-Retainer, Wrist Pin	2
48	94-458	GASKET-Air Cleaner to Carb.	1	101	233-121-500	RING SET-Std.	1
50	94-52	GASKET-Base to Block	1		235-129-500	RING SET-O.S. .010	
51	94-539	GASKET-Carb. to Block	1		237-129-500	RING SET-O.S. .020	
52	94-50-990	GASKET-Cyl. Head	1	102	244-21	RIVET-Tubular-4 Name Plate 3-Clamp, Back Plate	7
53	94-6	GASKET-Fuel Pump Cover Hole	1	103	245-105-500	ROD ASS'Y- Inc. Ref. No. 111	1
54	94-81	GASKET-Oil Filler Cap (Dipstick)	1	104	245-16	ROD-Breaker Push	1
55	94-108	GASKET-P. T. O. Flange-Std.	1	105	245-11	ROD-Speed Control Adj.	1
	93-108	GASKET-O.S. .010	1	106	246-13-500	ROPE ASS'Y-Starter	1
	95-108	GASKET-O.S. .020	1	107	258-115	SCREW-Head to Block	8
56	94-92-990	GASKET-Spark Plug	1	108	258-83	SCREW-	2
57	94-96	GASKET-Stator Plate	1	109	258-65	SCREW-Gov. Lever	1
58	94-104	GASKET-Valve Chamber Cover	1	110	258-77	SCREW-Coil Ground Lamination	1
59	94-59	GASKET-Fuel Cap	1	111	258-88	SCREW-Conn. Rod Cap	2
	94-596	GASKET KIT-Engine Overhaul	1	112	258-75	SCREW	2
60	106-43-500	GEAR & WEIGHT ASS'Y-Gov.	1	113	258-161-500	SCREW-Air Cleaner to Carb.	2
61	70-8	GROMMET-Breaker Ass'y	1	114	258-241-500	SCREW & L'WASHER	2
62	70-6	GROMMET-High Tension Lead	1	116	258-273-500	SCREW & L'WASHER ASS'Y	1
63	291-21	GUIDE-Valve, Cyl. Block	2	117	258-41-500	SCREW & L'WASHER ASS'Y	2
64	122-11	HEAD-Cylinder	1	118	258-132-500	SCREW & L'WASHER ASS'Y	2

## 418-1302-105 BASIC PARTS LIST

Ref. No.	Part No.	Description	Qty.	Ref. No.	Part No.	Description	Qty.
119	258-280-500	SCREW & L'WASHER ASS'Y	5	139	263-88	SPRING-Valve	2
120	258-936-500	SCREW & L'WASHER ASS'Y	2	140	263-163	SPRING-Comp., Breaker Rod	1
121	258-287-500	SCREW & L'WASHER ASS'Y	1	140A	263-45	SPRING-Back Lash Gov.	1
122	258-232-500	SCREW & L'WASHER ASS'Y	3	141	109-10-500	STOP & SHAFT ASS'Y-Gov.	1
123	258-62-500	SCREW & L'WASHER ASS'Y	1	142	26-210	STRAP-Fuel Tank	2
124	258-67-500	SCREW & L'WASHER ASS'Y	3	143	24-18	STUD-Carb. to Block	2
125	258-282-500	SCREW & L'WASHER ASS'Y	4	144	277-67-500	TANK ASS'Y-Fuel	1
126	258-254-500	SCREW & L'WASHER ASS'Y	2	145	278-7	TAPPET-Valve	2
127	258-258-500	SCREW & L'WASHER ASS'Y	4	146	109-9	THIMBLE-Gov.	1
128	258-227-500	SCREW & L'WASHER ASS'Y	4	148	291-10-990	VALVE-Exhaust	1
130	258-198-500	SCREW & L'WASHER ASS'Y	3	149	291-12-990	VALVE-Intake	1
131	258-220-500	SCREW & L'WASHER ASS'Y	2	150	293-32-500	VALVE & FILTER ASS'Y	1
132	94-155	SEAL-Breaker Actuating Arm	1	151	304-168	WASHER-Valve Spring Retaining	2
133	94-182-990	SEAL-Oil	2	152	304-121	WASHER-Cond. to Bracket	1
134	259-726	SHIELD-Cam Breaker	1	153	305-20-500	WEIGHT-Ignition Shift	1
135	304-72	SPACER-Gov. Control Lever	1	154	305-21-500	WEIGHT-Ignition Shift	1
136	267-28-500	SPARK PLUG & GASKET ASS'Y	1	155	307-126-500	WIRE ASS'Y	1
137	263-40	SPRING-Gov.	1	156	304-28	WASHER-Pivot Pin	1
138	263-77	SPRING-Ignition Shift Weight	2	157	304-88	WASHER-Pivot Pin	1

### GENERAL SPECIFICATIONS

BORE ----- 2-13/16"  
 STROKE ----- 2-5/8"  
 CU. IN. DISP. ----- 18.6  
 SPARK PLUG GAP -- .025

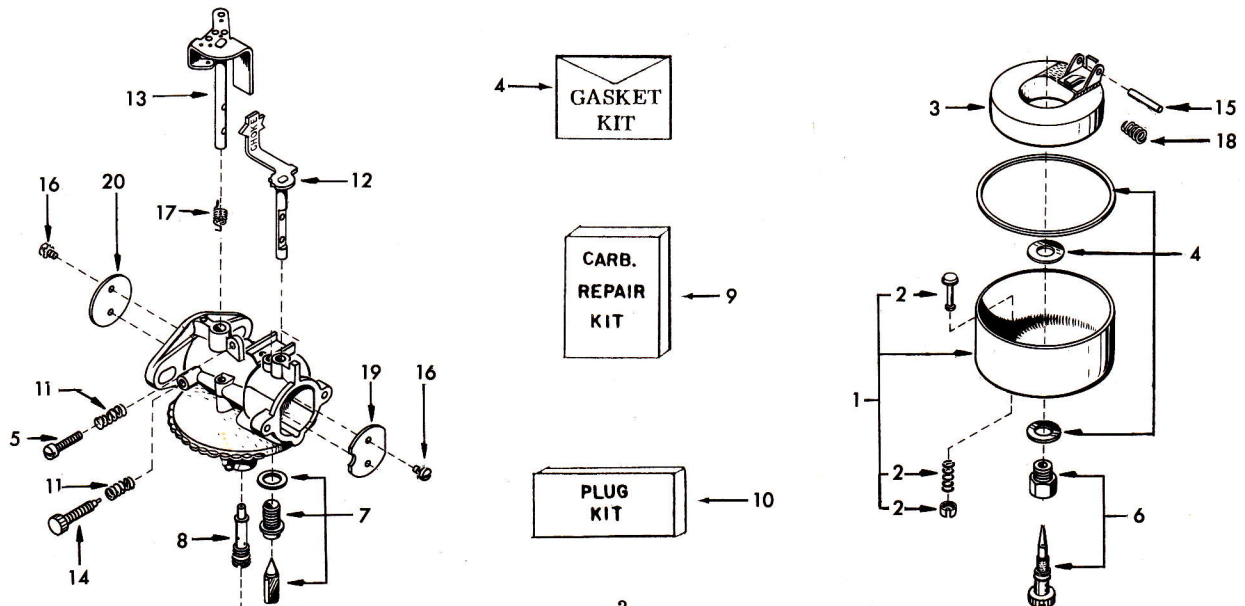
CARBURETION ----- Float  
 FLOAT SETTING ----- 3/32"  
 POINT SETTING ----- .021

OIL CAPACITY ---- 3 Pt.  
 HORSEPOWER ---- 8  
 BLOCK ----- Cast Iron  
 BEARINGS ----- Roller

## CARBURETOR

39-1006-500 LME 64

Ref. No.	Part No.	Description	Qty.	Ref. No.	Part No.	Description	Qty.
1	25-16-500	BOWL & DRAIN ASS'Y	1	11	263-82	SPRING-Compression	2
2	39-909	DRAIN ASS'Y	1	12	6-560-500	SHAFT-Choke	1
3	82-2-500	FLOAT & LEVER ASS'Y	1	13	6-561-500	SHAFT-Throttle	1
4	39-928	GASKET KIT	1	14	258-60	SCREW-Throttle Stop	1
5	181-2	NEEDLE-Idle Adj.	1	15	6-195	SHAFT-Float Hinge	1
6	181-5-500	NEEDLE-Power Adj.	1	16	258-1097	SCREW-Valve Attach	4
7	293-209-500	NEEDLE & SEAT ASS'Y	1	17	263-445	SPRING-Throttle Return	1
8	182-58	NOZZLE-Service	1	18	263-444	SPRING-Float Hinge	1
9	39-1007	REPAIR KIT	1	19	293-206	VALVE-Choke	1
10	39-938	PLUG KIT	1	20	293-173	VALVE-Throttle	1





# MODEL VARIATIONS

## 418-1302-105

SEC. II DIVISION 1962  
ISSUED MAY 1974

The adaptation of Clinton Engines to a wide variety of uses, results in what is known as Model Variations. Following is a list of Models produced to date. Opposite each Engine Model listed are the Part Numbers required in addition to or in place of standard parts. Refer to Basic Parts List for parts not listed in the Model Variations. For replacement engine to fit special applications, external part change may be required.

ENGINES AND SHORT BLOCKS MARKED WITH A ( ) INDICATES CRANKSHAFT CHANGE  
See Page C of this Manual on "How to Indetify Your Clinton Engine."

MODELS	CRANKSHAFT	NOTES	REPL. ENGINE #	SHORT BLOCK	MODELS	CRANKSHAFT	NOTES	REPL. ENGINE #	SHORT BLOCK
418-1362-104	46-792	1	21536		418-1362-110	46-792	1	21536	
418-1302-105	46-326	Std. Eng.	21537		418-1302-118	46-323		21615	
418-1302-108	46-323		21615		418-1302-119	46-326	2	21537	
418-1302-109	46-326		21537		418-5302-125	46-326	3	21539	
					418-1302-133	46-326		21537	

### 418-1302-105 SERIES NOTES

- Note 1 Use 200-815 6:1 Speed Reducer, Refer to Sec. III Div. C For Exploded View.
- Note 2 Use 122-13 Head (2) 183-55 Nut Tank Bracket, 69-25 90° Elbow, 277-66-500 Tank Ass'y, 69-59 Connector, 293-10 Valve, 69-24 Elbow 90°, 158-30 Line Fuel, 158-23 Line Fuel.
- Note 3 Refer to Sec. III Div. N Page 9 For Starter Generator Parts List & Exploded View.