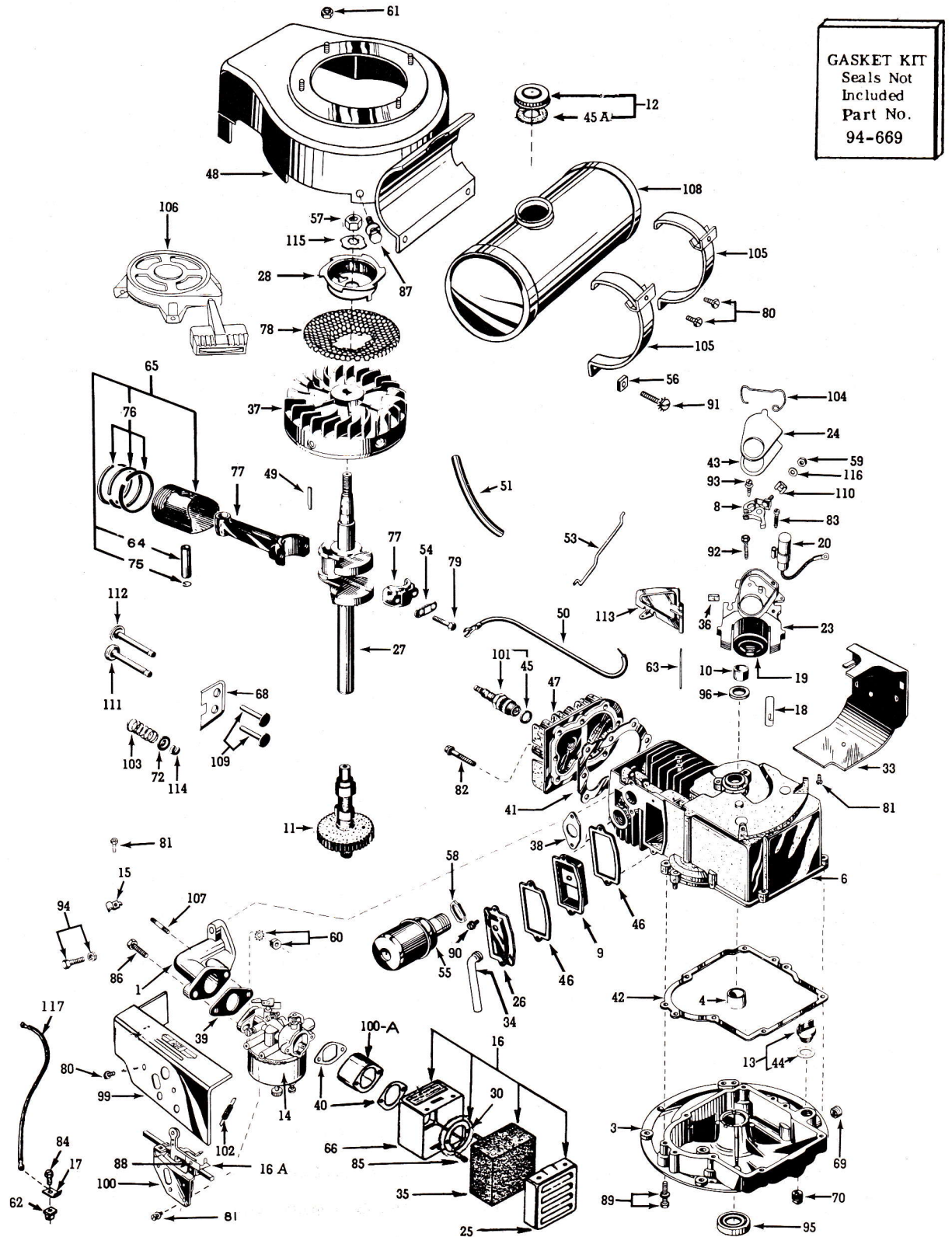




BASIC PARTS LIST

419-0004-000

SEC. II DIVISION 1962
ISSUED MARCH, 1975



CLINTON ENGINES CORPORATION

MAQUOKETA, IOWA

Printed in U.S.A.

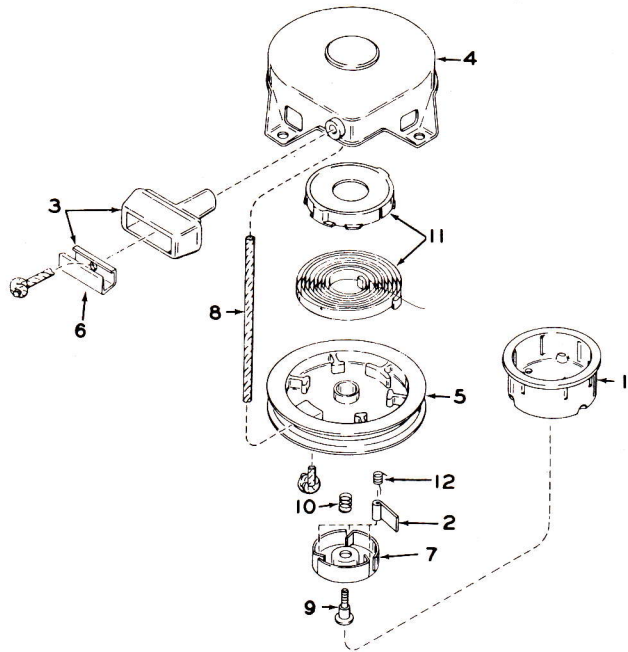
BASIC PARTS LIST

Ref. No.	Part No.	Description	Qty.	Ref. No.	Part No.	Description	Qty.
1	1-53	ADAPTOR-Carburetor	1	63	203-91	PIN-Pivot (Air Vane Gov.)	1
3	18-45-500	BASE ASS'Y-Engine	1	64	203-65	PIN-Wrist	1
4	20-58	BEARING-Block	1	65	204-86-500	PISTON ASS'Y-Std.	1
5	20-50	BEARING-Base (Not Illustrated)	1		206-86-500	PISTON ASS'Y-.010	
6	22-848-500	BLOCK ASS'Y-Cylinder	1		207-86-500	PISTON ASS'Y-.020	
8	135-7-500	BREAKER POINTS ASS'Y	1	66	2-144	PLATE-Air Cleaner	1
9	29-32-500	BREATHER ASS'Y	1	68	215-136	PLATE-Valve Spring	1
10	157-29	CAM-Magneto Breaker	1	69	216-24	PLUG-Oil Drain (Side)	1
11	6-423-500	CAMSHAFT ASS'Y	1	70	216-22	PLUG-Oil Drain (Bottom)	1
12	45-504-500	CAP-Fuel Tank	1	72	304-135	RETAINER-Valve Spring	2
13	45-179	CAP & GASKET ASS'Y-Oil Filler	1	75	232-41	RING-Retainer (Wrist Pin)	2
14	39-874-500	CARBURETOR ASS'Y	1	76	233-148-500	RING SET-Std.	1
15	81-13	CLAMP-Remote Control	1		235-148-500	RING SET-.010	
16	2-177-500	CLEANER ASS'Y-Air	1		237-148-500	RING SET-.020	
16A	81-71	CLIP-Spring Adjust	1		233-149-500	RING-Chrome Set Std.	
17	266-26	CLIP-Shorting	1		237-149-500	RING-Chrome Set-.020	
18	81-20	CLIP-Coil Holding	1	77	245-102-500	ROD ASS'Y-Connecting	1
19	135-13-990	COIL-Magneto (W/O Lamination)	1	78	257-30	SCREEN-Rotating Type A	1
20	135-29-990	CONDENSER-Magneto	1		257-25	SCREEN-Rotating Type B	1
23	135-37-500	CORE & BREAKER BOX ASS'Y	1	79	258-9	SCREW-Connecting Rod Cap	2
		Incl. Ref. No. 18		80	258-159	SCREW-Shroud to Bracket	2
24	45-15	COVER-Dust (Mag. Breaker Pts.)	1	81	258-936-500	SCREW-Shroud & Bracket to Carb.	5
25	45-337	COVER-Air Cleaner	1	82	258-88	SCREW-Cylinder Head	8
26	45-304	COVER-Valve Chamber	1	83	258-299	SCREW-Condenser to Plate	1
27	46-788	CRANKSHAFT	1	84	258-83	SCREW-Insulation Grommet	1
28	265-10	CUP-Starter Type A	1	85	258-902	SCREW-Air Cleaner to Carb.	2
	265-277	CUP-Starter Type B	1	86	258-85	SCREW-Carb. to Adaptor	1
30	2-223	CUP-Air Cleaner	1	87	258-280-500	SCREW & L'WASHER-Hsg. to Blk.	2
33	259-358	DEFLECTOR-Air	1	88	258-374	SCREW-Spring Adj.	1
34	158-415	ELBOW-Breather Tube	1	89	258-254-500	SCREW & L'WASHER-Base to Blk.	7
35	2-225	ELEMENT-Air Cleaner	1	90	258-82-500	SCREW & L'WASHER-Vlv. Chamber	2
36	94-189	FELT-Lubrication (Cam Follower)	1	91	258-185-500	SCREW & L'WASHER-Tank Strap	2
37	83-12-500	FLYWHEEL ASS'Y	1	92	258-108-500	SCREW & L'WASHER-Lam. to Blk.	2
38	94-31	GASKET-Adaptor to Block	1	93	258-297-500	SCREW & L'WASHER-Breaker Pts.	1
39	94-69	GASKET-Carb. to Adaptor	1	94	258-284-500	SCREW & L'WASHER-Adpt. to Blk.	2
40	94-13	GASKET-Air Cleaner to Carb.	3	95	94-176-990	SEAL-Oil (Engine Base)	1
41	94-663-990	GASKET-Cylinder Head	1	96	94-178-990	SEAL-Oil (Block)	1
42	94-107	GASKET-Base (.015 Thick)	1	99	259-765	SHROUD ASS'Y-Carburetor	1
	93-107	GASKET-Base (.010 Thick)	1	100	26-657-500	SLIDE ASS'Y	1
43	94-241	GASKET-Breaker Points	1	100A	900-340	SPACER-Air Cleaner	1
44	94-82	GASKET-Filler Cap	1	101	267-28-500	SPARK PLUG & GASKET ASS'Y	1
45	94-92-990	GASKET-Spark Plug	1	102	263-69	SPRING-Extension (Speed Reg.)	1
45A	94-275	GASKET-Fuel Cap	1	103	263-92	SPRING-Valve	2
46	94-103	GASKET-Valve Chamber	1	104	263-10	SPRING-Breaker Box Cover	1
	94-699	GASKET KIT	1	105	26-351	STRAP ASS'Y-Fuel Tank	2
47	122-39	HEAD-Cylinder	1	106	265-28-500	STARTER ASS'Y-Recoil Type A	1
48	259-379-500	HOUSING & BRACKET ASS'Y-Blw.	1		265-280-500	STARTER ASS'Y-Recoil Type B	1
49	148-4	KEY-Flywheel	1	107	24-18	STUD-1/4-28x1 (Carb. Adaptor)	1
50	307-357-990	LEAD-Hi Tension-Magneto	1	108	277-525-500	TANK ASS'Y-Fuel	1
51	158-25	LINE-Flexible (Fuel)	1	109	278-5	TAPPET-Valve	2
53	159-73	LINK-Air Vane	1	110	307-230	TERMINAL-Jamtitte Breaker Pts.	1
54	148-13	LOCK-Connecting Rod Screws	1	111	291-8-990	VALVE-Exhaust	1
	268-6-500	MAGNETO ASS'Y	1		292-20-990	VALVE-Exhaust .010 Oversize	1
55	170-159-500	MUFFLER	1	112	291-51-990	VALVE-Intake	1
56	183-53	NUT-Fuel Tank Straps	2				
57	183-68-990	NUT-Hex 1/2-20 (Starter Cup)	1	113	107-34	VANE-Air Governor	1
58	183-37	NUT-Lock Muffler	1	114	304-90	WASHER-"C" (Valve Keeper)	2
59	183-21	NUT-Terminal Condenser Lead	1	115	304-5	WASHER-Starter Cup Type A	1
60	183-29-500	NUT & L'WASHER-Carb. to Adpt.	2		304-132	WASHER-Flat Type B	1
61	183-25-500	NUT & L'WASHER	4	116	304-290	WASHER-Terminal Condenser Lead	1
62	183-259-990	NUT-Insulation	1	117	307-120-500	WIRE ASS'Y-Shorting	1

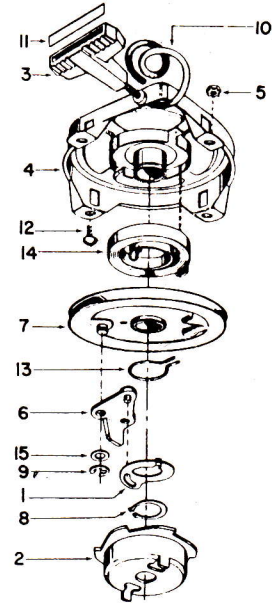
SERVICE INFORMATION 419-0004-000

Type of Carburetion-----	Float	Oil Capacity -----	1 Pint
Bore -----	2-1/2	Bearing Flywheel End -----	Bronze
Stroke -----	1-7/8"	Bearing PTO End -----	Aluminum
Cubic Inch Displacement -----	9.2	Valve Lash Setting -----	.009 to .011
Spark Plug Gap -----	.025 to .028	RPM-Horsepower Rating -----	4 @ 3600
Point Setting -----	.018 to .021	Block Construction -----	Die Cast Aluminum With Cast Iron Sleeve

RECOIL STARTER 265-280-500



RECOIL STARTER 265-28-500

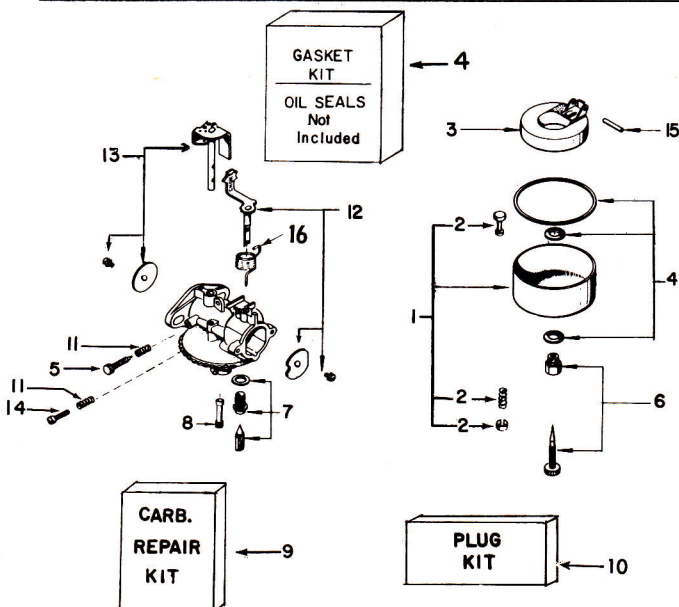


Ref. No.	Part Number	Description	Qty.
1	265-277	CUP-Starters	1
2	157-505	DOG-Starters	1
3	121-6-500	HANDLE-Starting	1
4	124-210-500	HOUSING ASS'Y	1
5	219-186-500	PULLEY ASS'Y	1
6	136-141	REINFORCEMENT	1
7	232-213	RETAINER-Dog	1
* 8	246-7	ROPE	1
9	258-1103	SCREW	1
10	263-456	SPRING-Brake	1
11	265-278-500	SPRING & CUP ASS'Y	1
12	263-459	SPRING-Dog	3

* Required Length Rope Can Be Cut From Bulk 150' Roll
Part No. 246-38

Ref. No.	Part Number	Description	Qty.
1	157-2	ACTUATOR	1
2	265-10	CUP-Starters	1
3	121-6	HANDLE	1
4	124-6-500	HOUSING-Incl. Recoil Spring	1
5	183-25-500	NUT & L'W ASS'Y	4
6	157-129-500	PAWL & PIN ASS'Y	1
7	219-28-500	PULLEY ASS'Y	1
8	232-147	RING-Retaining	1
9	232-35	RING-Retaining	1
10	246-7	ROPE	1
11	136-2	INSERT-Handle	1
12	258-191	SCREW-Pan Head	4
13	263-133	SPRING-Actuator	1
14	263-79	SPRING-Recoil	1
15	304-320	WASHER	1

CARBURETOR LMG 176
39-874-500 & 39-956-500



Ref. No.	Part No.	Description	Qty.
1.	25-16-500	BOWL & DRAIN ASS'Y	1
2.	39-909	DRAIN ASS'Y	1
3.	82-2-500	FLOAT & LEVER ASS'Y	1
4.	* 39-928	GASKET KIT	1
5.	* 181-2	NEEDLE-Idle Adj.	1
6.	* 181-5-500	NEEDLE-Power Adj.	1
7.	* 293-30-500	NEEDLE & SEAT ASS'Y	1
8.	** 182-37	NOZZLE	1
9.	39-910	REPAIR KIT	1
10.	39-938	PLUG KIT	1
11.	263-82	SPRING-Idle Needle & Throttle Stop Screw	2
12.	6-446	CHOKE SHAFT KIT	1
13.	6-452	THROTTLE SHAFT KIT	1
14.	6-496	THROTTLE SHAFT KIT	1
15.	258-60	SCREW-Throttle Stop	1
16.	* 6-195	SHAFT-Float Hinge	1
17.	263-165	SPRING-Choke Return	1

* Indicates Parts In Repair Kit

** If Original Main Nozzle was Removed
Replace With Service Nozzle Only



MODEL VARIATIONS

419-0004-000

SEC. II DIVISION 1962
ISSUED MARCH 1975

The adaptation of Clinton Engines to a wide variety of uses, results in what is known as Model Variations. Following is a list of Models produced to date. Opposite each Engine Model listed are the Part Numbers required in addition to or in place of standard parts. Refer to Basic Parts List for parts not listed in the Model Variations. For replacement engine to fit special applications, external part change may be required.

ENGINES AND SHORT BLOCKS MARKED WITH A () INDICATES CRANKSHAFT CHANGE
See Page C of this Manual on "How to Identify Your Clinton Engine."

MODELS	CRANKSHAFT	NOTES	REPL. ENGINE #	SHORT BLOCK	MODELS	CRANKSHAFT	NOTES	REPL. ENGINE #	SHORT BLOCK
419-0004-001	46-825		(21637)	(149-659)					
419-0014-004	46-813	1, 2, 11	21638	(149-659)					
419-0004-005	46-932 -500	2, 3, 4, 11	21650	None					
419-0014-006	46-497	5, 6, 7, 11	21651	None					
419-0004-007	46-497	4	21637	149-659					
419-0004-008	46-497	4	21637	149-659					
419-0004-010	46-497	2, 8	21637	149-659					
419-0004-011	46-497	4	21637	149-659					
419-0004-012	46-497	2, 4	21637	149-659					
419-0004-013	46-494	2, 4	(21637)	(149-659)					
419-0004-014	46-788	9, 10	(21637)	(149-659)					
419-0004-015	46-497		21637	149-659					

419-0004-000 SERIES NOTES

- Note 1 Use 6-508-500 Camshaft Ass'y, 220-5-500 Pump-Oil, 18-44 Base Ass'y, 94-170-990 Seal-Oil.
- Note 2 Use 158-65 Tube-Breather, 69-269 Connector, 69-23 Elbow, 69-62 Mandrel.
- Note 3 Use 304-163 Washer-Thrust, 6-565-500 Camshaft, 220-5-500 Pump-Oil, 257-112 Screen, 158-476 Line-Oil, 18-130-500 Base-Engine, (7) 258-257-500 Screw Ass'y, 45-291 Cap-Oil, 216-22 Plug-Oil.
- Note 4 Use 83-10-500 Flywheel.
- Note 5 Use 6-568-500 Cam Gear & Pump Ass'y, 257-112 Screen-Pump, 18-132-500 Base-Engine, 232-205 Retainer-Shaft, 94-707 Gasket, 45-490 Cover-Gear, (4) 258-82-500 Screw Ass'y.
- Note 6 Use 1-121-500 Adaptor, 39-956-500 Carburetor, 159-200 Link.
- Note 7 Use 158-447 Tube-Primer, 259-900-500 Housing-Blower, 259-891 Shroud, 1-104 Adaptor-Primer, 31-1 Bulb.
- Note 8 Use 2-98 Plate-Air Cleaner, 94-549 Gasket, 2-99-990 Element, 45-175 Cover.
- Note 9 Use 259-897 Shroud-Decorative.
- Note 10 Use 45-66 Cover-Spark Plug.
- Note 11 Use 22-853-500 Block.



MODEL VARIATIONS

419-0005-000

SEC. II, DIVISION, 1962
Supersedes July, 1971
Revised April, 1975

The adaptation of Clinton Engines to a wide variety of uses, results in what is known as Model Variations. Following is a list of Models produced to date. Opposite each Engine Model listed are the Part Numbers required in addition to or in place of standard parts. Refer to Basic Parts List for parts not listed in the Model Variations. For replacement engine to fit special applications, external part changes may be required.

ENGINES AND SHORT BLOCKS MARKED WITH A () INDICATES CRANKSHAFT CHANGE
See Page C of this Manual on "How to Identify Your Clinton Engine."

MODELS	CRANKSHAFT	NOTES	REPL. ENGINE #	SHORT BLOCK	MODELS	CRANKSHAFT	NOTES	REPL. ENGINE #	SHORT BLOCK
419-0005-001	46-825		(21637)	(149-659)	419-0005-015	46-497	2, 4	(21637)	(149-659)
419-0015-004	46-813	1, 2, 3	21638	None	419-0005-016	46-494	2, 4	(21637)	(149-659)
419-0005-007	46-497	3, 4	21637	149-659	419-0005-017	46-497		21637	149-659
419-9005-008	46-497	Short Block Ass'y	None	149-659	419-0005-018	46-497	5	21637	149-659
419-5005-009	46-902	5, 6, 7, 8, 9, 10, 11	Note 18	None	419-0005-019	46-932-500	2, 3, 4, 19		None
419-0005-010	46-902	4, 5, 6, 7, 8, 10, 11, 12	Note 18	None					
419-0005-011	46-788	13, 14, 15, 16	Note 18	None					
419-0005-012	46-788	4	(21637)	(149-659)					
419-0005-013	46-788	17	(21637)	(149-659)					
419-0005-014	46-788	13, 15	(21638)	None					

419 SERIES NOTES

- Note 1 Use 6-508-500 Camshaft Ass'y, 220-5-500 Pump Ass'y, 158-53 Line-Oil Distributor, 18-44 Base Ass'y, 94-170-990 Seal-Oil, 22-853-500 Block Ass'y.
- Note 2 Use 216-1 Plug.
- Note 3 Use (2) 69-23 Breather-Elbow, (2) 69-69 Sleeve, 158-68 Tube-Breather, (2) 69-269 Connector, 39-747-990 Carburetor.
- Note 4 Use 83-10-500 Flywheel Ass'y.
- Note 5 Use 31-4 Primer Kit, 39-956-500 Carburetor, 26-657-500 Slide Ass'y, 259-375 Shroud (Carb.).
- Note 6 Use 277-389-500 Tank Ass'y, (2) 26-573 Bracket, (2) 258-875-500 Screw & L/W Ass'y, 45-344-500 Cap & Gauge Ass'y, 259-822-500 Shroud Ass'y, (2) 258-159 Screw.
- Note 7 Use 1-53 Adapter, 94-69 Gasket, 258-85 Screw, (2) 183-29-500 Nut & L/W Ass'y, 94-31 Gasket, (2) 258-284-500 Screw & L/W Ass'y, 159-73 Link (Gov.), (2) 94-13 Gasket, 900-340 Spacer, 2-144 Body-Air Cleaner, (2) 258-902 Screw.
- Note 8 Use 6-503-500 Camshaft Ass'y.
- Note 9 Use 83-119-500 Flywheel Ass'y, 107-38 Air Vane, 259-822-500 Housing Ass'y, 264-72-500 Motor & Pinion Ass'y, 26-733 Strap (Motor Mounting), 258-879-500 Screw & L/W Ass'y, 258-232-500 Screw & L/W Ass'y, 304-94 Washer (Flat), 307-80 Terminal Ground, 258-936-500 Screw & L/W Ass'y, 307-370-500 Wire Ass'y (Shorting), 268-33-500 Magneto Ass'y.
- Note 10 Use 216-25 Plug.
- Note 11 Use 69-18 Elbow-90°.
- Note 12 Use 259-587-500 Housing Ass'y.
- Note 13 Use 22-853-500 Block Ass'y.
- Note 14 Use 259-522-500 Housing Ass'y.
- Note 15 Use 6-509-500 Camshaft Ass'y, 220-5-500 Pump Ass'y, 158-53 Line-Oil Distributor.
- Note 16 Use 26-562-500 Bracket Ass'y, (2) 26-530 Strap, (2) 258-284-500 Screw & L/W Ass'y, 277-59-500 Tank Ass'y, 293-32-500 Valve Ass'y, 69-59 Nipple, 69-5 Connector.
- Note 17 Use 910-35 Air Horn, 900-340 Spacer, (2) 258-947 Screw, 94-11 Gasket, 45-34 Cover & Element, 2-219 Oil Cup, 258-163 Screw, 183-66 Nut.
- Note 18 Special Engine Order By Complete Model Number.
- Note 19 Use 22-853-500 Block, 304-163 Washer-Thrust, 6-565-500 Camshaft, 220-5-500 Pump, 257-112 Screen, 158-476 Line-Oil, 18-130-500 Base, 20-53 Bearing.