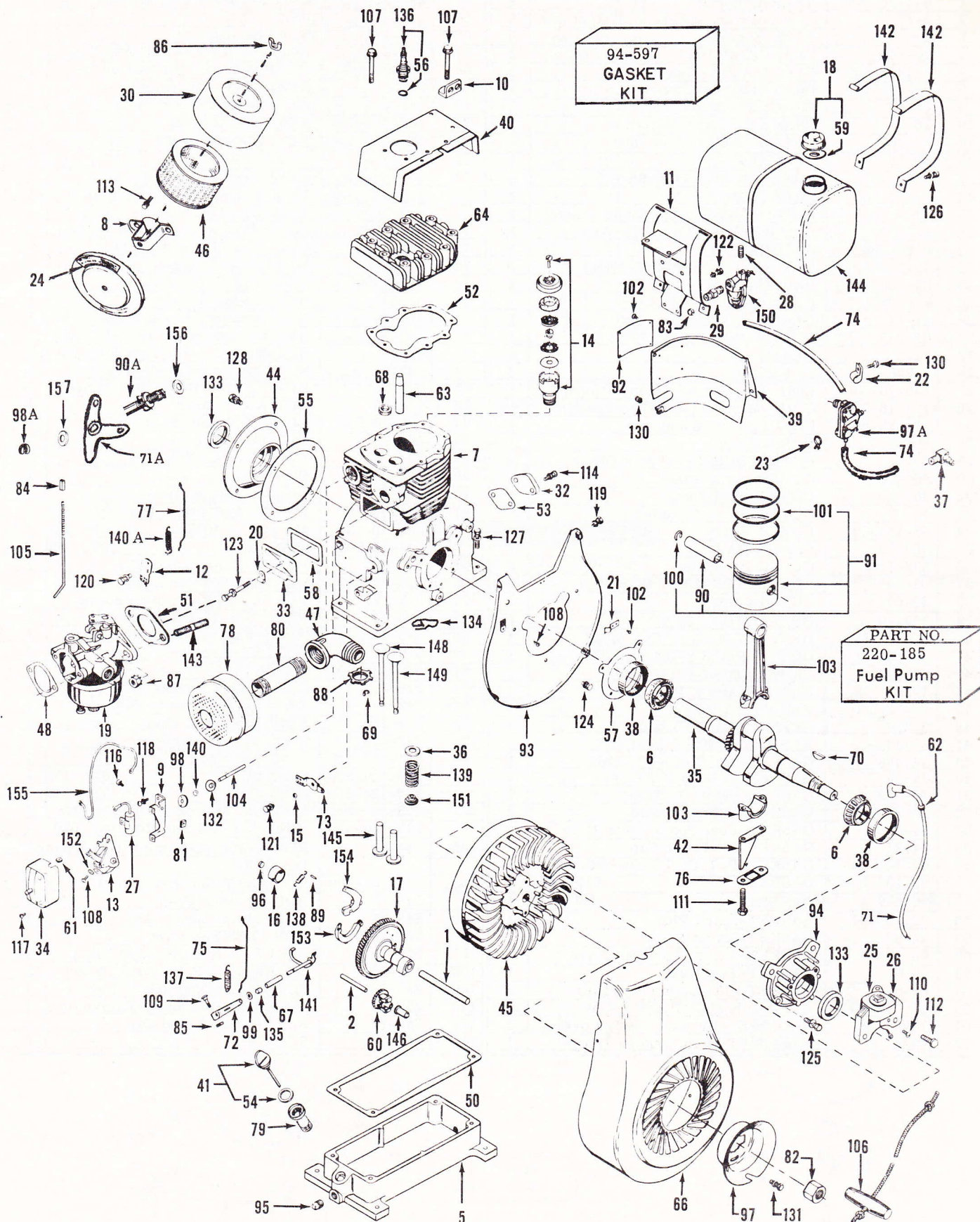


Clinton BASIC PARTS LIST

420-1302-105

File-SEC. II DIV. 1962
 BASIC PARTS LIST
 REVISED JUNE 1973



CLINTON ENGINES CORPORATION

MAQUOKETA, IOWA

420-1302-105 BASIC PARTS LIST

Ref. No.	Part No.	Description	Qty.	Ref. No.	Part No.	Description	Qty.
1	6-4	AXLE-Camshaft	1	63	291-21	GUIDE-Valve, Cyl. Block	2
2	6-10	AXLE-Governor Gear & Weight Ass'y	1	64	122-14	HEAD-Cyl.	1
5	18-39	BASE-Engine	1	66	259-126	HOUSING-Blower	1
6	20-66	BEARING-Roller	2	67	124-2-500	HOUSING & BEARING ASS'Y	1
7	22-869-500	BLOCK ASS'Y-Cyl.	1	68	136-90-990	INSERT-Valve Seat Exhaust	1
8	26-784-500	BRACKET-Air Cleaner	1	69	232-3	KEEPER-Valve Spring	4
9	26-13	BRACKET-Breaker Ass'y	1	70	148-6	KEY-Woodruff, Flywheel	1
10	26-27	BRACKET-Engine Hoisting	1	71	307-203-500	LEAD-Hi-Tension	1
11	26-209	BRACKET-Fuel Tank Mtg.	1	71A	157-123-500	LEVER ASS'Y-Pivot	1
12	26-783	BRACKET-Speed Adj.	1	72	157-73	LEVER-Governor	1
13	135-5-500	BREAKER POINTS ASS'Y	1	73	157-86-500	LEVER-Speed Control	1
14	29-23-500	BREATHER ASS'Y	1	74	158-357	LINE-Fuel(17 1/2 Pulse Line 3 3/4)	1
15	28-8	BUSHING-Governor, Control Lever	1	75	159-32	LINK-Gov. Throttle	1
16	157-23	CAM-Breaker (Camshaft Axle)	1	76	148-11	LOCK-Double Conn. Rod Screw	1
17	6-396-500	CAMSHAFT	1	77	159-37	LINK-Thr. Lever to Carb.	1
18	45-95-500	CAP & GASKET ASS'Y-Fuel	1	78	170-24	MUFFLER-Exhaust	1
19	39-1006-500	CARBURETOR ASS'Y	1	79	277-7-500	NECK ASS'Y-Oil Filler	1
20	81-3	CLAMP-Cable Ass'y	1	80	69-264	NIPPLE-Muffler	1
21	81-11	CLAMP-Hi Tension Lead	1	81	183-54	NUT-Breaker Pts. & Cond.-Brkt.	1
22	81-217	CLAMP-Fuel Line	1	82	183-59	NUT-Starter Pulley (7/8-14 SAE)	1
23	81-7	CLAMP	4	83	183-1	NUT-Hex. 1/4-28 (Tank Strap)	2
24	2-228	CLEANER	1	84	183-63	NUT-Speed Cont. Adj. Rod	1
25	135-15-500	COIL-Magneto(w/o Laminations)	1	85	183-53	NUT-Square #10-24 (Gov. Lever)	1
26	135-16-500	COIL-Magneto (With Laminations)	1	86	183-65	NUT-Air Cleaner	1
27	135-33-500	CONDENSER-Magneto	1	87	183-29-500	NUT & L'WASHER ASS'Y-Carb.	2
28	69-59	CONNECTOR	1	88	183-265	NUT-Muffler Lock	1
29	69-5	CONNECTOR-(Fuel Shut Off)	1	89	203-202	PIN-Camshaft Weight	2
30	45-498	COVER-Air Cleaner	1	90	203-67	PIN-Wrist	1
32	45-39	COVER-Fuel Pump	1	90A	203-208	PIN-Pivot-Gov. Lever	1
33	45-83	COVER-Valve Chamber	1	91	204-10-500	PISTON ASS'Y-Std. (Inc. Ref. Nos	1
34	45-13-500	COVER-Ass'y	1		206-10-500	90, 100, & 101) .010 OS	1
35	46-379	CRANKSHAFT	1		207-10-500	RING SET .020 OS	1
36	232-1	CUP-Valve Spring	2	92	58-471	PLATE-Name (Air Def.)	1
37	69-29	CONNECTOR-Elbow Pulse Line	1	93	215-97-500	PLATE ASS'Y-Back Blw. Hsg.	1
38	20-65	CUP-Bearing	2	94	215-127	PLATE ASS'Y-Magneto Stator	1
39	259-49	DEFLECTOR ASS'Y	1	95-	216-22	PLUG-3/8-18-Oil Drain	2
40	259-67-500	DEFLECTOR-Air, Cyl. Head	1	96	216-5	PLUG-Exp.-Camshaft	1
41	45-109-500	DIPSTICK ASS'Y-Oil Filler	1	97	219-18	PULLEY-Starter	1
42	220-141	DISTRIBUTOR-Oil	1	97A	220-183-500	PUMP-Fuel	1
44	1-20	FLANGE ASS'Y-P. T. O.	1	98	218-38	RETAINER-Breaker Seal	1
45	83-36-500	FLYWHEEL ASS'Y	1	98A	232-24	RETAINER-Lever to Piv. Pin	1
46	2-229	ELEMENT AIR CLEANER	1	99	232-37	RING-Ret.(Gov. Cont. Lever)	1
47	69-299	ELBOW 45° Street Muffler	1	100	232-43	RING-Ret. -Wrist Pin	2
48	94-458	GASKET-Air Cleaner to Carb.	1	101	233-117-500	RING SET-Std.	1
50	94-53	GASKET-Base to Block	1		235-124-500	RING SET .010 OS	1
51	94-539	GASKET-Carb. to Block	1		237-124-500	RING SET .020 OS	1
52	94-199	GASKET-Cylinder Head	1		233-140-500	RING SET-Chrome Re-Ring-Std.	1
53	94-6	GASKET-Fuel Pump Cover Hole	1		239-140-500	RING SET-Chrome Re-Ring .020	1
54	94-81	GASKET-Oil Filler Cap	1	102	244-21	RIVET-Tub.(4-Name Plt. 3-Clamp 7	7
55	94-109	GASKET-P. T. O. Flange-Std.	1			Back Plt.)	
	93-109	GASKET .010 OS	1	103	245-107-500	ROD ASS'Y (Inc. Ref. No. 111)	1
	95-109	GASKET .020 OS	1	104	245-17	ROD-Breaker Push	1
56	94-92-990	GASKET-Spark Plug	1	105	245-11	ROD-Speed Control Adj.	1
57	94-98	GASKET-Stator Plate	1	106	246-13-500	ROPE ASS'Y-Starter	1
58	94-104	GASKET-Valve Chamber Cover	1	107	258-89	SCREW-H. H. C. (Head to Blk.)	9
59	94-59	GASKET-Fuel Cap	1	108	258-83	SCREW-H. H. S. I. (Cond. & Prim.)	2
	94-598	GASKET KIT-Engine Overhaul	1	109	258-65	SCREW-Carriage (Gov. Lever)	1
60	106-43-500	GEAR & WEIGHT ASS'Y-Gov.	1	110	258-77	SCREW-Coil Ground, Lamination	1
61	70-8	GROMMET-Breaker Ass'y Cover	1	111	258-88	SCREW-Conn. Rod Cap	2
62	70-6	GROMMET-High Tension Lead	1	112	258-75	SCREW	2

420-1302-105 BASIC PARTS LIST

Ref. No.	Part No.	Description	Qty.	Ref. No.	Part No.	Description	Qty.
113	258-161-500	SCREW-Air Cleaner to Carb.	2	137	263-40	SPRING-Gov.	1
114	258-241-500	SCREW & L'WASHER ASS'Y	2	138	263-77	SPRING-Ignition Shift Weight	2
116	258-273-500	SCREW & L'WASHER ASS'Y	1	139	263-88	SPRING-Valve	2
117	258-41-500	SCREW & L'WASHER ASS'Y	2	140	263-163	SPRING-Comp. (Breaker Rod)	1
118	258-132-500	SCREW & L'WASHER ASS'Y	2	140A	263-45	SPRING-Back Lash Gov.	1
119	258-280-500	SCREW & L'WASHER ASS'Y	5	141	109-10-500	STOP & SHAFT ASS'Y-Gov.	1
120	258-936-500	SCREW & L'WASHER-Brkt. to Carb.	2	142	26-210	STRAP-Fuel Tank	2
121	258-287-500	SCREW & L'WASHER ASS'Y	1	143	24-18	STUD-Carb. to Block	2
122	258-232-500	SCREW & L'WASHER ASS'Y	3	144	277-67-500	TANK ASS'Y-Fuel	1
123	258-62-500	SCREW & L'WASHER ASS'Y	1	145	278-9	TAPPET-Valve	2
124	258-67-500	SCREW & L'WASHER ASS'Y	3	146	109-9	THIMBLE-Gov.	1
125	258-282-500	SCREW & L'WASHER ASS'Y	4	148	291-10-990	VALVE-Exhaust	1
126	258-254-500	SCREW & L'WASHER ASS'Y	2	149	291-12-990	VALVE-Intake	1
127	258-258-500	SCREW & L'WASHER ASS'Y	4	150	293-32-500	VALVE & FILTER ASS'Y	1
128	258-277-500	SCREW & L'WASHER ASS'Y	6	151	304-168	WASHER-Valve Spring Ret.	2
130	258-198-500	SCREW & L'WASHER ASS'Y	3	152	304-121	WASHER-Cond. To Bracket	1
131	258-220-500	SCREW & L'WASHER ASS'Y	2	153	305-20-500	WEIGHT-Ignition Shift	1
132	94-155	SEAL-Breaker Actuating Arm	1	154	305-21-500	WEIGHT-Ignition Shift	1
133	94-181-990	SEAL-Oil (1-Stator Plate)	1	155	307-126-500	WIRE ASS'Y-Breaker Points	1
	94-184-990	SEAL-Oil (1-P. T. O. Flange)	1	156	304-28	WASHER-Pivot Pin	1
134	259-726	SHIELD CAM-Breaker	1	157	304-88	WASHER-Pivot Pin	1
135	304-72	SPACER-Gov. Control Lever	1				
136	267-28-500	SPARK PLUG & GASKET ASS'Y	1				

GENERAL SPECIFICATIONS

BORE----- 3 1/8"
 STROKE ----- 3 1/4"
 CU. IN. DISP. ----- 25.0
 SPARK PLUG GAP -- .025

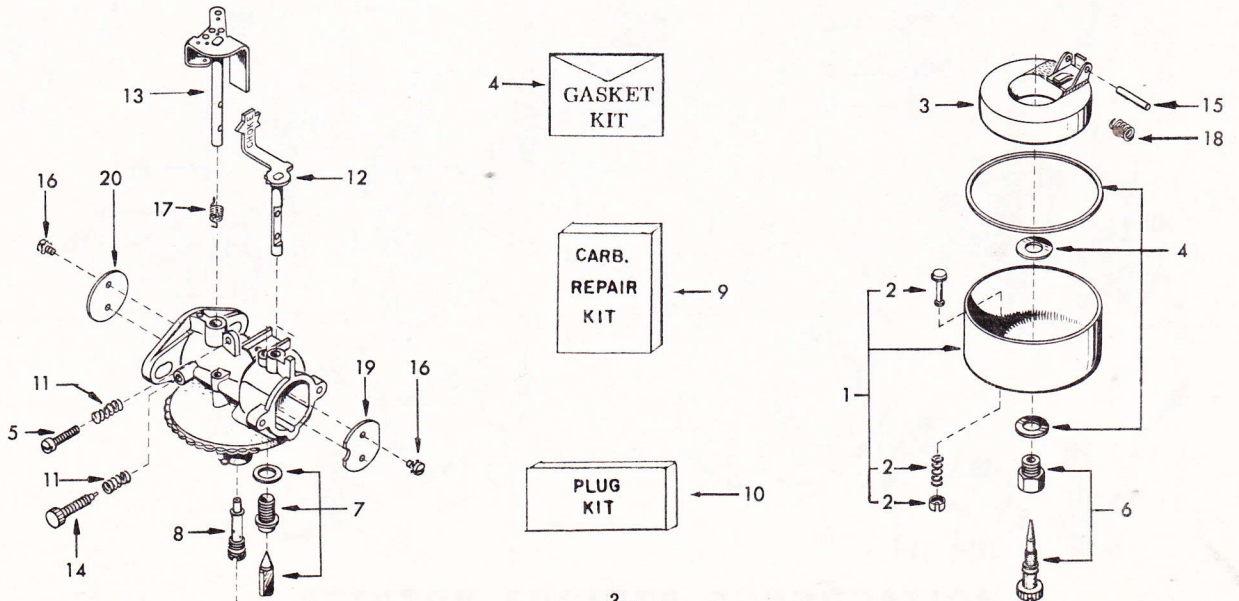
CARBURETION ----- Float
 FLOAT SETTING----- 3/32"
 POINT SETTING----- .021

OIL CAPACITY----- 5 Pt.
 HORSEPOWER ----- 9.6
 BLOCK ----- Cast Iron
 BEARINGS ----- Roller

CARBURETOR

39-1006-500 LME-64

Ref. No.	Part No.	Description	Qty.	Ref. No.	Part No.	Description	Qty.
1	25-16-500	BOWL & DRAIN ASS'Y	1	11	263-82	SPRING-Compression	2
2	39-909	DRAIN ASS'Y	1	12	6-560-500	SHAFT-Choke	1
3	82-2-500	FLOAT & LEVER ASS'Y	1	13	6-561-500	SHAFT-Throttle	1
4	39-928	GASKET KIT	1	14	258-60	SCREW-Throttle Stop	1
5	181-2	NEEDLE-Idle Adj.	1	15	6-195	SHAFT-Float Hinge	1
6	181-5-500	NEEDLE-Power Adj.	1	16	258-1097	SCREW-Valve Attach	4
7	293-209-500	NEEDLE & SEAT ASS'Y	1	17	263-445	SPRING-Throttle Return	1
8	182-58	NOZZLE-Service	1	18	263-444	SPRING-Float Hinge	1
9	39-1007	REPAIR KIT	1	19	293-206	VALVE-Choke	1
10	39-938	PLUG KIT	1	20	293-173	VALVE-Throttle	1





MODEL VARIATIONS

420-1302-105

SEC. II DIVISION 1962
ISSUED MAY 1974

The adaptation of Clinton Engines to a wide variety of uses, results in what is known as Model Variations. Following is a list of Models produced to date. Opposite each Engine Model listed are the Part Numbers required in addition to or in place of standard parts. Refer to Basic Parts List for parts not listed in the Model Variations. For replacement engine to fit special applications, external part change may be required.

ENGINES AND SHORT BLOCKS MARKED WITH A () INDICATES CRANKSHAFT CHANGE
See Page C of this Manual on "How to Identify Your Clinton Engine."

MODELS	CRANKSHAFT	NOTES	REPL. ENGINE #	SHORT BLOCK	MODELS	CRANKSHAFT	NOTES	REPL. ENGINE #	SHORT BLOCK
420-1322-102	46-793	1	Note 8		420-1302-113	46-379	5	Note 8	
420-1342-103	46-791	2	Note 8		420-1302-114	46-379	5	Note 8	
420-1362-104	46-791	3	21493		420-5302-117	46-379	6	21414	
420-1302-105	46-379	Std. Eng.	21494		420-1302-120	46-379		21494	
420-1302-106	46-380		(21494)		420-1302-126	46-379		21494	
420-1302-107	46-381		(21494)		420-1302-128	46-379		21494	
420-1302-108	46-382		(21494)		420-1302-143	46-382	7	Note 8	
420-1302-109	46-379		21494		420-1342-156	46-791	2, 4	Note 8	
420-1362-110	46-791	3	21493		420-1302-166	46-380	5	Note 8	
420-1302-112	46-379		21494		420-1302-167	46-382	5, 7	Note 8	

420-1302-105 SERIES NOTES

- Note 1 Use 200-812 2:1 Speed Reducer, Refer to Sec. III Div. C For Exploded View.
- Note 2 Use 200-814 4:1 Speed Reducer, Refer to Sec. III Div. C For Exploded View.
- Note 3 Use 200-815 5:1 Speed Reducer, Refer to Sec. III Div. C For Exploded View.
- Note 4 Use 83-37-500 Flywheel, 219-170 Pulley Rope (2) 258-86 Screw (2) 304-29 Washer, 304-653 Washer, 246-40-500 Starter Rope.
- Note 5 Use 122-15 Head Cylinder (2) 183-55 Nut, Tank Bracket (2) 69-290 Elbow 90^o, 277-66-500 Tank Ass'y, 69-59 Connector, 299-10 Valve, 158-397 Line Fuel, 158-403 Line Fuel (2) 183-245 Nut Ferrule, 81-157 Clamp, 293-26 Drain.
- Note 6 Refer to Sec. III Div. N Page 9 For Starter Generator Parts List & Exploded View.
- Note 7 Use 307-186 Lead Hi-Tension, (2) 258-75 Screw, 258-155 Screw, 259-271 Shield, 259-272 Shield Spark Plug, 81-14 Clamp.
- Note 8 Order Replacement Engine By Model Number.