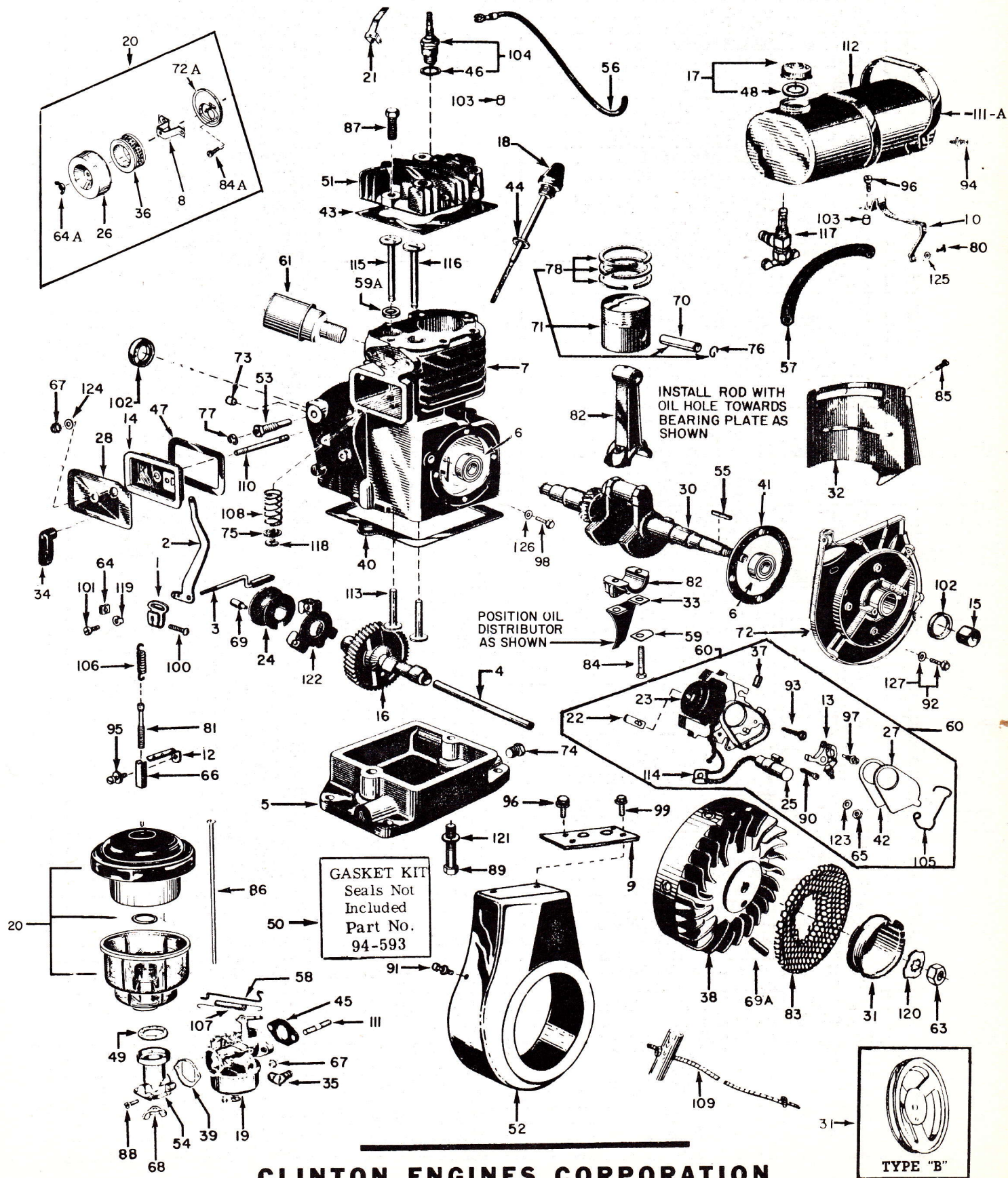




# BASIC PARTS LIST

SECTION II DIVISION 1962  
REVISED APRIL, 1975

## 492-1304-000



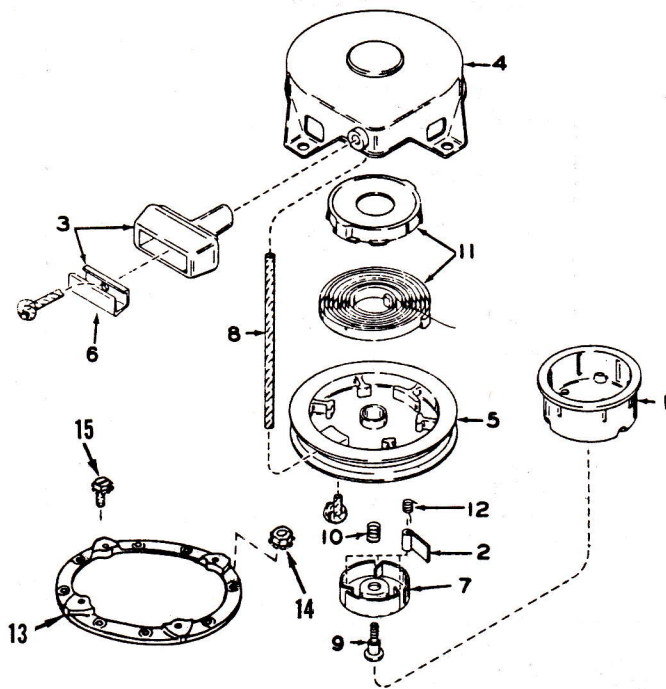
CLINTON ENGINES CORPORATION



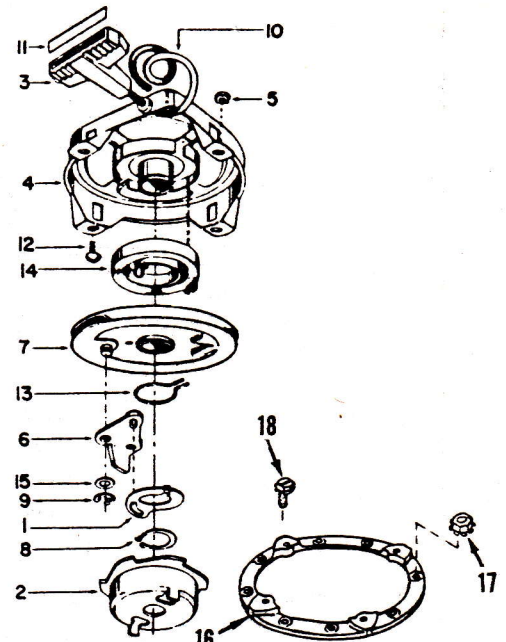
| Ref. No. | Part No.    | Description                                      | Qty. | Ref. No. | Part No.    | Description                               | Qty. |
|----------|-------------|--|------|----------|-------------|---|------|
| 1        | 107-4       | ADJUSTER-Gov. Arm                                | 1    | 68       | 183-66      | NUT-Wing (Air Cln. Screw)                 | 1    |
| 2        | 157-393     | ARM-Governor                                     | 1    | 69       | 203-38      | PIN-Retaining (Gov. Yoke)                 | 1    |
| 3        | 6-370-500   | ARM & WT. ASS'Y-Governor                         | 1    | 69A      | 203-21      | PIN-Flywheel (Type B)                     | 1    |
| 4        | 6-2         | AXLE-Camshaft                                    | 1    | 70       | 203-65      | PIN-Wrist                                 | 1    |
| 5        | 18-4        | BASE-Engine                                      | 1    | 71       | 204-13-500  | PISTON ASS'Y-Std.                         | 1    |
| 6        | 20-4        | BEARING  | 2    |          | 206-13-500  | PISTON ASS'Y-.010 O.S.                    |      |
| 7        | 22-122      | BLOCK ASS'Y-Cylinder                             | 1    |          | 207-13-500  | PISTON ASS'Y-.020 O.S.                    |      |
| 8        | 26-784-500  | BRACKET-Air Cleaner                              | 1    | 72       | 215-522     | PLATE-Bearing                             | 1    |
| 9        | 26-140      | BRACE-Blower Housing                             | 1    | 72A      | 2-230       | PLATE-Air Cleaner                         | 1    |
| 10       | 26-63-500   | BRACKET-Fl. Tk. Mtg. (R.H.)                      | 1    | 73       | 216-4       | PLUG-Camshaft Axle                        | 1    |
|          | 26-62-500   | BRACKET-Fl. Tk. Mtg. (L.H.)                      | 1    | 74       | 216-24      | PLUG-Oil Drain                            | 2    |
|          |             | (Not Illustrated)                                |      | 75       | 304-135     | RETAINER-Valve Spring                     | 2    |
| 12       | 26-557      | BRACKET-Thr. Adj.                                | 1    | 76       | 232-41      | RING-Retainer (Wrist Pin)                 | 2    |
| 13       | 135-7-500   | BREAKER POINTS ASS'Y                             | 1    | 77       | 232-155     | RING-Retainer (Gov. Shaft)                | 1    |
| 14       | 29-35-500   | BREATHER ASS'Y                                   | 1    | 78       | 233-112-500 | RING SET-Std.                             | 1    |
| 15       | 157-28      | CAM-Breaker Points                               | 1    |          | 233-136-500 | CHROME RING SET                           |      |
| 16       | 6-12        | CAMSHAFT   | 1    |          | 235-121-500 | RING SET-.010 O.S.                        |      |
| 17       | 45-95-500   | CAP & GASKET ASS'Y-Fuel                          | 1    |          | 237-121-500 | RING SET-.020 O.S.                        |      |
| 18       | 45-101-500  | CAP-Oil Filler                                   | 1    |          | 237-136-500 | CHROME RING SET-.020 O.S.                 |      |
| 19       | 39-200-990  | CARBURETOR ASS'Y                                 | 1    | 80       | 244-19      | RIVET-Tk. Strap to Housing                | 2    |
| 20       | 2-219-500   | CLEANER ASS'Y-Air (Type A & B)                   | 1    | 81       | 245-10      | ROD-Throttle Adj.                         | 1    |
|          | 2-232       | CLEANER ASS'Y-Air (Type C)                       | 1    | 82       | 245-61-500  | ROD ASS'Y-Conn. (Incl. Ref. Nos. 59 & 84) | 1    |
| 21       | 266-28      | CLIP-Shorting                                    | 1    |          |             |   |      |
| 22       | 81-20       | CLIP-Coil Holding                                | 1    | 83       | 257-31      | SCREEN-Revolver                           | 1    |
| 23       | 135-13-990  | COIL-Mag. (Without Lamin.)                       | 1    | 84       | 258-9       | SCREW-Conn. Rod Cap                       | 2    |
| 24       | 109-3-500   | COLLAR ASS'Y-Governor                            | 1    | 84A      | 258-131     | SCREW-Air Cleaner Cover                   | 2    |
| 25       | 135-29-990  | CONDENSER-Magneto                                | 1    | 85       | 258-936-500 | SCREW & L/W-Deflec. to Head               | 2    |
|          | 135-265-500 | CONDENSER-Magneto                                |      | 86       | 258-72      | SCREW-Air Cln. to Air Horn                | 1    |
| 26       | 45-499      | COVER-Air Cleaner                                | 1    | 87       | 258-86      | SCREW-Cyl. Head to Block                  | 6    |
| 27       | 45-15       | COVER-Dust Mag. Brk. Pts.                        | 1    | 88       | 258-105     | SCREW-Air Horn to Carb.                   | 2    |
| 28       | 45-80       | COVER-Valve Chamber                              | 1    | 89       | 258-173     | SCREW-Base to Block                       | 2    |
| 30       | 46-880      | CRANKSHAFT                                       | 1    | 90       | 258-299     | SCREW-Cond. to Plate                      | 1    |
| 31       | 219-34-500  | CUP-Starter (Type A)                             | 1    | 91       | 258-280-500 | SCREW & L/W-Hsg. to Brng. Plt.            | 4    |
|          | 219-172     | CUP-Starter (Type B)                             | 1    | 92       | 258-149-500 | SCREW & L/W-Brng. Plt. to Blk.            | 4    |
| 32       | 259-35      | DEFLECTOR-Air                                    | 1    | 93       | 258-108-500 | SCREW & L/W-Lam. to Brng. Plt.            | 2    |
| 33       | 220-37      | DISTRIBUTOR-Oil                                  | 1    | 94       | 258-244-500 | SCREW & L/W-Fl. Tk. Straps                | 2    |
| 34       | 158-415     | ELBOW-Breather                                   | 1    | 95       | 258-198-500 | SCREW & L/W-Speed Adj. Brkt.              | 2    |
| 35       | 69-24       | ELBOW-Hose Connector                             | 1    | 96       | 258-454-500 | SCREW & L/W-Tk. Straps to Hd.             | 2    |
| 36       | 2-233       | ELEMENT-Air Cleaner                              | 1    | 97       | 258-297-500 | SCREW & L/W-Brk. Points to Breaker Box    | 1    |
| 37       | 94-189      | FELT-Lub. Cam Follower                           | 1    |          |             |   |      |
| 38       | 83-112-500  | FLYWHEEL ASS'Y-W/Magnets                         | 1    | 98       | 258-251-500 | SCREW & L/W                               | 2    |
| 39       | 94-13       | GASKET-Air Horn to Carb.                         | 1    | 99       | 258-232-500 | SCREW & L/W-Deflec. to Hd.                | 1    |
| 40       | 94-118      | GASKET-Eng. Base to Block                        | 1    | 100      | 258-196     | SCREW-Gov. Adj. Arm                       | 1    |
| 41       | 94-25       | GASKET-Brng. Plt. (Std. .015)                    | 1    | 101      | 258-936-500 | SCREW & L/W-Gov. Brk. to Arm              | 1    |
|          | 92-25       | GASKET-Brng. Plt. (.005)                         |      | 102      | 94-165-990  | SEAL-Oil (Cyl. Block & Bearing Plate)     | 2    |
|          | 93-25       | GASKET-Brng. Plt. (.010)                         |      |          |             |   |      |
|          | 95-25       | GASKET-Brng. Plt. (.020)                         |      | 103      | 304-73      | SPACER-Tk. Strap to Cyl. Head             | 2    |
| 42       | 94-241      | GASKET-Brk. Pts. Cover                           | 1    | 104      | 267-5-500   | SPARK PLUG & GASK. ASS'Y                  | 1    |
| 43       | 94-38-990   | GASKET-Cylinder Head                             | 1    | 105      | 263-10      | SPRING-Brk. Box Cover                     | 1    |
| 44       | 94-81       | GASKET-Oil Filler Cap                            | 1    | 106      | 263-40      | SPRING-Governor                           | 1    |
| 45       | 94-31       | GASKET-Asb. Carb. to Block                       | 1    | 107      | 263-45      | SPRING-Backlash                           | 1    |
| 46       | 94-92-990   | GASKET-Spark Plug                                | 1    | 108      | 263-92      | SPRING-Valve                              | 2    |
| 47       | 94-101      | GASKET-Vlv. Chamber Cover                        | 2    | 109      | 246-40-500  | STARTER-Rope                              | 1    |
| 48       | 94-59       | GASKET-Fuel Tank Cap                             | 1    | 110      | 24-12       | STUD-Vlv. Chamber Cover                   | 1    |
| 49       | 94-11       | GASKET-Air Cln. to Air Horn                      | 1    | 111      | 24-13       | STUD-Carb. Mounting                       | 2    |
| 50       | 94-593      | GASKET KIT-Eng. Overhaul                         | 1    | 111A     | 26-151      | STRAP-Fuel Tank                           | 2    |
| 51       | 122-2       | HEAD-Cylinder                                    | 1    | 112      | 277-382-500 | TANK ASS'Y-Fuel                           | 1    |
| 52       | 259-144-500 | HOUSING-Blower                                   | 1    | 113      | 278-1       | TAPPET-Valve                              | 2    |
| 53       | 20-23       | HOUSING ASS'Y-Gov. Shaft Brng.                   | 1    | 114      | 307-230     | TERMINAL-Jamite Brk. Pts.                 | 1    |
| 54       | 69-306      | HORN-Casting (Air)                               | 1    | 115      | 291-1-990   | VALVE-Exhaust (Std.)                      | 1    |
| 55       | 148-4       | KEY-Flywheel                                     | 1    |          | 292-9-990   | VALVE-Exhaust (.010 O.S.)                 |      |
| 56       | 307-357-990 | LEAD-Hi Tension (Mag.)                           | 1    |          | 292-1       | VALVE-Exhaust (.032 O.S.)                 |      |
| 57       | 158-25      | LINE-Fuel Flexible                               | 1    | 116      | 291-3-990   | VALVE-Intake (Std.)                       | 1    |
| 58       | 159-37      | LINK-Carb. to Gov. Arm                           | 1    |          | 292-13-990  | VALVE-Intake (.010 O.S.)                  |      |
| 59       | 148-42      | LOCK-Conn. Rod Screws                            | 1    |          | 292-3       | VALVE-Intake (.032 O.S.)                  |      |
| 59A      | 136-16      | INSERT-Valve Seat                                | 1    | 117      | 293-37      | VALVE-Fuel Shut Off                       | 1    |
| 60       | 268-6-500   | MAGNETO ASS'Y-Complete                           | 1    | 118      | 304-90      | WASHER-"C" Vlv. Keeper                    | 2    |
| 61       | 170-159-500 | MUFFLER  | 1    | 119      | 304-125     | WASHER-Gov. Arm Adj.                      | 1    |
| 62       | 69-63       | NIPPLE-Muffler to Block                          | 1    | 120      | 304-622     | WASHER-Starter Cup                        | 1    |
| 63       | 183-32      | NUT-Hex Starter Pulley                           | 1    | 121      | 304-25      | WASHER-Lock (Base to Blk.)                | 2    |
| 64       | 183-53      | NUT-Gov. Adj. Arm                                | 1    | 122      | 109-15-500  | WEIGHT ASS'Y-Gov. Yoke                    | 1    |
| 64A      | 183-65      | NUT-Air Cleaner Cover                            | 1    | 123      | 304-290     | WASHER-Term. Cond. Lead                   | 1    |
| 65       | 183-21      | NUT-Term. Cond. Lead                             | 1    | 124      | 304-298     | WASHER-Vlv. Chamber Cover                 | 1    |
| 66       | 183-63      | NUT-Thr. Adj.                                    | 1    | 125      | 304-88      | WASHER-Tk. Strap to Hsg.                  | 2    |
| 67       | 183-29-500  | NUT & L/W ASS'Y-(1-Valve Cover, 2-Carb. to Blk.) | 3    | 126      | 304-94      | WASHER-Brng. Hold Down                    | 2    |
|          |             |  |      | 127      | 304-134     | WASHER-Brng. Plt. to Blk.                 | 4    |



RECOIL STARTER 265-280-500



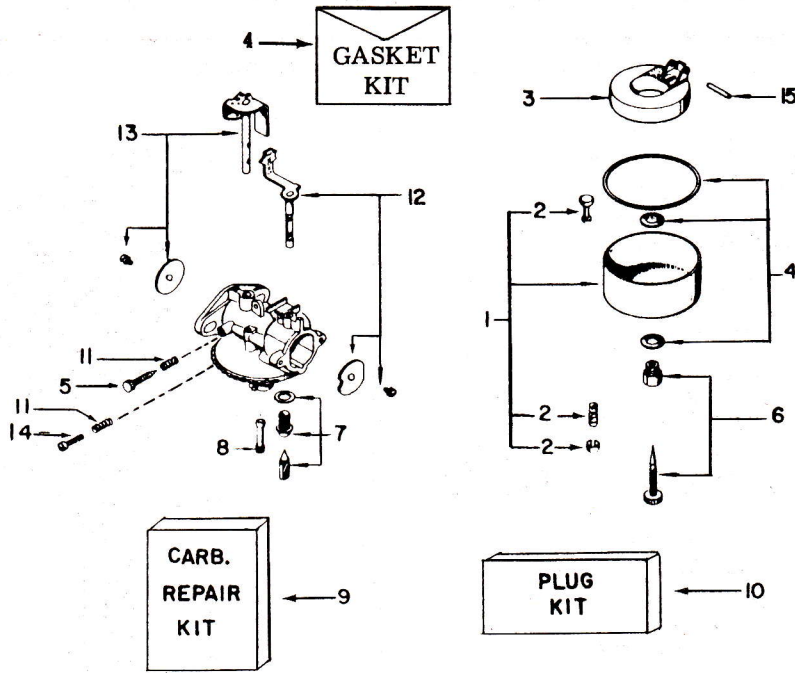
RECOIL STARTER 265-28-500



| Ref. No.  | Part No.    | Description             | Qty. | Ref. No. | Part No.    | Description                 | Qty. |
|---|-------------|-------------------------|------|----------|-------------|-----------------------------|------|
| 1   | 265-277     | CUP-Starter             | 1    | 1        | 157-2       | ACTUATOR                    | 1    |
| 2   | 157-505     | DOG-Starter             | 1    | 2        | 265-10      | CUP-Starter                 | 1    |
| 3   | 121-6-500   | HANDLE-Starting         | 1    | 3        | 121-6-500   | HANDLE                      | 1    |
| 4   | 124-210-500 | HOUSING ASS'Y           | 1    | 4        | 124-6-500   | HOUSING-Incl. Recoil Spring | 1    |
| 5   | 219-186-500 | PULLEY ASS'Y            | 1    | 5        | 183-25-500  | NUT & L'W ASS'Y             | 4    |
| 6   | 136-141     | REINFORCEMENT           | 1    | 6        | 157-129-500 | PAWL & PIN ASS'Y            | 1    |
| 7   | 232-213     | RETAINER-Dog            | 1    | 7        | 219-28-500  | PULLEY ASS'Y                | 1    |
| *8  | 246-7       | ROPE                    | 1    | 8        | 232-147     | RING-Retaining              | 1    |
| 9   | 258-1103    | SCREW                   | 1    | 9        | 232-35      | RING-Retaining              | 1    |
| 10  | 263-456     | SPRING-Brake            | 1    | 10       | 246-7       | ROPE                        | 1    |
| 11  | 265-278-500 | SPRING & CUP ASS'Y      | 1    | 11       | 136-2       | INSERT-Handle               | 1    |
| 12  | 263-459     | SPRING-Dog              | 1    | 12       | 258-191     | SCREW-Pan Head              | 4    |
| 13  | 900-162     | ADAPTOR-Ring            | 1    | 13       | 263-133     | SPRING-Actuator             | 1    |
| 14  | 183-25-500  | NUT-Recoil Ring         | 4    | 14       | 263-79      | SPRING-Recoil               | 1    |
| 15  | 258-880-500 | SCREW-Recoil To Adaptor | 4    | 15       | 304-320     | WASHER                      | 1    |
| *Required Length Rope Can Be Cut From Bulk 150" Roll<br>Part No. 246-38 |             |                         |      | 16       | 900-162     | ADAPTOR-Ring                | 1    |
|   |             |                         |      | 17       | 183-25-500  | NUT-Recoil Ring             | 4    |
|   |             |                         |      | 18       | 258-880-500 | SCREW-Recoil to Adaptor     | 4    |

SERVICE INFORMATION 492-1304-000

|                         |              |                       |              |
|-------------------------|--------------|-----------------------|--------------|
| Type of Carburetion     | Float        | Oil Capacity          | 1-1/4 Pints  |
| Bore                    | 2-3/8"       | Bearing-Flywheel End  | Ball         |
| Stroke                  | 1-7/8"       | Bearing-PTO End       | Ball         |
| Spark Plug Gap          | .025 to .028 | Valve Lash Setting    | .009 to .011 |
| Cubic Inch Displacement | 8.3          | RPM-Horsepower Rating | 4 @ 4000     |
| Point Setting Setting   | .018 to .021 | Block Construction    | Cast Iron    |



## FLOAT TYPE CARBURETORS

39-198-990, 39-200-990, 39-213-990  
 39-758-990, 39-817-500, 39-959-500



| Ref. No. | Part No.    | Description                     | 39-198-990 | 39-200-990 | 39-213-990 | 39-758-990 | 39-817-500 | 39-959-500 |
|----------|-------------|---------------------------------|------------|------------|------------|------------|------------|------------|
| 1        | 25-16-500   | BOWL & DRAIN ASS'Y              | 1          | 1          | 1          |            |            | 1          |
|          | 25-41-500   | BOWL & DRAIN ASS'Y              |            |            |            |            | 1          |            |
| 2        | 39-909      | DRAIN ASSEMBLY                  | 1          | 1          | 1          |            | 1          | 1          |
| 3        | 82-2-500    | FLOAT & LEVER ASS'Y             | 1          | 1          | 1          |            |            | 1          |
|          | 82-22-500   | FLOAT & LEVER ASS'Y             |            |            |            |            | 1          |            |
| 4        | *39-928     | GASKET KIT                      | 1          | 1          | 1          |            | 1          | 1          |
| 5        | *181-2      | NEEDLE-Idle Adj.                | 1          | 1          | 1          |            | 1          | 1          |
|          | 181-80      | NEEDLE-Idle Adj.                |            |            |            | 1          |            |            |
| 6        | *181-5-500  | NEEDLE-Power Adj.               | 1          | 1          | 1          |            | 1          | 1          |
|          | 181-82      | NEEDLE-Power Adj.               |            |            |            | 1          |            |            |
| 7        | *293-30-500 | NEEDLE & SEAT INLET             | 1          | 1          |            |            | 1          | 1          |
|          | *293-29-500 | NEEDLE & SEAT INLET             |            |            | 1          |            |            |            |
| 8        | ** 182-37   | NOZZLE                          | 1          | 1          | 1          |            | 1          | 1          |
| 9        | 39-910      | REPAIR KIT                      | 1          | 1          |            |            | 1          | 1          |
|          | *39-911     | REPAIR KIT                      |            |            | 1          |            |            |            |
| 10       | 39-938      | PLUG KIT                        | 1          | 1          | 1          |            | 1          | 1          |
| 11       | 263-82      | SPRING-Idle & Thr. Stop Screw   | 2          | 2          | 2          | 2          | 2          | 2          |
|          | 263-326     | SPRING-Power N'dle (Not Illus.) |            |            |            | 1          |            |            |
| 12       | 6-450       | CHOKE SHAFT KIT                 | 1          | 1          | 1          |            |            | 1          |
|          | 6-490       | CHOKE SHAFT KIT                 |            |            |            |            | 1          |            |
| 13       | 6-455       | THROTTLE SHAFT KIT              | 1          | 1          | 1          | 1          |            | 1          |
|          | 6-491       | THROTTLE SHAFT KIT              |            |            |            |            | 1          |            |
| 14       | 258-60      | SCREW-Throttle Stop             | 1          | 1          | 1          | 1          | 1          | 1          |
| 15       | *6-195      | SHAFT-Float Hinge               | 1          | 1          | 1          |            | 1          | 1          |

\* Indicates Parts In Repair Kit

\*\* If Original Main Nozzle Was Removed Replace With Service Nozzle Only.





# MODEL VARIATIONS

## 492-1304-000

SEC. II, DIV. 1962  
REVISED APRIL, 1975

The adaptation of Clinton Engines to a wide variety of uses, results in what is known as Model Variations. Following is a list of Models produced to date. Opposite each Engine Model listed are the Part Numbers required in addition to or in place of standard parts. Refer to Basic Parts List for parts not listed in the Model Variations. For replacement engine to fit special applications, external part change may be required.

ENGINES AND SHORT BLOCKS MARKED WITH A ( ) INDICATES CRANKSHAFT CHANGE  
See Page C of this Manual on "How to Identify Your Clinton Engine."

| MODELS       | CRANKSHAFT | NOTES               | REPL. ENGINE # | SHORT BLOCK | MODELS       | CRANKSHAFT | NOTES              | REPL. ENGINE # | SHORT BLOCK |
|--------------|------------|---------------------|----------------|-------------|--------------|------------|--------------------|----------------|-------------|
| 492-1304-005 | 46-880     |                     |                |             | 492-0304-018 | 46-880     | 12, 14, 15         |                |             |
| 492-1304-009 | 46-880     | 1, 2                |                |             | 492-0304-019 | 46-880     | 12, 14, 15         |                |             |
| 492-1304-010 | 46-880     | 1, 3, 4, 5          |                |             | 492-0304-020 | 46-930     | 2, 16, 17, 18      |                |             |
| 492-1304-011 | 46-880     | 1, 2, 5             |                |             | 492-1304-021 | 46-880     | 9                  |                |             |
| 492-1304-012 | 46-880     | 2, 5, 6, 7          |                |             | 492-1304-022 | 46-880     | 2, 7, 12, 14       |                |             |
| 492-1304-013 | 46-880     | 2, 5, 7, 8          |                |             | 492-1304-024 | 46-880     | 2, 3, 6, 8, 14, 19 |                |             |
| 492-1304-014 | 46-880     | 5, 6, 9             |                |             | 492-1304-025 | 46-880     | 8, 12, 14          |                |             |
| 492-1304-015 | 46-908     | 8, 10               |                |             | 492-0304-026 | 46-930     | 2, 16, 18, 20, 21  |                |             |
| 492-1304-016 | 46-919     | 3, 5, 6, 8, 11      |                |             | 492-0304-027 | 46-930     | 2, 15, 16, 20, 21  |                |             |
| 492-1304-017 | 46-880     | 3, 6, 8, 12, 13, 14 |                |             |              |            |                    |                |             |

### 492-1304-000 SERIES NOTES

- Note 1 Use 2-215-500 Air Cleaner Ass'y, 2-174 Element, 2-215 Base, 45-408-500 Cover, 183-266 Nut Wing, 94-13 Gasket, (2) 258-131 Screw.
- Note 2 Use 170-37-500 Muffler, 69-63 Nipple.
- Note 3 Use 45-66 Cover-Spark Plug.
- Note 4 Use 158-439-500 Line Ass'y-Fuel, 69-288 Elbow, 69-287 Connector, 293-170 Valve-Fuel Shut-Off.
- Note 5 Use 215-525 Bearing Plate, 22-838-500 Block Ass'y, 6-484 Camshaft, 215-526-500 Coil & Bracket Ass'y, 245-126 Push Rod-Breaker Points, 135-5-500 Breaker Point, 135-272-500 Condenser, (2) 258-83 Screw-Condenser & Breaker Point, 304-527 Washer-Flat, 304-380 Washer-Lock, 45-440-500 Cover Ass'y-Breaker Points, (2) 258-1015 Screw-Breaker Cover.
- Note 6 Use 293-32-500 Valve Filter, 69-59 Connector, 69-9 Connector.
- Note 7 Use 69-306 Horn-Air, 258-72 Screw, 2-219-500 Air Cleaner.
- Note 8 Use 219-34-500 Pulley, 304-132 Washer, 183-68-990 Nut, 246-13-500 Rope-Starter.
- Note 9 Use 122-3 Head, 259-104-500 Housing, 26-30 Bracket-Tank Mounting, (2) 26-161 Strap-Tank, (2) 183-53 Nut, (2) 258-244-500 Screw & L'Washer Ass'y, 69-25 Elbow, 277-80-500 Tank-Fuel, 293-10 Valve, 69-59 Connector, 69-5 Connector, 69-24 Connector, (2) 45-424-500 Cap-Fuel.
- Note 10 Use 83-13-500 Flywheel.
- Note 11 Use 259-104-500 Housing, 26-39 Tank-Mounting, (2) 26-161 Strap, (2) 258-244-500 Screw Ass'y, (2) 183-53 Nut, 277-61-500 Tank-Fuel, 45-424-500 Cap-Fuel.
- Note 12 Use 22-859 Block.
- Note 13 Use 39-958-500 Carburetor.
- Note 14 Use 6-484-500 Camshaft, 215-526-500 Coil, 70-7 Grommet, 307-119-500 Wire-Shorting, 258-81 Screw, 245-128 Rod, 26-13 Bracket-Breaker, 135-5-500 Breaker Points, 258-1069 Screw, 304-27 Washer-Spring, 304-377 Washer-Flat, 135-278 Condenser, 183-54 Nut, (2) 258-132-500 Screw, 45-13-500 Cover Ass'y, 70-8 Grommet, (2) 258-958-500 Screw & L'Washer Ass'y.
- Note 15 Use 26-140 Bracket-Blower Housing, 259-133-500 Housing-Blower, 265-277 Cup-Starter, 304-132 Washer-Flat, 900-162 Adaptor-Recoil, 265-280-500 Starter, (4) 258-241-500 Screw, (4) 183-25-500 Nut.
- Note 16 Use 304-28 Washer, 203-208 Pin-Pivot, 157-406-500 Lever Ass'y-Speed, 304-88 Washer, 304-24 Ring, 81-4 Clamp, 258-171 Screw, 183-25 Nut.
- Note 17 Use 69-48 Horn-Air, (2) 69-69 Mandrel, 158-65 Tube-Breather.
- Note 18 Use 265-10 Cup-Starter, 304-5 Washer, 183-68 Nut-Flywheel, 900-162 Adaptor-Recoil, 259-155-500 Housing-Blower, (4) 258-880-500 Screw Ass'y, (4) 183-25-500 Nut.
- Note 19 Use 22-873 Block.
- Note 20 Use 69-23 Elbow-Breather, 69-69 Mandrel, 69-269 Connector-Breather Tube, 158-369 Tube-Breather, 304-640 Adaptor, 69-324 Connector, 94-458 Gasket, (2) 258-902 Screws.
- Note 21 Use 2-230 Plate-Air Cleaner, 26-784-500 Bracket Ass'y, 2-233 Element, 45-499 Cover, 183-65 Nut-Wing.