

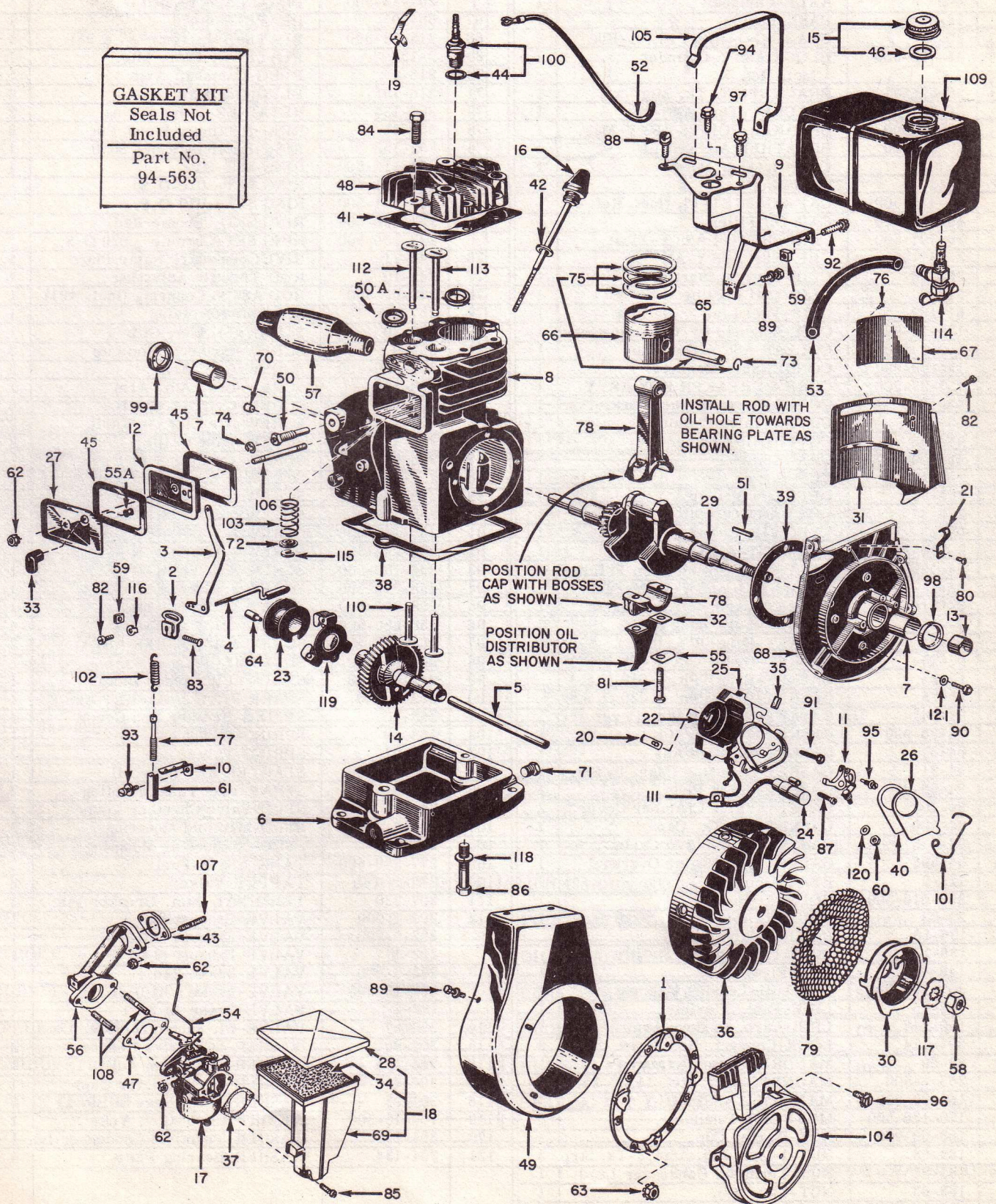


BASIC PARTS LIST

494-0100-000

SEC. II, DIV. 1962
494-0100-000
Issued May, 1962
Revised April, 1966

GASKET KIT
Seals Not
Included
Part No.
94-563



CLINTON ENGINES CORPORATION

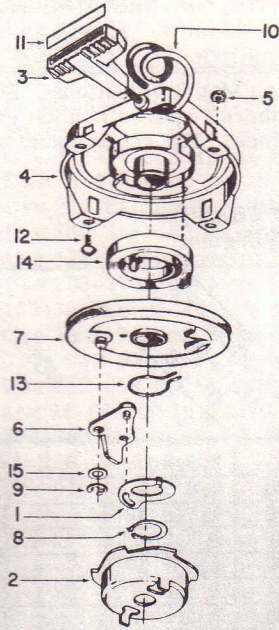
MAQUOKETA, IOWA, U.S.A.

494-0100-000 BASIC PARTS LIST

Ref. No.	Part No.	Description	Qty.	Ref. No.	Part No.	Description	Qty.
1	900-162	ADAPTOR-Recoil Mtg.	1	64	203-38	PIN-Retaining (Gov. Yoke)	1
2	107-4	ARM-Governor Adj.	1	65	203-65	PIN-Wrist	1
3	157-393	ARM-Governor Thr.	1	66	204-13-500	PISTON ASS'Y-Std.	1
4	6-370-500	ARM & WEIGHT ASS'Y-Gov.	1		206-13-500	PISTON ASS'Y-.010 O. S.	
5	6-2	AXLE-Camshaft	1		207-13-500	PISTON ASS'Y-.020 O. S.	
6	18-4	BASE-Engine	1	67	58-105	PLATE-Name	1
7	20-52	BEARING-1-Brng. Plt.-1-Blk.	2	68	215-82-500	PLATE-Brng. (Incl. #7 & 98)	1
8	22-708-500	BLOCK ASS'Y-Cylinder Incl. Ref. 7	1	69	2-157	PLATE-Air Clnr. Mtg.	1
9	26-596	BRACKET-Fl. Tk. Mtg.	1	70	216-4	PLUG-Camshaft Axle	1
10	26-557	BRACKET-Thr. Adj.	1	71	216-19	PLUG-Oil Drain	2
11	135-7-500	BREAKER POINTS ASS'Y-Mag.	1	72	304-135	RETAINER-Valve Spring	2
12	29-35-500	BREATHER ASSEMBLY	1	73	232-41	RING-Retainer, Wrist Pin	2
13	157-28	CAM-Breaker Points	1	74	232-155	RING-Retaining Gov. Shaft	1
14	6-12	CAMSHAFT	1	75	233-112-500	RING SET-Std.	1
15	45-424-500	CAP & GASKET-Fl. (Incl. Ref. 46)	1		235-121-500	RING SET-.010 O. S.	
16	45-101-500	CAP-Oil Filler	1		237-121-500	RING SET-.020 O. S.	
17	39-797-500	CARBURETOR ASS'Y-Float	1		233-136-500	RING SET-Chrome Std.	
18	2-157-500	CLEANER ASS'Y-Air	1		237-136-500	RING SET-Chrome .020 O.S.	
19	266-28	CLIP-Ignition Shorting	1	76	244-21	RIVET-Tubular, Name Plate	4
20	81-20	CLIP-Coil Holding	1	77	245-10	ROD-Throttle Adjusting	1
21	81-169	CLIP-Fuel Line	1	78	245-61-500	ROD ASS'Y-Connect. (Incl. #81)	1
22	135-13-990	COIL-Magneto (W/O Laminations)	1	79	257-31	SCREEN-Revolving	1
23	109-3-500	COLLAR ASS'Y-Governor	1	80	258-20	SCREW-Fl. Line Clip	1
24	135-29-990	CONDENSER-Magneto	1	81	258-9	SCREW-Connect. Rod Cap	2
25	135-37-500	CORE & BREAKER BOX ASS'Y	1	82	258-936-500	SCREW-Gov. Arm	3
26	45-15	COVER-Dust, Magneto Brk. Pts.	1	83	258-196	SCREW-Gov. Adj. Arm	1
27	45-80	COVER-Valve Chamber	1	84	258-86	SCREW-Cyl. Head to Blk.	6
28	45-386	COVER-Air Cleaner	1	85	258-105	SCREW-Air Clnr. to Carb.	2
29	46-609	CRANKSHAFT	1	86	258-173	SCREW-Base to Blk.	2
30	265-10	CUP-Recoil	1	87	258-299	SCREW-Condenser to Plate	1
31	259-35	DEFLECTOR-Air	1	88	258-239-500	SCREW & L'WASHER ASS'Y	1
32	220-37	DISTRIBUTOR-Oil	1	89	258-280-500	SCREW & L'WASHER ASS'Y	5
33	69-23	ELBOW-Breather	1	90	258-149-500	SCREW & L'WASHER ASS'Y	4
34	2-156-990	ELEMENT-Air Cleaner	1	91	258-108-500	SCREW & L'WASHER ASS'Y	2
35	94-189	FELT-Lubrication, Cam Follower	1	92	258-244-500	SCREW & L'WASHER ASS'Y	2
36	83-13-500	FLYWHEEL ASS'Y-W Magnets	1	93	258-198-500	SCREW & L'WASHER ASS'Y	2
37	94-516	GASKET-Carb. to Air Cleaner	1	94	258-279-500	SCREW & L'WASHER ASS'Y	1
38	94-118	GASKET-Eng. Base to Blk.	1	95	258-297-500	SCREW & L'WASHER ASS'Y	1
39	94-25	GASKET-Brng. Plt. (Std.)	1	96	258-880-500	SCREW & L'WASHER ASS'Y	4
	92-25	GASKET-Brng. Plt. (.005 U.S.)		97	258-232-500	SCREW & L'WASHER ASS'Y	2
	93-25	GASKET-Brng. Plt. (.010 U.S.)		98	94-163-990	SEAL-Oil (Bearing Plate)	1
	95-25	GASKET-Brng. Plt. (.020 O.S.)		99	94-162-990	SEAL-Oil (Cylinder Block)	1
40	94-241	GASKET-Breaker Pts. Cover	1	100	267-5-500	SPARK PLUG & GASKET ASS'Y	1
41	94-38-990	GASKET-Cylinder Head	1	101	263-10	SPRING-Breaker Box Cover	1
42	94-81	GASKET-Dipstick Ass'y	1	102	263-40	SPRING-Governor	1
43	94-31	GASKET-Asbestos (Man. to Blk.)	1	103	263-92	SPRING-Valve	2
44	94-92-990	GASKET-Spark Plug	1	104	265-28-500	STARTER ASS'Y-Recoil	1
45	94-101	GASKET-Valve Chamber Cover	2	105	26-594	STRAP-Fuel Tank Mounting	2
46	94-620	GASKET-Fl. Tk. Cap	1	106	24-9	STUD-Valve Chamber Cover	1
47	94-515	GASKET-Manifold to Carb.	1	107	24-13	STUD-Manifold Mounting	2
47A	94-593	GASKET KIT-Engine Overhaul	1	108	24-11	STUD-Carburetor Mounting	1
48	122-2	HEAD-Cylinder	1	109	277-396-500	TANK ASS'Y-Fuel	1
49	259-616-500	HOUSING-Blower	1	110	278-1	TAPPET-Valve	2
50	20-23	HOUSING ASS'Y-Gov. Shaft Brng.	1	111	307-230	TERMINAL-Jam. Breaker Pts.	1
50A	136-16	INSERT-Valve Seat		112	291-1-990	VALVE-Exhaust (Std.)	1
	136-17	INSERT-Valve Seat Stellite			292-9-990	VALVE-Exhaust (.010)	1
51	148-4	KEY-Flywheel	1		292-1	VALVE-Exhaust (9'32")	1
52	307-194-990	LEAD-Hi-Tension Magneto	1	113	291-3-990	VALVE-Intake (Std.)	1
53	158-25	LINE-Fuel, Flexible	1		292-13-990	VALVE-Intake (.010)	1
54	159-147	LINK-Carb. to Gov. Arm	1		292-3	VALVE-Intake (9'32")	1
55	304-114	LOCK-Connect. Rod Screw	2	114	293-37	VALVE-Fl. Shut-off, Flex. Line	1
55A	69-69	MANDREL-Hose Retaining	1	115	304-90	WASHER-"C" Valve Keeper	2
	268-6-500	MAGNETO-Incl. Ref. 11, 22, 24, 25	1	116	304-125	WASHER-Gov. Arm Adj.	1
56	169-90-500	MANIFOLD ASSEMBLY	1	117	304-5	WASHER-Lock (Starter Cup)	1
57	170-136-500	MUFFLER-Tubular	1	118	304-25	WASHER-Lock (Base to Block)	2
58	183-68-990	NUT-Starter Cup	1	119	109-15-500	WEIGHT ASS'Y-Gov. Yoke	1
59	183-53	NUT-1-Gov. Adj. Arm, 2-Tk. Strp.	3	120	304-290	WASHER-Terminal Condenser Ld.	1
60	183-21	NUT-Terminal Condenser Lead	1	121	304-134	WASHER-Bearing Plate	4
61	183-63	NUT-Thr. Adj.	1				
62	183-29-500	NUT & L'WASHER ASS'Y-Hex.	5				
63	183-25-500	NUT & L'WASHER-Recoil Adaptor	4				

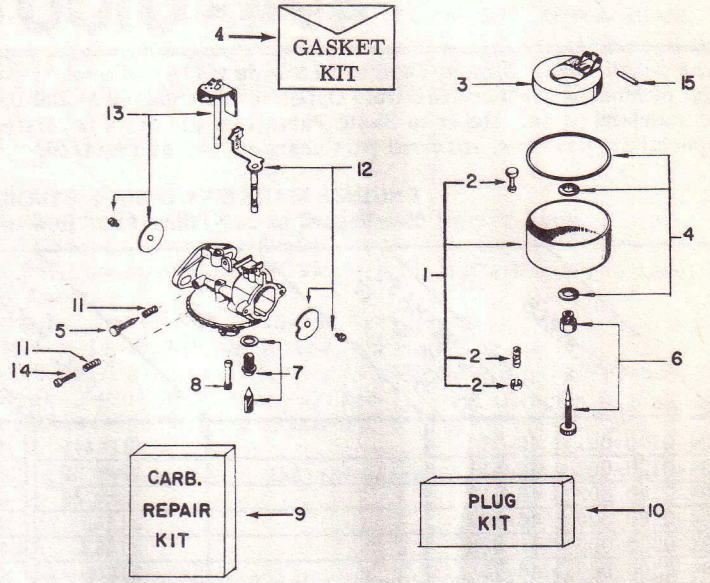
RECOIL STARTER

265-28-500



CARBURETOR

39-797-500, 39-812-500 & 39-840-500



Ref. No.	Part No.	Description	Qty.
1	157-2	ACTUATOR	1
2	265-10	CUP-Starter	1
3	121-6	HANDLE	1
4	124-6-500	HOUSING-Incl. Recoil Spring	1
5	183-25-500	NUT & L'WASHER ASS'Y	4
6	157-129-500	PAWL & PIN ASS'Y	1
7	219-28-500	PULLEY ASS'Y	1
8	232-147	RING-Retaining	1
9	232-35	RING-Retaining	1
10	246-7	ROPE	1
11	136-2	INSERT-Handle	1
12	258-191	SCREW-Pan Head	4
13	263-133	SPRING-Actuator	1
14	263-79	SPRING-Recoil	1
15	304-320	WASHER	1

Ref. No.	Part No.	Description	39-797-500	39-812-500	39-840-500
1	25-41-500	BOWL & DRAIN ASS'Y	1	1	1
2	39-909	DRAIN ASS'Y	1	1	1
3	82-22-500	FLOAT & LEVER ASS'Y	1	1	
4	*39-928	GASKET KIT	1	1	1
5	*181-2	NEEDLE-Idle Adj.	1	1	1
6	*181-5-500	NEEDLE-Power Adj.	1	1	
7	*293-30-500	NEEDLE & SEAT INLET	1	1	
8	**182-37	NOZZLE	1	1	
9	39-910	REPAIR KIT	1	1	
10	39-938	PLUG KIT	1	1	1
11	263-82	SPRING-Idle Needle & Throttle Stop Screw	2	2	2
12	6-490	CHOKE SHAFT KIT	1	1	1
13	6-491	THROTTLE SHAFT KIT	1	1	1
14	258-60	SCREW-Throttle Stop	1	1	1
15	*6-195	SHAFT-Float Hinge	1	1	

*Indicates Parts In Repair Kit

**If Original Main Nozzle Was Removed Replace With Service Nozzle Only

SERVICE INFORMATION 494-0100-000

BORE -----	2-3/8	POINT SETTING -----	.018 to .021
STROKE -----	1-7/8	OIL CAPACITY -----	1-1/4 Pt.
CUBIC INCH DISPLACEMENT -----	8.3	HORSEPOWER RATING -----	3-1/2
SPARK PLUG GAP -----	.025 to .028	BLOCK CONSTRUCTION -----	Clintalloy (Cast Iron)
CARBURETION -----	Float	BEARING FLYWHEEL END -----	Bronze
FLOAT SETTING -----	5/32"	BEARING P. T. O. END -----	Bronze or Ball

SEE PAGE 4 FOR MODEL VARIATIONS



MODEL VARIATIONS

494-0100-000

SEC. II, DIV. 1962
494-0100-000
Issued May, 1962
Revised April, 1966

The adaptation of Clinton Engines to a wide variety of uses, results in what is known as Model Variations. Following is a list of Models produced to date. Opposite each Engine Model listed are the Part Numbers required in addition to or in place of standard parts. Refer to Basic Parts List for parts not listed in the Model Variations. For replacement engine to fit special applications, external part changes may be required.

ENGINES MARKED WITH A () INDICATES CRANKSHAFT CHANGE
See Page C of this Manual on "How to Identify Your Clinton Engine."

MODELS	CRANKSHAFT Ref. to Sec. IV Div. B	NOTES	REPL. ENGINE #	MODELS	CRANKSHAFT Ref. to Sec. IV Div. B	NOTES	REPL. ENGINE #
494-0100-001	46-77		(21444)	494-1300-052	46-75	2, 8, 20	Note 29
494-0120-002	46-511	1	Note 29	494-1300-053	46-220	2, 8	21452
494-0140-003	46-512	1	Note 29	494-0160-054	46-509	1, 7, 9, 10, 11	21449
494-0160-004	46-509	1	21449	494-1300-055	46-506	2, 8, 20	Note 29
494-0300-005	46-808	2	21453	494-0100-056	46-609	4, 5, 7, 11	21444
494-0300-006	46-75	2	21609	494-1120-057	46-511	1, 6, 8	Note 29
494-0300-007	46-69	2	21455	494-1300-058	46-808	2, 8, 20	Note 29
494-0300-008	46-221	2	21454	494-1300-059	46-808	2, 7, 8, 14	21617
494-0100-009	46-609	3, 4, 5	21444	494-0300-060	46-808	2, 4, 5, 7, 9, 10, 11, 14	21453
494-0100-010	46-609	3, 4, 5	21444	494-1160-061	46-509	1, 8	21449
494-0100-011	46-66	6, 7	21441	494-1300-062	46-808	2, 8, 14, 20	Note 29
494-1300-012	46-808	2, 7, 8	21617	494-0300-063	46-808	2, 7, 14	21453
494-0100-013	46-609	9, 10, 11	21444	494-1300-064	46-808	2, 7, 8, 14	21617
494-1160-014	46-509	1, 7, 8	21449	494-0100-065	46-275	4, 7, 15	21441
494-1300-015	46-808	2, 7, 8	21617	494-1300-066	46-69	7, 8, 9, 10, 11, 21, 23	Note 29
494-0300-016	Same As 990-4207			494-0300-067	46-808	2, 4	21453
494-1100-017	46-609	7, 8	21522	494-1300-068	46-808	2, 7, 8	21617
494-1100-018	46-66	6, 7, 8	21441	494-1300-069	46-808	2, 3, 4, 8, 17, 22	21617
494-1300-019	46-808	2, 7, 8	21617	494-1300-070	46-808	2, 7, 8	21617
494-0160-020	46-509	1, 9, 10, 11	21449	494-0300-071	46-808	9, 12, 23, 24, 25	Note 29
494-0300-021	46-808	2, 9, 10, 11	21453	494-1100-072	46-609	4, 7, 11	21522
494-0300-022	46-221	2, 7, 12	21454	494-1100-073	46-609	6, 8	21571
494-0160-023	46-509	1, 7	21449	494-1300-074	46-506	2, 8, 11	21616
494-1300-024	46-69	2, 7, 8	21455	494-1300-075	46-221	8, 9, 14, 21, 24, 25	Note 29
494-0300-025	46-808	2, 4, 7	21453	494-0300-076	46-808	2	21453
494-0100-026	46-609	3, 4, 5, 11, 13, 14	21444	494-1300-077	46-808	2, 4, 7, 8, 11, 14, 16, 18	21617
494-1300-027	46-220	2, 7, 8	21452	494-1300-078	46-69	2, 8, 20	Note 29
494-0100-028	46-609	4, 5, 7	21444	494-0160-079	46-509	1, 4, 5, 9, 10, 11	21449
494-0100-029	46-609	6	21522	494-0100-080	46-66	13, 19	21441
494-0100-030	46-609	4, 11, 15	21441	494-0100-081	46-609	4, 11, 14, 26	21444
494-0300-031	46-273	2, 4, 11	(21450)	494-0160-082	46-509	1, 4, 5, 7, 9, 10, 11	21449
494-0300-032	46-272	2, 4, 11	(21450)	494-1300-083	46-808	2, 8, 14	21617
494-1100-033	46-609	4, 8, 11	21522	494-0300-084	46-808	2, 7	21453
494-1100-034	46-275	4, 8, 11	21441	494-0300-085	46-808	2, 3, 4, 5, 11, 13, 14	21560
494-0100-035	46-609	4, 11	21444	494-1300-086	46-69	2, 7, 8, 9, 10, 11, 14, 27	21455
494-0100-036	46-275	4, 11	21441	494-1300-087	46-506	2, 7, 8, 9, 10, 11, 14, 27	21616
494-0300-037	46-69	2, 4, 11	21455	494-1100-088	46-609	8	21522
494-0300-038	46-221	2, 4, 11	21454	494-0100-089	46-609	4, 5	21444
494-0300-039	46-808	2, 4, 11	21453	494-1300-090	46-808	2, 8, 20	Note 29
494-0300-040	46-220	2, 4, 11	21452	494-0300-091	46-808	2, 7	21453
494-0300-041	46-270	2, 4, 11	(21450)	494-1300-092	46-808	2, 7, 8	21617
494-0160-042	46-509	1, 4, 11	21449	494-1300-093	46-808	2, 4, 5, 8	21617
494-0300-043	46-506	2, 4, 11	21450	494-0100-094	46-609	4, 5, 7, 11	21444
494-0100-044	46-609	7	21444	494-0300-095	46-808	4, 5, 12, 19, 21, 24, 28	Note 29
494-0100-045	46-609		21444	494-1160-096	46-509	1, 4, 5, 7, 8, 9, 10, 11	21449
494-1100-046	46-275	4, 7, 8, 14	21441	494-1300-097	46-221	2, 7, 8, 9, 12	21454
494-0300-047	46-69	2, 7, 9, 10, 11, 14	21455	494-0300-098	46-808	2, 11	21453
494-0100-048	46-609	4, 7, 11, 16	21444	494-1100-099	46-66	7, 8	21441
494-1300-049	46-75	2, 7, 8	21609	494-1100-100	46-275	4, 5, 8, 14	21541
494-0300-050	46-808	2, 4, 11, 13, 17, 18, 19	21560	494-1300-101	46-808	2, 4, 8	21617
494-1100-051	46-275	7, 8	21441	494-0100-102	46-609	4, 7	21444

494-0100-000 SERIES NOTES

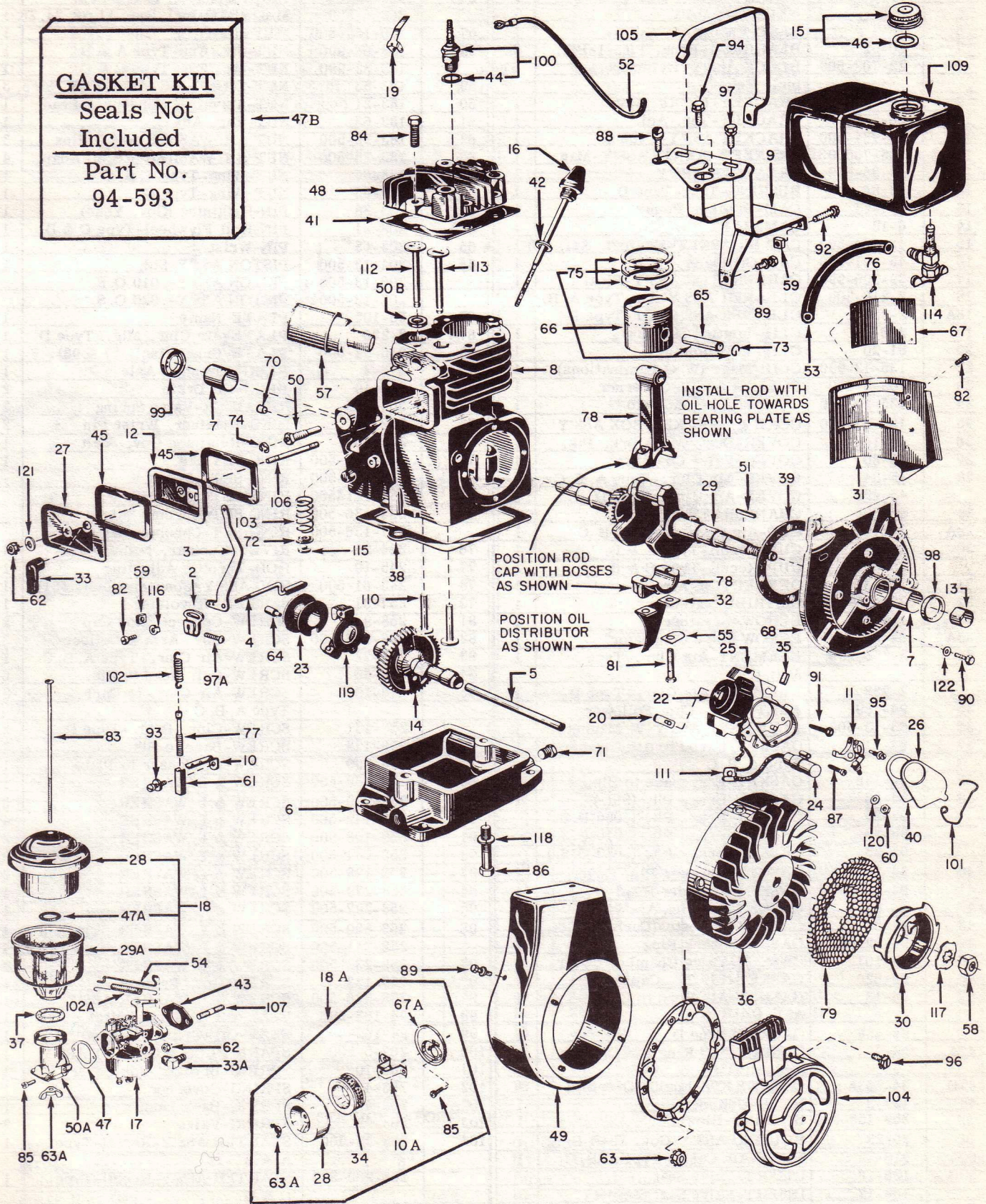
- Note 1 Use 22-708-500 Block Ass'y, 94-163-990 Oil Seal Block. Refer to Section III, Div. C, Page 1, for exploded view and parts list of Gear Reducer.
- Note 2 Use 22-122 Block, 20-4 Bearing, (2) 258-251-500 Screw (Bearing Hold Down), 94-165-990 Oil Seal Block.
- Note 3 Use 170-18-500 Muffler and 183-37 Lock Nut.
- Note 4 Use 157-123-500 Lever (Remote Control), 232-24 Retainer, 304-88 Washer Flat, 203-208 Pivot-Pin, 304-28 Washer Lock, 81-3 Cable Clamp, 258-171 Screw, and 183-25-500 Nut. See SK558, Sec. III, Div. D, Page 6.
- Note 5 Use 307-31-500 Cable Remote Control (Cut to length required).
- Note 6 Use 18-6 Base.
- Note 7 Use 277-61-500 Fuel Tank and (2) 26-595 Fuel Tank Strap.
- Note 8 Use 259-613-500 Blower Housing, 219-34-500 Starter Rope Pulley and 246-13-500 Starter Rope.
- Note 9 Use 124-1-500 Housing (Governor Shaft), 304-71 Spacer (Governor Shaft).
- Note 10 Use 293-170 Fuel Shut Off Valve Tank, (2) 69-287 Connector (Shut Off Valve to Line) (Carburetor to Line) 158-390 Line Fuel, (2) 183-244 Nut & Ferrule Ass'y.
- Note 11 Use 39-812-500 Carburetor, 158-74 Breather Tube, and 69-269 Connector Breather Tube.
- Note 12 This Unit Requires Commercial Ignition Shield. Refer to Section III, Div. Q, Page 1 or 2.
- Note 13 Use 259-658-500 Housing Ass'y, Blower, 26-140 Bracket (Blower Housing to Cylinder Head), 26-62-500 and 26-63-500 Bracket and Strap (Tank Mounting), (2) 304-88 Washer, (2) 244-19 Rivet (Bracket to Housing), 277-382-500 Tank, 45-95-500 Cap (Fuel), (2) 258-244-500 Screw & L'Washer, (2) 304-73 Spacer and (2) 258-71 Screw.
- Note 14 Use 910-35 Air Horn, 94-11 Gasket, 2-219-500 Air Cleaner Ass'y, 258-163 Screw (Air Cleaner to Air Horn), 183-66 Nut (Wing).
- Note 15 Use 216-27 Plug (Base Oil Drain).
- Note 16 Use 170-70-500 Muffler 45^o, 183-37 Nut Lock.
- Note 17 Use 307-121-500 Wire Ass'y Shorting, 183-26 Nut (Shorting Wire to Stator) 70-7 Grommet, 258-936-500 Screw (Wire to Grommet) 45-68-500 Spark Plug Cover.
- Note 18 Use (2) 81-3 Clamp (Cable), 304-39 Spacer, 258-243-500 Screw. See SK556, Sec. III, Div. D, Page 6.
- Note 19 Use 2-198 Air Cleaner Ass'y, 2-144 Body (Air Cleaner), 2-175-990 Element, 45-337 Cover (Air Cleaner), (2) 94-13 Gasket (Air Cleaner to Spacer & Spacer to Carburetor), 900-340 Spacer Air Cleaner, 304-562 Washer, (2) 258-902 Screw Air Cleaner Mounting, 69-24 Connector (Carb. to Fuel Line).
- Note 20 Use 277-80-500 Tank Ass'y, 26-39 Bracket Fuel Tank, (2) 26-161 Strap Fuel Tank, 258-26-500 Screw (Strap to Bracket), (2) 183-53 Nut, 69-25 Connector, 69-59 Nipple, 293-10 Valve (3 Way), 69-24 Elbow, 69-5 Connector, 122-3 Head Cylinder, (6) 258-116 Screw (Head to Block).
- Note 21 Use 22-127 Block, 136-17 Valve Insert (Stellite), 20-4 Bearing, (2) 258-251-500 Screw (Bearing Hold Down), 94-165-990 Oil Seal Block.
- Note 22 Use 277-61-500 Tank Ass'y, 26-39 Bracket (Tank Mounting), (2) 26-161 Strap (Fuel Tank), 258-26-500 Screw (Strap to Bracket), (2) 183-53 Nut, 159-37 Link Governor, 263-45 Spring (Back Lash Governor).
NOTE: Carburetor or Air Cleaner not Supplied by Clinton.
- Note 23 Use 263-30 Spring (Valve Exhaust), 291-19-500 Roto Cap Ass'y, 291-18-990 Valve (Stellite Exhaust), 203-58 Pin (Valve Spring Retaining). Use Standard Exhaust Valve as Intake.
- Note 24 Use 291-2-990 Valve (Stellite Exhaust). Use Standard Exhaust Valve For Intake.
- Note 25 Use 39-840-500 Carburetor, 94-515 Gasket (Manifold to Carburetor), 26-641 Bracket (Regulator Mounting), 231-10-500 Regulator Ass'y, (2) 258-82-500 Screw (Regulator Mounting), 25-42 Filter Ass'y (L. P. G.) 182-57 Jet Ass'y Discharge, 293-175-500 Valve Ass'y-Inlet (Adjusting), 69-294-500 Connector Ass'y (Idle), (2) 158-25 Line Fuel (Main & Idle), (4) 81-7 Clamp Fuel Line, 69-269 Connector Breather Tube, 158-74 Tube Breather.
- Note 26 Use 69-16 Elbow Muffler (45^o), 183-37 Lock Nut.
- Note 27 Use 45-68-500 Spark Plug Cover.
- Note 28 Use 26-140 Bracket Blower Housing. NOTE: Fuel Tank Not Supplied by Clinton.
- Note 29 Special Engine. Order by Complete Model Number.

Clinton BASIC PARTS LIST

494-0101-000

SECTION II DIVISION 1962
 ISSUED FEBRUARY 1963
 REVISED JUNE 1975
 SUPERSEDES APRIL 1966

GASKET KIT
 Seals Not
 Included
 Part No.
 94-593



CLINTON ENGINES CORPORATION
 MAQUOKETA, IOWA

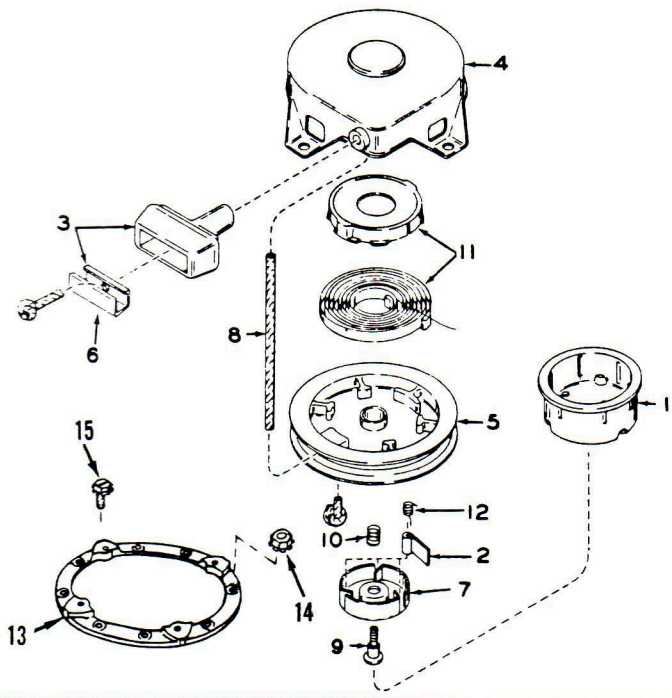
Printed in U.S.A.

Ref. No.	Part No.	Description	Qty.	Ref. No.	Part No.	Description	Qty.
1	900-162	ADAPTOR-Recoil Mtg.	1	52	307-194-990	LEAD-Hi-Tension Magneto	1
2	107-4	ARM-Governor Adj.	1	53	158-25	LINE-Fuel, Flexible	1
3	157-393	ARM-Governor Thr.	1	54	159-37	LINK-Carb. to Gov. Arm	1
4	6-370-500	ARM & WEIGHT ASS'Y-Gov.	1	55	148-42	LOCK-Connect. Rod Screw	1
5	6-2	AXLE-Camshaft	1		268-6-500	MaGNETO-Incl. Ref. 11, 22, 24, 25	1
6	18-4	BASE-Engine	1	57	170-159-500	MUFFLER	1
7	20-52	BEARING-1-Brng. Plt. -1-Blk.	2	58	183-68-990	NUT-Str. Cup-Type A & B	1
8	22-708-500	BLOCK ASS'Y- Cylinder	1		183-32-990	NUT-Str. Cup-Type C & D	1
		Incl. Ref. 7		59	183-53	NUT-1-Gov. Adj. Arm, 2-Tk. Strp.	3
9	26-39	BRACKET-Fl. Tk. Mtg.	1	60	183-21	NUT-Terminal Condenser Lead	1
10	26-557	BRACKET-Thr. Adj.	1	61	183-63	NUT-Thr. Adj.	1
10A	26-784-500	BRACKET ASS'Y-Type D	1	62	183-29-500	NUT & L'WASHER ASS'Y-Hex.	3
11	135-7-500	BREAKER POINTS ASS'Y-Mag.	1	63	183-25-500	NUT & L'WASHER-Recoil Adapt.	4
12	29-35-500	BREATHER ASS'Y	1	63A	183-66	NUT-Wing-Type A, B, C	1
12A	28-86	BUSHING-Tank-Type D	1		183-65	NUT-Wing-Type D	1
13	157-28	CAM-Breaker Points	1	64	203-38	PIN-Retaining (Gov. Yoke)	1
14	6-12	CAMSHAFT	1	64A	203-21	PIN-Roll Flywheel-Type C & D	1
15	45-424-500	CAP & GASKET-Fl. (Incl. Ref. 46)	1	65	203-65	PIN-Wrist	1
16	45-101-500	CAP-Oil Filler	1	66	204-13-500	PISTON ASS'Y-Std.	1
17	39-200-990	CARBURETOR ASS'Y-Float	1		206-13-500	PISTON ASS'Y-.010 O.S.	
18	2-219-500	CLEANER ASS'Y-Air-Type A, B, C	1		207-13-500	PISTON ASS'Y-.020 O.S.	
18A	2-232	CLEANER ASS'Y-Air-Type D	1	67	58-105	PLATE-Name	1
19	266-28	CLIP-Ignition Shorting	1	67A	2-230	PLATE-Air Clnr. Mtg. -Type D	1
20	81-20	CLIP-Coil Holding	1	68	215-82-500	PLATE-Brng. (Incl. #7 & 98)	1
22	135-13-990	COIL-Mag. (W/O Laminations)	1	70	216-4	PLUG-Camshaft Axle	1
23	109-3-500	COLLAR ASS'Y-Governor	1	71	216-19	PLUG-Oil Drain	2
24	135-29-990	CONDENSER-Magneto	1	72	304-135	RETAINER-Valve Spring	2
25	135-37-500	CORE & BREAKER BOX ASS'Y	1	73	232-41	RING-Retainer, Wrist Pin	2
26	45-15	COVER-Dust, Mag. Brk. Pts.	1	74	232-155	RING-Retaining Gov. Shaft	1
27	45-80	COVER-Valve Chamber	1	75	233-112-500	RING SET-Std.	1
28	45-34	COVER-Air Clnr. -Type A, B, C	1		235-121-500	RING SET-.010 O.S.	
	45-499	COVER-Air Clnr. -Type D	1		237-121-500	RING SET-.020 O.S.	
29	46-609	CRANKSHAFT	1		233-136-500	RING SET-Chrome Std.	
29A	2-219	CUP-Air Clnr. -Type A, B, C	1		237-136-500	RING SET-Chrome .020 O.S.	
30	265-10	CUP-Recoil-Type A & B	1	76	244-21	RIVET-Tubular, Name Plate	4
	265-277	CUP-Recoil-Type C & D	1	77	245-10	ROD-Throttle Adjusting	1
31	259-35	DEFLECTOR-Air	1	78	245-61-500	ROD ASS'Y-Connect. (Incl. #81)	1
32	220-37	DISTRIBUTOR-Oil	1	79	257-31	SCREEN-Revolving	1
33	158-415	ELBOW-Breather	1	81	258-9	SCREW-Connect. Rod Cap	2
33A	69-24	ELBOW-Hose Connector	1	82	258-936-500	SCREW-Gov. Arm & Deflec.	3
34	2-156-990	ELEMENT-Air Clnr. -Type A, B, C	1	83	258-72	SCREW-Air Clnr. -Type A, B, C	1
	2-233	ELEMENT-Air Clnr. -Type D	1	84	258-86	SCREW-Cyl. Head to Blk.	6
35	94-189	FELT-Lub., Cam Follower	1	85	258-105	SCREW-Air Clnr. to Carb. -Type A, B, C	2
36	83-13-500	FLYWHEEL ASS'Y-W/Magnets	1		258-131	SCREW-Clnr. Brkt. -Type D	2
37	94-11	GASKET-Carb. to Air Cleaner	1	86	258-173	SCREW-Base to Blk.	2
		Type A, B, C		87	258-299	SCREW-Condenser to Plate	1
38	94-118	GASKET-Eng. Base to Blk.	1	88	258-239-500	SCREW & L/WASHER	1
39	94-25	GASKET-Brng. Plt. (Std.)	1	89	258-280-500	SCREW & L/WASHER	5
	92-25	GASKET-Brng. Plt. (.005 U.S.)		90	258-149-500	SCREW & L/WASHER	4
	93-25	GASKET-Brng. Plt. (.010 U.S.)		91	258-108-500	SCREW & L/WASHER	2
	95-25	GASKET-Brng. Plt. (.020 O.S.)		92	258-244-500	SCREW & L/WASHER	2
40	94-241	GASKET-Breaker Pts. Cover	1	93	258-198-500	SCREW & L/WASHER	2
41	94-38-990	GASKET-Cylinder Head	1	94	258-279-500	SCREW & L/WASHER	1
42	94-81	GASKET-Dipstick Ass'y	1	95	258-297-500	SCREW & L/WASHER	1
43	94-31	GASKET-Asbestos(Carb. to Blk.)	1	96	258-880-500	SCREW & L/WASHER-Type A & B	4
44	94-92-990	GASKET-Spark Plug	1		258-241-500	SCREW & L/WASHER-Type C & D	4
45	94-101	GASKET-Valve Chamber Cover	2	97	258-232-500	SCREW & L/WASHER	2
46	94-620	GASKET-Fl. Tk. Cap	1	97A	258-133	SCREW-Gov. Bracket	1
47	94-13	GASKET-Air Horn to Carb. -Type A, B, C	1	97B	258-936-500	SCREW & L/WASHER ASS'Y	1
	94-458	GASKET-Type D	1	98	94-163-990	SEAL-Oil (Bearing Plate)	1
47A	94-88	GASKET-"O" Ring Air Cleaner	1	99	94-162-990	SEAL-Oil (Cylinder Block)	1
		Type A, B, C		100	267-5-500	SPARK PLUG & GASKET ASS'Y	1
47B	94-593	GASKET KIT-Engine Overhaul	1	101	263-10	SPRING-Breaker Box Cover	1
48	122-2	HEAD-Cylinder	1	102	263-40	SPRING-Governor	1
49	259-155-500	HOUSING-Blower	1	102A	263-45	SPRING-Back Lash	1
50	20-23	HOUSING ASS'Y-Gov. Shaft Brng.	1	103	263-92	SPRING-Valve	2
50A	910-32	HORN-Air Carb. -Type A, B, C	1	104	265-28-500	STARTER ASS'Y-Recoil-Type A & B	1
50B	136-16	INSERT-Valve Seat			265-280-500	STARTER ASS'Y-Recoil-Type C & D	1
	136-17	INSERT-Valve Seat Stellite		105	26-161	STRAP-Fuel Tank Mounting	2
51	148-4	KEY-Flywheel	1				

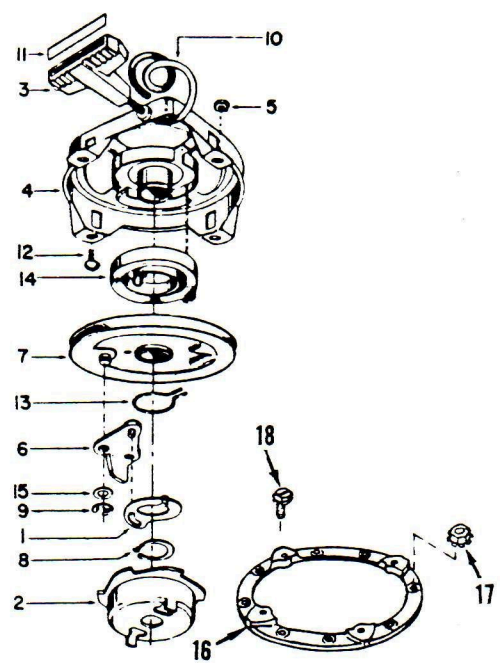
Ref. No.	Part No.	Description	Qty.
106	24-12	STUD-Valve Chamber Cover	1
107	24-13	STUD-Carb. Mounting	2
109	277-61-500	TANK ASS'Y-Fuel-Type A, B, C	1
	277-535	TANK ASS'Y-Fuel-Type D	1
110	278-1	TAPPET-Valve	2
111	307-230	TERMINAL-Jam. Breaker Pts.	1
112	291-1-990	VALVE-Exhaust (Std.)	1
	292-9-990	VALVE-Exhaust (.010)	1
	292-1	VALVE-Exhaust (9/32")	1
113	291-3-990	VALVE-Intake (Std.)	1
	292-9-990	VALVE-Intake (.010)	1
	292-3	VALVE-Intake (9/32")	1

Ref. No.	Part No.	Description	Qty.
114	293-37	VALVE-Fl. Shut-Off-Type A, B, C	1
	293-211	VALVE-Fl. Shut-Off-Type D	1
115	304-90	WASHER-"C" Valve Keeper	2
116	304-125	WASHER-Gov. Arm Adj.	1
117	304-622	WASHER-Lock (Starter Cup)	1
	304-132	WASHER-Flat-Type C & D	1
118	304-25	WASHER-Lock (Base to Block)	2
119	109-15-500	WEIGHT ASS'Y-Gov. Yoke	1
120	304-290	WASHER-Terminal Cond. Lead	1
121	304-298	WASHER-Valve Cover	1
122	304-134	WASHER-Bearing Plate	4

RECOIL STARTER 265-280-500 Type C & D



RECOIL STARTER 265-28-500 Type A & B



Ref. No.	Part No.	Description	Qty.
1	265-277	CUP-Starter	1
2	157-505	DOG-Starter	1
3	121-6-500	HANDLE-Starting	1
4	124-210-500	HOUSING ASS'Y	1
5	219-186-500	PULLEY ASS'Y	1
6	136-141	REINFORCEMENT	1
7	232-213	RETAINER-Dog	1
*8	246-7	ROPE	1
9	258-1103	SCREW	1
10	263-456	SPRING-Brake	1
11	265-278-500	SPRING & CUP ASS'Y	1
12	263-459	SPRING-Dog	1
13	900-162	ADAPTOR-Ring	1
14	183-25-500	NUT-Recoil Ring	4
15	258-830-500	SCREW-Recoil To Adaptor	4

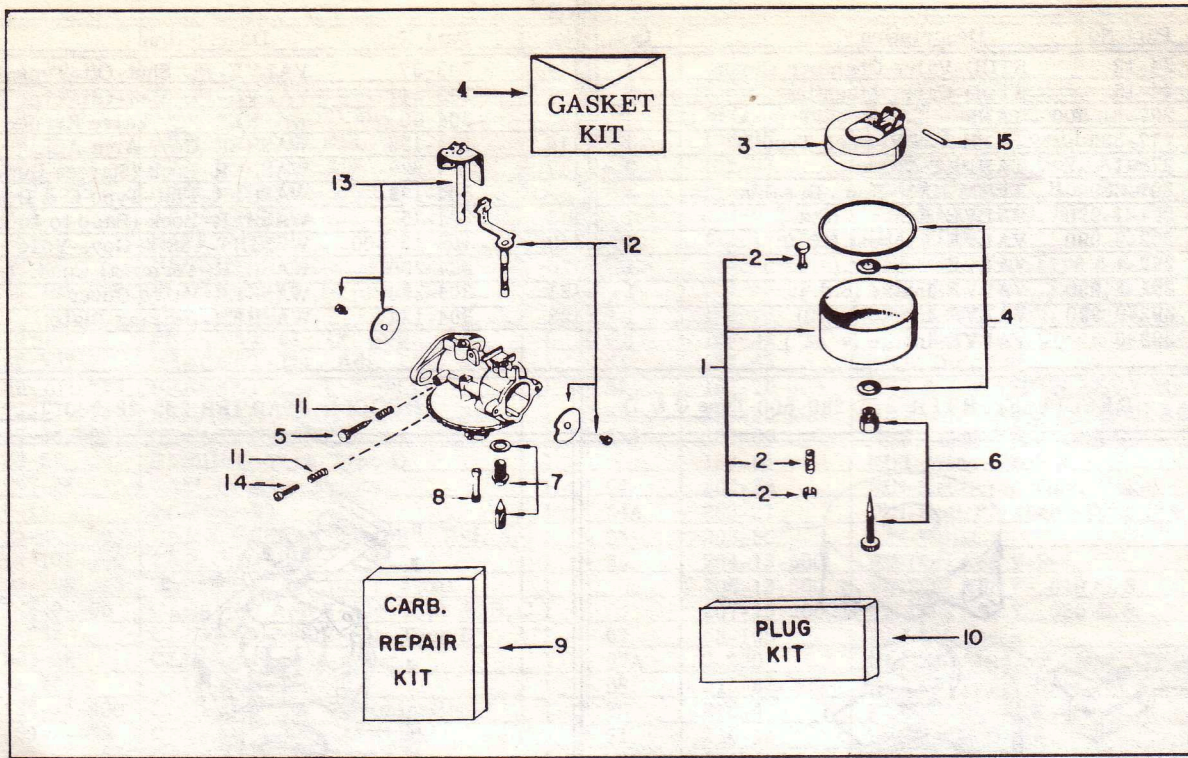
Ref. No.	Part No.	Description	Qty.
1	157-2	ACTUATOR	1
2	265-10	CUP-Starter	1
3	121-6-500	HANDLE	1
4	124-6-500	HOUSING-Incl. Recoil Spring	1
5	183-25-500	NUT & L'W ASS'Y	4
6	157-129-500	PAWL & PIN ASS'Y	1
7	219-28-500	PULLEY ASS'Y	1
8	232-147	RING-Retaining	1
9	232-35	RING-Retaining	1
10	246-7	ROPE	1
11	136-2	INSERT-Handle	1
12	258-191	SCREW-Pan Head	4
13	263-133	SPRING-Actuator	1
14	263-79	SPRING-Recoil	1
15	304-320	WASHER	1
16	900-162	ADAPTOR-Ring	1
17	183-25-500	NUT-Recoil Ring	4
18	258-880-500	SCREW-Recoil to Adaptor	4

*Required Length Rope Can Be Cut From Bulk 150" Roll
Part No. 246-38

SERVICE INFORMATION 494-0101-000 SERIES

Bore	2-3/8"
Stroke	1-7/8"
Cubic Inch Displacement	8.3
Spark Plug Gap	.025 to .028
Type of Carburetion	Float
Point Setting	.018 to .021

Oil Capacity	1-1/4 Pints
RPM-Horsepower Rating	3-1/2 @ 3600
Block Construction	Cast Iron
Bearing-Flywheel End	Bronze
Bearing-PTO End	Bronze or Ball
Valve Lash Setting	.009 to .011



FLOAT TYPE CARBURETORS

39-198-990, 39-200-990, 39-212-990 39-758-990, 39-797-500			39-198-990	39-200-990	39-212-990	39-758-990	39-797-500
Ref. No.	Part No.	Description					
1	25-16-500	BOWL & DRAIN ASS'Y	1	1	1		
	25-41-500	BOWL & DRAIN ASS'Y					1
2	39-909	DRAIN ASSEMBLY	1	1	1		1
3	82-2-500	FLOAT & LEVER ASS'Y	1	1			
	82-22-500	FLOAT & LEVER ASS'Y					1
4	*39-928	GASKET KIT	1	1	1		1
5	*181-2	NEEDLE-Idle Adj.	1	1	1		1
	181-80	NEEDLE-Idle Adj.				1	
6	*181-5-500	NEEDLE-Power Adj.	1	1	1		1
	181-82	NEEDLE-Power Adj.				1	
7	*293-30-500	NEEDLE & SEAT INLET	1	1			1
	*293-29-500	NEEDLE & SEAT INLET			1		
8	**182-37	NOZZLE	1	1	1		1
9	39-910	REPAIR KIT	1	1			1
	*39-911	REPAIR KIT			1		
10	39-938	PLUG KIT	1	1	1		1
11	263-82	SPRING-Idle & Thr. Stop Screw	2	2	2	2	2
	263-326	SPRING-Power N'dle (Not Illus.)				1	
12	6-450	CHOKE SHAFT KIT	1	1			
	6-490	CHOKE SHAFT KIT					1
13	6-455	THROTTLE SHAFT KIT	1	1	1	1	
	6-491	THROTTLE SHAFT KIT					1
14	258-60	SCREW-Throttle Stop	1	1	1	1	1
15	*6-195	SHAFT-Float Hinge	1	1	1		1

NOTE: Carburetor 39-212-990 uses 82-6-500 Float & Lever Ass'y.

* Indicates Parts In Repair Kit

** If Original Main Nozzle Was Removed Replace With Service Nozzle Only.

Clinton MODEL VARIATIONS

494-0101-000

SECTION II DIVISION 1962
494-0101-000
MODEL VARIATIONS
ISSUED FEBRUARY 1963
REVISED MAY 1974

The adaptation of Clinton Engines to a wide variety of uses, results in what is known as Model Variations. Following is a list of Models produced to date. Opposite each Engine Model listed are the Part Numbers required in addition to or in place of standard parts. Refer to Basic Parts List for parts not listed in the Model Variations. For replacement engine to fit special applications, external part changes may be required.

UNITS MARKED WITH A () INDICATES CRANKSHAFT CHANGE.
See Page C of this Manual on "How to Identify Your Clinton Engine."

MODELS	CRANKSHAFT Ref. to Sec. IV Div. B	NOTES	REPL. ENGINE #	MODELS	CRANKSHAFT Ref. to Sec. IV Div. B	NOTES	REPL. ENGINE #
494-0101-001	46-77	61	(21444)	494-1101-053	46-609	3, 4, 6	21522
494-0121-002	46-511	1	Note 62	494-1301-054	46-808	2, 6, 23, 53	Note 62
494-0141-003	46-512	1	Note 62	494-1301-055	46-506	2, 6, 12, 13, 22, 53	21616
494-0161-004	46-509	1	21449	494-1301-056	46-506	2, 6, 12, 13, 22, 53	21616
494-0301-005	46-808	2, 53	21453	494-0161-057	46-509	1, 12, 21, 22	21449
494-0301-006	46-75	2, 53, 61	21453	494-0101-058	46-606	11, 61	(21444)
494-0301-007	46-69	2, 53	21455	494-1301-059	46-221	2, 6, 53	21454
494-0301-008	46-221	2, 53	21454	494-0301-060	46-808	2, 53	21453
494-0101-009	46-609	3, 4, 5	21444	494-1301-061	46-808	2, 6, 53	21617
494-1101-010	46-66	6, 7, 54, 61	(21471)	494-1301-062	46-272	2, 6, 23, 26, 53	Note 62
494-0101-011	46-66	7, 54, 61	(21471)	494-1301-063	46-75	2, 6, 23, 53	Note 62
494-0101-012	46-609	3, 4, 5	21444	494-1301-064	46-808	2, 4, 6, 53	21617
494-0301-013	46-808	2, 8, 9, 10, 11, 12, 13, 53	21560	494-1101-065	46-609	6, 12, 13	21522
494-0161-014	46-509	1, 7, 54	21449	494-1161-066	46-509	1, 6, 23	Note 62
494-0101-015	46-609	3, 4, 14	21444	494-1301-067	46-808	2, 6, 12, 13, 22, 53	21617
494-0301-016	46-808	3, 4, 15, 2, 16, 17, 18, 19, 56	21453	494-1301-068	46-270	2, 6, 12, 13, 22, 53, 61	(21617)
494-0101-017	46-609	3, 12, 20	21444	494-1301-069	46-69	2, 6, 12, 13, 22, 53	21455
494-0101-018	46-609	3, 4	21444	494-1301-070	46-808	2, 4, 5, 6, 8, 27, 28, 53	21617
494-0301-019	46-808	2, 3, 4, 5, 11, 12, 53	21453	494-0101-071	46-609	4	21444
494-1101-020	46-609	6, 54	21571	494-1101-072	46-609	4, 6, 12	21522
494-1101-021	46-275	4, 6, 12	21441	494-0101-073	46-609	4	21453
494-1101-022	46-609	4, 6, 12	21522	494-1301-074	46-808	2, 6, 12, 13, 22, 53	21617
494-0161-023	46-509	1, 12, 21, 22	21449	494-1301-075	46-808	2, 6, 23, 53	Note 62
494-0301-024	46-808	2, 3, 4, 12, 21, 53	21453	494-0101-076	46-609	4, 12, 20, 29	21444
494-0101-025	46-609	4, 54	21571	494-1101-077	46-609	6, 23	Note 62
494-1301-026	46-221	2, 6, 12, 21, 53	21454	494-1101-078	46-609	6	21522
494-0301-027	46-221	2, 12, 21, 53	21454	494-1301-079	46-808	2, 6, 53	21617
494-0101-028	46-609	7, 12, 17	21444	494-0301-080	46-221	2, 18, 53	21454
494-1301-029	46-506	2, 6, 12, 53	21616	494-1101-081	46-609	6	21522
494-0101-030	46-609	12	21444	494-0101-082	46-609	4, 9, 29	21444
494-0301-031	46-808	2, 12, 53	21453	494-0301-083	46-808	2, 4, 12, 53	21453
494-1301-032	46-75	2, 6, 53	21617	494-0301-084	46-270	2, 12, 53, 61	(21453)
494-0301-033	46-808	2, 53	21453	494-0301-085	46-220	2, 12, 53	21452
494-0301-034	46-808	2, 4, 23, 53	Note 62	494-0301-086	46-221	2, 12, 21, 53	21454
494-1301-035	46-808	2, 4, 6, 53	21617	494-0301-087	46-69	2, 12, 53	21455
494-0101-036	46-609	24, 32	21444	494-0301-088	46-272	2, 12, 53, 61	(21453)
494-0101-037	46-609	10, 12	21444	494-0301-089	46-273	2, 12, 53, 61	(21453)
494-0301-038	46-808	2, 4, 53	21453	494-0101-090	46-275	12	21441
494-1301-039	46-808	2, 6, 53	21617	494-1301-091	46-69	2, 6, 53	21455
494-0301-040	46-506	2, 4, 12, 53	21450	494-1101-092	46-609	6	21522
494-0101-041	46-609	8	21444	494-1161-093	46-509	1, 6	21449
494-1101-042	46-609	6, 9, 54	21571	494-0161-094	46-509	1, 4, 30	21449
494-0101-043	46-609	9, 54	21571	494-0301-095	46-69	2, 12, 22, 53	21455
494-1101-044	46-609	6	21522	494-0101-096	46-609	4, 29	21444
494-1161-045	46-509	1, 6, 12, 25	21449	494-0101-097	46-609	4	21444
494-1301-046	46-69	2, 6, 12, 21, 22, 25, 56	21455	494-1301-098	46-808	2, 6, 12, 13, 22, 53	21617
494-1161-047	46-509	1, 6	21449	494-1161-099	46-509	1, 4, 6, 12, 31, 32, 33, 34, 35	21449
494-0101-048	STD. ENGINE		21444				
494-1141-049	46-512	1, 4, 6	Note 62	494-1301-100	46-808	2, 6, 10, 12, 53	21617
494-1301-050	46-506	2, 6, 12, 53	21616	494-1101-101	46-609	6, 57	21522
494-0101-051	46-609	4, 12	21444				
494-0161-052	46-509	1, 3, 4, 12, 21, 22	21449				

MODELS	CRANKSHAFT Ref. to Sec. IV Div. B	NOTES	REPL. ENGINE #	MODELS	CRANKSHAFT Ref. to Sec. IV Div. B	NOTES	REPL. ENGINE #
494-1301-102	46-808	2, 32, 36, 53	21617	494-1301-164	46-808	2, 6, 53	21617
494-0101-103	46-609	4, 9	21444	494-1301-165	46-808	2, 6, 23, 53	Note 62
494-0101-104	46-609	4, 9, 54	21571	494-1301-166	46-220	2, 6, 23, 53	Note 62
494-1101-105	46-609	4, 6, 9, 54	21571	494-0301-167	46-221	2, 18, 21, 53	21454
494-1301-106	46-272	2, 6, 23, 53	Note 62	494-1101-168	46-609	4, 6, 40, 41	21522
494-0301-107	46-808	2, 4, 12, 53	21453	494-1301-169	46-808	2, 4, 6, 12, 41, 53	21617
494-0101-108	46-609	4, 9, 11	21444	494-0301-170	46-808	2, 4, 40, 41, 48, 53	21444
494-0301-109	46-808	2, 4, 53, 54	21453	494-1301-171	46-220	2, 6, 53	21452
494-1161-110	46-509	1, 6, 7, 25, 58	21449	494-1301-172	46-220	2, 6, 23, 53	Note 62
494-1301-111	46-220	2, 6, 7, 25, 56	21452	494-1161-173	46-509	1, 23	21449
494-1121-112	46-511	1, 6, 54	Note 62	494-0101-174	46-66	61	(21444)
494-1361-113	46-509	1, 6, 8, 12, 13	21449	494-0101-175	STD. ENGINE		21444
494-0301-114	46-808	2, 53	21560	494-1301-176	46-808	2, 4, 6, 40, 41 42, 53.	21617
494-1301-115	46-220	2, 6, 8, 12, 13, 37, 53	21452	494-0101-177	46-609	17, 24, 45, 58	Note 62
494-0101-116	46-609	3, 12	21444	494-1301-178	46-808	2, 6, 40, 41, 42, 53	21617
494-1301-117	46-808	2, 6, 53	21560	494-0101-179	46-609	7, 9, 51, 54	21622
494-1301-118	46-808	2, 6, 53	21560	494-0101-180	46-609	4, 50, 54	21444
494-1301-119	46-808	2, 4, 6, 53	21560	494-0301-181	46-808	2, 4, 12, 53	21453
494-0161-120	46-509	1, 3, 4, 12, 21, 37	21449	494-0301-182	46-221	2, 7, 21	21454
494-1301-121	46-506	2, 3, 4, 6, 53	21616	494-1301-183	46-808	2, 53	21617
494-0121-122	46-511	1	Note 62	494-0301-184	46-506	2, 8, 18, 53	21450
494-0301-123	46-808	2, 12, 38, 53	21560	494-1161-185	46-509	1, 6	21449
494-1161-124	46-509	1, 6, 37	21449	494-1121-186	46-511	1, 6, 23	Note 62
494-1301-125	46-808	2, 6, 12, 37, 53	21560	494-1301-187	46-808	2, 6, 47, 53	21617
494-0161-126	46-509	1, 4	21449	494-1121-188	46-511	1, 6, 47	Note 62
494-1101-127	46-275	4, 6	21441	494-1301-189	46-808	2, 6, 23, 47 53	Note 62
494-1161-128	46-509	1, 6, 7, 8, 12, 13, 25, 34, 39, 58	21449	494-1121-190	46-511	1, 6, 23, 47	Note 62
494-1301-129	46-75	2, 6, 53	21609	494-1301-191	46-808	2, 6, 47, 53	21617
494-0101-130	46-609	4, 40, 41, 42	21444	494-1301-192	46-808	2, 6, 23, 47 53	Note 62
494-0301-131	46-220	2, 53	21452	494-0301-193	46-808	2, 4, 13, 15 19, 25, 56, 63	Note 62
494-1301-132	46-69	2, 6, 25	21455	494-0161-194	46-509	1	21449
494-1101-133	46-609	6, 18, 24, 43, 54	21522	494-1301-195	46-75	2, 23, 53, 64, 66	Note 62
494-0161-134	46-509	1, 12	21449	494-1301-196	46-220	2, 23, 29, 53, 64, 66	Note 62
494-0161-135	46-501	1	21449	494-1301-197	46-808	2, 64, 65, 67	21560
494-0101-136	46-609	23	21444	494-0101-198	46-609	4, 9, 29, 51	21444
494-0101-137	46-609	8, 12, 41	21444	494-1301-199	46-808	2, 53, 64, 66	21617
494-0301-138	46-72	2, 8, 11, 18, 44	Note 62	494-1301-200	46-221	2, 6, 12, 18 21, 53	21454
494-0301-139	46-808	2, 3, 4, 8, 11, 12, 53	21560	494-1301-201	46-808	2, 64, 65, 67	21560
494-0301-140	46-75	2, 23, 53	Note 62	494-1141-202	46-512	1, 29, 64, 66	Note 62
494-0301-141	46-221	2, 18, 53	21454	494-1301-203	46-808	2, 53, 64, 66	21617
494-1301-142	46-75	2, 6, 23, 53	Note 62	494-1301-204	46-808	2, 23, 53, 64, 66	Note 62
494-1301-143	46-69	2, 4, 6, 40, 41, 42, 53	21455	494-1301-205	46-221	2, 6, 17, 18 21, 45, 56	Note 62
494-0101-144	STD. ENGINE		21444	494-0101-206	46-609	4, 5, 7, 9, 51, 54	21571
494-0161-145	46-509	1, 3, 4	21449	494-1101-207	46-609	64, 67, 68	21522
494-1301-146	46-221	2, 6, 12, 17, 21, 45, 56	Note 62	494-0301-208	46-808	2, 18, 25, 56, 69	21453
494-1101-147	46-66	6, 61	(21522)	494-0301-209	46-221	2, 18, 65	21454
494-1121-148	46-511	1, 6	Note 62	494-0301-210	46-285	2, 53, 61	(21453)
494-1301-149	46-808	2, 4, 6, 40, 41, 42, 53	21560	494-1301-211	46-808	2, 23, 64, 65, 66	Note 62
494-0101-150	46-609	4, 46	21444	494-0301-212	46-69	2, 53	21455
494-1121-151	46-511	1, 6	Note 62	494-1301-213	46-221	2, 12, 18, 21, 53, 64, 66	21454
494-0301-152	46-75	2, 12, 53	21609				
494-1161-153	46-509	1, 2	21449				
494-0301-154	46-808	2, 23, 53	Note 62				
494-0301-155	46-506	2, 4, 12, 53	21450				
494-1301-156	46-808	2, 3, 4, 6, 12, 41, 47, 53	21560				
494-1301-157	46-808	2, 4, 6, 8, 53	21560				
494-0101-158	46-275	4	21441				
494-1301-159	46-808	2, 6, 23, 53	Note 62				
494-0161-160	46-509	1, 3, 4	21449				
494-0101-161	46-609	4, 11, 29	21444				
494-0301-162	46-221	2, 17, 18, 56	21454				
494-1301-163	46-220	2, 6, 53	21452				

MODELS	CRANKSHAFT Ref. to Sec. IV Div. B	NOTES	REPL. ENGINE #	MODELS	CRANKSHAFT Ref. to Sec. IV Div. B	NOTES	REPL. ENGINE #
494-0161-214	46-509	1	21449	494-1161-237	46-509	1, 4, 6, 40, 41, 42	Note 62
494-1301-215	46-69	2, 40, 41, 42, 53, 64, 66	21455	494-0161-238	46-509	1, 4, 7, 11	21449
494-1301-216	46-220	2, 64, 65, 67	21452	494-0301-239	46-69	2, 11, 18, 22, 53	21455
494-1101-217	46-609	64, 66	21522	494-0301-240	46-808	2, 23, 65	Note 62
494-1301-218	46-220	2, 64, 65, 66	21452	494-0301-241	46-221	2, 9, 12, 21, 25, 56	21454
494-1301-219	46-808	2, 53, 64, 66	21560	494-0301-242	46-808	2, 12, 13, 37, 53	21453
494-1301-220	46-808	2, 53, 64, 67	21560	494-0101-243	STD. ENGINE		21444
494-0301-221	46-808	2, 12, 17, 45, 56	Note 62	494-0301-244	46-808	2, 4, 40, 42, 53	21453
494-1301-222	46-808	2, 36, 65	21560	494-1101-245	46-609	6, 12, 13	21522
494-1301-223	46-808	2, 23, 53, 64, 66	Note 62	494-0101-246	46-609	4, 9, 51	21622
494-1301-224	46-220	2, 29, 53, 64, 66	21452	494-1301-247	46-221	2, 65, 70	Note 62
494-0301-225	46-808	2, 53	21453	494-1301-248	46-221	2, 6, 23, 65	Note 62
494-1141-226	46-512	1, 29, 41, 64, 66	Note 62	494-1101-249	46-609	6, 12	21522
494-0301-227	46-221	2, 18, 21, 47, 53	21454	494-1301-250	46-75	2, 6, 53	21609
494-1301-228	46-808	2, 40, 42, 64, 65, 67	21629	494-0301-251	46-808	2, 53	21453
494-1301-229	46-75	2, 64, 65, 66	21609	494-0301-252	46-808	2, 12, 23, 53	21453
494-0301-230	46-808	2, 18, 25, 56, 69	21453	494-1301-253	46-808	2, 6, 53, 71	21617
494-1301-231	46-69	2, 53, 64, 66	21455	494-0101-254	46-283	12	(21444)
494-0101-232	46-609	54	21571	494-0301-255	46-221	2, 53	21453
494-0121-233	46-511	1, 23	Note 62	494-1301-256	46-75	2, 6, 23, 53	Note 62
494-0141-234	46-512	1, 23	Note 62	494-1101-257	46-609	6	21571
494-1301-235	46-808	2, 64, 65, 66	21629	494-0301-258	46-75	2, 53	21617
494-0141-236	46-512	1, 4, 40, 41, 42	Note 62	494-0301-259	46-75	2, 23, 53	Note 62
				494-0301-260	46-221	11, 18, 21, 25, 56	Note 62
				494-1301-261	46-808	2, 6, 11, 72, 70, 73, 74, 75	Note 62
				494-1161-262	46-509	1, 12, 76	Note 62
				494-0101-263	46-609	50, 77	Note 62
				494-0101-264	46-609	4, 78, 79	Note 62

494-0101-000 SERIES NOTES

- Note 1 Use 94-163-990 Oil Seal (Block). Refer to Sec. III, Div. C, Page 1, for Gear Reducer exploded view and parts list.
- Note 2 Use 20-4 Bearing (Ball), (2) 258-251-500 Screw & L'Washer (Bearing Hold-Down) and 94-165-990 Seal (Oil).
- Note 3 Use 307-31-500 Cable Ass'y (Remote Control). Cable supplied in 72' length only, cut to length required.
- Note 4 Refer to Sec. III, Div. D for sketch on Remote Control Hook-up, use 157-123-500 Lever (Remote Control), 232-24 Retainer, 203-208 Pin (Pivot), 81-3 Clamp Cable, 258-171 Screw and 183-25-500 Nut.
- Note 5 Use 170-18-500 Muffler and 183-37 Nut (Lock).
- Note 6 Use 259-104-500 Housing Ass'y (Blower), 219-34-500 Pulley (Starting), 304-132 Washer (Flywheel), and 246-13-500 Rope Ass'y (Starting).
- Note 7 Use 2-9-500 Cleaner Ass'y (Air), 304-136 Washer (Stud to Air Cleaner), 258-72 Screw (Air Cleaner to Air Horn), 304-134 Washer (Flat), 304-28 Washer (Lock).
- Note 8 Use 307-121-500 Wire Ass'y (Shorting), 183-26 Nut, 70-7 Grommet and 258-936-500 Screw & L'Washer Ass'y.
- Note 9 Use 69-63 Nipple (Muffler) and 170-37-500 Muffler.
- Note 10 Use (2) 81-3 Clamp, 304-39 Spacer, and 258-243-500 Screw.
- Note 11 Use 26-140 Bracket (Blower Housing), 259-133-500 Housing Ass'y (Blower), 26-62-500 Strap & Bracket (Tank Mounting), 26-63-500 Strap & Bracket, 277-382-500 Tank Ass'y (Fuel), 293-37 Valve (Fuel Shut-Off), 258-244-500 Screw & L'Washer, 45-95-500 Cap Ass'y (Fuel), 304-73 Spacer (Straps to Block)(2), and 258-454-500 Screw & L'Washer (2).
- Note 12 Use 69-48 Horn (Air), (2) 69-69 Mandrel (Breather Tube) and 158-74 Tube (Breather).
- Note 13 Use 45-68-500 Cover (Spark Plug-Shorting).
- Note 14 Use 2-18-500 Plate (Air Cleaner), 2-33 Element, 45-6 Cover (Air Cleaner), and 258-70 Screw (Air Cleaner to Air Horn).
- Note 15 Use 26-140 Bracket (Blower Housing), and 258-279-500 Screw & L'Washer.
- Note 16 Clinton does not supply the Fuel Tank for this Unit.
- Note 17 Use 291-2-990 Valve (Exhaust-Stellite). Use standard Exhaust Valve on intake side.
- Note 18 This unit requires commercial Ignition Shielding, refer to Sec. III, Div. Q.
- Note 19 Use 2-144 Body (Air Cleaner), 94-13 Gasket (Air Cleaner), 304-562 Washer (Air Cleaner) (2), 258-902 Screw (Air Cleaner to Carb.) (2), 2-175-990 Element, 45-337 Cover (Air Cleaner).
- Note 20 Use 216-27 Plug (Oil Drain).
- Note 21 Use 124-1-500 Housing Ass'y (Governor Bearing), and 304-71 Spacer.
- Note 22 Use 293-170 Valve (Fuel Shut-Off), 69-287 Connector (Shut-Off Valve), 69-291 Elbow to Carb., 158-390 Line (Fuel), and (2) 183-244 Nut & Ferrule.

- Note 23 Use 277-80-500 Tank Ass'y (Fuel), 69-25 Elbow, 69-59 Nipple (Pipe), 293-10 Valve (3-Way), 69-24 Elbow (Hose Connector), 69-5 Connector (Hose), 122-3 Head, (6) 258-163 Screw Head to Block. Use 158-25 Fuel Line (Valve To Tank) (Valve to Carb.).
- Note 24 Use 267-27-500 Spark Plug (Resistor).
- Note 25 Use 263-30 Spring (Valve-Exhaust), 291-19-500 Roto-Cap Ass'y, 291-18-990 Valve (Exhaust-Stellite), and 203-58 Pin (Valve). Use standard Exhaust Valve on intake side.
- Note 26 Use 157-36 Lever (Speed Adjusting) and 258-225-500 Screw & L'Washer.
- Note 27 Clinton does not supply Carburetor for this Unit.
- Note 28 Clinton does not supply Air Cleaner for this Unit.
- Note 29 Use 69-16 Elbow (Muffler), and 183-37 Nut (Lock).
- Note 30 Use 158-407 Tube (Breather), and 69-269 Connector (Tube to Elbow).
- Note 31 Use 304-559 Spacer (Remote Control Cable Clamp), 81-3 Clamp (Remote Control Cable), and 258-171 Screw (Clamp & Spacer to Block).
- Note 32 Clinton does not supply the Muffler for this Unit.
- Note 33 Use 69-18 Elbow (Muffler), and 183-37 Nut (Lock).
- Note 34 Use 277-59-500 Tank Ass'y (Fuel), (2) 26-162 Strap, and 45-95-500 Cap Ass'y (Fuel).
- Note 35 Use 2-165-500 Cleaner Assembly (Air).
- Note 36 Use 26-140 Bracket (Blower Housing), 259-144-500 Housing Ass'y (Blower), 26-63-500 Strap Ass'y, 26-62-500 Strap Ass'y, 277-382-500 Tank Ass'y (Fuel), 293-37 Valve (Fuel Shut-Off), 45-95-500 Cap Ass'y (Fuel), (2) 304-73 Spacer, (2) 258-454-500 Screw & L'Washer, 219-34-500 Pulley (Starting), 304-132 Washer (Flywheel), and 246-13-500 Rope Ass'y (Starter).
- Note 37 Use 158-390 Line Fuel (2), 183-244 Nut, 69-291 Elbow, 69-287 Connector, 293-170 Valve Fuel Shut-Off.
- Note 38 Use 157-414-500 Kit Remote Throttle.
- Note 39 Use 45-95-500 Cap Fuel.
- Note 40 Use 2-215-500 Air Cleaner, 2-174 Element, (2) 94-13 Gasket, (2) 258-902 Screws, 183-266 Nut Wing.
- Note 41 Use 233-136-500 Chrome Re-Ring Set, see Service Bulletin No. 4.
- Note 42 Use 69-69 Mandrel, 158-74 Tube Breather, 69-269 Connector, 304-640 Spacer (Air Cleaner).
- Note 43 Use 277-67-500 Tank Ass'y, 45-95-500 Cap Fuel, (2) 26-162 Strap.
- Note 44 Use 39-212-990 Carburetor, 69-5 Connector, 94-6 Gasket, 220-23-500 Pump Fuel, (2) 258-232-500 Screw & L'Washer Ass'y, 69-24 Connector, 158-357 Line Fuel, 69-59 Connector, 69-19 Elbow, 293-32-500 Valve, (2) 258-224-500 Screw & L'Washer Ass'y.
- Note 45 Use 39-758-990 Carburetor, 26-87 Bracket, 231-2 Regulator, (4) 258-41-500 Screw & L'Washer Ass'y, 69-120 Reducer, 69-5 Connector, 231-4 Regulator, 69-121 Reducer, 158-25 Line Fuel, 258-279-500 Screw & L'Washer Ass'y, 25-36-500 Filter L. P. G.
- Note 46 Use 45-404-500 Cap Fuel Tank, 259-694-500 Housing, 258-965 Screw, (2) 258-160 Screw, 259-691-500 Shroud Ass'y Snow Shield, (2) 258-42 Screw & L'Washer Ass'y, 24-96 Stud Spacer, 24-97 Stud Spacer, (2) 183-29-500 Nut, (2) 304-26 Washer, 304-14 Washer, 26-602 Bracket, 258-718-500 Screw & L'Washer Ass'y, 81-13 Clamp, 258-936-500 Screw & L'Washer Ass'y.
- Note 47 Use 2-172-500 Air Cleaner Ass'y, 2-173 Base, 2-174 Element, 45-408-500 Cover.
- Note 48 Use 39-200-990 Carburetor, 158-74 Tube Breather, 69-69 Mandrel, 69-269 Connector Breather Tube.
- Note 50 Use 259-750-500 Housing Note: 51 Use 259-750-500 Housing, 265-224-500 Recoil Starter.
- Note 53 Use 22-122 Block Cylinder. Note: 54 Use 18-6 Base. Note: 56 Use 22-127 Block Cylinder.
- Note 57 Use 22-121 Block Cylinder. Note: 58 Use 22-129-500 Block Cylinder.
- Note 59 Use 22-128 Block Cylinder. Note: 60 Use 259-681-500 Housing Blower.
- Note 61 Use Crankshaft listed Replacement Engine listed with () indicates crankshaft change.
- Note 62 Order Replacement Engine By complete model number from source of supply.
- Note 63 Use 39-812-500 Carburetor, 94-515 Gasket (Carb. to Manifold), 169-90-500 Manifold, (2) 24-11 Studs Manifold, (2) 183-29-500 Nut & L'Washer, 158-74 Breather Tube, 69-269 Connector Breather Tube, 69-23 Elbow Breather Tube, 69-69 Mandrel Elbow Retaining, 900-340 Adaptor (Air Cleaner to Carb.), 159-147 Link (Governor Arm to Carb.).
- Note 64 Use 83-112-500 Flywheel, 203-21 Pin Drive (Flywheel), 219-172 Pulley (Starting), 304-622 Washer, 183-32 Nut (Flywheel), 246-40-500 Rope Ass'y (Starting).
- Note 65 Use 215-531-500 Bearing Plate, 22-838-500 Block Ass'y, 6-484 Camshaft, 215-526-500 Coil & Bracket Ass'y, 245-126-500 Push Rod Breaker Points, 135-5-500 Breaker Point, 135-272-500 Condenser, (2) 258-83 Screw (Condenser & Breaker Point), 304-527 Washer Flat, 304-380 Washer Lock, 45-440-500 Cover Ass'y (Breaker Points), (2) 258-1015 Screw (Breaker Cover), 158-449 Tube Spacer (Flywheel Key Positions) 45-66 Cover (Spark Plug).
- Note 66 Use 259-104-500 Housing Ass'y (Blower).
- Note 67 Same As Note: 11 except use 259-144-500 Housing Ass'y in place of 259-133-500.
- Note 68 Same As Note: 65 except use 22-842-500 Block Ass'y in place of 22-838-500.
- Note 69 Use 266-53 Switch (Shorting), 215-134 Plate (Switch Mounting), 183-21 Nut (Switch), 307-121-500 Wire Ass'y (Shorting), 183-26 Nut (Point Terminal).
- Note 70 Use 293-32-500 Valve-Fuel Shut Off.
- Note 71 Use 2-144 Body Air Cleaner, 2-223 Cup Air Cleaner, 2-225 Element, 45-337 Cover, 94-13 Gasket, 258-131 Screw.
- Note 72 Use 6-484-500 Camshaft, 215-526-500 Coil & Bracket Ass'y, 70-7 Grommet, 307-119-500 Wire, 258-81 Screw, 245-128 Rod, Push, 26-13 Bracket, 135-278 Condenser, 135-5-500 Breaker Points, 258-1069 Screw, 304-27 Spring, 304-377 Washer, 183-132 Nut, (2) 258-132-500 Screw, 45-13-500 Cover Ass'y 70-8 Grommet, (2) 258-958-500 Screw & L'Washer.
- Note 73 Use 22-859 Block Note: 74 Use 39-958-500 Carburetor. Note: 75 Use 45-402-500 Cover Ass'y Spark Plug.
- Note 76 Use 259-155 Housing Blower, 26-39 Bracket Tank, (2) 26-161 Strap Tank, 293-37 Valve Fuel Shut off, 277-61-500 Tank Ass'y, 45-424-500 Cap Fuel.
- Note 77 Use 265-263-500 Recoil
- Note 78 Use 2-230 Plate Air Cleaner, 26-784-500 Bracket, (2) 258-131 Screw, 2-233 Element, 45-499 Cover 183-65 Nut Wing.
- Note 79 Use 307-23-500 Cable & Handle Ass'y.