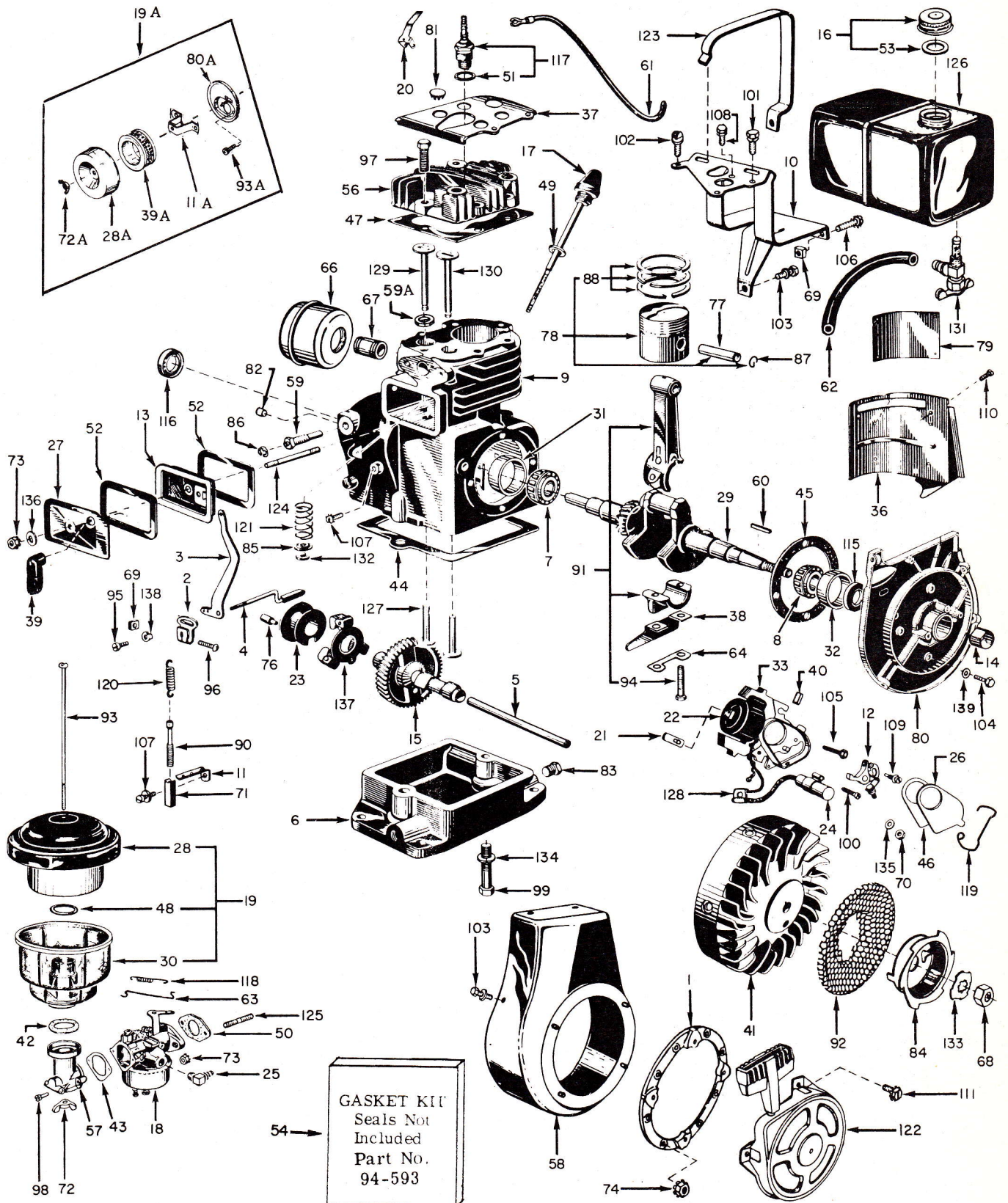




# BASIC PARTS LIST

## 498-0301-000

SECTION II DIVISION 1962  
ISSUED FEBRUARY 1963  
REVISED MAY 1974



**CLINTON ENGINES CORPORATION**

MAQUOKETA, IOWA

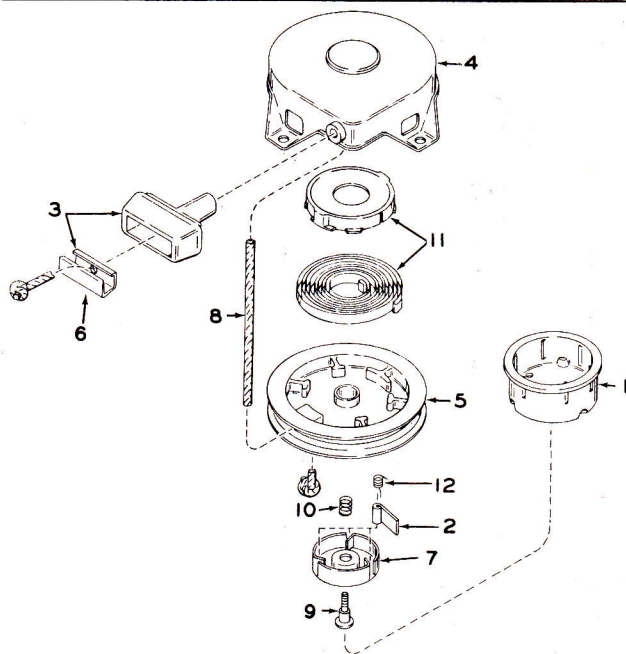
There are 3 Basic types of the 498-0301-000 covered by this Basic Parts List: Parts not used on all types are noted. Serial Number suffix "A" is referred to as Type A. NOTE: See Page C on "How to Identify Your Clinton Engine."

Ref No.	Part No.	Description	Qty.	Ref No.	Part No.	Description	Qty.
1	900-162	ADAPTOR-Recoil	1	60	148-4	KEY-Flywheel	1
2	107-4	ADJUSTER-Governor Arm	1	61	307-357-990	LEAD-High Tension	1
3	157-393	ARM-Governor	1	62	158-25	LINE-Fuel-Flexible 10 1/2" Long	1
4	6-370-500	ARM & WEIGHT ASS'Y-Gov.	1	63	159-37	LINK-Carb. to Gov. Arm	1
5	6-2	AXLE-Camshaft	1	64	148-10	LOCK-Connect. Rod Screw	1
6	18-4	BASE-Engine	1		268-6-500	MAGNETO ASS'Y-Incl. Nos. 12, 21, 22, 24, 26, 33, 40, 46, 70, 100, 109, 119, 128 & 135	1
7	20-12	BEARING-Cone (P. T. O. End)	1				
8	20-13	BEARING-Cone (Brng. Plt.)	1				
9	22-710-500	BLOCK ASS'Y-Cylinder	1	66	170-37-500	MUFFLER	1
10	26-39	BRACKET-Fuel Tk. Mounting	1	67	69-63	NIPPLE-Muffler to Block	1
11	26-557	BRACKET-Throttle Adjusting		68	183-68-990	NUT-Hex 1/2-30 (Starter Pulley)	1
11A	26-784-500	BRACKET-Air Cleaner Type C	1	69	183-53	NUT-1-Gov. Adj. Arm-2 Tk. Strap	3
12	135-7-500	BREAKER PTS. ASS'Y-Mag.	1	70	183-21	NUT-Term. Condenser Lead	1
13	260-13	BREATHER ASS'Y-Type A	1	71	183-63	NUT-Throttle Adjusting	1
	29-35-500	BREATHER ASS'Y-Type B	1	72	183-66	NUT-Wing (Air Cleaner Screw) A & B	1
14	157-28	CAM-Breaker Points	1	72A	183-65	NUT-Wing-Type C	1
15	6-12	CAMSHAFT	1	73	183-29-500	NUT & L'W-1 Valve Cover Stud, 2 Carb. to Block	3
16	45-424-500	CAP & GASKET ASS'Y-Fuel	1				
17	45-101-500	CAP-Oil Filler	1	74	183-25-500	NUT & L'W-Adapt. to Housing	4
18	39-200-990	CARBURETOR ASS'Y	1	76	203-38	PIN-Retaining (Gov. Yoke)	1
19	2-218-500	CLEANER ASS'Y-Air Type A & B	1	77	203-65	PIN-Wrist	1
19A	2-232	CLEANER ASS'Y-Type C	1	78	204-8-500	PISTON ASS'Y-Std.	1
20	266-28	CLIP-Ignition Shorting	1		206-8-500	PISTON ASS'Y-.010 O.S.	
21	81-20	CLIP-Coil Holding	1		207-8-500	PISTON ASS'Y-.020 O.S.	
22	135-13-990	COIL-Mag. (W/O Laminations)	1		208-8-500	PISTON ASS'Y-.030 O.S.	
23	109-3-500	COLLAR ASS'Y-Governor	1	79	58-471	PLATE-Name	1
24	135-29-990	CONDENSER-Magneto	1	80	215-516-500	PLATE-Bearing	1
25	69-24	CONNECTOR-Flex. Fuel Line	1	80A	2-230	PLATE-Air Cln. Mtg. Type C	1
26	45-15	COVER-Dust Mag. Breaker Pts.	1	81	216-3	PLUG-Button	3
27	45-80	COVER-Valve Chamber	1	82	216-4	PLUG-Camshaft Axle	1
28	45-33	COVER & ELEMENT-Air Type A & B	1	83	216-19	PLUG-Oil Drain	2
28A	45-499	COVER-Air Cleaner Type C	1	84	265-10	PULLEY-Starter	1
29	46-239	CRANKSHAFT	1	85	304-135	RETAINER-Valve Spring	2
30	2-218	CUP-Air Cleaner Type A & B	1	86	232-155	RING-Retaining (Gov. Shaft)	1
31	20-63	CUP-Bearing (Block)	1	87	232-41	RING-Retainer-Wrist Pin	2
32	20-62	CUP-Bearing (Bearing Plate)	1	88	233-113-500	RING SET-Std.	1
33	135-37-500	CORE & BREAKER BOX	1		233-137-500	CHROME RE-RING-Std.	
	58-461	DECAL-Arrowhead	1		235-122-500	RING SET-.010 O.S.	
36	259-35	DEFLECTOR-Air (Name Plate)	1		237-122-500	RING SET-.020 O.S.	
37	259-61-500	DEFLECTOR-Air	1		239-122-500	RING SET-.030 O.S.	
38	220-13	DISTRIBUTOR-Oil	1		237-137-500	CHROME RE-RING-.020 O.S.	
39	158-415	ELBOW-Breather	1	90	245-10	ROD-Throttle Adjusting	1
39A	2-233	ELEMENT-Air Cleaner Type C	1	91	245-62-500	ROD ASS'Y-Connecting	1
40	94-189	FELT-Lub., Cam Follower	1	92	257-31	SCREEN-Revolver	1
41	83-13-500	FLYWHEEL ASS'Y-W/Magnets	1	93	258-73	SCREW-Air Cleaner Type A & B	1
42	94-11	GASKET-Air Clnr. to Air Horn A & B	1	93A	258-131	SCREW-Type C	2
43	94-13	GASKET-Air Horn to Carb.	1	94	258-9	SCREW-Connecting Rod Cap	2
44	94-118	GASKET-Eng. Base to Block	1	95	258-936-500	SCREW-Governor Arm	1
45	94-25	GASKET-Brng. Plt Std. .015	1	96	258-196	SCREW-Governor Adj. Arm	1
	92-25	GASKET-Brng. Plt. .005		97	258-86	SCREW-Cylinder Head to Block	6
	93-25	GASKET-Brng. Plt. .010		98	258-105	SCREW-Air Horn to Carburetor	2
	95-25	GASKET-Brng. Plt. .020				Type A & B	
46	94-241	GASKET-Breaker Pt. Cover	1	99	258-173	SCREW-Base to Block	2
47	94-42	GASKET-Cylinder Head	1	100	258-299	SCREW-Condenser to Plate	1
48	94-89	GASKET-"O" Ring-Air Cleaner (Element to Cup) Type A & B	1	101	258-232-500	SCREW & L'W-Tank Bracket to Blower Housing to Deflector	2
49	94-81	GASKET-Oil Filler Cap	1	102	258-239-500	SCREW & L'W-Tk Brkt to Head	1
50	94-31	GASKET-Asbestos-Carb. to Blk.	1	103	258-280-500	SCREW & L'W-(Tk. Brkt. to Blk.) (4-Blw. Hsg. to Plt.)	5
51	94-92-990	GASKET-Spark Plug	1				
52	94-101	GASKET-Valve Chamber Cover (1-Type A, 2 Type B)	2	104	258-149-500	SCREW & L'W-Bring Plt. to Blk.	4
53	94-620	GASKET-Fuel Tank Cap	1	105	258-108-500	SCREW & L'W-Lam. to Brng. Plt.	2
54	94-593	GASKET KIT-Engine Overhaul	1	106	258-244-500	SCREW & L'W-Fuel Tank Straps	2
56	122-9	HEAD-Cylinder	1	107	258-198-500	SCREW & L'W-Speed Adj. Brkt.	2
57	69-306	HORN-Air-Type A & B	1	108	258-279-500	SCREW & L'W-Tk Brkt. To Head	1
58	259-155-500	HOUSING-Blower	1	109	258-297-500	SCREW & L'W-Pts. to Box	1
59	20-23	HOUSING ASS'Y-Gov. Shaft-Brng.	1	110	258-936-500	SCREW & L'W-Deflector to Head	2
59A	136-16	INSERT-Valve Seat (Std.)		111	258-880-500	SCREW & L'W-Recoil to Adaptor	4
	136-34-990	INSERT-Valve Seat (Stellite)		115	94-180-990	SEAL-Oil (Bearing Plate)	1
				116	94-165-990	SEAL-Oil (Cylinder Block)	1

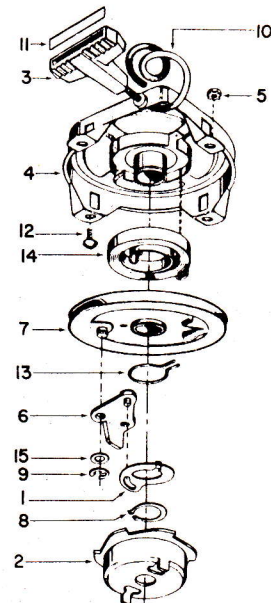
Ref. No.	Part No.	Description	Qty.
117	267-5-500	SPARK PLUG & GASKET ASS'Y	1
118	263-45	SPRING-Backlash, Governor	1
119	263-10	SPRING-Breaker Box Cover	1
120	263-40	SPRING-Governor	1
121	263-92	SPRING-Valve	2
122	265-28-500	STARTER ASS'Y-Recoil	1
123	26-161	STRAP-Fuel Tank Mounting	2
124	24-12	STUD-Valve Chamber Cover	1
125	24-13	STUD-Carburetor Mounting	2
126	277-61-500	TANK ASS'Y-Fuel	1
127	278-1	TAPPET-Valve	2
128	307-230	TERMINAL-Jam, Breaker Pts.	1
129	291-1-990	VALVE-Exhaust (Std.)	1
	292-9-990	VALVE-Exhaust (.010 O.S. Stem)	
	292-1	VALVE-Exhaust (.032 O.S. Stem)	
	291-2-990	VALVE-Ex. (Stellite Std. Stem)	
	292-14-990	VALVE-Ex. (Stlite. .010 O.S. Stem)	

Ref. No.	Part No.	Description	Qty.
	291-18-990	VALVE-Ex. (Stellite Rotator Std.)	
	292-10-990	VALVE-Ex. (Stellite Rotator .010)	
130	291-3-990	VALVE-Intake (Std.)	1
	292-13-990	VALVE-Intake (.010 O.S. Stem)	
	292-3	VALVE-Intake (.032 O.S. Stem)	
131	293-37	VALVE-Fuel Shut Off	1
132	304-90	WASHER-"C" Valve Keeper	2
133	304-5	WASHER-Starter Pulley	1
134	304-25	WASHER-Base to Block	2
135	304-290	WASHER-Term. Condenser Lead	1
136	304-298	WASHER-Valve Chamb. Cover	1
137	109-15-500	WEIGHT ASS'Y-Gov. Yoke	1
138	304-125	WASHER-Gov. Arm	1
139	304-134	WASHER-Bearing Plate	4
140	304-28	WASHER-Air Cleaner	1

RECOIL STARTER 265-276-500 & 265-279-500



RECOIL STARTER 265-28-500



Ref. No.	Part Number	Description	Qty.
1	265-277	CUP-Starter	1
2	157-505	DOG-Starter	3
3	121-6-500	HANDLE-Starting	1
4	124-210-500	HOUSING ASS'Y	1
5	219-185-500	PULLEY ASS'Y	1
6	136-2	REINFORCEMENT	1
7	232-211	RETAINER-Dog	1
* 8	246-7	ROPE	1
9	258-1103	SCREW	1
10	263-456	SPRING-Brake	1
11	265-278-500	SPRING & CUP ASS'Y	1
12	263-455	SPRING-Dog	3

\* Required Length Rope Can Be Cut From Bulk 150' Roll—  
Part No. 246-38

Ref. No.	Part Number	Description	Qty.
1	157-2	ACTUATOR-----	1
2	265-10	CUP-Starter -----	1
3	121-6	HANDLE -----	1
4	124-6-500	HOUSING-Incl. Recoil Spring ----	1
5	183-25-500	NUT & L'W ASS'Y-----	4
6	157-129-500	PAWL & PIN ASS'Y-----	1
7	219-28-500	PULLEY ASS'Y-----	1
8	232-147	RING-Retaining -----	1
9	232-35	RING-Retaining -----	1
10	246-7	ROPE -----	1
11	136-2	INSERT-Handle -----	1
12	258-191	SCREW-Pan Head -----	4
13	263-133	SPRING-Actuator-----	1
14	263-79	SPRING-Recoil-----	1
15	304-320	WASHER -----	1

SERVICE INFORMATION 498-0301-000 SERIES

Type of Carburetion	Float	Oil Capacity	1-1/4 Pints
Bore	2-15/32"	Bearing-Flywheel End	Tapered Roller
Stroke	2-1/8"	Bearing-PTO End	Tapered Roller
Spark Plug Gap	.025 to .028	Valve Lash Setting	.009 to .011
Cubic Inch Displacement	10.2	RPM-Horsepower Rating	4-1/2 @ 3600
Point Setting	.018 to .021	Block Construction	Cast Iron

CARBURETOR 39-200-990, 39-213-990, 39-817-500 & 39-758-990

Ref. No.	Part No.	Description	39-200-990	39-213-990	39-758-990	39-817-500
1	25-16-500	BOWL & DRAIN ASS'Y	1	1		
	25-41-500	BOWL & DRAIN ASS'Y				1
2	39-909	DRAIN ASSEMBLY	1	1		1
3	82-2-500	FLOAT & LEVER ASS'Y	1	1		
	82-22-500	FLOAT & LEVER ASS'Y				1
4	*39-928	GASKET KIT	1	1		1
5	*181-2	NEEDLE-Idle Adj.	1	1		1
	181-80	NEEDLE-Idle Adj.			1	
6	*181-5-500	NEEDLE-Power Adj.	1	1		1
	181-82	NEEDLE-Power Adj.			1	
7	*293-30-500	NEEDLE & SEAT INLET	1			1
	*293-29-500	NEEDLE & SEAT INLET		1		
8	**182-37	NOZZLE	1	1		1
9	39-910	REPAIR KIT	1			1
	*39-911	REPAIR KIT		1		
10	39-938	PLUG KIT	1	1		1
11	263-82	SPRING-Idle & Thr. Stop Screw	2	2	2	2
	263-326	SPRING-Power N'dle (Not Illus.)			1	
12	6-450	CHOKE SHAFT KIT	1	1		
	6-490	CHOKE SHAFT KIT				1
13	6-455	THROTTLE SHAFT KIT	1	1	1	
	6-491	THROTTLE SHAFT KIT				1
14	.258-60	SCREW-Throttle Stop	1	1	1	1
15	*6-195	SHAFT-Float Hinge	1	1		1

\*Indicates Parts In Repair Kit  
 \*\*If Original Main Nozzle Was Removed Replace With Service Nozzle Only.

# Clinton MODEL VARIATIONS

## 498-0301-000

Sec. II Division 1962  
Revised May, 1974  
Supersedes Feb. 1972

The adaptation of Clinton Engines to a wide variety of uses, results in what is known as Model Variations. Following is a list of models produced to date. Opposite each Engine Model listed are the Part Numbers required in addition to or in place of standard parts. Refer to Basic Parts List for parts not listed in the Model Variations. For replacement engine to fit special applications, external part changes may be required.

UNITS MARKED WITH A ( ) INDICATES CRANKSHAFT CHANGE.  
See Page C of this Manual on "How to Identify Your Clinton Engine."

MODELS	CRANKSHAFT	NOTES	REPL. ENGINE #	MODELS	CRANKSHAFT	NOTES	REPL. ENGINE #
498-0321-002	46-268	1	Note 69	498-0301-046	46-239	65	21572
498-0341-003	46-269	1	Note 69	498-1301-047	46-239	6, 13, 65	21572
498-0361-004	46-226	1	21469	498-1301-048	46-239	3, 6, 13, 40, 42	21553
498-0301-005	46-239		21461	498-0301-049	46-239		21461
498-0301-006	46-218		(21461)	498-1361-050	46-226	1, 6, 13	21469
498-0301-007	46-455		(21461)	498-0301-051	46-239	4	21461
498-0301-008	46-219		21467	498-0301-052	46-239	3, 4	21461
498-0301-009	46-219	2, 3	21467	498-0301-053	46-280	4, 39, 40, 45	(21461)
498-0301-010	46-239	4	21461	498-0301-054	46-239	4, 46, 78	21461
498-1301-011	46-239	5, 6, 13, 65	21572	498-0361-055	46-226	1, 4	21611
498-0301-012	46-239	5, 65	21572	498-1301-056	46-239	4, 6, 13, 19	21553
498-1301-013	46-219	2, 3, 6, 7, 13	21467	498-0301-057	46-239	4, 5, 19	21461
498-0301-014	46-239		21461	498-0301-058	46-838	2, 3, 10	(21461)
498-1301-015	46-239	6, 8, 13	21553	498-5301-059	46-239	43, 47	21462
498-1301-016	46-239	6, 13	21553	498-0361-061	46-226	1, 4, 15, 40, 48, 49, 50, 51, 52	21611
498-1301-017	46-239	6, 9, 13, 65	21572	498-0361-062	46-226	3, 4, 15, 53, 56, 57, 58	21611
498-1301-018	46-239	3, 6, 13	21553	498-5301-063	46-239	38, 39	21462
498-0301-019	46-239	3, 10	21461	498-1301-064	46-218	6, 13	(21461)
498-0301-020	46-239	3, 4	21461	498-1301-065	46-239	6, 13	21553
498-1301-021	46-239	3, 4, 11, 12, 13, 14, 15, 16, 18, 37	21553	498-1361-066	46-226	1, 6, 8, 13	21469
498-0301-022	46-239	4, 19	21461	498-1301-067	46-218	6, 8, 13	(21461)
498-0301-023	46-239	3, 20	21461	498-1301-068	46-239	6, 13	21553
498-1301-024	46-239	3, 4, 6, 13	21553	498-0301-069	46-239		21461
498-0301-025	46-278	4, 12, 15, 21, 22, 24, 37	(21461)	498-1301-070	46-246	4, 6, 13, 32	(21461)
498-0301-026	46-239	65	21572	498-1301-071	46-838	2, 3, 6, 7, 13, 59	(21553)
498-0301-027	46-219	2, 3, 21, 37	21467	498-5301-072	46-838	2, 3, 6, 7, 43, 47, 59	Note 69
498-0301-028	46-239		21461	498-1301-073	46-239	3, 6, 11, 13, 37, 61	21553
498-0301-029	46-219	2, 3, 7, 11, 25, 37	21467	498-1301-074	46-218	6, 8, 13	(21553)
498-0301-030	46-239	2, 3, 5, 21, 25, 37	21461	498-0361-075	46-226	1, 3, 4, 62, 63, 64	21611
498-0301-031	46-219	2, 3, 7	21467	498-7301-076	46-239	6, 31, 43	Note 69
498-0301-032	46-239	3, 4, 11, 12, 15, 16, 26, 37	Note 69	498-1361-077	46-226	1, 6, 13	21469
498-0301-033	46-239	2, 3, 5, 11, 12, 27, 37	Note 69	498-0301-078	46-219	7	21467
498-0301-034	46-240	2, 3, 7, 12, 17, 21, 29, 30	21461	498-0301-079	46-239	4, 65	21572
498-1301-035	46-239	4, 6, 13, 19, 20, 65	21572	498-0301-080	46-239	4, 5, 19, 65	21572
498-1301-036	46-239	4, 6, 13	21461	498-1301-081	46-239	4, 6, 13, 19	21553
498-7301-037	46-239	6, 31, 60	Note 69	498-1301-082	46-239	6, 48, 67, 68, 70	21553
498-0301-038	46-239	8	21461	498-0301-083	46-243	3	21465
498-1301-039	46-239	6, 9, 32, 65	21572	498-0301-084	46-244	3	(21461)
498-1301-040	46-219	2, 6, 12, 13, 33	21467	498-0301-085	46-239	4, 5, 19	21461
498-1301-041	46-244	4, 6, 13	(21461)	498-7301-086	46-239	31, 34	Note 69
498-0301-042	46-239	2, 3, 5, 11, 12, 34, 37	21461	498-0361-087	46-226	1	21469
498-0301-043	46-239	11, 35, 37	21461	498-1361-088	46-226	1, 4, 6, 13, 19, 22	21611
498-5301-044	46-239	28, 36, 38, 39	21462	498-0301-089	46-246	3, 4, 19	(21461)
498-0361-045	46-226	1, 3	21469	498-0301-090	46-239	4, 22	21461

MODELS	CRANKSHAFT	NOTES	REPL. ENGINE #	MODELS	CRANKSHAFT	NOTES	REPL. ENGINE #
498-0301-091	46-239	6, 13	21461	498-1301-148	46-239	3, 4, 6, 13, 19, 77, 78	21553
498-0301-092	46-219	2, 3, 7, 72	21467	498-1301-149	46-243	6, 13, 22	21465
498-0301-093	46-239		21461	498-0301-150	46-239	4, 11, 12, 37, 49, 77, 79	21461
498-0301-094	46-243		21465	498-1361-151	46-226	1, 6, 13	21469
498-1321-095	46-268	1, 6, 13	Note 69	498-7301-152	46-239	31, 60	Note 69
498-1301-096	46-239	4, 6, 12	21553	498-0301-153	46-240	2, 3, 7, 12, 17, 21, 29, 30, 77	Note 69
498-1301-097	46-219	2, 6, 10, 13, 25, 74	Note 69	498-1301-154	46-239	6, 8, 13	21553
498-0361-098	46-226	1, 2, 3, 5, 10	21469	498-1361-155	46-226	1, 6, 8, 13	21469
498-1301-099	46-239	4, 6, 13, 65	21572	498-1301-156	46-239	3, 4, 11, 12, 13, 14, 15, 16, 37	21553
498-0301-100	46-239	4, 65	21572	498-1321-157	46-268	1, 6, 13	Note 69
498-1301-101	46-455	6, 13	(21553)	498-1301-158	46-239	6, 13	21553
498-1301-102	46-219	6, 8, 13	21467	498-1301-159	46-239	6, 8, 13	21553
498-1361-103	46-226	1, 3, 6, 13, 22, 65	21469	498-1321-160	46-268	1, 6, 8, 13	Note 69
498-5361-104	46-226	4, 12, 38, 39, 54	Note 69	498-1301-161	46-243	6, 13	21465
498-1301-105	46-239	3, 4, 6, 13, 19, 20, 58	21461	498-1301-162	46-243	6, 8, 13	21465
498-0321-106	46-268	1, 4, 19	Note 69	498-0301-163	46-239	4, 19, 49, 71, 77	21461
498-1301-107	46-246	4, 6, 12, 13	(21553)	498-0301-164	46-219	2, 7	21467
498-0361-108	46-226	1, 3, 4, 19	21611	498-0301-165	46-239	4	21461
498-1301-109	46-239	6, 13, 65	21572	498-0301-166	46-239	39, 40, 45	21461
498-1301-110	46-218	6, 8, 13	(21553)	498-0361-167	46-226	1, 4, 19, 63	21511
498-1301-111	46-218	6, 13	(21553)	498-1301-168	46-239	4, 6, 13, 49, 77, 79	21553
498-0301-112	46-239		21461	498-0301-169	46-219	2, 33	21467
498-1301-113	46-243	3, 6, 10, 13, 58	21465	498-7301-170	46-239	8, 31, 60	Note 69
498-1301-114	46-239	6, 13	21553	498-0301-171	46-239	3, 11, 12, 37, 77	21461
498-0301-115	46-239	4, 16, 49, 52, 55	21461	498-5301-172	46-239	9, 21, 23, 43	Note 69
498-1301-116	46-239	4, 6, 13, 19	21553	498-0301-173	46-239	21, 37	21461
498-1301-117	46-243	6, 13	21465	498-0301-174	46-218	33	(21461)
498-1301-118	46-239	3, 6, 13	21553	498-1301-175	46-239	4, 6, 12, 13, 49, 77, 79	21553
498-0301-119	46-239	3, 4	21461	498-0301-176	46-239	4, 49, 77, 79	21461
498-0301-120	46-239	4, 19, 75	21461	498-1301-177	46-239	4, 6, 19, 39, 40	21553
498-5301-121	46-838	3, 43, 47, 64	Note 69	498-1301-178	46-239	6, 13, 49, 77, 79	21553
498-5301-122	46-239	3, 4, 12, 21, 24, 43, 47	Note 69	498-1301-179	46-239	6, 13	21553
498-1301-123	46-218	6, 13	(21553)	498-1301-180	46-239	6, 8, 13	21553
498-0361-124	46-226	1, 3, 5	21469	498-1301-181	46-243	6, 13	21465
498-0301-125	46-239	3, 4, 12, 19, 33	21461	498-5301-182	46-240	2, 3, 7, 12, 21, 29, 43, 47, 77	Note 69
498-0301-126	46-240	2, 28	Note 69	498-0301-183	46-239	4, 5, 65	21572
498-1301-127	46-244	4, 6, 13	(21553)	498-0301-184	46-239	4, 5, 44, 65	21572
498-1301-128	46-243	6, 13	21465	498-0301-185	46-239	5, 44, 65	21572
498-0361-131	46-226	1	21469	498-0301-186	46-239	4, 22, 44, 65	21572
498-1301-132	46-239	3, 4, 11, 12, 13, 14, 15, 25, 37, 66	21553	498-0301-187	46-239	44, 65	21572
498-0301-133	46-239	21, 37	21461	498-1361-188	46-226	1, 4, 6, 13, 49, 77, 79	21611
498-0301-134	46-219	7	21467	498-0321-189	46-268	1	Note 69
498-1301-135	46-218	6, 8, 13	(21553)	498-5301-190	46-239	23, 43	Note 69
498-1301-136	46-218	6, 8, 13	(21553)	498-1301-191	46-239	4, 6, 12, 13, 19, 52	21553
498-0301-137	46-246	4, 19, 36, 39, 40	(21461)	498-0301-192	46-239	4, 19, 40, 48, 52, 73	21461
498-0301-138	46-239	4, 12, 19, 49, 77, 79	21461	498-5301-193	46-239	4, 12, 43, 47	Note 69
498-0301-139	46-218	7, 35	(21461)	498-1301-194	46-239	6, 13, 78	21553
498-1321-141	46-268	1, 6, 13	Note 69	498-1301-195	46-243	6, 8, 13	21553
498-0301-142	46-239	21, 37	21461	498-1301-196	46-219	6, 7, 13, 35	21553
498-0301-143	46-239	3, 12, 77	21461	498-1321-197	46-268	1, 6, 13, 78	Note 69
498-0301-144	46-239	12, 49, 77, 79	21461	498-1301-198	46-239	6, 8, 13, 78	21553
498-0301-145	46-219	2, 3, 11, 27, 37	21467	498-1321-199	46-268	1, 6, 8, 13, 78	Note 69
498-1301-146	46-239	6, 13	21553	498-1301-200	46-239	6, 13, 78	21553
498-1301-147	46-239	6, 8, 13	21553	498-7301-201	46-239	31, 60, 78	Note 69
				498-1301-202	46-239	6, 8, 13, 78	21553

MODELS	CRANKSHAFT	NOTES	REPL. ENGINE #	MODELS	CRANKSHAFT	NOTES	REPL. ENGINE #
498-0301-203	46-239	4, 21, 37, 48, 49, 51, 52, 58, 73	Note 69	498-1301-258	46-239	3, 6, 10, 13	21553
498-1361-204	46-226	1, 6, 8, 13	21469	498-0301-259	46-905	8	(21461)
498-1301-205	46-881	6, 13, 22	(21553)	498-0301-260	46-239	5, 44, 65	21623
498-1301-206	46-239	6, 13, 76, 77, 79	21553	498-0301-261	46-219	7, 92	21467
498-0341-207	46-269	1, 3	Note 69	498-1301-262	46-239	8, 41, 80, 82	Note 69
498-1301-208	46-219	6, 7, 8, 13	21467	498-0301-263	46-219	2, 3, 21, 37	(21625)
498-0301-209	46-219	79	21467	498-1301-264	46-239	6, 10, 13, 58	21553
498-0301-210	46-219	3, 7	21467	498-1301-265	46-239	24, 41, 80, 82	Note 69
498-1301-211	46-243	8, 41	21465	498-0301-266	46-239	4, 12, 24, 52	21461
498-1301-212	46-218	8, 41	(21553)	498-0301-267	Std. Model Engine		21461
498-1301-213	46-239	41	21553	498-1301-268	46-239	3, 8, 41	21553
498-1301-214	46-239	8, 41	21553	498-1361-269	46-226	1, 3, 8, 41	21469
498-1301-215	46-239	24, 40, 80, 81, 82	Note 69	498-0361-270	46-226	1, 4, 19, 39, 40, 58, 94	21461
498-0301-216	46-239	4, 44	21461	498-0301-271	46-239	4	21461
498-1301-217	46-243	8, 22, 41	21465	498-1301-272	46-239	6, 24, 80, 82, 95, 96	21630
498-1301-218	46-239	41	21461	498-1301-273	46-219	6, 13, 24, 80, 82, 97	Note 69
498-1301-219	46-239	4, 6, 8, 13	21461	498-0301-274	46-239	4, 8, 11, 12, 37, 76, 77, 79	Note 69
498-1361-220	46-226	1, 4, 6, 8, 13	21469	498-0301-275	46-242	7, 12, 17, 98	Note 69
498-1301-221	46-239	24, 40, 80, 81, 82	Note 69	498-0301-276	46-239	4, 24, 79, 99, 100, 101	21461
498-0361-222	46-226	1, 4	21469	498-0301-277	46-239	4, 79, 101, 102	21461
498-0301-223	46-219	2, 3, 7	21467	498-0301-278	46-246	3	(21461)
498-0301-224	46-219	2, 3, 7, 11, 27, 37	Note 69	498-0301-279	46-246	4, 94, 102	(21461)
498-1301-225	46-239	8, 24, 41, 80, 82	Note 69	498-0301-280	46-246	3, 4, 40, 78	(21461)
498-1321-226	46-268	24, 40, 80, 81, 83	Note 69	498-1301-281	46-239	3, 6, 13, 102	21553
498-1301-227	46-239	8, 41	21553	498-0301-282	46-219	33, 92	21467
498-1361-228	46-226	1, 8, 41	21469	498-0301-283	46-246	4, 79, 102	(21461)
498-1301-229	46-239	41, 80, 82	Note 69	498-5301-284	46-246	3, 4, 78, 103, 104	Note 69
498-1301-230	46-218	24, 41, 80, 82	Note 69	498-7301-285	46-246	4, 24, 79, 105, 106	Note 69
498-1301-231	46-219	7, 41, 80, 82	Note 69	498-1301-286	46-239	6, 24, 95, 96, 107	Note 69
498-1301-232	46-239	8, 41	21553	498-0301-287	46-246	79, 102, 108	(21461)
498-1301-233	46-243	24, 40, 80, 81, 82	Note 69	498-0301-288	46-239	3, 8	21461
498-1301-234	46-219	2, 3, 7, 41	21467	498-0301-289	46-239	94	21461
498-1301-235	46-243	22, 41	21465	498-0301-290	46-239	11, 77, 91, 109, 110	Note 69
498-1301-236	46-455	41, 76, 77, 79	21553	498-0301-291	46-239	4, 5, 44, 65, 107	Note 69
498-0301-237	46-239	3, 4, 44	21461	498-0301-292	46-246	4, 24, 79, 100, 101, 111	(21461)
498-1301-238	46-239	40, 80, 81, 82	Note 69	498-7301-293	46-246	4, 24, 79, 100, 101, 105, 111	Note 69
498-1301-239	46-243	24, 41, 80, 82	Note 69	498-0301-294	46-239	4, 5, 44, 107	Note 69
498-1301-240	46-239	41	21553	498-0301-295	46-218	8	(21461)
498-0301-241	46-239	4, 5, 19, 48, 73	Note 69	498-0301-296	46-239	107	Note 69
498-1301-242	46-239	3, 41	21553	498-0301-297	46-239	4, 107	Note 69
498-1301-243	46-239	6, 39, 40		498-0301-298	46-239	3, 10	21461
498-7301-244	46-239	84, 85, 86	Note 69	498-0301-299	46-239	4, 5, 44	21461
498-1301-245	46-239	6, 24, 39, 40, 80, 82	21630	498-0301-300	46-239	4, 5, 65	21623
498-1301-246	46-239	8, 24, 41, 80, 82	Note 69	498-0301-301	46-239	3, 4, 5, 22, 44, 107	Note 69
498-1301-247	46-239	6, 13, 21, 24, 37, 87, 88, 89	Note 69	498-0301-302	46-239	3, 4, 5, 22, 44, 65, 107	Note 69
498-1301-248	46-239	8, 41	21553				
498-1301-249	46-239	40, 76, 79, 80, 81, 82	21630				
498-1301-250	46-239	6, 13	21553				
498-0301-251	46-239	4, 19, 22	21461				
498-1301-252	46-218	24, 41, 80, 82	Note 69				
498-0301-253	46-219	7, 80, 82	Note 69				
498-0301-254	46-268	93	Note 69				
498-0301-255	46-239	11, 77, 80, 90, 91	Note 69				
498-1301-256	46-239	3, 6, 13, 58, 61, 77, 78	Note 69				
498-1301-257	46-239	40, 76, 77, 79, 81	21553				

MODELS	CRANKSHAFT	NOTES	REPL. ENGINE #	MODELS	CRANKSHAFT	NOTES	REPL. ENGINE #
498-0361-303	46-226	1, 4, 46, 49 79, 112	21469				
498-0361-304	46-226	1, 11, 77, 91 110, 113, 114	21469				
498-1305-305	46-218	6, 8, 13	Note 69				
498-1301-306	46-239	6, 13, 49	21553				
498-0301-307	46-246	4	21461				
498-1301-308	46-218	6, 24, 107	Note 69				
498-0301-309	46-218	8	Note 69				
498-1301-310	46-239	40, 41, 76, 79 107	21630				
498-0301-311	46-239	3, 4, 22, 44 65	Note 69				
498-0301-312	46-246	2, 4, 49	21461				
498-5301-313	46-246	4, 49, 104 115	21462				
498-5301-314	46-246	4, 49, 104 115	21462				
498-0301-315	46-246	4, 5, 116, 117 118, 119	21654				
498-0301-316	46-219	7, 8	Note 69				
498-0301-317	46-246	4, 76, 116 118	21654				
498-0301-318	46-246	4, 120	21461				
498-0301-319	46-239	50, 118, 119	21654				
498-0301-320	46-239	116, 117	21630				
498-0301-321	46-239	4, 116, 117	21630				
498-0301-322	46-239	4, 22, 44, 46 76, 116, 117 120	21630				
498-1301-323	46-239	6, 13	21461				
498-0301-324	46-239	4, 19, 121	Note 69				
498-0361-325	46-226	1, 4, 19, 22 40, 118	21469				
498-0301-326	46-239	4, 21, 37, 76 118	Note 69				



498 SERIES MODEL VARIATIONS NOTES:

- Note 1 Use 94-163-990 Seal (Oil), 22-103 Block. 4:1 and 6:1 Reduction Units use 20-61 Bearing (Cup) and 20-14 Bearing (Cone). Standard Bearing (Cup) and Bearing (Cone) are used on 2:1 Reduction Units. Refer to Section III, Division C, Page 1, for breakdown on Speed Reducer.
- Note 2 Use 124-1-500 Housing Ass'y (Governor Bearing) and 304-71 Spacer.
- Note 3 Use 69-48 Horn (Air), (2) 69-69 Mandrel, and 158-74 Tube (Breather).
- Note 4 Use 157-123-500 Lever (Remote Control), 232-24 Retainer, 304-88 Washer Flat, 232-24 Retainer, 203-208 Pin (Pivot), 304-28 Washer (Lock), 81-3 Clamp (Cable), 258-171 Screw, and 183-25-500 Nut.
- Note 5 Use 2-9-500 Cleaner (Air), 304-136 Washer, 258-72 Screw (Air Cleaner), 304-134 Washer (Flat), and 304-28 Washer (Lock).
- Note 6 Use 219-34-500 Pulley (Starting), 304-132 Washer (Flywheel), and 246-13-500 Starter Rope.
- Note 7 This unit requires Commercial Ignition Shielding. Refer to Sec. III, Div. Q., Page 1 or 2.
- Note 8 Use 277-80-500 Tank Ass'y (Fuel), 69-25 Elbow (with Screen), 69-59 Nipple (Valve to Tank), and 293-10 Valve (3-Way), 69-24 Elbow, 69-5 Connector, (6) 258-116 Screw (Head to Block), and 259-63-500 Deflector Ass'y, 122-10 Head. Note: When operated at high altitudes, use standard head.
- Note 9 Use 2-11-500 Cleaner Ass'y (Air), 304-136 Washer, 304-134 Washer (Flat), and 304-28 Washer (Lock).
- Note 10 Use 293-170 Valve (Fuel Shut-Off), 69-287 Connector (to Shut-Off Valve), 69-288 Elbow (to Carb.), 158-390 Line Ass'y (Fuel), and (2) 183-244 Nut & Ferrule Ass'y.
- Note 11 Use 291-2-990 Valve (Exhaust-Stellite). Use Standard Exhaust Valve on intake side.
- Note 12 Use 307-121-500 Wire Ass'y (Ignition Shorting), 70-7 Grommet, 258-936-500 Screw (Shorting Wire to Grommet) and 183-26 Nut (Wire to Stator).
- Note 13 Use 259-104-500 Housing Blower.
- Note 14 Use 83-17-500 Flywheel Ass'y, 219-20 Pulley (Starting), and 246-13-500 Rope Ass'y (Starting).
- Note 15 Use 216-27 Plug (Oil Drain).
- Note 16 Use 277-85-500 Tank Ass'y (Fuel), (2) 26-162 Strap (Tank Mounting), 293-36 Valve (Fuel Shut-Off), 45-95-500 Cap Ass'y (Fuel Tank), 69-15 Elbow (Carb. to Fuel Line), and 158-414-500 Line Ass'y (Fuel).
- Note 17 Use 94-6 Gasket, 220-23-500 Pump (Fuel), (2) 258-232-500 Screw, (3) 69-24 Connector, 69-59 Connector, 69-19 Elbow, 293-32-500 Valve Filter, 39-213-990 Carburetor.
- Note 18 Clinton does not supply Air Cleaner or Muffler for this engine.
- Note 19 Use 307-31-500 Cable Ass'y (Remote Control).
- Note 20 Use 304-39 Spacer, 81-3 Clamp, and 258-243-500 Screw (Clamp and Spacer to Block).
- Note 21 Use 263-30 Spring (Valve-Exhaust), 291-19-500 Roto-Cap, 291-18-990 Valve (Exhaust-Stellite), and 203-58 Pin (Valve). Note: Use Standard Exhaust Valve on intake side.
- Note 22 Use 69-16 Elbow (Muffler), 183-37 Nut (Lock Elbow).
- Note 23 Use 22-806-500 Block, 215-450 Plate Bearing, 83-101-500 Flywheel, 259-578-500 Deflector (Cylinder). Refer to Section III, Div. N, Page 7, for exploded view and parts list for starter.
- Note 24 Use 45-66 Cover (Spark Plug).
- Note 25 Use 277-59-500 Tank Ass'y (Fuel), (2) 26-162 Strap (Tank Mounting) and 45-95-500 Cap Ass'y (Fuel).
- Note 26 Use 83-17-500 Flywheel, 219-20 Pulley (Starting), 21-2 Belt, 259-383-500 Housing Ass'y (Blower) (1:3), 304-77 Spacer and 265-92-500 Starter Ass'y (Recoil).
- Note 27 Use 39-758-990 Carburetor, 25-36-500 Filter L. P. G., 26-87 Bracket (Regulator Mounting), 231-2 Regulator (Primary), 231-4 Regulator (Secondary), (4) 258-41-500 Screw & L'Washer, 69-120 Fitting (Reducer to Primary Regulator Outlet), 69-121 Fitting (Reducer to Secondary Regulator Inlet), and 69-5 Connector.
- Note 28 Use 22-506 Block, 94-6 Gasket (Fuel Pump Hole), 45-39 Cover (Fuel Pump Hole).
- Note 29 Use 2-18-500 Body Ass'y (Air Cleaner), 2-33 Element (Air Cleaner), 45-5 Cover, and 258-70 Screw (Air Cleaner to Air Horn), (2) 94-550 Gasket (Air Cleaner Element).
- Note 30 Use 22-158 Block.
- Note 31 Use 22-806-500 Block, 215-450 Plate (Bearing), 268-19-500 Magneto Ass'y, 83-101-500 Flywheel Ass'y, 45-349 Cover (Starter Opening), (2) 258-936-500 Screw & L'Washer Ass'y (Cover to Bearing Plate), (4) 258-232-500 Screw & L'Washer (to Plug Starter Mounting Bracket Holes in Block), 259-578-500 Deflector. Refer to Section III, Div. N, Page 7, for exploded view and parts list for AC Lighting Coil.
- Note 32 Clinton does not supply the Carburetor for this Unit.
- Note 33 Use 267-27-500 Spark Plug (Resistor).
- Note 34 Use 277-67-500 Tank Ass'y (Fuel), 69-59 Nipple, 293-32-500 Valve (Fuel Shut-Off), 69-5 Connector and 45-95-500 Cap Ass'y (Fuel).
- Note 35 Use 157-10 Arm (Governor), 263-55 Spring (Extension-Governor), and 107-1 Adjustor (Governor Arm).
- Note 36 Use 69-45 Horn (Air), 69-24 Elbow (Horn to Breather Tube), and 158-67 Tube (Breather).
- Note 37 Use 22-136-500 Block.
- Note 38 Refer to Sec. III, Div. N, Page 10, for exploded view and parts list on 12-Volt Starter Generator.
- Note 39 Use 94-247 Gasket (Air Horn to Adaptor), 1-87 Adaptor (Air Horn), 94-9 Gasket (Adaptor to Air Cleaner), and 258-163 Screw (Air Cleaner to Air Horn).
- Note 40 Use 26-62-500 and 26-63-500 Bracket and Strap (Tank Mounting), (2) 304-88 Washer, (2) 244-19 Rivet Bracket to Housing, 277-382-500 Tank, 293-37 Valve (Fuel Shut-Off), 45-96-500 Cap (Fuel), (2) 258-244-500 Screw & L'Washer, (2) 304-73 Spacer, (2) 258-71 Screw, (2) 304-26 Washer.
- Note 41 Use 219-172 Pulley (Starting), 83-112-500 Flywheel, 203-21 Pin Roll, 304-622 Washer (Lock), 259-104-500 Housing and 246-40-500 Starter Rope.
- Note 42 Use 2-219-500 Cleaner Ass'y (Air) and 258-72 Screw (Air Cleaner to Air Horn).
- Note 43 Use 259-597-500 Housing Ass'y (Blower).
- Note 44 Use 265-224-500 Starter, 259-750-500 Housing, (2) 258-160 Screw, 258-965 Screw.
- Note 45 Use 69-40 Horn (Air).
- Note 46 Use 69-64 Nipple (Muffler).
- Note 47 Use 22-806-500 Block Ass'y, 215-450 Plate (Bearing), 268-18-500 Magneto Ass'y, 83-101-500 Flywheel Ass'y, 259-578-500 Deflector (Cylinder). Refer to Section III, Div. N, Page 7, for exploded view & parts list for 12-Volt Starter & DC Battery charging.
- Note 48 Use 39-817-500 Carburetor, 169-90-500 Manifold, 94-515 Gasket (Manifold to Carb.), (2) 24-11 Stud Carb. to Manifold, (2) 183-29-500 Nut, 159-147 Link (Governor).

## 498-0301-000 MODEL VARIATIONS CONT.

- Note 49 Use 69-269 Connector (Breather Tube), 158-74 Tube (Breather), 69-23 Elbow, 69-69 Mandrel Hose (Retaining).
- Note 50 Use 69-16 Elbow (Muffler), 183-37 Nut (Lock) and 69-62 Nipple (to Elbow).
- Note 51 Use 94-13 Gasket (Spacer to Carb. and Air Cleaner), 900-340 Spacer (Air Cleaner to Carb.) and 159-147 Link (Governor).
- Note 52 Use 2-144 Body (Air Cleaner) (2) 304-562 Washer (Air Cleaner), (2) 258-902 Screw (Air Cleaner to Carb.), 2-175-990 Element, 45-337 Cover (Air Cleaner).
- Note 53 Use 20-61 Cup (Bearing), 20-14 Cone (Bearing) 22-103 Block Ass'y and 94-163-990 Seal (Oil). Refer to Sec. III, Div. C, Page 1, for parts breakdown, Speed Reducer is the same as 260-447 except use 106-271-500 Gear & Shaft Ass'y.
- Note 54 Same as Note 1, except use 22-126 Block in place of 22-103 Block.
- Note 55 Use 304-69 Spacer Head (Screw) and 258-88 Screw (Head).
- Note 56 Use 265-92-500 Starter Ass'y (Recoil), 219-40-500 Pulley (Starter) and 304-77 Spacer.
- Note 57 Use 259-677 Shield (Heat Retaining), 304-604 Spacer, 258-956 Screw (3/16-24x3 Stove Bolt) and 258-930 Screw.
- Note 58 Use 45-68-500 Cover (Spark Plug-Shorting), 266-16 Clip Shorting.
- Note 59 Use 18-14 Base, 45-179 Cap (Oil Filler) and 94-82 Gasket (Oil Filler Cap).
- Note 60 Use 259-579-500 Housing Ass'y (Blower), 304-132 Washer (Flywheel), 219-34-500 Pulley and 246-13-500 Rope Ass'y (Starting).
- Note 61 Use 159-35 Link (Governor-Over Ride), 157-58 Lever (Governor-Over Ride), 258-205 Screw (Shoulder), 157-87-500 Lever Ass'y (Speed Control), 258-107 Screw (to Loom Nut), 157-145 Stop (Throttle Lever), 304-318 L'Washer, 26-111-500 Bracket (Remote Control).
- Note 62 Use 304-559 Spacer (Remote Control Clamp), 258-171 Screw (Spacer and Clamp to Block), 304-14 Washer, Spacer and Clamp to Block.
- Note 63 Use 69-18 Elbow (Muffler) and 183-37 Lock Nut.
- Note 64 Use 277-67-500 Tank Ass'y (Fuel), (2) 26-162 Strap and 45-95-500 Cap Ass'y (Fuel).
- Note 65 Use 18-6 Base.
- Note 66 Use 293-149 Valve (Shut-Off), 69-118 Elbow (Tube), 158-414-500 Line Ass'y (Fuel).
- Note 67 Use 2-177-500 Air Cleaner Ass'y, 2-100 Body (Air Cleaner), 2-99-990 Element and 45-175 Cover.
- Note 68 Use 81-169 Clip (Fuel Line) and 258-20 Screw (Clip to Plate).
- Note 69 Special Engine. Order by complete model number.
- Note 70 Use 277-396-500 Tank Ass'y (Fuel), 26-596 Bracket (Tank Mounting), 26-594 Strap.
- Note 71 Use 2-157-500 Air Cleaner, 2-156-990 Element, 2-157 Body, 45-386 Cover.
- Note 72 Use 69-67 Nipple (Muffler).
- Note 73 Use 170-136-500 Muffler.
- Note 74 Use 307-342 Shorting Wire (Shielded), 183-26 Nut (Shorting Wire to Magneto), 304-12 L'Washer (Shorting Wire to Condenser hold down Screw), 307-272-500 Lead & Elbow Ass'y (Magneto Hi-Tension), 307-57 Terminal (Sleeve), 258-155 Screw (Hi-Tension Lead Ground to Plate), 304-592 Washer (Hi-Tension Lead Ground to Plate), 266-53-500 Shorting Switch, 304-593 Washer (Switch to Blower Housing), 267-76-500 Spark Plug (Champion XEJ-8B), 158-65 Tube (Breather), 69-282 Horn (Air), 216-26 Plug (Air Horn), 69-69 Mandrel, 69-288 Elbow (Fuel Line to Carb.), 26-602 Bracket (Fuel Line to Bearing Plate), 81-3 Clamp (Fuel Line to Bearing Plate), 258-83 Screw (Bracket to Bearing Plate), 304-592 L'Washer (Bracket to Bearing Plate), 258-936-500 Screw & L'Washer (Clamp to Bracket).
- Note 75 Use 2-146-500 Air Cleaner Ass'y, 258-163 Screw, 304-28 Washer (Lock), 304-134 Washer (Flat), 304-136 Washer (Rubber).
- Note 76 Use 304-640 Adaptor (Air Cleaner), 69-281 Connector (Breather Tube), (2) 258-902 Screw (Air Cleaner Mounting), 69-23 Elbow, 69-69 Mandrel, 69-269 Connector, 158-74 Tube.
- Note 77 Use 233-137-500 Chrome Re-Ring Set. (237-137-500 .020 Oversize Available.)
- Note 78 Use 2-172-500 Air Cleaner, 258-72 Screw, 2-173 Body, 2-174 Element and 45-408-500 Cover.
- Note 79 Use 2-215-500 Air Cleaner, 2-215 Base Air Cleaner, 2-174 Element, 45-408-500 Cover, 183-266 Nut (Wing) and (2) 258-131 Screw.
- Note 80 Use 215-532 Bearing Plate, 6-484 Camshaft, 215-526-500 Coil & Bracket Assembly, 245-126-500 Push Rod Breaker Points, 135-5-500 Breaker Point, 135-272-500 Condenser, (2) 258-83 Screw (Condenser & Breaker Point), 304-527 Washer Flat, 304-380 Washer Lock, 45-440-500 Cover Assembly Breaker Points, (2) 258-1015 Screw Breaker Cover.
- Note 81 Same as Note 41 except use 259-144-500 Housing Blower in place of 259-104-500, 900-340 Adaptor (Air Horn) and (2) 258-947 Screw (Air Horn to Carburetor).
- Note 82 Use 22-840-500 Block.
- Note 83 Same as Note 1 except use 22-841-500 Block in place of 22-103.
- Note 84 Use 22-806-500 Block, 215-450 Plate (Bearing), 268-19-500 Magneto Ass'y, 83-115-500 Flywheel Ass'y, (4) 258-232-500 Screw & L/Washer Ass'y, 259-578-500 Deflector. Refer to Sec. III Div. N Page 7 for exploded view and parts list for A. C. lighting coil.
- Note 85 Use 219-172 Pulley Rope Starting, 304-622 Lock Washer, 183-32 Nut, 246-40-500 Starting Rope.
- Note 86 Use 259-579 Housing Ass'y (Blower), 277-382-500 Tank Ass'y, 293-37 Valve Fuel Shut Off, 45-95-500 Cap & Gasket Ass'y, (2) 26-59-500 Strap Fuel Tank, (2) 258-454-500 Screw & L/Washer Ass'y, (2) 304-73 Spacer, (2) 258-947 Screw, (2) 94-13 Gasket.
- Note 87 Use 266-53 Switch (Ignition), 307-121-500 Wire Ass'y, 26-28 Bracket Switch Mounting, 258-602 Screw Housing to Bearing Plate, 304-26 Washer Internal Lock.
- Note 88 Use 6-12 Camshaft, 69-69 Mandrel Hose, 158-74 Breather Tube.
- Note 89 Clinton Does Not Furnish Carburetor Ass'y, Fuel Tank, Governor Parts or Carburetor Orifice Plate on This Engine. Manufactured for Champion Manufacturing Company.
- Note 90 Use 22-847-500 Block Ass'y, 94-661-990 Seal Oil, 304-663 Washer Felt, 94-660 Seal (Gov. Shaft).
- Note 91 Use 307-113-500 Wire Ass'y, 215-134 Plate Switch Mounting, 266-53 Switch Ignition, 2-222 Element Breather, 258-232-500 Screw & L/Washer Ass'y, 158-74 Breather Tube, 244-110 Rivet, (2) 81-7 Clamp.
- Note 92 Use 263-55 Spring Governor.
- Note 93 Use 22-151 Block Ass'y.
- Note 94 Use 2-144 Body Air Cleaner, 94-458 Gasket, 2-223 Cup Air Cleaner, 258-131 Screw, 2-225 Element, 45-337 Cover, 219-172 Pulley.

498 Series Model Notes:

- Note 95 Same as Note 40 Except use 293-32-500 Valve Ass'y instead of 293-37, use 69-59 Nipple, 69-42 Elbow.  
 Note 96 Use 259-107-500 Housing-Blower.  
 Note 97 Same as Note 34 Except use 277-61-500 Tank Ass'y instead of 277-67-500 Tank Ass'y.  
 Note 98 Use 22-544-500 Block Ass'y.  
 Note 99 Use 307-120-500 Wire Ass'y, 183-26 Nut, 307-124-500 Wire Ass'y, 266-53-990 Switch.  
 Note 100 Use 277-515-500 Tank Ass'y, 134-12-500 Indicator Ass'y-Fuel, 94-630-990 Gasket, (2) 258-1003 Screw.  
 Note 101 Use 136-129 Insert-Recoil Handle.  
 Note 102 Use 45-68-500 Cover-Spark Plug.  
 Note 103 Same as Note 47 Except use 22-721-500 Block Ass'y.  
 Note 104 Use 259-841-500 Housing Ass'y-Blower, (2) 258-102-500 Screw & L/W Ass'y, 258-198-500 Screw & L/W Ass'y, (2) 304-73 Spacer, (2) 26-59-500 Strap, (2) 258-254-500 Screw & L/W Ass'y, 277-382-500 Tank Ass'y, 45-95-500 Cap & Gasket Ass'y.  
 Note 105 Use 268-18-500 Magneto Ass'y, 83-120-500 Flywheel Ass'y, 26-28 Bracket, 266-53 Switch. Refer to Sec. III, Div. N, Page 7 for Exploded View & Parts List for Lighting Coil.  
 Note 106 Use 170-164-500 Muffler Ass'y.  
 Note 107 Use 22-857-500 Block Ass'y, 6-484-500 Camshaft Ass'y, 215-526-500 Coil & Bracket Ass'y, 70-7 Grommet, 307-119-500 Wire, 258-936-500 Screw, 245-128 Rod-Push, 266-61 Clip, 26-13 Bracket-Breaker Ass'y, 135-5-500 Breaker Points, 258-1069 Screw-Allen, 304-27 Spring-L/W, 304-377 Washer-Flat, 135-278 Condenser, 183-54 Nut, (2) 258-132-500 Screw, 45-13-500 Cover Ass'y, 70-8 Grommet, (2) 258-958-500 Screw & L/W Ass'y.  
 Note 108 Use 158-357 Fuel Line. Cut to 15 inches.  
 Note 109 Same as Note 90 Except use 22-858-500 instead of 22-847-500.  
 Note 110 Use 39-976-500 Carburetor Ass'y.  
 Note 111 Same as Note 99 Plus 70-7 Grommet, 258-936-500 Screw & L/W Ass'y.  
 Note 112 Use 259-877-500 Housing & Cable Ass'y, (2) 304-73 Spacer Tank, (2) 26-151 Strap Tank, 277-382-500 Tank Ass'y.  
 Note 113 Same as Note: 1 Except use 22-862 Block.  
 Note 114 Same as Note: 107 Except use 22-862 Block.  
 Note 115 Same as Note: 23 Except use 22-864 Block.  
 Note 116 Use 22-870 Block  
 Note 117 Use 6-569-500 Camshaft Ass'y (2) 6-570 Axle Cam.  
 Note 118 Use 265-279-500 Starter Recoil, 265-277 Cup Starter, 304-132 Washer, 203-21 Pin Roll, 183-32 Nut 1-122 Adaptor.  
 Note 119 Use 259-750-500 Housing, (4) 258-160 Screw.  
 Note 120 Use Type C Air Cleaner, 2-230 Plate, 26-784-500 Bracket, 2-233 Element, 45-499 Cover, 183-65 Element.  
 Note 121 Use 268-25-500 Stator, 83-120-500 Flywheel.