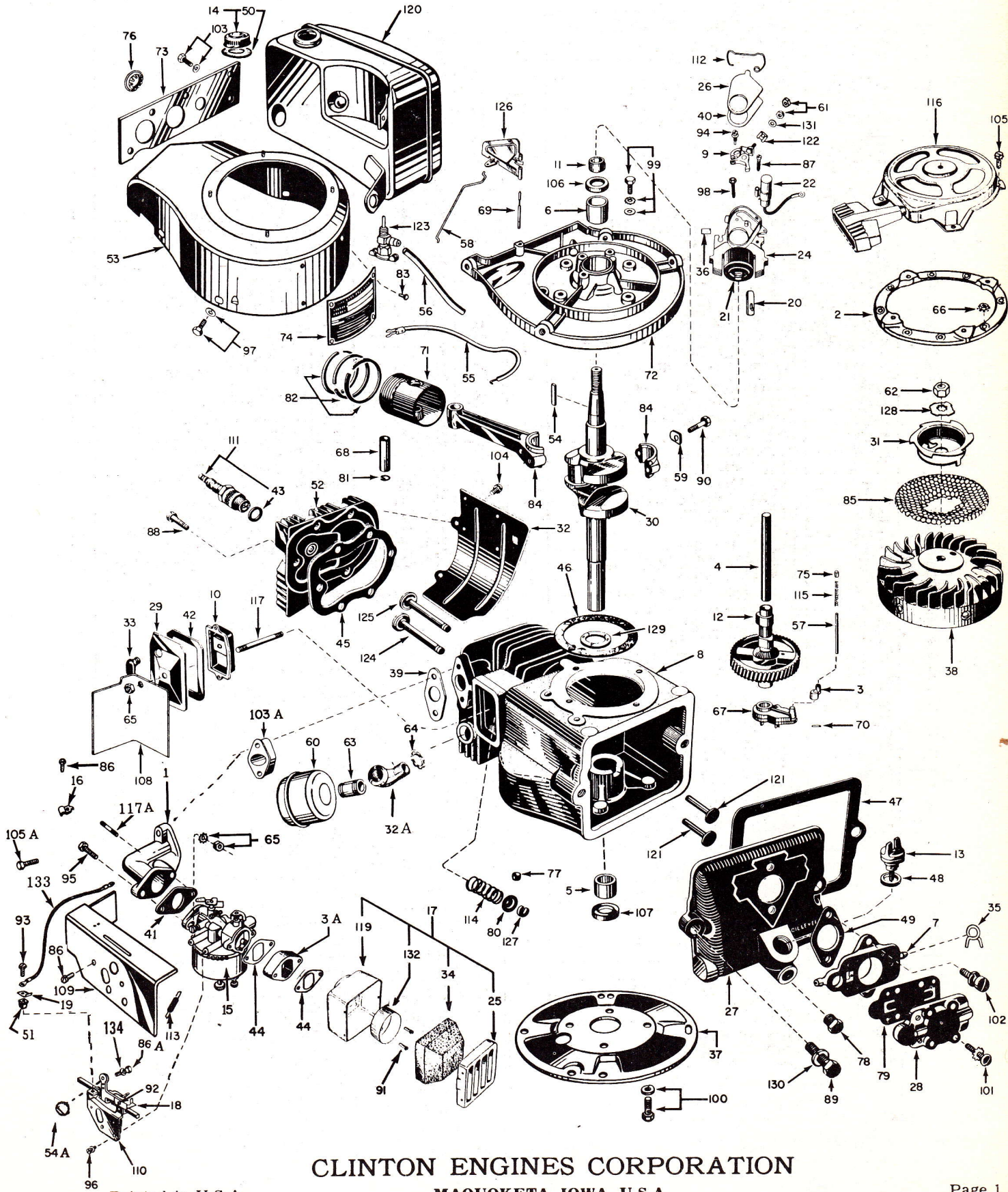


Clinton BASIC PARTS LIST

499-0004-000

SEC. 11, DIVISION 1962
ISSUED MARCH, 1975



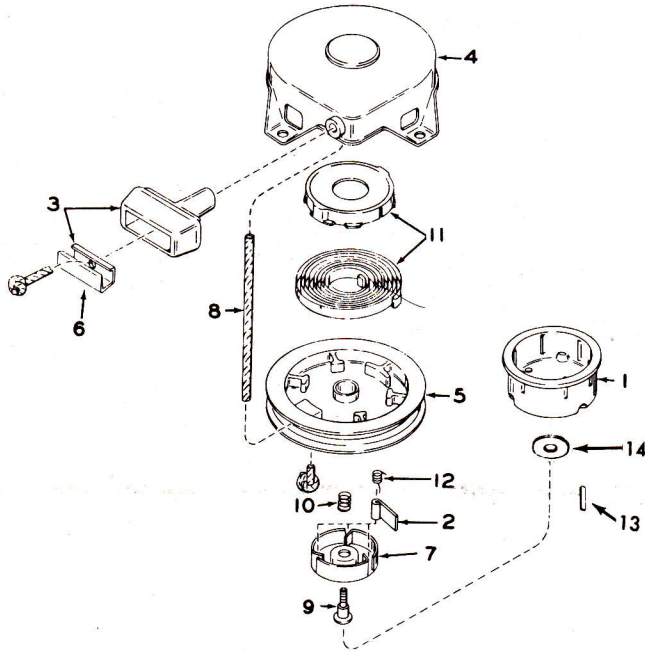
CLINTON ENGINES CORPORATION
MAQUOKETA, IOWA, U.S.A.

Printed in U.S.A.

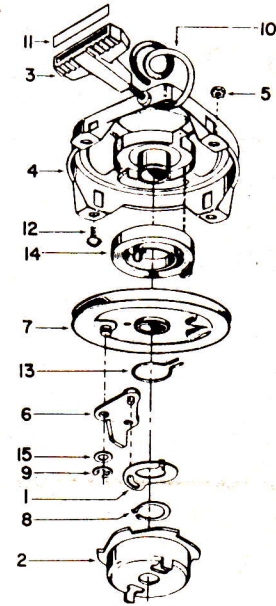
Ref. No.	Part No.	Description	Qty.	Ref. No.	Part No.	Description	Qty.
1	1-109-500	ADAPTOR-Carb. to Block	1	66	183-25-500	NUT & L/W ASS'Y-Str. to Adap.	4
2	1-122	ADAPTOR-Recoil Str. to Hsg.	1	67	220-173-500	OIL PUMP ASS'Y	1
3	1-10	ADAPTOR-Oil Pump	1	68	203-65	PIN-Wrist	1
3A	900-340	ADAPTOR-Air Cleaner	1	69	203-91	PIN-Governor Vane Pivot	1
4	6-2	AXLE-Camshaft	2	70	203-19	PIN-Drive (Oil Pump Adap.)	1
5	20-50	BEARING-Sleeve (Block)	1	71	204-8-500	PISTON ASS'Y-Std. (Incl. Nos. 68, 81 & 82)	1
6	20-52	BEARING-Sleeve (Bearing Plate)	1		206-8-500	PISTON ASS'Y-.010	
7	220-2	BODY-Fuel Pump	1		207-8-500	PISTON ASS'Y-.020	
8	22-561-500	BLOCK-Cyl. (Incl. Ref. Nos. 5 & 107)	1	72	215-230-500	PLATE-Bearing (Incl. Nos. 6 & 106)	1
9	135-7-500	BREAKER POINT ASS'Y	1	73	215-99	PLATE-Fuel Tank Mounting	1
10	29-35-500	BREATHER ASS'Y	1	74	58-105	PLATE-Name	1
11	157-28	CAM-Magneto Breaker	1	75	216-6	PLUG-Oil Pump Line	1
12	6-8	CAMSHAFT	1	76	216-3	PLUG-Button	2
13	45-269-500	CAP-Oil Filler	1	77	216-4	PLUG-Camshaft Hole (In. Blk.)	1
14	45-424-500	CAP ASS'Y-Fuel Tank (Incl. Ref. No. 50)	1	78	216-24	PLUG-Oil Drain	1
15	39-874-990	CARBURETOR	1	79	220-18	PUMP-Diaphragm	1
16	81-13	CLAMP-Remote Control	1	80	304-135	RETAINER-Valve Spring	2
17	2-193	CLEANER ASS'Y-Incl. Ref. Nos. 25, 34, 119 & 132)	1	81	232-41	RING-Wrist Pin Lock	2
18	81-71	CLIP-Spring Adj.	1	82	233-113-500	RING SET-Std.	1
19	266-26	CLIP-Ignition Shorting	1		235-122-500	RING SET-.010	
20	81-20	CLIP-Coil Holding	1		237-122-500	RING SET-.020	
21	135-13-990	COIL-Mag. (Without Lamin.)	1		233-137-500	CHROME RING SET-Std.	
22	135-29-990	CONDENSER ASS'Y	1		237-137-500	CHROME RING SET-.020	
24	135-37-500	CORE & BREAKER BOX ASS'Y	1	83	244-21	RIVET-Name Plate	4
25	45-175	COVER-Air Cleaner	1	84	245-62-500	ROD-Connecting	1
26	45-337	COVER-Dust, Breaker Points	1	85	257-31	SCREEN-Rotating	1
27	45-26	COVER-Crankcase End	1	86	258-159	SCREW-Shroud to Bracket, Clamp to Shroud	3
28	45-41	COVER-Fuel Pump	1	86A	258-41-500	SCREW-Control Knob	1
29	45-71	COVER-Valve Chamber	1	87	258-299	SCREW-Cond. to Plate	1
30	46-786	CRANKSHAFT	1	88	258-86	SCREW-Cyl. Head to Blk.	6
31	See Page 3	CUP-Recoil Starter	1	89	258-11	SCREW-End Cover to Block	2
	58-349	DECAL-Air Cleaner	1	90	258-71	SCREW-Connecting Rod	2
	58-461	DECAL-Arrowhead	1	91	258-902	SCREW-Air Cln. Base to Carb.	2
	58-95	DECAL-Throttle Control	1	92	258-374	SCREW-Spr. Adj. Clip to Slide	1
32	259-36	DEFLECTOR-Air	1	93	258-83	SCREW-Insulation Grommet	1
32A	69-18	ELBOW-90°	1	94	258-297-500	SCREW & L/W ASS'Y-Brk. Pts.	1
33	69-23	ELBOW-Breather	1	95	258-190-500	SCREW-Carb. to Adaptor	1
34	2-225	ELEMENT-Air Cleaner	1	96	258-936-500	SCREW & L/W ASS'Y-Bracket to Carb.	2
35	81-7	FASTENERS-Hose	2	97	258-280-500	SCREW & L/W ASS'Y-Hsg. to Tank to Engine	9
36	94-189	FELT-Lub., Cam Follower	1	98	258-108-500	SCREW & L/W ASS'Y-Coil Ass'y to Plate	2
37	1-30	FLANGE-Engine Adaptor	1	99	258-274-500	SCREW & L/W ASS'Y-Bearing Plate to Block	4
38	83-15-500	FLYWHEEL ASS'Y	1	100	258-224-500	SCREW & L/W ASS'Y-Flg. to Blk.	4
39	94-68	GASKET-Carb. Spacer	2	101	258-105	SCREW & L/W ASS'Y-Fuel Pump Cover to Body	6
40	94-241	GASKET-Breaker Points Cover	1	102	258-246-500	SCREW & L/W ASS'Y-Fl. Pump to Crk. End Cover	2
41	94-30	GASKET-Carburetor	1	103	258-279-500	SCREW & L/W ASS'Y	2
42	94-101	GASKET-Vlv. Cham. Cover to Blk.	2	103A	1-91	SPACER-Carb.	1
43	94-92-990	GASKET-Spark Plug	1	104	258-6-500	SCREW & L/W ASS'Y-Def. to Hd.	2
44	94-13	GASKET-Air Cleaner	2	105	258-241-500	SCREW-Recoil to Adaptor	4
45	94-38-990	GASKET-Cylinder Head	1	105A	258-9-500	SCREW-Adaptor to Block	2
46	94-25	GASKET-Bearing Plt. (.015 Std.)	1	106	94-163-990	SEAL-Oil (Bearing Plate)	1
	92-25	GASKET-.005		107	94-176-990	SEAL-Oil (Block)	1
	93-25	GASKET-.010		108	259-382	SHIELD-Carb. Heat Deflector	1
	95-25	GASKET-.020		109	259-520	SHROUD-Carburetor	1
47	94-36	GASKET-Crankcase End Cover	1	110	26-657-500	SLIDE ASS'Y-Governor Reg.	1
48	94-82	GASKET-Oil Filler Plug	1	111	267-5-500	SPARK PLUG ASS'Y-J-8 (Incl. Ref. No. 43)	1
49	94-7	GASKET-Fuel Pump Body to Crankcase End Cover	1	112	263-10	SPRING-Breaker Box Cover	1
50	94-62	GASKET-Fuel Tank Cap	1	113	263-284	SPRING-Ext. (Speed Reg.)	1
	94-593	GASKET KIT-Engine Overhaul	1	114	263-92	SPRING-Valve	2
51	183-259-990	GROMMET-Short, Wire to Slide	1	115	263-27	SPRING-Oil Dist. Line	1
52	122-2	HEAD-Cylinder	1	116	See Page 3	STARTER ASS'Y-Recoil	1
53	259-359-500	HOUSING ASS'Y-Blower	1	117	24-12	STUD-Vlv. Chamber Cover	1
54	148-4	KEY-Flywheel	1	117A	24-13	STUD-Adaptor	1
54A	121-10	KNOB-Throttle	1	119	2-144	SUPPORT-Air Cleaner Body	1
55	307-357-990	LEAD-Magneto-Hi-Tension	1	120	277-63-500	TANK ASS'Y-Fuel	1
56	158-25	LINE-Fuel	1	121	278-1	TAPPET-Valve	2
57	158-52	LINE-Oil Distributor	1	122	307-230	TERMINAL-Jamtite Cond. Lead	1
58	159-116	LINK-Air Governor	1	123	293-37	VALVE-Fuel Shut-Off	1
59	148-10	LOCK-Conn. Rod Cap.	2	124	291-1-990	VALVE-Exhaust (Std.)	1
	268-6-500	MAGNETO ASS'Y-Incl. Nos. 9, 20, 21, 22, 24, 36, 61, 87, 94, 112, 122 & 131	1		292-9-990	VALVE-Exhaust (.010)	1
60	170-37-500	MUFFLER	1		292-1	VALVE-Exhaust	1
61	183-21	NUT-Terminal Cond. Lead	2				
62	183-32-990	NUT-Hex. 1/2 -20 (Str. Pulley)	1				
63	69-64	NIPPLE-Muffler	1				
64	183-37	NUT-Lock	1				
65	183-29-500	NUT	3				

Ref. No.	Part No.	Description	Qty.	Ref. No.	Part No.	Description	Qty.
125	291-3-990	VALVE-Intake (Std.)	1	129	20-59-990	WASHER-Thrust (Crankshaft)	1
	292-13-990	VALVE-Intake (.010)	1	130	304-25	WASHER-Lock	2
	292-3	VALVE-Intake	1	131	304-290	WASHER-Terminal	1
126	107-34	VANE-Air Governor	1	132	2-223	Cup-Air Cleaner	1
127	304-90	WASHER-"C" Valve Keeper	2	133	307-124-500	WIRE ASS'Y-Shorting	1
128	304-622	WASHER-Starter Cup	1	134	304-134	WASHER-Control Knob	1

RECOIL STARTER 265-279-500 Type B



RECOIL STARTER 265-28-500 Type A



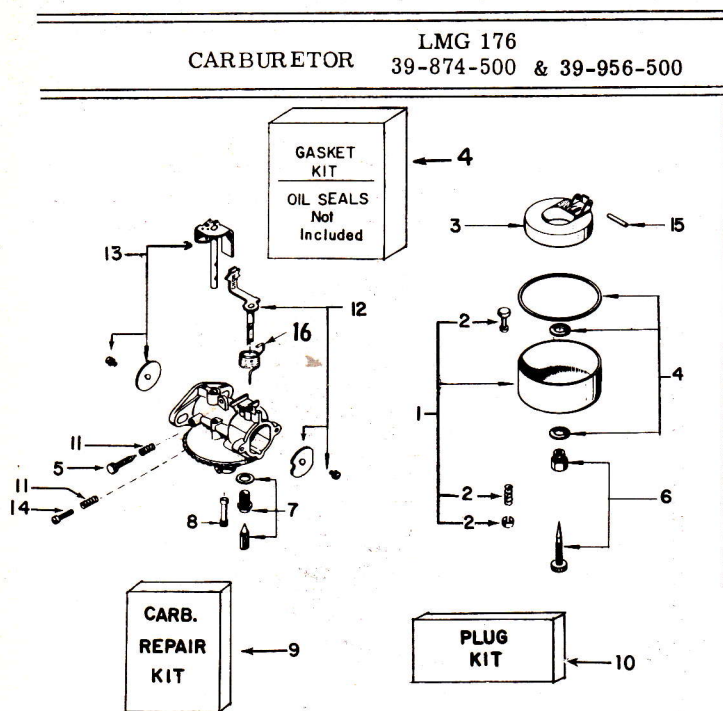
Ref. No.	Part Number	Description	Qty.	Ref. No.	Part Number	Description	Qty.
1	265-277	CUP-Starter	1	1	157-2	ACTUATOR	1
2	157-505	DOG-Starter	3	2	265-10	CUP-Starter	1
3	121-6-500	HANDLE-Starting	1	3	121-6	HANDLE	1
4	124-210-500	HOUSING ASS'Y	1	4	124-6-500	HOUSING-Incl. Recoil Spring	1
5	219-185-500	PULLEY ASS'Y	1	5	183-25-500	NUT & L'W ASS'Y	4
6	136-141	REINFORCEMENT	1	6	157-129-500	PAWL & PIN ASS'Y	1
7	232-211	RETAINER-Dog	1	7	219-28-500	PULLEY ASS'Y	1
* 8	246-7	ROPE	1	8	232-147	RING-Retaining	1
9	258-1103	SCREW	1	9	232-35	RING-Retaining	1
10	263-456	SPRING-Brake	1	10	246-7	ROPE	1
11	265-278-500	SPRING & CUP ASS'Y	1	11	136-2	INSERT-Handle	1
12	263-455	SPRING-Dog	3	12	258-191	SCREW-Pan Head	4
* Required Length Rope Can Be Cut From Bulk 150' Roll Part No. 246-38				13	263-133	SPRING-Actuator	1
13	203-21	PIN- FLYWHEEL	1	14	263-79	SPRING-Recoil	1
14	304-132	WASHER- CUP-Starter	1	15	304-320	WASHER	1

GENERAL SPECIFICATIONS

Bore ----- 2-15/32
 Stroke ----- 2-1/8
 Cubic Inch Displacement ----- 10.2
 Spark Plug Gap ----- .025
 Carburetion ----- Float
 Float Setting ----- 5/32"

Point Setting ----- .018
 Oil Capacity ----- 1-1/4 Pt.
 Block Construction ----- Clintalloy
 (Cast Iron)
 Bearing Flywheel End ----- Bronze
 Bearing P. T. O. End ----- Bronze

CARBURETOR



Ref. No.	Part No.	Description	Qty
1.	25-16-500	BOWL & DRAIN ASS'Y	1
2.	39-909	DRAIN ASS'Y	1
3.	82-2-500	FLOAT & LEVER ASS'Y	1
4.	* 39-928	GASKET KIT	1
5.	* 181-2	NEEDLE-Idle Adj.	1
6.	* 181-5-500	NEEDLE-Power Adj.	1
7.	* 293-30-500	NEEDLE & SEAT ASS'Y	1
8.	**182-37	NOZZLE	1
9.	39-910	REPAIR KIT	1
10.	39-938	PLUG KIT	1
11.	263-82	SPRING-Idle Needle & Throttle Stop Screw	2
12.	6-446	CHOKE SHAFT KIT	1
13.	6-452	THROTTLE SHAFT KIT	1
	6-496	THROTTLE SHAFT KIT	
14.	258-60	SCREW-Throttle Stop	1
15.	* 6-195	SHAFT-Float Hinge	1
16.	263-165	SPRING-Choke Return	1
* Indicates Parts In Repair Kit			

** If Original Main Nozzle was Removed
Replace With Service Nozzle Only