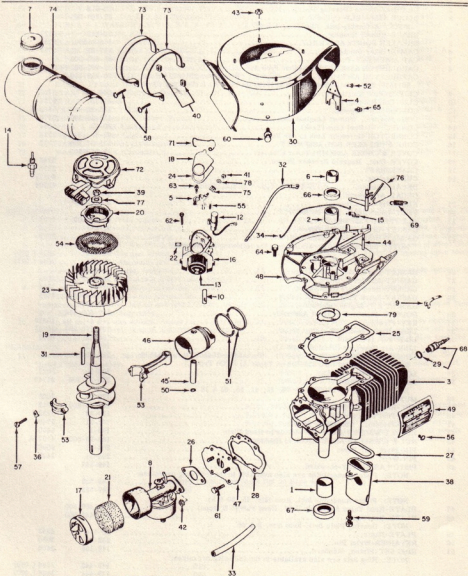


Clinton BASIC PARTS LIST

501-0000-000

FIG. SECTION II DIVISION 1902
501-0000-000
BASIC PARTS LIST
REVISED APRIL, 1963



CLINTON ENGINES CORPORATION

MAQUOKETA, IOWA

Printed in U.S.A.

501-0000-000 BASIC PARTS LIST

There are 3 basic types of the 501-0000-000 covered by this Basic Parts List. Type Letter on Name Plate will identify type.

Item No.	Part Description	IBM No.	Part No.	Qty.
1	BEARING-Main Sleeve (Block Assembly).....	20-50	9016	1
2	BEARING-Sleeve (Bearing Plate).....	20-216		1
3	BLOCK ASSEMBLY-Cylinder.....	22-767-500		1
	NOTE: Assembly Incl. Item Nos. 1 & 67			
4	BRACE-Blower Housing.....	26-142	2127	1
5	BREAKER POINTS ASSEMBLY.....	135-6-500	5735	1
6	CAM-Breaker Points.....	157-29	5751	1
7	CAP ASSEMBLY-Fuel.....	45-395-500		1
8	CARBURETOR ASSEMBLY-Used on Type A.....	39-767-500		1
	CARBURETOR ASSEMBLY-Used on Type B (Serial No. 2014083 thru	39-813-500		1
	2014538; Serial No. 2014742 thru 2015893 on Type A) & (On Type C)			
9	CLIP-Ignition Shorting.....	266-38	3409	1
10	CLIP-Coil Holding.....	81-20	5734	1
12	CONDENSER-Magneto.....	135-29-990	5589-A	1
13	COIL-Magneto, Without Laminations.....	135-13-990	5770	1
14	CONNECTOR-Fuel Line (Tank).....	69-25	5054	1
15	CONNECTOR-Governor Link to Air Vane.....	69-4	2226	1
16	CORE & BREAKER BOX ASSEMBLY.....	135-37-500	5732	1
17	COVER & CHOKE ASSEMBLY-Air Cleaner.....	45-378-500		1
18	COVER-Dust, Magneto Breaker Points.....	46-15	5743	1
19	CRANKSHAFT.....	46-35	2370-1	1
20	CUP-Starting.....	265-10	90871	1
	DECAL-Caution.....	58-376	92104	1
	DECAL-Arrowhead.....	58-449		1
21	ELEMENT-Air Cleaner.....	2-151-990		1
22	FELT-Lubrication, Cam Follower.....	94-189	5742	1
23	FLYWHEEL ASSEMBLY.....	83-12-500	5753-A	1
24	GASKET-Breaker Points Cover.....	94-241	5744	1
25	GASKET-Bearing Plate (Standard, .030 Thick).....	94-105	2039	1
	NOTE: Gaskets are also available in the following thicknesses:			
025.....	93-105	2039 (.025)	1
035.....	95-105	2039 (.035)	1
26	GASKET-Carburetor to Reed Plate.....	94-463		1
27	GASKET-Muffler to Block.....	94-73	2069	1
28	GASKET-Reed Plate to Block.....	94-87	2344	1
29	GASKET-Spark Plug.....	94-92-990	3115	1
30	GASKET KIT-Engine Overhaul.....	149-590		1
31	HOUSING-Blower & Bracket Assembly.....	259-600-500		1
32	KEY-Flywheel.....	148-4	10339	1
33	LEAD-High Tension Magneto.....	307-195-990	90762	1
34	LINE-Fuel (Flexible).....	158-25	6316	1
	LINK-Air Governor (Used on Type A).....	159-137		1
	LINK-Air Governor (Used on Type B) (Serial No. 2014083 thru 2014538,	159-166		1
	Serial No. 2014742 thru 2015893 on Types A) & (On Type C)			
36	LOCK-Connecting Rod Cap.....	304-10	2027	2
37	MAGNETO ASSEMBLY.....	268-17-500	91740	1
	Incl. Item Nos. 4, 10, 12, 13, 16, 22, 41, 55, 63 & 78			
38	MUFFLER.....	170-15	2082	1
39	NUT-Hexagon 1/2 (Starter Cup).....	183-68-990	5942	1
40	NUT-Fuel Tank Straps.....	183-53	3253	2
41	NUT-Terminal, Condenser Lead.....	183-21	5740	1
42	NUT & L'WASHER ASS'Y-Carburetor to Reed Plate.....	183-1	5450	2
43	NUT & L'WASHER ASS'Y-Recoil to Housing.....	183-25-500	4107-A	4
44	PIN-Pivot, Air Vane.....	203-91	90982	1
45	PIN-Wrist.....	203-61	2428	1
46	PISTON ASSEMBLY-Standard.....	149-547		1
	NOTE: Piston Assemblies are also available in the following oversizes:			
010.....	149-552		1
020.....	149-553		1
47	PLATE-Reed Valve Assembly (Incl. Reed Valves & Stops).....	215-458-500		1
48	PLATE-Bearing.....	215-461-500		1
	NOTE: Bearing Plate Incl. Item Nos. 2 & 66			
49	PLATE-Name.....	58-114	2363	2
50	RETAINER-Wrist Pin.....	232-40	3030	2
51	RING SET-Piston, Standard.....	149-108	2486	1
	NOTE: Ring Sets are also available in the following oversizes:			
010.....	149-443	2486 (.010)	1
020.....	149-444	2486 (.020)	1
52	RIVET-Tubular (Brace to Housing).....	244-21	5460	3
53	ROD ASSEMBLY-Connecting.....	245-00-500	2422-A	1
54	SCREEN-Rotating.....	257-30	90872	1
55	SCREW-R, H, S, T. 8-32 x 4/5 (Condenser to Plate).....	258-299	5741	1
56	SCREW-H, H, S, T. 8-32 x 3/8 (Name Plate to Block).....	258-81	5644	2

Item No.	Parts Description	IBM No.	Part No.	Qty.
57	SCREW-H. H. S. T. 10-24 x 3/4 (Connecting Rod Cap).....	258-29	5429	2
58	SCREW-R. H. M. 10-24 x 3/4 (Fuel Tank Straps).....	258-185-500	3238-A	2
59	SCREW & L'WASHER ASS'Y-R. H. M. 1/4-20 x 3/4 (Muffler to Block).....	258-263-500	5679-G	2
60	SCREW & L'WASHER ASS'Y-H. H. C. 1/4-20 x 1/2 (Hsg. to Bearing Plate).....	258-280-500	3205-G	4
61	SCREW & L'WASHER ASS'Y-H. H. C. 1/4-20 x 5/8 (Reed Plate to Block).....	258-232-500	3632-G	4
62	SCREW & L'WASHER ASS'Y-R. H. S. T. 10-24 x 1 (Magnetto PH. to Brg. Plate).....	258-108-500	5682-A	2
63	SCREW & L'WASHER ASS'Y-Breaker Points to Breaker Box.....	258-297-500	5737	1
64	SCREW-H. H. C. 1/4-20 x 3/4 (Bearing Plate to Block).....	258-43	5446	6
65	SCREW & L'WASHER ASS'Y-R. H. S. T. #8-32 x 1/2 (Housing to Head).....	258-40-500	5443-A	3
66	SEAL-Oil (Bearing Plate).....	94-175	7254	1
67	SEAL-Oil (Power Take-Off).....	94-172	4429	1
68	SPARK PLUG & GASKET ASSEMBLY (J-12-J).....	267-18-500	90617-A	1
69	SPRING-Air Governor (Used on Type A).....	263-5	2448	1
	SPRING-Air Governor (Used on Type B) (Serial No. 2014083 thru 2014536;... Serial No. 2014742 thru 2015893 Types A) & (On Type C)	263-345		1
71	SPRING-Breaker Box Cover.....	263-10	5745	1
72	STARTER-Recoil (Refer to Sec. III, Div. II, Page 12).....	265-28-500	13515	1
73	STRAP-Fuel Tank.....	26-168	90455	2
74	TANK ASSEMBLY-Fuel.....	277-3-500	7461-A	1
75	TERMINAL-Jamite Breaker Points.....	307-230	5738	1
76	VANE & LEVER ASSEMBLY-Air Governor.....	107-28	90983	1
77	WASHER-Starter Cup.....	304-5	5879	1
78	WASHER-Terminal Condenser Lead.....	304-290	5739	1
79	WASHER-Thrust (Crankshaft).....	304-149	2026	1

CARBURETOR SERVICE PROCEDURE

DISASSEMBLY:

1. Remove Carburetor from engine.
2. Remove choke assembly and air filter.
3. Remove Adjusting Screw and Spring.
4. Remove Bolt Lock Nut, Washer & Upper Body Gasket.
5. Remove Body Assembly and Lower Cover Gasket.
6. Remove Bolt and Jet Assembly and Bolt Gasket.
7. Remove Bowl (Bowl Drain) Assembly.
8. Remove Float Pin, Float Ass'y & Bowl Ring Gasket.
9. Remove Pin, Spring and Gasoline Intake Needle.
CAUTION: Needle Seat is not removable; when replacement is needed, install new Bowl Cover, Needle Pin, Spring and Seat Assembly
10. Clean all parts in clean solvent. Blow off all parts with compressed air. Replace worn and damaged parts. Always use new gaskets.

REASSEMBLY:

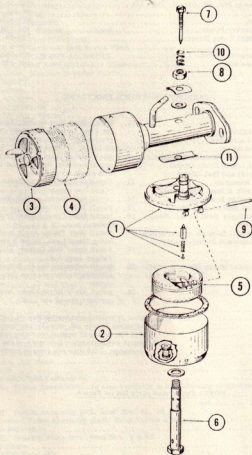
11. Install Intake Needle, Spring and Pin in Needle Seat of Bowl Cover Assembly.

12. Install Bowl Ring Gasket, Float Ass'y and Float Pin. Set Float Level. With Bowl Cover inverted, Float resting lightly against intake Needle Pin, there should be 13/64" (Plus or minus 1/32") clearance between outer edge of Bowl Cover and free end of Float (Side opposite Needle Seat); Adjust by bending lip of float with small screwdriver.
13. Install Bowl Cover with Drain Assembly opposite side of gas line connection.
14. Install Bolt Gasket on Bolt Assembly.
15. Install Bolt & Jet Ass'y.
16. Install Bowl Cover Gasket resting in groove of Bowl; Cover.
17. Install Body Flange Ass'y (with gas line connection facing toward you, choke & air intake on left hand side)
18. Install upper Bolt Gasket, Washer & Bolt Lock Nut. Tighten Lock Nut.
19. Install Adjusting Needle & Spring, if tight. Set adjusting needle one turn open from seat to start engine
20. Install Air Filter & Choke Ass'y (Choke shutter opener at top of air intake.)

After rebuilding and installation on engine is completed and Adjusting Needle set, one (1) turn open from seat start engine. With the engine at normal operating temperature, check engine performance. If mixture is too rich, adjust needle clockwise, 1/16 turn at a time to correct this condition.

NOTE: Carburetor parts list on Page 4.

1. Bowl Cover, Needle, Pin, Spring & Seat Ass'y	45-370-500	1
2. Bowl & Drain Assembly	25-37-500	1
3. Cover & Choke Assembly	45-378-500	1
4. Element Air Cleaner	2-151-990	1
5. Float & Lever Assembly	30-584-500	1
Gasket Kit	149-513	1
6. Jet & Bolt Assembly	182-55-500	1
7. Needle-Fuel Adjusting	181-86	1
8. Nut-Bolt	183-239	1
9. Pin-Float	203-77	1
10. Spring-Adjusting Needle	263-332	1
11. Washer-Gasket Retainer	304-570	1
12. Washer-Throttle Adj. (Not Illus.)	304-598	1



Clinton MODEL VARIATIONS

501-0000-000

FILE SEC. II DIVISION 1962
501-0000-000
MODEL VARIATIONS
REVISED APRIL 1964
SUPERSEDES APRIL 1963

The adaptation of Clinton Engines to a wide variety of uses, results in what is known as Model Variations. Following is a list of Models produced to date. Opposite each Engine Model listed are the Part Numbers required in addition to or in place of standard parts. Refer to Basic Parts List for parts not listed in the Model Variations.

See Page C of this Manual on "How to Identify your Clinton Engine."

MODELS	CRANKSHAFT Ref. to Sec. IV Div. B	NOTES	MISCELLANEOUS INFORMATION	MODELS	CRANKSHAFT Ref. to Sec. IV Div. B	NOTES	MISCELLANEOUS INFORMATION
501-0000-001		1		501-0000-042			STANDARD ENGINE REFER TO BASIC PARTS LIST
501-0000-002		1					
501-0000-003		1, 2, 3, 4, 6		501-0000-043		2, 3, 4, 5, 25	
501-0000-004		10		501-0000-044		3, 4, 6, 11	(170-15-500) Muffler
501-0000-005		3, 4, 5, 8, 9		501-0000-045	46-773	1, 21, 26	
501-0000-006		4, 5, 7, 9		501-0000-046		2, 3, 4, 5, 8	
501-0000-007	46-820	10		501-0000-047		1, 2, 9, 14	
501-0000-008	46-820			501-0000-048		1, 2, 21	
501-0000-009		1, 10		501-0000-049		1	
501-0000-010		1, 3, 4, 5		501-0000-050	46-820		
501-0000-011		1		501-0000-051	46-820	3, 4, 5	
501-0000-012		1, 10		501-0000-052	46-820	1, 3, 4, 5	
501-0000-013		1, 2, 3, 4, 5		501-0000-053		2, 9, 21	
501-0000-014		1, 10		501-0000-054	46-773	1, 3, 4, 5, 14, 20, 26	
501-0000-015		1		501-0000-055	46-773	1, 21, 26	
501-0000-016		1, 10		501-0000-056	46-773	3, 4, 5, 14, 20, 27	
501-0000-017	46-180	2, 3, 4, 6 8		501-0000-057			STANDARD ENGINE REFER TO BASIC PARTS LIST
501-0000-018		2, 3, 4, 6, 11		501-0000-058		2	
501-0000-019	46-172	12		501-0000-059		20	
501-0000-020	46-172			501-0000-060		20, 28	
501-0000-021	46-172	10		501-0000-061		1, 10	
501-0000-022	46-177	10		501-0000-062	46-827	8	
501-0000-023		2		501-0000-063		3, 4, 5	
501-0000-024	46-824	1, 3, 4, 13, 14, 16		501-0000-064		1, 10	
501-0000-025	46-824	1, 3, 4, 13, 14, 16		501-0000-065		1	
501-0000-026	46-177			501-0000-066	46-172	10	
501-0000-027	46-180	4, 5, 7, 9, 22		501-0000-067		3, 4, 6, 29	
501-0000-028			STANDARD ENGINE REFER TO BASIC PARTS LIST	501-0000-068		3, 4, 5, 25	
501-0000-029	46-180	5, 9, 17, 18, 19, 20, 21, 22, 23, 30		501-0000-069		1, 10	
501-0000-030			STANDARD ENGINE REFER TO BASIC PARTS LIST	501-0000-070		3, 4, 5, 9, 20, 21	
501-0000-031		10		501-0000-071		3, 4, 5, 25	
501-0000-032		1, 2, 24		501-0000-072		3, 4, 5, 9, 20, 21	
501-0000-033		1, 2		501-0000-073		1, 3, 4, 5, 20	
501-0000-034		2, 11		501-0000-074		5	
501-0000-035		1, 2, 21		501-0000-075		1, 10	
501-0000-036		1		501-0000-076	46-827	3, 4, 5, 8	
501-0000-037		1, 2, 21		501-0000-077		1	
501-0000-038		1, 2, 21		501-0000-078		1, 10	
501-0000-039		2, 3, 4, 5		501-0000-079		1	
501-0000-040	46-180	4, 5, 7, 9, 20, 22		501-0000-080			STANDARD ENGINE REFER TO BASIC PARTS LIST
501-0000-041		10		501-0000-081		3, 4, 5	
				501-0000-082		1, 3, 4, 5, 9	
				501-0000-083	46-835	3, 4, 5	
				501-0000-084		10, 29	
				501-0000-085		1	

MODELS	CRANKSHAFT REL. TO SEC. IV DR. B	NOTES	MISCELLANEOUS INFORMATION	MODELS	CRANKSHAFT REL. TO SEC. IV DR. B	NOTES	MISCELLANEOUS INFORMATION
501-0000-086	1			501-0000-111	46-773	3, 4, 5, 9, 14, 27, 32	
501-0000-087	3, 4, 5, 25			501-0000-112	46-773	1, 2, 3, 4, 5, 9, 14, 32	
501-0000-088	1, 3, 4, 5, 25			501-2000-113	46-773	3, 4, 9, 14, 16, 27	
501-0000-089	1, 2, 3, 4, 5, 21			501-0000-114		1, 2, 3, 4, 5	
501-1000-090	1, 3, 4, 6			501-0000-115		2, 3, 4, 5, 21	
501-1000-091	1, 3, 4, 8			501-0000-116		3, 4, 5, 8	
501-0000-092	1, 2			501-0000-117		1, 2, 3, 4, 5	
501-0000-093	5, 11, 18, 19, 21, 22, 31			501-0000-118	46-181	2, 3, 4, 5, 14	
501-1000-094	46-176	10		501-0000-119	46-180	5, 9, 13, 17, 18, 19, 21, 22, 31, 33	
501-0000-095 (Type C)		2, 9, 21		501-0000-120	46-180	19, 22, 33	
501-0000-095 (Type D)		2, 3, 4, 5, 9, 21		501-0000-121		1, 3, 4, 5	
501-0000-096		2, 3, 4, 5, 9, 21		501-1000-122		1, 3, 4, 6	
501-0000-097		1		501-0000-123	46-180	2, 3, 4, 5, 8	
501-1000-098		3, 4, 6, 25		501-0000-123		3, 25	
501-0000-099	46-820	3, 4, 5		501-0000-126		1, 3, 14, 26	
501-1000-100	46-820	3, 4, 8		501-1000-127		3, 4, 6, 8, 11	
501-1000-101	46-180	2, 3, 4, 6, 8		501-0000-128		3, 9, 14	
501-1000-102		1, 3, 4, 6		501-2000-129		3, 24, 26, 33	
501-0000-103		2, 3, 4, 5, 9, 21		501-0000-130		1, 3, 9, 26	
501-0000-104	46-773	1, 3, 4, 5, 21, 28		501-0000-131		1, 3	
501-0000-105	46-773	1, 3, 4, 5, 9, 20, 26		501-0000-132		1, 3, 26	
501-0000-106	46-773	3, 4, 5, 9, 20, 27		501-0000-133		3, 25	
501-0000-107		1, 3, 4, 5		501-1000-134		3, 12	
501-1000-108		1, 3, 4, 6					
501-0000-109		1, 2, 3, 4, 5, 21					
501-2000-110	46-773	3, 4, 9, 16, 27, 32					

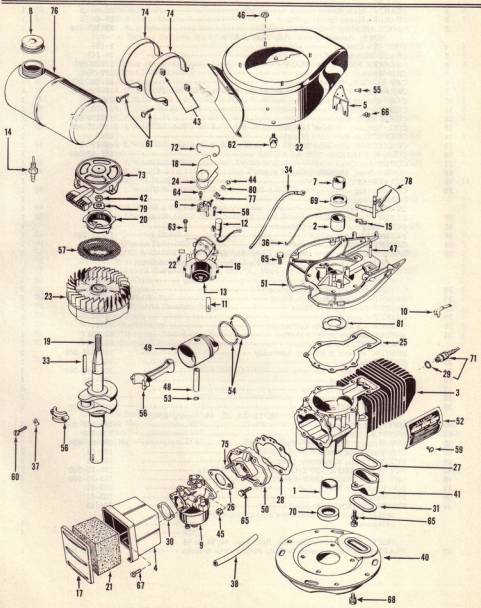
- Note 1 Use 1-28 Flange (Engine Adaptor), and 258-281-500 Screw & L'Washer (4).
- Note 2 Use 170-128-500 Muffler, 24-91 Stud (Muffler Mounting) (2), 283-29-500 Nut & L'Washer (2), 26-561 Bracket (Muffler Mounting), 258-43 Screw (Bracket to Muffler), 81-10 Clamp (Hi-Tension Lead), and 258-81 Screw (Clamp to Block). The following parts are available individually to service the 170-128-500 Muffler, 45-59 Cover (Inspection Plate), 94-1 Gasket (Exhaust Cover to Body), 258-182-500 Screw & L'Washer (Cover to Body) (2), 258-81-500 Screw & L'Washer (Inspection Plate to Body) (2), (4), Gasket (Carb.), 39-755-990 Carburetor, 69-24 Connector (Elbow), 215-483-500 Plate Ass'y (Bearing), 263-5 Spring (Speed Regulating), 304-141 Washer (Spring Tension), L'Washer (Lever to Bearing Plate), 258-199 Screw (Throttle Lever Stop), 183-26 Nut, and 159-17 Link (Air Vane).
- Note 3 Use 215-111-500 Plate Ass'y (Reed), 258-284-500 Screw & L'Washer (Reed Plate to Block) (4), Gasket (Carb.), 39-755-990 Carburetor, 69-24 Connector (Elbow), 215-483-500 Plate Ass'y (Bearing), 263-5 Spring (Speed Regulating), 304-141 Washer (Spring Tension), L'Washer (Lever to Bearing Plate), 258-199 Screw (Throttle Lever Stop), 183-26 Nut, and 159-17 Link (Air Vane).
- Note 4 Use 2-138 Body (Air Cleaner), 45-338 Cover, 2-141-990 Element, 258-131 Screw (Body to Carb.) (2), 94-13 Gasket (Air Cleaner to Carb.).
- Note 5 Use 259-132-500 Housing (Blower).
- Note 6 Use 259-654-500 Housing Ass'y (Blower), 219-17 Pulley (Starting), 257-25 Screen, 304-132 Washer (Starter Pulley), and 246-13-500 Starter Rope.
- Note 7 Same as Note 3. However, use 304-586 Plain Washer in place of 304-141 Wave Washer.
- Note 8 Use 83-10-500 Flywheel.
- Note 9 Use 293-37 Valve (Fuel Shut-Off).
- Note 10 Use 259-592-500 Housing Ass'y (Blower), 257-25 Screen, 219-17 Pulley, and 304-132 Washer.
- Note 11 Use 45-68-500 Cover (Spark Plug-Shorting).
- Note 12 Use 219-17 Pulley (Starting), 257-25 Screen, 304-132 Washer, and 246-13-500 Starter Rope.
- Note 13 Use 45-66 Cover (Spark Plug).
- Note 14 Use 307-120-500 Wire Ass'y (Shorting), 183-26 Nut, 258-81 Screw (Wire to Grommet), and 70-7 Grommet.
- Note 15 Use 259-137-500 Housing (Blower).
- Note 16 Use 259-362-500 Housing Ass'y (Blower), 265-206-500 Impulse Starter, 265-106-500 Cup, and 183-32 Nut (Flywheel).
- Note 17 Use 245-110-500 Rod Ass'y (Connecting).
- Note 18 Use 94-960 Gasket (Reed Plate to Block), 215-444-500 Plate Ass'y (Reed), 94-259 Gasket (Reed Plate to Induction Bracket), 26-640 Bracket (Induction), 24-91 Stud (Carb. Mounting) (2), 94-30 Gasket (Carb.), 183-29-500 Nut Ass'y (Carb. Mounting) (2), and 39-828-500 Carburetor.

- Note 19 Use 215-463-500 Plate Ass'y (Bearing), 157-106-500 Lever Ass'y (Throttle Control), 258-107 Screw (to Loom Nut), 258-247-500 Screw & L'Washer (Lever to Plate), 258-199 Screw, 183-26 Nut, 304-586 Washer (Between Throttle Lever & Bearing Plate), 159-157 Link (Air Vane), and 263-5 Spring (Speed Regulating).
- Note 20 Use 259-262-500 Shroud Ass'y (Decorative) and 258-232-500 Screw & L'Washer (Blower Housing to Bearing Plate) (4).
- Note 21 Use 266-4 Switch, 307-125-500 Wire Ass'y (Shorting), and 183-26 Nut (Shorting Wire to Stator Ass'y).
- Note 22 Use 170-81 Muffler, 24-91 Stud (Muffler Mounting) (2), 183-29-500 Nut & L'Washer (2).
- Note 23 Use 94-13 Gasket (Air Cleaner to Carb.), 2-138 Body (Air Cleaner), 2-141-990 Element, 45-338 Cover (Air Cleaner), 304-562 Washer, 258-710 Screw (Air Cleaner to Carb.) (2), and 304-28 L'Washer (2).
- Note 24 Use 265-206-500 Impulse Starter, 265-106-500 Cup (Starter), 183-32 Nut (Flywheel), and 259-656-500 Housing Ass'y (Blower).
- Note 25 Use 307-31-500 Cable Ass'y (Remote Control).
- Note 26 Use 170-129-500 Muffler, 24-91 Stud (Muffler Mounting) (2), 183-29-500 Nut & L'Washer (2), 26-560 Bracket (Muffler Mounting), and 258-246-500 Screw & L'Washer (Bracket to Muffler). The following parts are available to service the Muffler, 45-59 Cover (Inspection Plate), 94-1 Gasket (Exhaust Cover to Body), 258-162-500 Screw & L'Washer (Cover to Body) (2), 258-81-500 Screw & L'Washer (Inspection Plate to Body) (2).
- Note 27 Use 94-569 Muffler Kit that consists of 81-10 Clamp, 258-81 Screw, 94-76 Gasket (2), 170-38-500 Muffler, 170-39-500 Muffler, 169-8-500 Manifold, and 81-2-500 Clamp (2).
- Note 28 Use 45-344-500 Cap & Gauge Ass'y (Fuel).
- Note 29 Use 58-8 Decal (Warning).
- Note 30 This engine is subject to warranty consideration when operated with Governor at speeds up to 4500 R. P. M.
- Note 31 Use 94-13 Gasket (Air Cleaner to Carb.), 2-144 Body (Air Cleaner), 2-140-990 Element, 45-337 Cover (Air Cleaner), 304-562 Washer, and 258-198-500 Screw & L'Washer (Cleaner to Carb.) (2).
- Note 32 Use 259-371-500 Shroud, 258-232-500 Screw & L'Washer (Shroud & Housing to Bearing Plate) (4), and 304-94 Washer (Shroud Brackets to Bearing Plate) (2).
- Note 33 Use 259-683-500 Shroud.

Clinton BASIC PARTS LIST

501-0001-000

FILE SEC. II DIVISION 1962
501-0001-000
BASIC PARTS LIST
ISSUED APRIL 1964



CLINTON ENGINES CORPORATION
MAQUOKETA, IOWA

Printed in U.S.A.

501-0001-000 BASIC PARTS LIST

Ref. No.	Description	Part No.	Qty.
1	BEARING-Main Sleeve (Block Assembly) -----	20-50	1
2	BEARING-Sleeve (Bearing Plate) -----	20-40	1
3	BLOCK ASSEMBLY-Cylinder -----	22-767-500	1
	NOTE: Assembly Incl. Ref. Nos. 1 & 70		
4	BODY-Air Cleaner -----	2-180	1
5	BRACE-Blower Housing -----	26-142	1
6	BREAKER POINTS ASSEMBLY -----	135-6-500	1
7	CAM-Breaker Points -----	157-29	1
8	CAP ASSEMBLY-Fuel -----	45-395-500	1
9	CARBURETOR ASSEMBLY- Refer to Sec. III, Div. A for Ind. Parts	39-876-990	1
10	CLIP-Ignition Shorting -----	266-28	1
11	CLIP-Coil Holding -----	81-20	1
12	CONDENSER-Magneto -----	135-29-990	1
13	COIL-Magneto, Without Laminations -----	135-13-990	1
14	CONNECTOR-Fuel Line (Tank) -----	69-6	1
15	CONNECTOR-Governor Link to Air Vane -----	69-4	1
16	CORE & BREAKER BOX ASSEMBLY -----	135-37-500	1
17	COVER-Air Cleaner -----	45-391	1
18	COVER-Dust, Magneto Breaker Points -----	45-15	1
19	CRANKSHAFT -----	46-35	1
20	CUP-Starting -----	265-10	1
	DECAL- Caution -----	58-376	1
	DECAL-Arrowhead -----	58-450	1
21	ELEMENT-Air Cleaner -----	2-171	1
22	FELT-Lubrication, Cam Follower -----	94-189	1
23	FLYWHEEL ASSEMBLY -----	83-12-500	1
24	GASKET-Breaker Points Cover -----	94-241	1
25	GASKET-Bearing Plate (Standard (.030) Thick) -----	94-105	1
	NOTE: Gaskets are also available in the following thicknesses:		
	.025 -----	93-105	1
	.035 -----	95-105	1
26	GASKET-Carburetor to Reed Plate -----	94-30	1
27	GASKET-Muffler Adaptor to Block -----	94-73	1
28	GASKET-Reed Plate to Block -----	94-87	1
29	GASKET-Spark Plug -----	94-92-990	1
30	GASKET-Air Cleaner to Carburetor -----	94-13	1
31	GASKET-Muffler Neck to Muffler -----	94-951	1
	GASKET KIT-Engine Overhaul -----	94-594	1
32	HOUSING-Blower & Bracket Assembly -----	259-132-500	1
33	KEY-Flywheel -----	148-4	1
34	LEAD-High Tension Magneto -----	307-195-990	1
36	LINK-Air Governor -----	159-159	1
37	LOCK-Connecting Rod Cap -----	304-10	2
38	LINE-Fuel -----	158-25	1
39	MAGNETO ASSEMBLY -----	268-17-500	1
	Includes Ref. Nos. 5, 11, 12, 13, 16, 22, 44, 58, 64, & 80		
40	MUFFLER-Ass'y -----	170-142-500	1
41	MUFFLER NECK ADAPTOR -----	170-143	1
42	NUT-Hexagon 1/2 (Starter Cup) -----	183-68-990	1
43	NUT-Fuel Tank Straps -----	183-53	2
44	NUT-Terminal, Condenser Lead -----	183-21	1
45	NUT & L'WASHER ASS'Y-Carburetor to Reed Plate -----	183-29-500	2
46	NUT & L'WASHER ASS'Y-Recoil to Housing -----	183-25-500	4
47	PIN-Pivot, Air Vane -----	203-91	1
48	PIN-Wrist -----	203-61	1
49	PISTON ASSEMBLY-Standard -----	204-83	1
	NOTE: Piston Assemblies are also available in the following oversizes:		
	.010 -----	206-80	1
	.020 -----	207-73	1
50	NOTE: Piston Assembly Incl. Ref. Nos. 48, 53, & 54 PLATE-Reed Valve Assembly (Inc. Reed Valves & Stops) -----	215-111-500	1

Ref. No.	Description	Part No.	Qty.
51	PLATE-Bearing -----	215-461-500	1
52	NOTE: Bearing Plate Incl. Ref. Nos. 2 & 69 -----		
52	PLATE-Name -----	58-114	1
53	RETAINER-Wrist Pin -----	232-40	2
54	RING SET-Piston, Standard -----	233-114-500	1
	NOTE: Ring Sets are also available in the following oversizes: Refer to Service Bulletin No. 4 for Chrome Ring Set Information.		
	.010 -----	235-128-500	1
	.020 -----	237-128-500	1
55	RIVET-Tubular (Brace to Housing) -----	244-21	3
56	ROD ASSEMBLY-Connecting -----	245-110-500	1
57	SCREEN-Rotating -----	257-30	1
58	SCREW-R, H. S. T. 8-32 x 4/5 (Condenser to Plate)-----	258-299	1
59	SCREW-H, H. S. T. 8-32 x 3/8 (Name Plate to Block)-----	258-81	2
60	SCREW-H, H. S. T. 10-24 x 3/4 (Connecting Rod Cap) -----	258-29	2
61	SCREW-R, H. M. 10-24 x 3/4 (Fuel Tank Straps) -----	258-185-500	2
62	SCREW & L'WASHER ASS'Y-H. H. C. 1/4-20 x 1/2 (Hag. to Bearing Plate) -----	258-280-500	4
63	SCREW & L'WASHER ASS'Y-R, H. S. T. 10-24 x 1 (Magneto Pit. to Brg. Plate) -----	258-108-500	2
64	SCREW & L'WASHER ASS'Y-Breaker Points to Breaker Box -----	258-297-500	1
65	SCREW-H, H. C. 1/4-20 x 3/4 (6 Bearing Plate to Block) (4 Reed Plate to Block) (2 Muffler Adaptor to Block) -----	258-43	12
66	SCREW & L'WASHER ASS'Y-R, H. S. T. #8-32 x 1/2 (Housing to Head) -----	258-40-500	3
67	SCREW-H, H. #8-32 x 9/16 (Carburetor to Air Cleaner)-----	258-974	2
68	SCREW & L'WASHER ASS'Y-H, H. 5/16-18 x 7/8 (Muffler Flange to Block) -----	258-281-500	
69	SEAL-Oil (Bearing Plate) -----	94-175	1
70	SEAL-Oil (Power Take-Off) -----	94-172	1
71	SPARK PLUG & GASKET ASSEMBLY (J-12-J)-----	267-44-500	1
72	SPRING-Breaker Box Cover -----	263-10	1
73	STARTER-Recoil (Refer to Sec. III, Div. H, Page 12) -----	265-28-500	1
74	STRAP-Fuel Tank -----	26-168	2
75	STUD-Reed Plate -----	24-18	2
76	TANK ASSEMBLY-Fuel -----	277-3-500	1
77	TERMINAL-Jamtitte Breaker Points -----	307-230	1
78	VANE-Governor -----	107-28	1
79	WASHER-Starter Cup -----	304-5	1
80	WASHER-Terminal Condenser Lead -----	304-290	1
81	WASHER-Thrust (Crankshaft) -----	304-149	1

SPECIFICATIONS

Bore -----	2 1/8"	Point Setting -----	.018
Stroke -----	1 5/8"		.021
Cubic Inch Displacement -----	5.76	Horsepower Rating -----	2 3/4
Spark Plug Gap -----	.028	Block Construction -----	Aluminum With Cast Iron Cylinder Sleeve
Carburetion -----	.033		Bronze
Float Setting -----	5/32"	Bearing Flywheel End -----	Bronze
		Bearing P. T. O. End -----	Bronze

39-876-500 (LMB-103) Carburetor

Item No.	Description	Part No.	Qty.
1	Body Assembly - Not Available.....		
2	Bowl Assembly - Incl. Item 20.....	25-41-500	1
3	Float & Lever Assembly.....	82-22-500	1
4	Gasket - Bowl.....	94-528	1
5	Gasket - Bowl Nut.....	94-227	2
6	Gasket - Float Valve Seat.....	94-229	1
7	Screw - Bowl.....	258-972	1
8	Needle - Idle.....	181-2	1
9	Needle & Seat Ass'y. - Incl. Item 6.....	293-76-500	1
13	Screw & L'Washer - Valve Attaching.....	258-931-500	2
14	Shaft - Float Hinge.....	6-195	1
15	Shaft & Lever Assembly - Choke.....	6-443-500	1
16	Shaft & Lever Assembly - Throttle.....	6-402-500	1
17	Spring - Throttle Return (Not Illustrated)....	263-363	1
19	Spring - Compression.....	263-82	1
20	Stem Assembly - Bowl Drain.....	39-909	1
22	Valve - Choke.....	293-182	1
23	Valve - Throttle.....	293-171	1

