



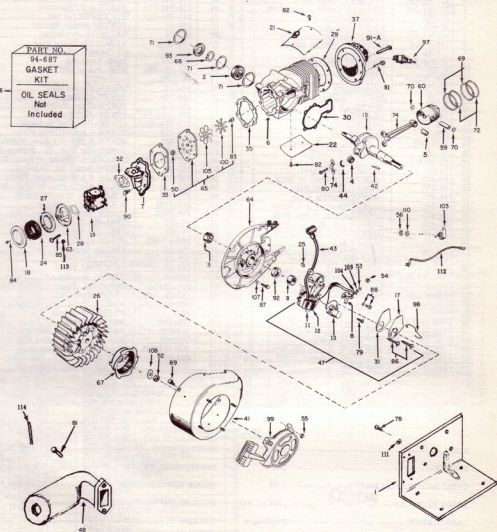
BASIC PARTS LIST

502-0308-000

SEC. II, DIVISION 1962

ISSUED JANUARY, 1971

PART NO.
94-687
GASKET
KIT
OIL SEALS
Not
Included



CLINTON ENGINES CORPORATION

MAQUOKETA, IOWA

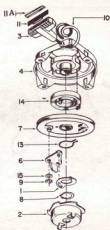
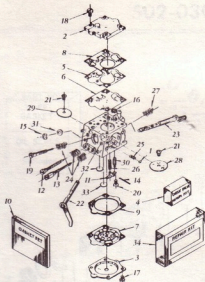
PRINTED IN U.S.A.

BASIC PARTS LIST

Ref. No.	Part No.	Description	Qty.	Ref. No.	Part No.	Description	Qty.
1	26-757	BASE-Engine Mfg.	1	60	204-95-500	PISTON ASSY-Incls. Nos. 59, 69, 70, 72	1
2	20-4	BEARING-Ball (Block)	1	63	215-544-500	PLATE ASSY-Air Clnr. Mfg.	1
3	20-198-990	BEARING-Needle (Brng. Plt.)	1	64	215-545-500	PLATE ASSY-Bearing	1
4	20-197-500	BEARING-Needle (Conn. Rod)	1	65	215-496-500	PLATE ASSY-Read	1
5	20-226	BEARING-Wrist Pin	1	67	265-10	PULLEY-Recoil Starter	1
6	22-856	BLOCK-Cylinder	1	68	232-73	RETAINER-Crankshaft	1
7	26-744-500	BRACKET-Induction Ass'y	1	69	148-49	RETAINER-Piston Ring	2
8	135-7-500	BRAKES-POINTS ASSY	1	70	232-164	RETAINER-Wrist Pin	2
9	157-29	CAM-Breaker	1	71	232-148	RING-Retaining	3
10	39-988-500	CARBURETOR ASSY	1	72	233-160-990	RING-Piston (Std.)	2
11	81-20	CLIP-Core	1	74	245-120	ROD ASSY	1
12	135-13-990	COIL ASSY	1	78	24-117	SCREW-Engine Mfg.	4
13	135-29-990	CONDENSER	1	79	258-299	SCREW-Condenser	1
17	45-15	COVER-Breaker Box	1	80	258-901	SCREW-Conn. Rod	2
18	45-5	COVER-Air Cleaner	1	81	258-1075	SCREW-Muffler Mfg.	2
19	46-921	CRANKSHAFT	1	82	258-936-500	SCREW-Deflector to Block	4
21	259-411	DEFLECTOR	1	83	258-516	SCREW-Read Valve to Plate	1
22	259-17	DEFLECTOR	1	84	258-883	SCREW & L/W-Air Clnr. Cover	1
24	2-33-500	ELEMENT-Air Cleaner	1	85	258-995	SCREW-Air Clnr. Plt. & Carb. Mfg. 2	2
25	94-189	FELT-Cam Wiper	1	86	258-108-500	SCREW & L/W-Mag. to Brng. Plt. 2	2
26	83-95-500	FLYWHEEL ASSY	1	87	258-43	SCREW-Brng. Plt. to Block	6
27	94-550	GASKET-Air Cleaner	2	88	258-297-500	SCREW & L/W-Breaker Points	1
28	94-622	GASKET-Air Clnr. to Carb.	1	89	258-280-500	SCREW ASSY-Hag. to Brng. Plt. 4	4
29	94-670	GASKET-Cylinder Head	1	90	258-834	SCREW-Ind. Brkt. to Block	4
30	94-671	GASKET-Bearing Plate	1	91	258-1056	SCREW-Head Cylinder	2
31	94-241	GASKET-Breaker Box Cover	1	91A	258-1056	SCREW-Head Cylinder	4
32	94-621	GASKET-Carb. to Ind. Brkt.	1	92	94-257	SEAL-Oil (Brng. Plt.)	1
33	94-438	GASKET-Ind. Brkt. to Reed Pit.	1	93	94-301	SEAL-Oil (Block)	1
35	94-380	GASKET-Read Pit. to Block	1	97	267-87-990	SPARK PLUG	1
36	94-687	GASKET KIT	1	98	263-10	SPRING-Breaker Cover	1
37	122-40	HEAD-Cylinder	1	99	265-28-500	STARTER-Recoil	1
41	259-82-500	HOUSING ASSY-Blower	1	100	293-97	STOP-Read Valve	1
42	148-4	KEY-Flywheel	1	103	266-53	SWITCH-Shorting	1
43	307-301-500	LEAD-Magneto HI Tension	1	104	307-230	TERMINAL-Jamite (Brkr. Pls.)	1
44	136-77	LINER-Conn. Rod	2	105	293-96	VALVE-Read Plate	1
47	268-6-500	MAGNETO ASSY	1	107	304-134	WASHER-Brng. Plt. to Block	6
48	170-165	MUFFLER	1	108	304-5	WASHER-Flywheel	1
50	183-141	NUT-Read Valve	1	109	304-290	WASHER-Terminal	1
52	183-68-990	NUT-Flywheel	1	110	304-368	WASHER-Shorting Switch	1
53	183-21	NUT-Terminal	1	111	304-681	WASHER-Lock (Engine Mfg.)	4
54	183-26	NUT-Shorting Wire	1	112	307-124-500	WIRE ASSY-Shorting	1
55	183-25-500	NUT & L/W-Recoil Str. Mfg.	4	113	304-28	WASHER-Air Clnr. Mfg. Plt.	2
56	183-21	NUT-Shorting Switch	1	114	307-259	WIRE-Lock (Muffler)	1
59	203-257	PIN-Wrist	1				

SPECIFICATIONS

BORE -----	2-3/8"	POINT SETTING -----	.018 to .021
STROKE -----	1-3/4"	HORSEPOWER RATING -----	7.0
CUBIC INCH DISPLACEMENT -----	7.75	BLOCK CONSTRUCTION -----	Aluminum
SPARK PLUG GAP -----	.028 to .033	BEARING FLYWHEEL END -----	Needle
CARBURETION -----	Diaphragm	BEARING P. T. O. END -----	Ball



CARBURETOR				STARTER			
Ref. No.	Part No.	Description	Qty.	Ref. No.	Part No.	Description	Qty.
1	20-266	BALL-Choke Friction	1	1	157-2	ACTUATOR	1
2	45-479	COVER-Fuel Pump	1	2	265-10	CUP-Startor	1
3	45-480	COVER-Metering Diaphragm	1	3	121-6-500	HANDLE	1
4	39-991	CHECK VALVE REPAIR KIT	1	4	124-6-500	HOUSING-Incl. Recoil Spring	1
5	*293-200	DIAPHRAGM-Check Valve	1	6	157-129-500	PAWL & PIN ASS'Y	1
6	*220-180	DIAPHRAGM-Fuel Pump	1	7	219-28-500	PULLEY ASS'Y	1
7	*220-179-500	DIAPHRAGM ASS'Y-Metering	1	8	232-147	RING-Retaining	1
8	94-684	GASKET-Fuel Pump	1	9	232-35	RING-Retaining	1
9	94-685	GASKET-Metering Diaphragm	1	10	246-7	ROPE	1
10	*94-686	GASKET SET	1	11	136-2	INSERT-Handle	1
11	*157-485	LEVER-Metering	1	11A	136-128	INSERT-Handle (Plastic)	1
12	*181-102	NEEDLE-Idle	1	13	263-133	SPRING-Actuator	1
13	*181-103	NEEDLE-High Speed	1	14	263-79	SPRING-Recoil	1
14	*203-266	PIN-Metering Lever	1	15	304-320	WASHER	1
15	232-193	RING-Spring Retaining	1				
16	*257-111	SCREEN-Fuel Inlet	1				
17	258-61-500	SCREW ASS'Y-Diaphragm Cover	4				
18	258-1068-500	SCREW ASS'Y-Fuel Pump Cover	4				
19	*258-1065	SCREW-Idle Adj.	1				
20	*258-1067	SCREW-Metering Lever Pin	1				
21	*258-931-500	SCREW ASS'Y-Valve	2				
22	6-527-500	SHAFT ASS'Y-Choke	1				
23	6-528-500	SHAFT ASS'Y-Throttle	1				
24	*263-427	SPRING-Adj.	3				
25	*263-429	SPRING-Choke Friction	1				
26	*263-428	SPRING-Metering Lever	1				
27	*263-430	SPRING-Throttle Return	1				
28	293-197	VALVE-Choke	1				
29	293-198	VALVE-Throttle	1				
30	*293-199	VALVE-Needle	1				
31	304-695	WASHER-Plastic	1				
32	*216-118	WELCH PLUG-Idle (Large)	1				
33	*216-119	WELCH PLUG-Main (Small)	1				
34	39-990	REPAIR PARTS KIT	1				

* Contained in Repair Parts Kit

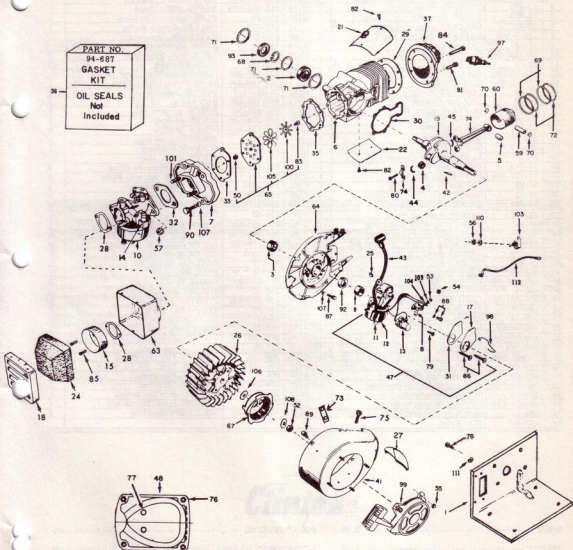


BASIC PARTS LIST

502-0309-000

SEC. II, DIVISION 1962

ISSUED JANUARY, 1977



CLINTON ENGINES CORPORATION

MAGUOKETA, IOWA

PRINTED IN U.S.A.

BASIC PARTS LIST

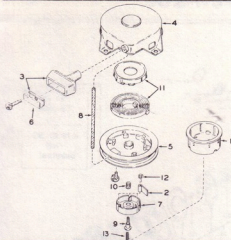
Ref. No.	Part No.	Description	Qty.	Ref. No.	Part No.	Description	Qty.
1	26-757	BASE-Engine Mtr.	1	60	204-100-500	PISTON ASS'Y-Type A & B	1
2	20-4	BEARING-Ball (Block)	1	1	204-103-500	PISTON ASS'Y-Type C	1
3	20-198-990	BEARING-Needle (Brng. Pit.)	1	63	2-144	PLATE ASS'Y-Air Clnr. Mtr.	1
4	20-197-500	BEARING-Needle (Conn. Rod)	1	64	215-545-500	PLATE ASS'Y-Bearing	1
5	20-285	BEARING-Wrist Pin	1	65	215-496-500	PLATE ASS'Y-Read	1
6	22-883	BLOCK-Cylinder	1	66	218-21	PLUG-Induction Bracket	1
7	26-527	BRACKET-Induction Ass'y	1	67	265-277	PULLEY-Recoil Spring	1
8	135-7-500	BREAKER POINTS ASS'Y	1	68	232-73	RETAI NER-Crankshaft	1
9	157-29	CAM-Breaker	1	69	148-57	RETAI NER-Wrist(Type A & B-2)	(C-1)
10	39-1005-500	CARBURETOR ASS'Y	1	70	232-40	RETAI NER-Piston Pin	2
11	81-20	CLIP-Core	1	71	232-148	RING-Retaining	3
12	135-13-990	COIL ASS'Y	1	72	233-164-990	RING-Piston (Std.) Type (A & B-2)(C-1)	1
13	135-29-990	CONDENSER	1	1	233-166-990	RING-Piston (Std.) (Type C)	1
14	69-24	CONNECTOR-Carb.	1	73	26-28	SWITCH-Bracket	1
15	2-223	CUP-Air Cleaner	1	74	245-133-500	ROD ASS'Y	1
17	45-15	COVER-Breaker Box	1	75	258-247-500	SCREW-Housing Cap	2
18	45-381	COVER-Air Cleaner	1	76	258-254-500	SCREW-Muffler	6
19	46-921	CRANKSHAFT	1	77	258-232-500	SCREW-Muffler	2
21	259-411	DEFLECTOR	1	78	24-117	SCREW-Engine Mfg.	4
22	259-17	DEFLECTOR	1	79	258-299	SCREW-Condenser	1
24	2-225	ELEMENT-Air Cleaner	1	80	258-901	SCREW-Conn. Rod	2
25	94-189	FELT-Cam Wiper	1	82	258-936-500	SCREW-Deflector to Block	4
26	63-127-500	FLYWHEEL ASS'Y	1	83	258-516	SCREW-Reed Valve to Plate	1
27	20-28	GROMMET-Spark Plug	1	84	258-1056	SCREW-Head Cylinder	4
28	94-13	GASKET-Air Clnr. to Carb.	2	85	258-974	SCREW-Air Clnr. Pit.	2
29	94-670	GASKET-Cylinder Head	1	86	258-108-500	SCREW & L'W-Mag. to Brng. Pit.	2
30	94-671	GASKET-Bearing Plate	1	87	258-43	SCREW-Brng. Pit. to Block	6
31	94-241	GASKET-Breaker Box Cover	1	88	258-297-500	SCREW & L'W-Breaker Points	1
32	94-30	GASKET-Carb. to Ind. Brkt.	1	89	258-280-500	SCREW ASS'Y-Hsg. to Brng. Pit.	4
33	94-438	GASKET-Ind. Brkt. to Reed Pit.	1	90	258-873-500	SCREW-Ind. Brkt. to Block	6
35	94-360	GASKET-Reed Pit. to Block	1	91	258-1055	SCREW-Head Cylinder	2
36	94-687	GASKET-KIT	1	92	94-257	SEAL-Oil (Brng. Pit.)	1
37	122-44	HEAD-Cylinder	1	93	94-301	SEAL-Oil (Block)	1
41	259-935-500	HOUSING ASS'Y-Blower	1	97	267-87-990	SPARK PLUG	1
42	148-4	KEY-Flywheel	1	98	263-10	SPRING-Breaker Cover	1
43	307-301-500	LEAD-Magneto Hi Tension	1	99	265-280-500	STARTER-Recoil	1
44	136-77	LINER-Rod Cap	1	100	293-97	STOP-Reed Valve	1
45	136-147	LINER-Rod Shank	1	101	24-11	STUD-Induction	2
47	268-6-500	MAGNETO ASS'Y	1	103	266-53	SWITCH-Shorting	1
48	170-166-500	MUFFLER	1	104	307-230	TERMINAL-Jamtitc (Brkr. Pts.)	1
50	183-141	NUT-Reed Valve	1	105	293-96	VALVE-Reed Plate	1
52	183-68-990	NUT-Flywheel	1	106	304-132	WASHER-Flat (Flywheel)	1
53	183-21	NUT-Terminal	1	107	304-134	WASHER-Brng. Pit. to Block	6
54	183-26	NUT-Shorting Wire	1	108	304-5	WASHER-Flywheel	1
55	183-25-500	NUT & L'W-Recoil Str. Mtr.	4	109	304-290	WASHER-Terminal	1
56	183-21	NUT-Shorting Switch	1	110	304-368	WASHER-Shorting Switch	1
57	183-29-500	NUT & L'WASHER-Carb.	2	111	304-681	WASHER-Lock (Engine Mfg.)	4
58	203-21	PIN-Roll Flywheel	1	112	307-121-500	WIRE ASS'Y-Shorting	1
59	203-298	PIN-Wrist	1				

SPECIFICATIONS

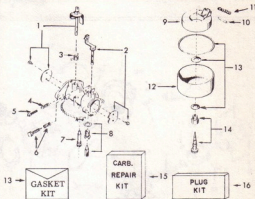
BORE ----- 2.50
 STROKE ----- 1.75
 CUBIC INCH DISPLACEMENT ----- 8.59
 SPARK PLUG GAP ----- .028 to .033
 CARBURETION ----- Float

POINT SETTING ----- .018 to .021
 HORSEPOWER RATING ----- 7.0 @6000 RPM
 BLOCK CONSTRUCTION ----- Aluminum With Cast Iron Cylinder Sleeve
 BEARING FLYWHEEL END ----- Needle
 BEARING P. T. O. END ----- Ball

RECOIL STARTER 265-280-500



CARBURETOR 39-1005-500



Ref. No.	Part Number	Description	Qty.
1	265-277	CUP-Starters	1
2	157-505	DOG-Starters	1
3	121-6-500	HANDLE-Starting	1
4	124-210-500	HOUSING ASS'Y	1
5	219-186-500	PULLEY ASS'Y	1
6	136-141	REINFORCEMENT	1
7	232-213	RETAINER-Dog	1
8	246-7	ROPE	1
9	258-1103	SCREW	1
10	263-456	SPRING-Brake	1
11	265-278-500	SPRING & CUP ASS'Y	1
12	263-459	SPRING-Dog	3
* Required Length Rope Can Be Cut From Bulk 150' Roll Part No. 246-38			
13	203-297	PIN-Alignment	1

Ref. No.	Part No.	Description	Qty
1	6-573-500	SHAFT & LEVER ASS'Y-Throttle	1
2	6-572-500	SHAFT & LEVER ASS'Y-Choke	1
3	263-357	SPRING-Throttle Shaft Return	1
4	263-82	SPRING-Adj. Screw -Carb.	1
5	258-60	SCREW-Throttle Stop	1
6	181-106-500	SCREW-Idle Adj. & Spring	1
7	182-37	NOZZLE-Main	1
8	293-30-500	INLET NEEDLE & SEAT ASS'Y	1
9	92-22-500	SCREW-Idle Lever	1
10	6-195	PIN-Float Lever	1
11	263-416	SPRING-Float Valve	1
12	25-46	COVER-Float Bowl	1
13	* 39-928	GASKET KIT-Carb.	1
14	181-5-500	POWER ADJ. NEEDLE	1
15	* 39-979	CARBURETOR-Repair Kit	1
16	* 39-938	PLUG KIT	1
* Indicates Parts In Repair Kit			

