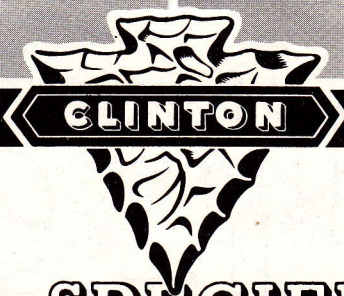


A Wide Range of Models are Made By **CLINTON** For Farm, Home and Industrial Use.



	H.P.	R.P.M.
A-200	1.1	2000
	1.5	2800
	1.75	3600

GENERAL SPECIFICATIONS

Model	Type	Description	Starter	Weight
A-200	2-Cycle Air Cooled	Horizontal Shaft	Rope or Recoil	18 lbs.

TYPE: 2-cycle, single cylinder, horizontal shaft, air cooled.

AIR COOLED: Powerful flywheel blower forces strong air blast through deep cooling fins on cylinder and cylinder head to maintain correct, operating temperature.

BORE: 1 7/8".

STROKE: 1 5/8".

PISTON DISPLACEMENT: 4.5 cubic inches.

IGNITION: Patented high tension, built-in flywheel magneto, moisture and dust proof, covered points.

SPARK PLUG: 14 mm.

LUBRICATION: Lubricating oil carried in fuel to all moving parts.

CARBURETION: Float-feed carburetor with manual speed adjustment and gasoline strainer with shut-off.

GOVERNOR: Adjustable, air-velocity type completely enclosed.

MAIN BEARINGS: Large surface bearings on power-take-off side designed to withstand extra stress.

CRANKSHAFT: Arma steel, induction heat treated, has counter-weights integral with shaft. Bearing surface superfinished. Extra large diameter crankshaft extension.

CONNECTING ROD: I-beam aluminum alloy, with bronze insert crank pin and wrist pin.

PISTON: Aluminum alloy Clinton-engineered for efficient combustion.

PISTON RINGS: Two compression rings, pinned to prevent rotation.

CYLINDER AND CRANKCASE: One-piece die cast cylinder block and crankcase with large amount of cooling area for cool operation. A close-grained cast iron liner is die cast in block.

CYLINDER HEAD: Integral with cylinder casting.

AIR CLEANER: Metallic mesh type.

FUEL TANK: Two and one-half pint capacity.

DIRECTION OF ROTATION: (viewed from power-take-off side) Counter-clockwise.

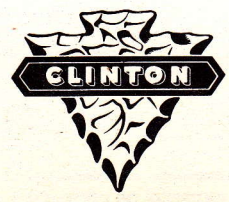
FINISH: Red heat-resisting enamel. Other colors upon special order.

STANDARD EQUIPMENT

Standard equipment includes: Air cleaner, specially designed dust and moisture-proof high-tension flywheel magneto, fuel tank, muffler, blower housing screen, rope starter.

SPECIAL EQUIPMENT

Special equipment available includes: Recoil starter, remote governor controls, remote stop control and any color finish, ball bearing on power-take-off side.

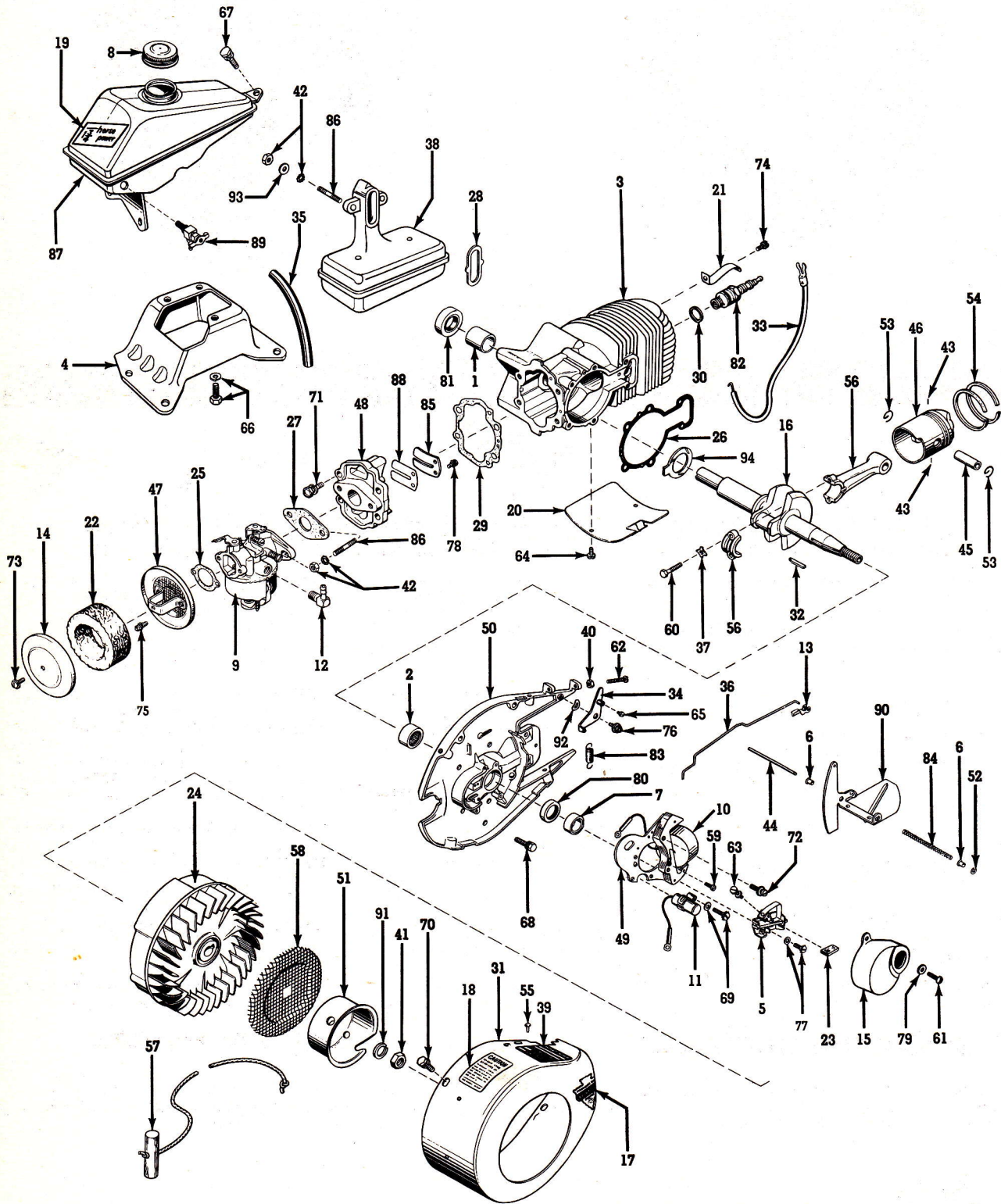


MANUFACTURED IN A WIDE RANGE OF 2-CYCLE AND 4-CYCLE MODELS

CLINTON ENGINES PROVIDE POWER

FOR FARM • HOME • INDUSTRIAL EQUIPMENT

PRINTED IN U.S.A.



CLINTON

S	E	R	I	E	S	
A-200						
2	-	C	Y	C	L	E

**BASIC
TYPE**
**SEC. II, DIV. A-200
PARTS CATALOG**
 Issued December, 1955

There is one Basic Type of A-200 engine covered by this parts list. Check for Model Variations following this Basic Parts List.

NOTE: See page (a) on "How to Identify Your Clinton Engine."

BASIC PARTS LIST

Fig. 1 Ref. No.	PART DESCRIPTION	Part No.	Quantity
1	BEARING — Main, Sleeve (Block Assembly).....	2300	1
2	BEARING — Needle (Bearing Plate).....	2059	1
3	BLOCK ASSEMBLY — Cylinder.....	2273-A	1
	NOTE: Block Assembly includes Ref. No. 1.		
4	BRACKET — Engine Base.....	2304	1
5	BREAKER POINTS ASSEMBLY — Magneto.....	5543	1
	NOTE: Breaker Points Assembly includes Ref. No. 63.		
6	BUSHING — Air Vane.....	7239	2
7	CAM — Breaker Points.....	5594	1
8	CAP & GASKET ASSEMBLY — Fuel.....	4517-A	1
9	CARBURETOR ASSEMBLY — Clinton.....	14012	1
10	COIL ASSEMBLY — Magneto.....	5593-A	1
11	CONDENSER — Magneto.....	5589-A	1
12	CONNECTOR — Flexible Fuel Line (Carburetor).....	5052	1
13	CONNECTOR — Governor Link.....	2226	1
14	COVER — Air Cleaner.....	2003	1
15	COVER — Breaker Points.....	5595	1
16	CRANKSHAFT.....	2252	1
17	DECAL — Arrowhead.....	3579	1
18	DECAL — Instruction, Fuel Mixture.....	2098	1
19	DECAL — Horsepower.....	21010	1
20	DEFLECTOR — Air, Cylinder.....	2037	1
	DEFLECTOR — Air, Cylinder.....	2305	1
21	DEVICE — Ignition Shorting Clip.....	2054	1
22	ELEMENT — Air Cleaner.....	2132	1
23	FELT — Lubrication, Cam Follower.....	5504	1
24	FLYWHEEL ASSEMBLY.....	5597-A	1
	NOTE: Sold as an Assembly only.		
25	GASKET — Air Cleaner (Bracket to Air Cleaner).....	2075	1
26	GASKET — Bearing Plate (Standard, .030 thick).....	2039	1
	NOTE: Gaskets are also available in the following thicknesses: .025, .030 and .035. Order by Part Number and designate thickness.		
27	GASKET — Carburetor to Reed Plate.....	2096	1
28	GASKET — Muffler to Block.....	2069	1
29	GASKET — Reed Plate to Block.....	2344	1
30	GASKET — Spark Plug.....	3115	1
	GASKET KIT — Engine Overhaul.....	2203	1
	NOTE: Kit contains all necessary Gaskets and Oil Seals.		
31	HOUSING — Blower.....	2310	1
32	KEY — Flywheel.....	10339	1
33	LEAD — High Tension, Magneto.....	2055	1
34	LEVER AND SCREW ASSEMBLY — Throttle Control.....	2043-B	1
35	LINE — Fuel, Flexible.....	6316	1
36	LINK — Air Governor.....	2301	1
37	LOCK — Connecting Rod Screw.....	2027	2
38	MUFFLER.....	2220-A	1
39	NAMEPLATE — (Mounted on Blower Housing).....	2311	1
40	NUT — Hexagon, 8-32 (Speed Control Adjusting).....	5522	1
41	NUT — Hexagon, 7/16-20 (Starter Pulley).....	3250	1
42	NUT & L'WASHER ASS'Y — Muffler Mtg. and Carburetor Mtg.....	3255-A	4
43	PIN — Drive (Ring Retainer).....	2099	2
44	PIN — Pivot, Air Vane.....	7238	1
45	PIN — Wrist.....	2028	1

CLINTON

S E R I E S
A-200
2 - C Y C L E

BASIC
TYPE

BASIC PARTS LIST (Continued)

Fig. 1 Ref. No.	PART DESCRIPTION	Part No.	Quantity
46	PISTON — Standard.....	2030	1
	PISTON ASSEMBLY — Standard.....	2030-B	1
	NOTE: Piston Assemblies are also available in the following oversizes: .005, .010, and .020. Order by Part Number and specify oversize.		
	NOTE: Piston Assembly includes Ref. Nos. 43, 45, 46, 53 and 54.		
47	PLATE — Air Cleaner Mounting.....	2001-B	1
48	PLATE — Reed Valve Assembly.....	2322-A	1
	NOTE: Reed Valve Plate Assembly includes Ref. Nos. 78, 85, and 88.		
49	PLATE ASSEMBLY — Coil and Lamination.....	5090-B	1
	NOTE: Includes Ref. Nos. 10 and 59.		
50	PLATE — Bearing.....	2313-A	1
	NOTE: Bearing Plate includes Ref. Nos. 2 and 80.		
51	PULLEY — Starter.....	3299	1
52	RETAINER — Air Vane.....	4430	1
53	RETAINER — Wrist Pin.....	2029	2
54	RING — Piston, Standard.....	2056	2
	RING SET — Piston, Standard.....	2200	1
	NOTE: Rings are also available in the following oversizes: .005, .010 and .020. Order by Part Number and specify oversize.		
55	RIVET — Tubular (Name Plate).....	5460	2
56	ROD ASSEMBLY — Connecting.....	2022-A	1
	NOTE: Rod Assembly includes Ref. Nos. 37 and 60.		
57	ROPE ASSEMBLY — Starter.....	4266	1
58	SCREEN — Revolving.....	7187	1
59	SCREW — Coil to Laminations.....	5641	1
60	SCREW — H.H. Slotted, 10-24 x 3/4 (Connecting Rod Cap).....	5429	2
61	SCREW — O.H.S.T., 6-32 x 3/8 (Breaker Cover to Bearing Plate).....	5405	2
62	SCREW — R.H.M., 8-32 x 7/8 (Speed Control Adjusting).....	3240	1
63	SCREW — R.H.S.T., 6-32 x 1/2 (Breaker Points Terminal).....	5664	1
64	SCREW — 8-32 x 3/8 (Deflectors).....	5644	3
65	SCREW — H.H.M., 8-32 x 1/4 (Throttle Lever).....	5681	1
66	SCREW & L'WASHER ASSY. — Engine Base.....	3204-G	3
67	SCREW & L'WASHER ASSY. — Tank Bracket to Engine Mounting Bracket.....	3205-G	1
68	SCREW & L'WASHER ASSY. — H.H.C., 1/4-20 x 3/4 (Bearing Plate to Cylinder Block).....	5446-F	6
69	SCREW & L'WASHER ASSY. — F.H.M., 8-32 x 5/8 (Condenser to Bearing Plate).....	5674-F	1
70	SCREW & L'WASHER ASSY. — H.H.C., 1/4-20 x 1/2 (Blower Housing to Plate).....	3632-G	4
71	SCREW & L'WASHER ASSY. — H.H.C., 1/4-20 x 7/8 (Reed Plate to Block).....	3294-G	4
72	SCREW & L'WASHER ASSY. — P.H.S.T., 10-24 x 1 (Magneto Plate to Bearing Plate).....	5682-A	2
73	SCREW & L'WASHER ASSY. — R.H.M., 8-32 x 3/8 (Air Cleaner Cover to Mounting Plate).....	5457-A	1
74	SCREW & L'WASHER ASSY. — 8-32 x 1/2 H.H.C. (Ignition Clip).....	5443-A	1
75	SCREW & L'WASHER ASSY. — 8-32 x 7/16 S.H.H. (Air Cleaner).....	5673-A	2
76	SCREW & L'WASHER ASSY. — R.H.M., 8-32 x 1/2 (Throttle Control).....	5443-D	1
77	SCREW & L'WASHER ASSY. — R.H.M., 8-32 x 3/8 (Breaker Points to Bearing Plate).....	5409-F	1
78	SCREW & L'WASHER ASSY. — R.H.S.T., 8-32 x 3/8 (Reed Assembly to Reed Plate).....	5644-A	2
79	SEAL — Breaker Point Cover.....	5596	1
80	SEAL — Oil (Bearing Plate).....	7254	1
81	SEAL — Oil (Block).....	2303	1

CLINTON

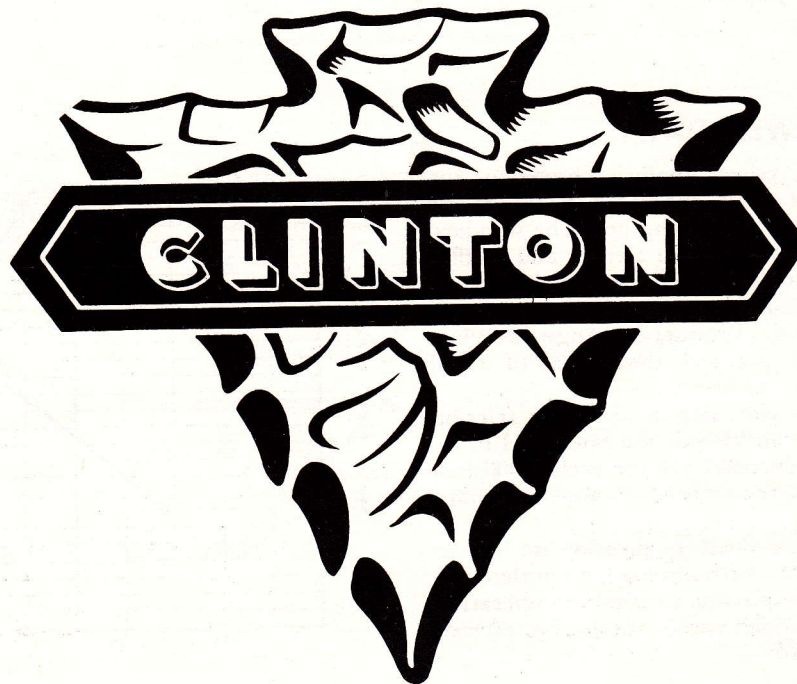
S E R I E S
A-200
2 - C Y C L E

BASIC
TYPE

SEC. II, DIV. A-200
PARTS CATALOG
Issued December, 1955

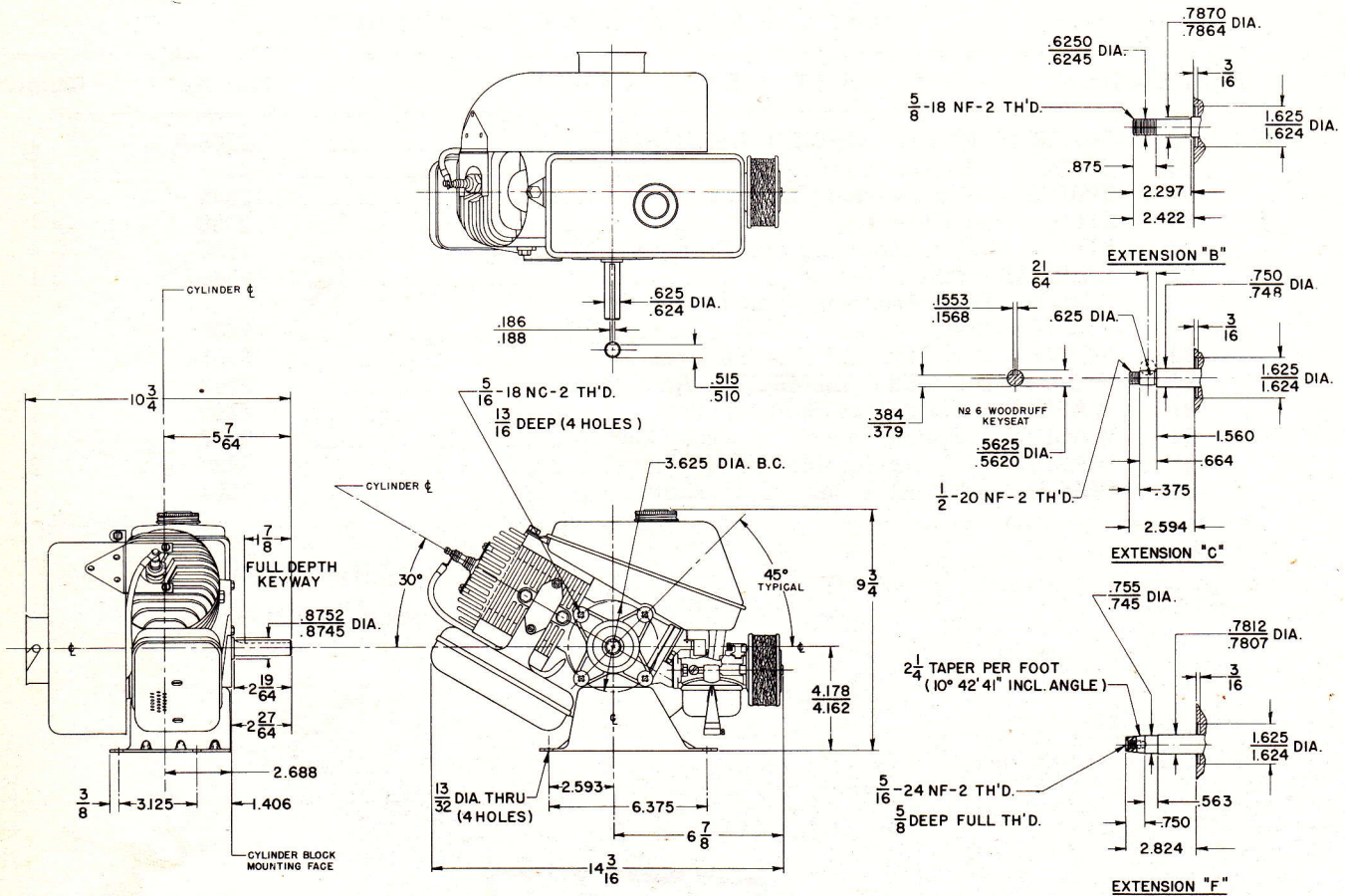
BASIC PARTS LIST (Continued)

Fig. 1 Ref. No.	PART DESCRIPTION	Part No.	Quantity
82	SPARK PLUG AND GASKET ASSEMBLY.....	2168-A	1
83	SPRING — Air Governor.....	2448	1
84	SPRING — Compression (Air Vane).....	10005	1
85	STOP — Reed Valve.....	2036	1
86	STUD — Muffler Mounting and Carburetor Mounting.....	5659	4
87	TANK ASSEMBLY — Fuel.....	2306-B	1
	NOTE: Tank Assembly includes Ref. No. 8.		
88	VALVE — Reed.....	2035	1
89	VALVE — Fuel, Shut-Off (Flexible Line).....	5051	1
90	VANE AND LEVER ASSEMBLY — Air Governor.....	2323	1
91	WASHER — Lock, 7/16 (Starter Pulley).....	5499	1
92	WASHER — Spring Tension (Throttle Control).....	2077	1
93	WASHER — Plain, Flat (Muffler).....	5498	2
94	WASHER — Thrust, Bronze (Crankshaft).....	2064	1



**DIMENSIONAL
SPECIFICATIONS
AND POWER DATA**

Detailed prints and engineering counsel are available. Specifications and Dimensions are subject to change without notice.



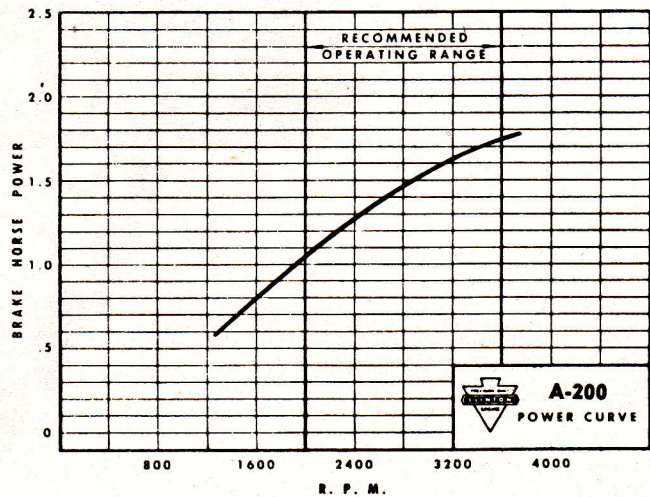
POWER DATA

The performance and power analysis figures for the Clinton Engine series show the rated Brake Horse Power developed from test-run engines. The standard engine equipped with standard air cleaner and muffler was used, in every case, for these tests and the figures have been corrected for barometer at sea level and temperature of 60° F. Production engines when shipped will develop not less than 85% of rated B.H.P.

Production engines, after run-in to reduce friction will develop not less than 95% of the rated B.H.P.

Engine power will decrease 3% for each 1,000 feet above sea level, and 1% for each 10° F. above standard temperature of 60° F.

Unless otherwise specified, governors are set to operate at 3,400 R.P.M. without load. Complete details of installations requiring continuous operation at other than recommended speeds should be referred to the factory for approval.



ENGINE DIVISION OF CLINTON MACHINE CO.

MAQUOKETA, IOWA

CABLE ADDRESS: ENGINES U. S. A.

CLINTON

S E R I E S
A-200
P A N T H E R

MODEL VARIATIONS

SEC. II, DIV. A-200
PARTS CATALOG
Revised May, 1957
Supersedes May, 1956

MODEL VARIATIONS OF A-200 SERIES

The adaptation of Clinton Engines to a wide variety of uses results in what is known as "Model Variations." Following is the complete list of all Models produced up to issue date (shown above). Opposite each Engine Model listed are the Part Numbers and/or Assembly Numbers for the Series used IN ADDITION TO or IN PLACE OF the parts illustrated and shown on the Basic Parts List preceding this Model Variations List. Refer to other sections of this Manual when Assembly Numbers are given to find the Parts List for these assemblies.

See page (a) on "How to Identify Your Clinton Engine." Use the preceding Basic Parts List except as shown below.

ENGINE MODEL — See page (a), "How to Identify Your Clinton Engine."	FOOTNOTES	BASE—ENGINE (Part Numbers Shown). Refer to Sec. IV, Div. A for further information.	CONTROL GROUP (Control Group Illustration Numbers Shown). Refer to Sec. III, Div. D for Parts List.	CONTROL CABLE LENGTH — Replacement cable is furnished in 72" length ONLY, cut to length shown.	CRANKSHAFT (Part Numbers Shown). Refer to Sec. IV, Div. B for details and further information.	STARTER—RECOIL. Refer to Sec. III, Div. H for Parts List.	HOUSING ASSEMBLY — BLOWER (Part Numbers Shown). Refer to Illustrated Basic Parts List for corresponding part.
A-200-100				72"			
A-200-101				72"		Yes	2345-A
A-200-102						Yes	2345-A
A-200-103		NO VARIATIONS					
A-200-104						Yes	2345-A
A-200-105	Note 1					Yes	2351-A
A-200-106	Note 2						

NOTE 1—Use #2316 Plate, Bearing; #5566 Grommet; #5567-B Shorting Wire and #5644 Screw.

NOTE 2—Use #2402 Spacer; #5699 Screw (2); #5907 Washer (2); #2096 Washer and #2403 Link.