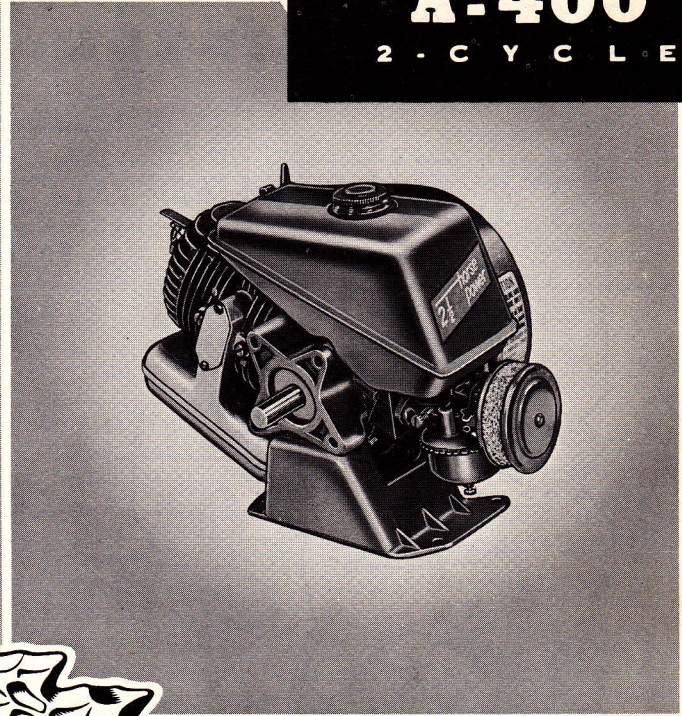
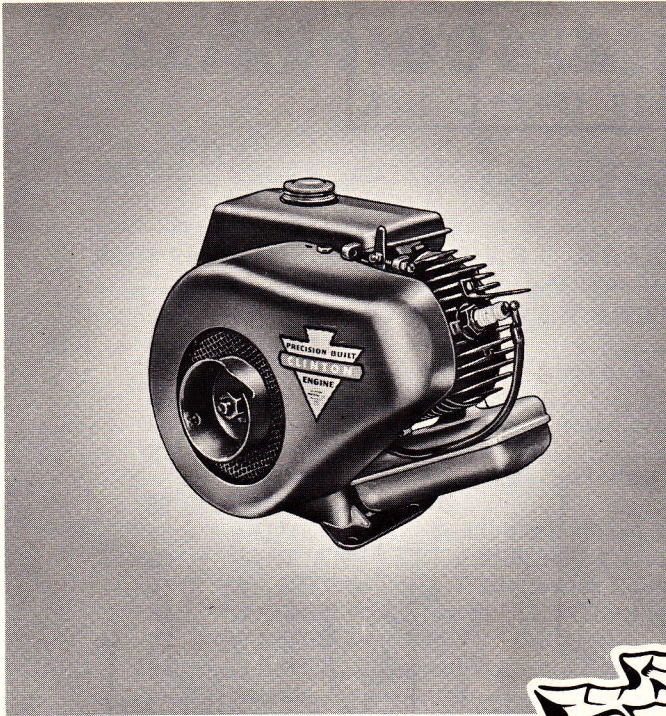


S E R I E S  
**A-400**  
 2 - C Y C L E



A Wide Range of Models are Made By

**CLINTON**

For Farm, Home and Industrial Use.

	H.P.	R.P.M.
<b>A-400</b>	1.3.....	2000
	1.9.....	2800
	2.5.....	3600

## GENERAL SPECIFICATIONS

Model	Type	Description	Starter	Weight
A-400	2-Cycle Air Cooled	Horizontal Shaft	Rope or Recoil	18 lbs.

**TYPE:** 2-cycle, single cylinder, horizontal shaft, air cooled.

**AIR COOLED:** Powerful flywheel blower forces strong air blast through deep cooling fins on cylinder and cylinder head to maintain correct operating temperature.

**BORE:** 2 1/8".

**STROKE:** 1 5/8".

**PISTON DISPLACEMENT:** 5.76 cubic inches.

**IGNITION:** Patented high tension, built-in fly-wheel magneto, moisture and dust proof, covered points.

**SPARK PLUG:** 14 mm.

**LUBRICATION:** Lubricating oil carried in fuel to all moving parts.

**CARBURETION:** Float-feed carburetor with manual speed adjustment and gasoline strainer with shut-off.

**GOVERNOR:** Adjustable, air-velocity type completely enclosed.

**MAIN BEARINGS:** Large surface bearings on power-take-off side designed to withstand extra stress.

**CRANKSHAFT:** Arma steel, induction heat treated, has counter-weights integral with shaft. Bearing surface superfinished. Large diameter crankshaft extension.

**CONNECTING ROD:** I-beam aluminum alloy, with bronze insert crank pin and wrist pin.

**PISTON:** Aluminum alloy Clinton-engineered for efficient combustion.

**PISTON RINGS:** Two compression rings, pinned to prevent rotation.

**CYLINDER AND CRANKCASE:** One-piece die cast cylinder block and crankcase with large amount of cooling area for cool operation. A close-grained cast iron liner is die cast in block.

**CYLINDER HEAD:** Integral with cylinder casting.

**AIR CLEANER:** Metallic mesh type.

**FUEL TANK:** Two and one-half pint capacity.

**DIRECTION OF ROTATION:** (viewed from power-take-off side) Counter-clockwise.

**FINISH:** Red heat-resisting enamel. Other colors upon special order.

### STANDARD EQUIPMENT

Standard equipment includes: Air cleaner, specially designed dust and moisture-proof high-tension flywheel magneto, fuel tank, muffler, blower housing screen, rope starter.

### SPECIAL EQUIPMENT

Special equipment available includes: Recoil starter, remote governor controls, remote stop control and any color finish, ball bearing on power-take-off side.

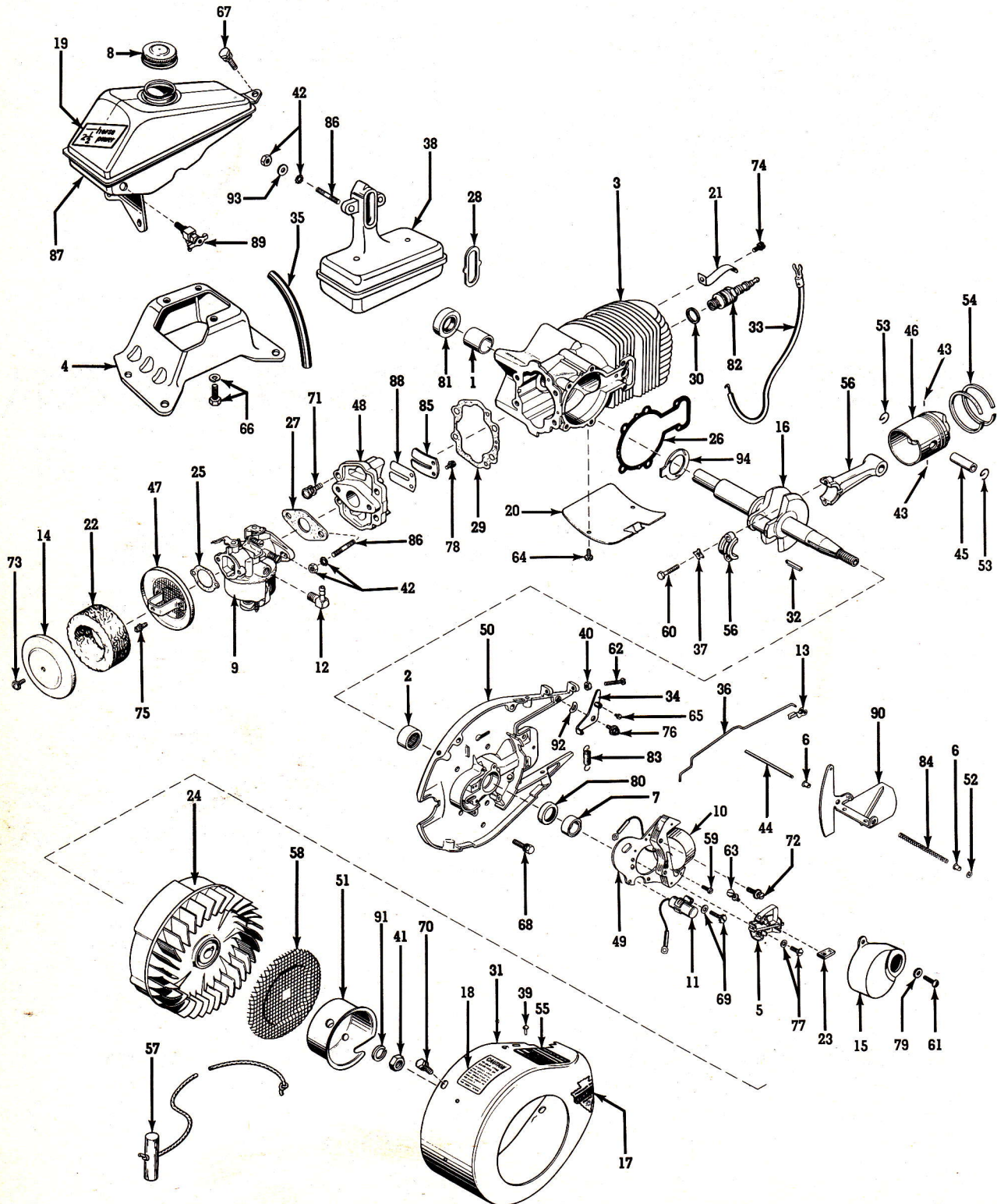


MANUFACTURED IN A WIDE RANGE OF 2-CYCLE AND 4-CYCLE MODELS

# CLINTON ENGINES PROVIDE POWER

FOR FARM • HOME • INDUSTRIAL EQUIPMENT

PRINTED IN U.S.A.



# CLINTON

**S E R I E S**  
**A-400**  
**2 - C Y C L E**

**BASIC  
TYPE**

SEC. II, DIV. A-400  
PARTS CATALOG  
Issued December, 1955

There is one Basic Type of A-400 engine covered by this parts list. Check for Model Variations following this Basic Parts List.

**NOTE:** See page (a) on "How to Identify Your Clinton Engine."

## BASIC PARTS LIST

Fig. 1 Ref. No.	PART DESCRIPTION	Part No.	Quantity
1	BEARING — Main, Sleeve (Block Assembly).....	2300	1
2	BEARING — Sleeve (Bearing Plate).....	2059	1
3	BLOCK ASSEMBLY — Cylinder.....	2473-A	1
	NOTE: Block Assembly includes Ref. No. 1.		
4	BRACKET — Engine Base.....	2304	1
5	BREAKER POINTS ASSEMBLY — Magneto.....	5543	1
	NOTE: Breaker Points Assembly includes Ref. No. 63.		
6	BUSHING — Air Vane.....	7239	2
7	CAM — Breaker Points.....	5594	1
8	CAP & GASKET ASSEMBLY — Fuel.....	4517-A	1
9	CARBURETOR ASSEMBLY — Clinton.....	14012	1
10	COIL ASSEMBLY — Magneto.....	5593-A	1
11	CONDENSER — Magneto.....	5589-A	1
12	CONNECTOR — Flexible Fuel Line (Carburetor).....	5052	1
13	CONNECTOR — Governor Link.....	2226	1
14	COVER — Air Cleaner.....	2003	1
15	COVER — Breaker Points.....	5595	1
16	CRANKSHAFT.....	2252	1
17	DECAL — Arrowhead.....	3579	1
18	DECAL — Instruction, Fuel Mixture.....	2098	1
19	DECAL — Horsepower.....	10010	1
20	DEFLECTOR — Air, Cylinder.....	2037	1
	DEFLECTOR — Air, Cylinder.....	2305	1
21	DEVICE — Ignition Shorting Clip.....	2054	1
22	ELEMENT — Air Cleaner.....	2132	1
23	FELT — Lubrication, Cam Follower.....	5504	1
24	FLYWHEEL ASSEMBLY.....	5711-A	1
	NOTE: Sold as an Assembly only.		
25	GASKET — Air Cleaner (Bracket to Air Cleaner).....	2075	1
26	GASKET — Bearing Plate.....	2039	1
	NOTE: Gaskets are also available in the following thicknesses: .025, .030 and .035. Order by Part Number and designate thickness.		
27	GASKET — Carburetor to Reed Plate.....	2096	1
28	GASKET — Muffler to Block.....	2069	1
29	GASKET — Reed Plate to Block.....	2344	1
30	GASKET — Spark Plug.....	3115	1
	GASKET KIT — Engine Overhaul.....	2203	1
	NOTE: Kit contains all necessary Gaskets and Oil Seals.		
31	HOUSING — Blower.....	2310	1
32	KEY — Flywheel.....	10339	1
33	LEAD — High Tension, Magneto.....	P2055	1
34	LEVER AND SCREW ASSEMBLY — Throttle Control.....	2043-B	1
35	LINE — Fuel, Flexible.....	6316	1
36	LINK — Air Governor.....	2301	1
37	LOCK — Connecting Rod Screw.....	2027	2
38	MUFFLER.....	2220-A	1
39	NAMEPLATE — (Mounted on Blower Housing).....	2311	1
40	NUT — Hexagon, 8-32 (Speed Control Adjusting).....	5522	1
41	NUT — Hexagon, 7/16-20 (Starter Pulley).....	3250	1
42	NUT & L'WASHER ASSY. — Carburetor and Muffler Mounting.....	3255-A	4
43	PIN — Drive (Ring Retainer).....	2099	2
44	PIN — Pivot, Air Vane.....	7238	1
45	PIN — Wrist.....	2428	1

**CLINTON**

S E R I E S  
**A-400**  
2 - C Y C L E

**BASIC  
TYPE**

**BASIC PARTS LIST (Continued)**

Fig. 1 Ref. No.	PART DESCRIPTION	Part No.	Quantity
46	PISTON — Standard	2430	1
	PISTON ASSEMBLY — Standard	2430-A	1
	NOTE: Piston Assemblies are also available in the following over-sizes: .005, .010, and .020. Order by Part Number and specify oversize.		
	NOTE: Piston Assembly includes Ref. Nos. 43, 45, 46, 53 and 54.		
47	PLATE — Air Cleaner Mounting	2001-B	1
48	PLATE — Reed Valve Assembly	2322-A	1
	NOTE: Reed Valve Plate Assembly includes Ref. Nos. 78, 85, and 88.		
49	PLATE — Coil and Lamination Mounting	5590-B	1
	NOTE: Includes Ref. Nos. 10 and 59.		
50	PLATE — Bearing	2313-A	1
	NOTE: Bearing Plate includes Ref. Nos. 2 and 80.		
51	PULLEY — Starter	3299	1
52	RETAINER — Air Vane	4430	1
53	RETAINER — Wrist Pin	3030	2
54	RING — Piston, Standard (Compression)	2408	2
	RING SET — Piston, Standard	2486	1
	NOTE: Rings are also available in the following oversizes: .005, .010 and .020. Order by Part Number and specify oversize.		
55	RIVET — Tubular (Name Plate)	5460	2
56	ROD ASSEMBLY — Connecting	2422-D	1
	NOTE: Rod Assembly includes Ref. Nos. 37 and 60.		
57	ROPE ASSEMBLY — Starter	4266	1
58	SCREEN — Revolving	7187	1
59	SCREW — R.H.M., #4-40 x ¼ (Coil to Laminations)	5641	1
60	SCREW — H.H. Slotted, 10-24 x ¾ (Connecting Rod Cap)	5429	2
61	SCREW — O.H.S.T., 6-32 x ⅜ (Breaker Cover to Bearing Plate)	5405	2
62	SCREW — R.H.M., 8-32 x ⅞ (Speed Control Adjusting)	3240	1
63	SCREW — R.H.S.T., 6-32 x ½ (Breaker Points to Terminal)	5664	1
64	SCREW — H.H.C., 8-32 x ⅞ (Deflector)	5644	3
65	SCREW — H.H.C., #8-32 x ¼ (Throttle Lever Nut)	5681	1
66	SCREW & L'WASHER ASSY. — Engine Base	3204-G	3
67	SCREW & L'WASHER ASSY. — H.H.C., ¼-20 x ½ (Tank Bracket to Engine Mounting Bracket)	3205-G	1
68	SCREW & L'WASHER ASSY. — H.H.C., ¼-20 x ¾ (Bearing Plate to Cylinder Block)	5446-F	6
69	SCREW & L'WASHER ASSY. — F.H.M., 8-32 x ⅞ (Condenser to Bearing Plate)	5674-F	1
70	SCREW & L'WASHER ASSY. — H.H.C., ¼-20 x ½ (Blower Housing to Plate)	3632-G	4
71	SCREW & L'WASHER ASSY. — H.H.C., ¼-20 x ⅞ (Reed Plate to Block)	3294-G	4
72	SCREW & L'WASHER ASSY. — P.H.S.T., 10-24 x 1 (Magneto Plate to Bearing Plate)	5682-A	2
73	SCREW & L'WASHER ASSY. — R.H.M., 8-32 x ⅞ (Air Cleaner Cover to Mounting Plate)	5457-A	1
74	SCREW & L'WASHER ASSY. — 8-32 x ½ H.H.C. (Ignition Clip)	5443-A	1
75	SCREW & L'WASHER ASSY. — 8-32 x 7/16 S.H.H. (Air Cleaner)	5673-A	2
76	SCREW & L'WASHER ASSY. — R.H.M., 8-32 x ½ (Throttle Control)	5443-D	1
77	SCREW & L'WASHER ASSY. — R.H.M., 8-32 x ⅞ (Breaker Points to Bearing Plate)	5409-F	1
78	SCREW & L'WASHER ASSY. — R.H.S.T., 8-32 x ⅞ (Reed Assembly to Reed Plate)	5644-A	2
79	SEAL — Breaker Point Cover	5596	1
80	SEAL — Oil (Bearing Plate)	7254	1
81	SEAL — Oil (Block)	2303	1

# CLINTON

S E R I E S  
**A-400**  
2 - C Y C L E

BASIC  
TYPE

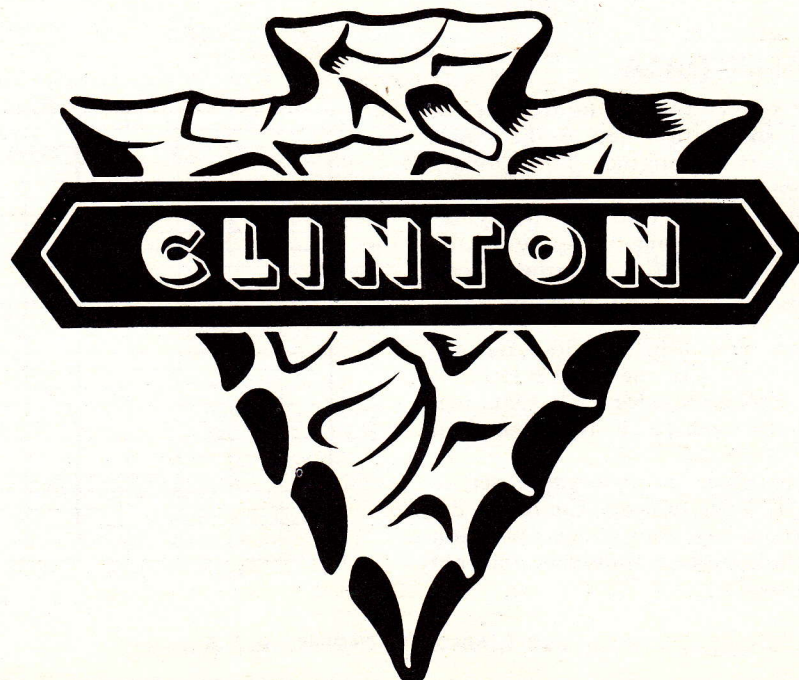
SEC. II, DIV. A-400  
PARTS CATALOG  
Issued December, 1955

## BASIC PARTS LIST (Continued)

Fig. 1 Ref. No.	PART DESCRIPTION	Part No.	Quantity
82	SPARK PLUG AND GASKET ASSEMBLY.....	2168-A	1
83	SPRING — Air Governor.....	2448	1
84	SPRING — Compression (Air Vane).....	10005	1
85	STOP — Reed Valve.....	2036	1
86	STUD — Muffler Mounting and Carburetor Mounting.....	5659	4
87	TANK ASSEMBLY — Fuel.....	2306-B	1
	NOTE: Tank Assembly includes Ref. No. 8.		
88	VALVE — Reed.....	2035	1
89	VALVE — Fuel, Shut-Off (Flexible Line).....	5051	1
90	VANE AND LEVER ASSEMBLY — Air Governor.....	2323	1
91	WASHER — Lock, 7/16 (Starter Pulley).....	5499	1
92	WASHER — Spring Tension (Throttle Control).....	2077	1
93	WASHER — Plain, Flat (Muffler).....	5498	2
94	WASHER — Thrust, Bronze (Crankshaft).....	2464	1

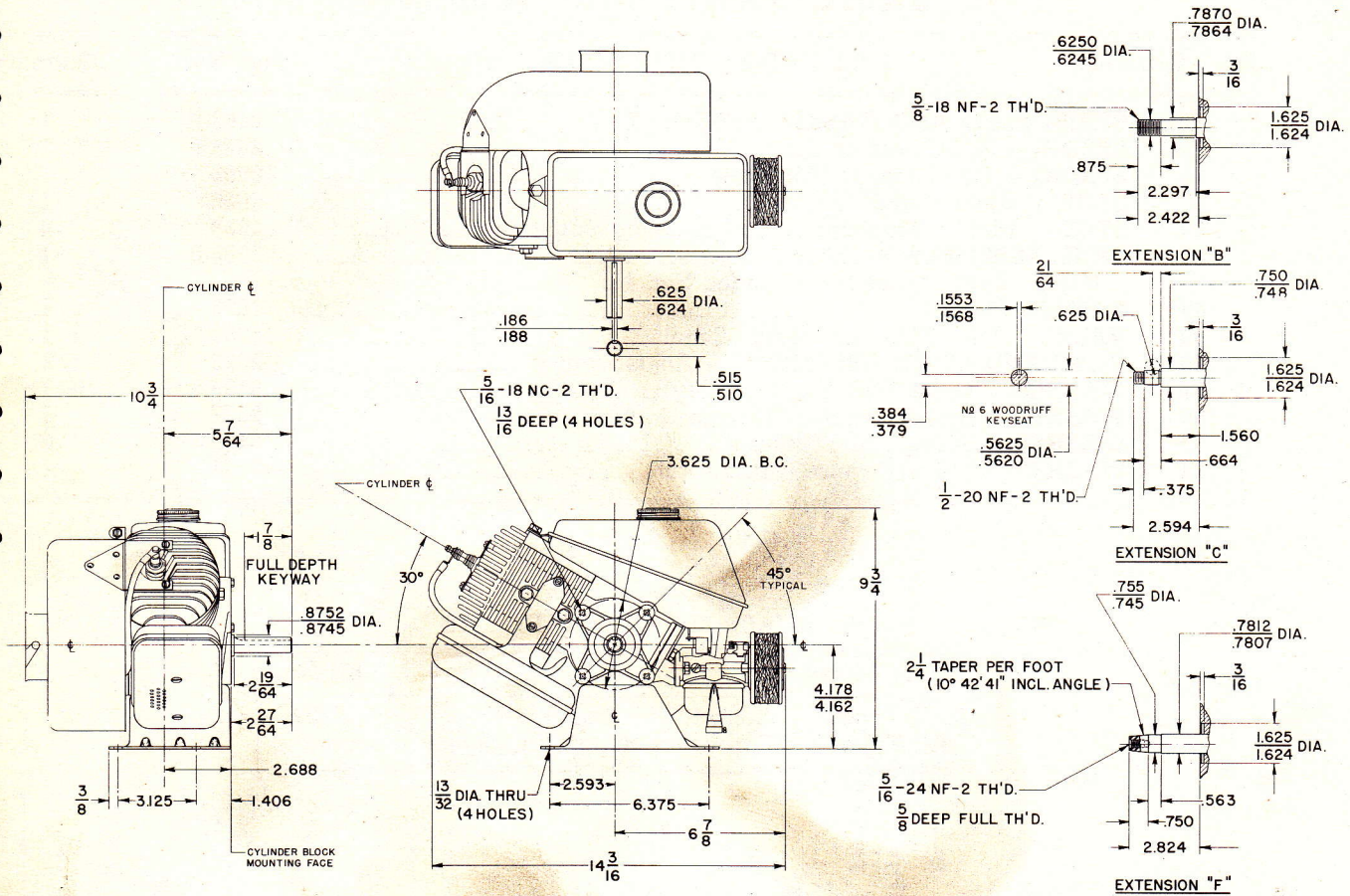
### AVAILABLE OVERHAUL KITS

Engine Model	Description	Kit No.
All Types	Gasket Overhaul Kit	2203
All Types	Carburetor Repair Kit (Clinton)	14237



**DIMENSIONAL  
SPECIFICATIONS  
AND POWER DATA**

Detailed prints and engineering counsel are available. Specifications and Dimensions are subject to change without notice.



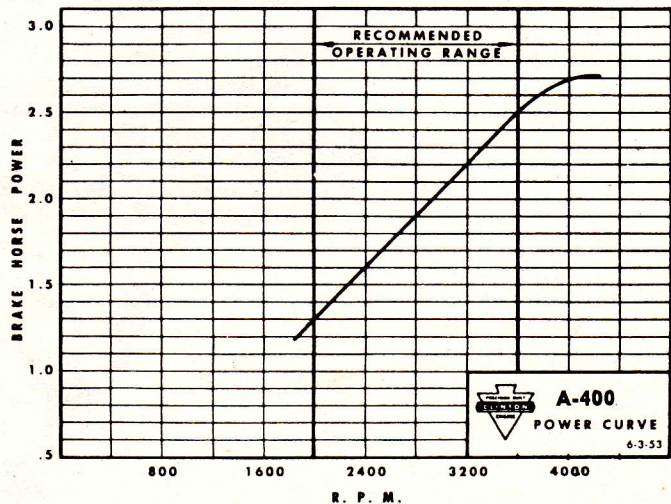
**POWER DATA**

The performance and power analysis figures for the Clinton Engine series show the rated Brake Horse Power developed from test-run engines. The standard engine equipped with standard air cleaner and muffler was used, in every case, for these tests and the figures have been corrected for barometer at sea level and temperature of 60° F. Production engines when shipped will develop not less than 85% of rated B.H.P.

Production engines, after run-in to reduce friction will develop not less than 95% of the rated B.H.P.

Engine power will decrease 3% for each 1,000 feet above sea level, and 1% for each 10° F. above standard temperature of 60° F.

Unless otherwise specified, governors are set to operate at 3,400 R.P.M. without load. Complete details of installations requiring continuous operation at other than recommended speeds should be referred to the factory for approval.



CABLE ADDRESS: ENGINES U. S. A.  
**ENGINE DIVISION OF CLINTON MACHINE CO.**  
 MAQUOKETA, IOWA

# CLINTON

**S E R I E S**  
**A-400**  
**P A N T H E R**

## MODEL VARIATIONS

SEC. II, DIV. A-400  
PARTS CATALOG  
Revised January, 1959  
Supersedes Mar., 1958

### MODEL VARIATIONS OF A-400 SERIES

The adaptation of Clinton Engines to a wide variety of uses results in what is known as "Model Variations." Following is the complete list of all Models produced up to issue date (shown above). Opposite each Engine Model listed are the Part Numbers and/or Assembly Numbers for the Series used IN ADDITION TO or IN PLACE OF the parts illustrated and shown on the Basic Parts List preceding this Model Variations List. Refer to other sections of this Manual when Assembly Numbers are given to find the Parts List for these assemblies.

See page (a) on "How to Identify Your Clinton Engine." Use the preceding Basic Parts List except as shown below.

ENGINE MODEL—See page (a), "How to Identify Your Clinton Engine."	FOOTNOTES (Check page 2).	BLOCK ASSEMBLY — CYLINDER (Part Number Shown). Refer to Illustrated Basic Parts List for corresponding part.	CRANKSHAFT (Part Numbers Shown). Refer to Sec. IV, Div. B for details and further information.	CONTROL GROUP (Control Group Illustration Numbers Shown). Refer to Sec. III, Div. D for Parts List.	CONTROL CABLE LENGTH — Replacement cable is furnished in 72" length ONLY, cut to length shown.	PLATE ASSEMBLY — BEARING (Part Numbers Shown). Refer to Illustrated Basic Parts List for corresponding part.	STARTER—RECOIL. Refer to Sec. III, Div. H for Parts List.	HOUSING ASSEMBLY — BLOWER (Part Numbers Shown). Refer to Basic Parts List for corresponding part.	REDUCTION GEAR (Assy. Nos. Shown). Refer to Sec. III, Div. C for Parts List.	REDUCTION GEAR MOUNTING POSITION—"Clock" position shows mounting of reduction unit in relation to Crankshaft.
A-400-100					72"					
A-400-101					72"		Yes	2345-B		
A-400-102							Yes	2345-B		
A-400-103							Yes	2345-B		
A-400-104	No Variations—Use Basic Parts List									
A-400-105							Yes	2345-B		
A-400-106	Note 2						Yes	2345-B		
A-400-107	Note 3									
A-400-108	Note 3						Yes	2345-B		
A-400-109	Note 2						Yes	2345-B		
A-400-110	No Variations—Use Basic Parts List									
A-400-111	Notes 2, 4, 5						Yes	2345-B		
A-400-112	Note 6									
A-400-113	Note 2			3855-56	72"					2404-A
A-400-114	Note 7									
A-400-115	Note 7						Yes	2345-B		
A-400-116	Notes 3, 7						Yes	2345-B		
A-400-117	Notes 3, 7									
A-400-118	No Variations—Use Basic Parts List									
A-400-119				3855-56	48"					
A-400-120				3855-56	48"		Yes	2345-A		
A-400-121	Notes 7, 10						Yes	2345-A		
A-400-122	Note 11						Yes	2412-A		
A-420	Note 9	2255							3552	6:00
A-440-100	Notes 3, 7, 8	2254				2319		2362-A	3554	6:00
A-440-101	Notes 7, 9	2254					Yes	2345-A	3554	6:00
A-460	Note 9	2256							3800	6:00
A-460-100	Notes 2, 9	2256							3800	12:00
A-490-100	Notes 1, 2	2477	2253				Yes	2345-B		
A-490-101	Note 1	2477	2253				Yes	2345-B		
A-490-102	Notes 1, 7	2477	2253				Yes	2345-B		
A-490-103	Notes 1, 9, 12	2477	2253	3855-56						
A-490-104	Notes 1, 11, 13	2474-A	2253							

---

---

**MODEL VARIATIONS OF A-400 SERIES (Cont.)**

---

---

NOTE 1—Use #3670 Bearing; #2337 Seal; and #21328 Retaining Ring.

NOTE 2—Use #2316 Bearing Plate; #5567-B Shorting Wire Assy.; #P-5566 Grommet; and #5644 Screw.

NOTE 3—Use #2402 Spacer; #5699 Screw (2); #5907 Washer (2); #2096 Washer; and #2403 Link.

NOTE 4—Use #14355 Carburetor.

NOTE 5—Use #2304-A Bracket Assembly, #2434 Bracket, #2440 Guard, #5414-G Screw & L Washer (2) Additional Parts.

NOTE 6—Use #2441 Lever, #5826 Screw, #7262 Spring—Governor.

NOTE 7—Use #3991-1 Air Horn, #10259 Gasket, #4546-A Cleaner Assy., #5906 Washer, #7249 Screw, #7044 Nut, #3990 Gasket.

NOTE 8—Use #4182 Switch, #4188 Plate, #4187 Nut, #5708-A Wire Assembly.

NOTE 9—Use #2338 Spacer, #3136 Seal, Oil.

NOTE 10—Use #2306-E Tank Assembly.

NOTE 11—Use #5597-A Flywheel Assembly.

NOTE 12—Use #3670 Main Bearing.

NOTE 13—Use #2082-A Muffler Assembly.

