

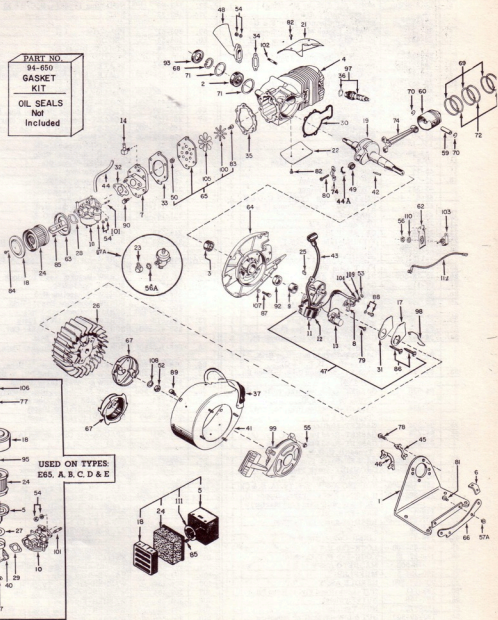


BASIC PARTS LIST

E65 & E65-1000

SECTION II DIVISION
E65
E65-1000
ISSUED FEB. 1960
REVISED AUG. 1966

PART NO.
94-650
GASKET
KIT
OIL SEALS
Not
Included



CLINTON ENGINES CORPORATION

MAQUOKETA, IOWA

PRINTED IN U.S.

E65 & 65-1000 BASIC PARTS LIST

Ref. No.	Part Number	Description	Qty.	Ref. No.	Part Number	Description	Qty.
1.	26-539	BASE-Engine Mounting	1	55.	183-25-500	NUT & L/W-Recoil Mounting Types (D, E, F & G)	4
2.	20-4	BEARING-Ball	1	56.	183-21	NUT-Shorting Switch to Plate	2
3.	20-198-990	BEARING-Needle	1	56A.	183-256	NUT- Lock (Fuel Pump)	1
4.	22-804	BLOCK-Cylinder	1	57.	183-66	NUT-Wing Types (A, B, C, D & E)	1
5.	2-18-500	BODY-Air Cleaner Mounting Types (A, B, C, D & E)	1	57A.	183-33	NUT	4
6.	26-472	BRACE-Engine Mounting Support	2	59.	203-61	PIN-Wrist	1
7.	26-487	BRACKET-Induction Types (A, B, C, D & E)	1	60.	204-54	PISTON-.010 O.S.	1
8.	26-527	BRACKET-Induction Types (F & G)	1	60.	206-54	PISTON-.020 O.S.	1
8.	135-7-500	BREAKER ASSY	1	62.	215-134	PLATE-Shorting Switch Mounting	1
9.	157-29	CAM-Magneto Breaker	1	63.	215-396-500	PLATE ASSY-Air Cleaner Mounting Types (F & G)	1
10.	39-657-500	CARBURETOR-Tillotson HL-44-A	1	64.	215-366-500	PLATE ASSY-Bearing	1
10.	39-659-500	CARBURETOR-Brown 3-CP	1	65.	215-496-500	PLATE ASSY-Reed	1
10.	39-658-500	CARBURETOR-LMG-140-X	1	66.	215-407	PLATE-Mounting Brkt. to Eng. Base	1
10.	39-596	CARBURETOR-Brown CS-15	1	67.	265-197	PULLEY-Starter (Cam type Starter)	1
10.	39-627-500	CARBURETOR-Tillotson HL-13-A	1	67.	265-127-500	PULLEY-Starter ("S" Type Starter)	1
10.	39-772-500	CARBURETOR-Tillotson HC-11-A	1	67A.	200-122-500	PUMP-Fuel	1
11.	61-20	CLIP-Core	1	68.	232-73	RETAINER-Crankshaft	1
11.	135-13-990	COIL	1	69.	148-31	RETAINER-Piston Ring	3
13.	135-29-990	CONDENSER	1	70.	232-40	RETAINER-Wrist Pin	2
14.	89-5	CONNECTOR-Impulse Line	1	71.	232-148	RING-Retaining	2
17.	45-15	COVER-Breaker Box	1	72.	233-45	RING-Piston Standard	3
18.	45-6	COVER-Air Cleaner	1	72.	235-45	RING-.010 O.S.	1
18.	45-381	COVER-Air Cleaner	1	72.	237-45	RING-.020 O.S.	1
18.	45-6	COVER-Air Clin. Ty. (A, B, C, D & E)	1	73.	233-141-500	RING-Chrome Standard	1
18.	45-6	COVER-Air Cleaner Types (F & G)	1	73.	237-141-500	RING-Chrome .020 O.S.	1
19.	46-674	CRANKSHAFT	1	74.	245-118	ROD ASSY-Connecting	1
21.	259-455	DEFLECTOR-Air	1	77.	258-163	SCREW-Air Cleaner Types (A, B, C, D & E)	1
22.	259-6	DEFLECTOR-Air	1	77A.	258-105	SCREW-Air Cleaner Types (A, B, C, D & E)	2
23.	69-278	FITTING-Elbow (Carb.)	1	78.	24-72	SCREW-Bracket Ass'y to Block	4
24.	2-28-990	ELEMENT-Air Cleaner Dry Type	1	79.	258-299	SCREW-Condenser	1
24.	2-175-990	ELEMENT-Air Cleaner Poly-Foam	1	80.	258-901	SCREW-Connecting Rod	2
25.	94-189	FELT-Cam Wiper	1	81.	258-602	SCREW-Mounting Base to Brkt.	4
26.	83-73-500	FLYWHEEL ASSY	1	82.	258-936-500	SCREW-Deflector to Block	4
27.	94-11	GASKET-Air Clin. Ty. (A, B, C, D & E)	1	83.	258-516	SCREW-Reed Valve to Plate	1
28.	94-13	GASKET-Air Clin. to Carb. Ty. (F & G)	1	84.	258-47-500	SCREW & L/W-Air Cleaner Cov. to Bracket Types (F & G)	1
29.	94-459	GASKET-Air Horn to Carburetor Types (A, B, C, D & E)	1	85.	258-102-500	SCREW & L/W-Air Cleaner Plate to Carburetor	2
30.	94-105	GASKET-Bearing Plate	1	86.	258-108-500	SCREW & L/W-Magneto to Brng. Plt.	2
31.	94-241	GASKET-Breaker Box Cover	1	87.	258-587-500	SCREW ASSY-Bearing Plt. to Block	6
32.	94-242	GASKET-Carb. to Induction Brkt. Type (A)	2	88.	258-297	SCREW & L/W-Breaker Points	1
32.	94-378	GASKET-Carbto Induction Brkt. Types (B, C, D, E, F & G)	1	89.	258-280-500	SCREW ASSY-Blw. Hsg. to Brng. Plt.	4
33.	94-312	GASKET-Induction Brkt. to Reed Plt. Type (A)	1	90.	258-834	SCREW ASSY-Induction Brkt. to Blk.	6
33.	94-438	GASKET-Induction Brkt. to Reed Plt. Types (B, C, D & E)	1	92.	94-257	SEAL-Oil (Bearing Plate)	1
33.	94-438	GASKET-Induction Brkt. to Reed Plt. Types (F & G)	1	93.	94-301-990	SEAL-Oil (Cylinder Block)	1
34.	94-394	GASKET-Muffler	1	95.	304-461	SPACER-Air Cleaner Ty. (A, B, C, D & E)	1
35.	94-438	GASKET-Reed Plt. to Blk. Ty. (A)	1	97.	267-73-500	SPARK PLUG	1
35.	94-360	GASKET-Reed Plate to Block Types (B, C, D, E, F & G)	1	98.	263-10	SPRING-Breaker Box Cover	1
36.	94-92-990	GASKET-Spark Plug	1	99.	265-159-500	STARTER-Recoil Types (A, B & C)	1
37.	70-28	GROMMET-Spark Plug	1	99.	263-200-500	STARTER-Recoil, Cam Type Types (D, E, F & G)	1
40.	69-50	HORN-Air Types (A, B, C, D & E)	1	100.	293-165	STARTER-"S" Type Recoil Types (D, E, F & G)	1
41.	259-488-500	HOUSING ASSY-Blw. Ty. (A, B, & C)	1	100.	293-165	STOP-Reed Valve	1
41.	259-396-500	HOUSING ASSY-Housing Types (D, E, F & G with Cam type Starter)	1	101.	24-11	STUD-Carb. Mounting	2
42.	148-4	KEY-Flywheel	1	102.	24-11	STUD-Muffler Mounting	2
43.	307-266-500	LEAD-Magneto Hi-Tension	1	103.	296-53	SWITCH-Shorting	1
44.	158-25	LINE-Impulse	1	104.	307-230	TERMINAL-Jamtie Breaker Pts.	1
44A.	136-77	LINER-Connecting Rod	2	105.	293-96	VALVE-Reed Plate	1
45.	148-43-500	LOCK-Tab P. T. O. Side	1	106.	304-136	WASHER-Air Clin. Ty. (A, B, C, D & E)	1
46.	148-27	LOCK-Tab P. T. O. Side	1	107.	304-134	WASHER-Bearing Plt. to Blk.	12
47.	268-6-500	MAGNETO ASSY	1	108.	304-25	WASHER-Flywheel	1
48.	170-121	MUFFLER	1	109.	304-290	WASHER-Terminal Breaker Pts.	1
49.	20-187-500	NEEDLE ASSY	1	110.	304-368	WASHER-Shorting Switch	1
50.	183-141	NUT- Lock (Reed Viv. to Reed Plt.)	1	111.	304-562	WASHER-Air Cleaner	1
51.	183-158	NUT-Flywheel	1	112.	307-120-500	WIRE ASSY-Shorting	1
53.	183-21	NUT-Terminal	1				
54.	183-29-500	NUT & L/W-(2) Muffler Mounting (2) Carburetor Mounting	4				

CARBURETORS

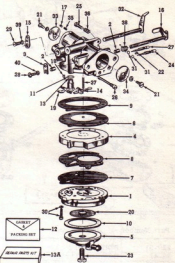
Ref. No.	Part Number	Description	39-627-500 (401042) HL-13-A 39-657-500 (402735) HL-64-A 39-772-500 HC-11-A			39-627-500 (401042) & 39-657-500 (402735)		
			39-627-500 (401042)	39-657-500 (402735)	39-772-500			
1.	320-74	BODY-Fuel Pump	1	1				
2.	28-28	BUSHING-Throttle Shaft	2	2	2			
3.	81-103	CLIP-Throttle Shaft	1	1	1			
4.	45-21	COVER-Disphragm	1	1				
	45-397	COVER-Disphragm			1			
5.	45-242	COVER-Fuel Pump	1	1				
6.	*39-629	DIA PHRAGM-Fuel	1	1	1			
7.	*220-75	DIA PHRAGM-Fuel Pump	1	1	1			
8.	94-228	GASKET-Fuel Pump	1	1				
9.	94-287	GASKET-Fuel Pump Cover	1	1	1			
10.	94-366	GASKET-Fuel Strainer	1	1				
11.	94-358	GASKET-Inlet Seat	1	1	1			
12.	*94-280-500	GASKET & PACKING SET	1	1	1			
13.	*181-63-500	INLET NEEDLE & SEAT	1	1	1			
13A.	39-890	KIT-Repair Parts	1	1				
	39-897	KIT-Repair Parts	1					
	39-913	KIT-Repair Parts	1					
14.	*157-282-500	LEVER-Inlet Control	1	1	1			
15.	157-283	LEVER-Throttle	1	1	1			
16.	6-269-500	LEVER-Throttle (Shaft)	1	1	1			
	6-245-500	LEVER-Throttle (Shaft)			1			
17.	216-63	PIN-Choke Friction	1	1	1			
18.	*216-68	PLUG-Body Channel	1	1	1			
19.	*216-31	PLUG-Body (Welch)	1	1	1			
20.	*257-64	SCREEN-Fuel Inlet	1	1				
21.	258-61-500	SCREW-Screw Shutter	2	2	2			
22.	258-553	SCREW-Drain	1	1	1			
23.	*258-644	SCREW-Pump Cover	1	1	1			
24.	*39-891	SCREW-Idle Adjustment	1	1	1			
	*258-644	SCREW-Idle Adjustment	1	1	1			
25.	*258-654	SCREW-Idle Speed Reg.	1	1	1			
26.	*258-853	SCREW-Inlet Control Lever	1	1	1			
27.	*39-882	SCREW-Main Adjustment	1	1	1			
	*258-645	SCREW-Main Adjustment	1	1	1			
28.	258-652	SCREW-Thr. Shaft Retaining	1	1	1			
29.	*258-851	SCREW-Throttle Lever	1	1	1			
30.	258-647-500	SCREW-Cover (Body)	6	6				
	258-341	SCREW-Cover (Body)			6			
31.	94-279	SEAL-Ring (Adj. Screw)	2	2	2			
32.	6-268-500	SHAFT ASSY-Choke	1	1	1			
	6-244-500	SHAFT ASSY-Choke	1	1	1			
33.	39-241	SHUTTER-Choke	1	1	1			
34.	293-102	SHUTTER-Throttle	1	1	1			
35.	265-239	SPRING-Choke Friction	1	1	1			
36.	265-102	SPRING-Idle Speed Screw	1	1	1			
37.	265-241	SPRING-Inlet Tension	1	1	1			
38.	265-240	SPRING-Throttle Shaft	1	1	1			
39.	*304-390	WASHER-Thr. Lever Lock	1	1	1			
40.	304-315	WASHER-Thr. Shaft Lock	1	1	1			

* Indicates parts in Repair Kit.

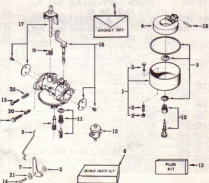
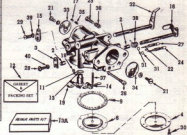
39-658-500 (403891) LMG 140 X

Ref. No.	Part Number	Description	Qty.
1.	25-16-500	BOWL & DRAIN ASSY	1
2.	39-909	BOWL-Drain Ass'y	1
3.	28-49	BUSHING	1
4.	82-2-500	FLOAT & LEVER ASSY	1
5.	*39-928	GASKET KIT	1
6.	39-905	CARBURETOR REPAIR KIT	1
7.	157-324	LEVER-Bell Crank	1
8.	159-122	LINK-Connector	1
9.	*181-2	NEEDLE-Idle Adj.	1
10.	*181-5-500	NEEDLE-Power Adj.	1
11.	*293-163-500	NEEDLE & SEAT ASSY	1
12.	39-938	PLUG KIT	1
13.	230-139-500	FUEL ASSY-Fuel	1
14.	258-763	SCREW-Bell Crank	1
15.	258-60	SCREW-Throttle	1
16.	6-444	SHAFT KIT-Choke	1
17.	6-457	SHAFT KIT-Throttle	1
18.	*6-195	SHAFT-Float Hinge	1
19.	263-84	SPRING-Throttle Return	1
20.	163-82	SPRING-Compression	2
21.	304-475	WASHER-Bell	1

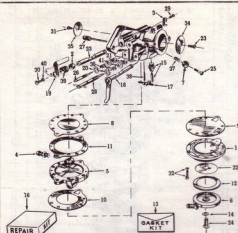
* Indicates parts in Repair Kit



39-772-500



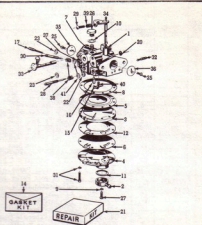
39-596-500 CARBURETOR (Brown 15CS)



Ref. No.	Part Number	Description	Qty.
1.	220-91	BODY-Fuel Pump	1
2.	28-41	BUSHING-Throttle Shaft	2
3.	*81-123	CLIP-Throttle Shaft	1
4.	69-203	CONNECTOR	1
5.	45-272	COVER-Fuel Pump Diaphragm	1
6.	45-273	COVER-Fuel Pump, Strainer	1
7.	39-656	CUP-Idle Speed Screw	1
8.	39-647	DIAHRAGM-Carburetor	1
9.	220-90	DIAHRAGM-Fuel Pump	1
10.	94-365	GASKET-Fuel Pump	1
11.	94-364	GASKET-Carburetor, Diaphragm	1
12.	94-366	GASKET-Fuel Strainer, Cover	1
13.	*94-560	GASKET & PACKING SET	1
14.	94-363	GASKET-Fuel Pump Cov. Screw	1
15.	*181-66-500	INLET NEEDLE-Seat & Gasket	1
16.	39-925	KIT-Repair Parts	1
17.	*157-300	LEVER-Inlet Control	1
18.	6-275-500	LEVER & SHAFT ASSY-Choke	1
19.	157-323	LEVER-Throttle Stop	1
20.	232-110	RING-Spring Retaining	1
21.	94-324	RING-Packing	1
22.	*237-29	SCREEN-Fuel Inlet	1
23.	258-700	SCREW-Choke Shutter	1
24.	258-707	SCREW-Fuel Pump, Cover	1
25.	258-705	SCREW-Idle Speed	1
26.	*258-704	SCREW-Idle Adj. Incl. Ref. No. 20	1
	39-648	SCREW ASSY-Idle Adj. Incl. Ref. No. 20, 21, 36, 41.	1
27.	*39-925	SCREW-Inlet Control Lever Piston	1
28.	*258-703	SCREW-Main Mixture Incl. Ref. No. 20 & Cross Pin	1
	39-649	SCREW-Main Mixture Incl. Ref. Nos. 20, 21, 36, 41.	1
29.	*258-701	SCREW-Throttle Clip Retaining	1
30.	*238-702	SCREW-Throttle Shaft Retaining	1
31.	258-760	SCREW-Throttle Shutter	1
32.	258-708	SCREW & L.W. ASSY-Fuel Pump Body	6
33.	6-251	SHAFT-Throttle	1
34.	293-124	SHUTTER-Choke	1
35.	293-123	SHUTTER-Throttle	1
36.	*263-257	SPRING-Idle Mixture Adj. Main Adj.	2
37.	263-292	SPRING-Idle Speed Screw	1
38.	*263-259	SPRING-Inlet Tension	1
39.	*263-260	SPRING-Throttle Shaft Return	1
40.	*304-390	WASHER-Thr. Lever Retaining Lock	1
41.	*304-419	WASHER-Packing Retaining	1

* Indicates parts in Repair Kit.

39-659-500 CARBURETOR (Brown 3 CP)

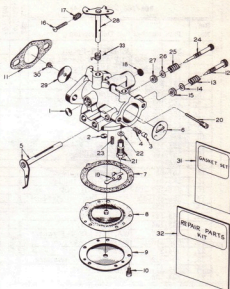


Ref. No.	Part Number	Description	Qty.
1.	28-41	BUSHING-Throttle	1
2.	69-226	CONNECTOR-Fuel Inlet	1
3.	45-284	COVER-Diaphragm	1
4.	220-115	COVER-Fuel Pump	1
5.	39-661-500	DIAHRAGM-Carburetor	1
6.	220-116	DIAHRAGM-Fuel Pump	1
7.	*2-131	FELT-Filter	1
8.	94-304	GASKET-Diaphragm Cov.	1
9.	94-363	GASKET-Fiber	1
10.	94-305	GASKET-Filter Plug Screw	1
11.	94-306	GASKET-Fuel Inlet Connector	1
12.	94-307	GASKET-Fuel Pump Diaphragm	1
13.	94-308	GASKET-Inlet Seat (Not Illus.)	1
14.	*94-561	GASKET & PACKING SET	1
15.	*157-300	LEVER-Fuel Inlet	1
16.	*181-66-500	NEEDLE & SEAT ASSY-Fuel Inlet	1
17.	*203-159-500	PIN-Lever	1
18.	*216-82	PLUG-Weich (Not Illus.)	1
19.	*216-83	PLUG-Weich (Not Illus.)	1
20.	*216-81	PLUG-Weich	1
21.	39-901	REPAIR KIT-Carburetor	1
22.	94-324	RING-Packing	2
23.	232-110	RING-Spring Retaining	2
24.	*257-83	SCREEN-Filter (Not Illus.)	1
25.	*258-702	SCREW-Choke & Thr. Shutter	2
26.	*258-733	SCREW-Filter Plug	1
27.	258-734	SCREW-Fuel Connector	1
28.	*39-669-500	SCREW ASSY IDLE	1
29.	258-705	SCREW-Idle Speed Adj.	1
30.	*39-668-500	SCREW ASSY High Speed	1
31.	258-708	SCREW & WASHER ASSY-Body	4
32.	*39-665	SEAT-Idle Metering Jet	1
33.	6-274-500	SHAFT & LEVER ASSY-Choke	1
34.	6-263-500	SHAFT & LEVER ASSY-Throttle	1
35.	293-124	SHUTTER-Choke	1
36.	293-123	SHUTTER-Throttle	1
37.	263-279	SPRING-Choke Friction	1
38.	*263-257	SPRING-Compression	2
39.	263-258	SPRING-Compression (Idle Speed)	1
40.	*263-259	SPRING-Lever Tension	2
41.	*304-444	WASHER-Packing	2

* Indicates parts in Repair Kit.

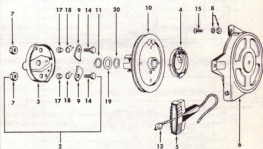
		39-766-990 (HN-3A)			
		39-828-500 (HN-4A)			
		39-875-500 (HN-5A)			
Ref. No.	Part Number	Description	39-766-990	39-828-500	39-875-500
1.	*	PLUG-Order Repair Kit			
2.	*	PLUG-Order Repair Kit			
3.	39-694	PIN-Choke Friction	1	1	1
4.	263-239	SPRING-Choke Friction	1	1	1
5.	6-416-500	SHAFT & LEVER ASS'Y Choke	1	1	1
6.	293-176	SHUTTER-Choke	1	1	1
7.	94-529	GASKET-Diaphragm	1	1	1
8.	*39-860	DIAPHRAGM	1	1	1
9.	45-397	PLATE-Diaphragm Cover	1	1	1
10.	258-941	SCREW-Diaphragm Cover	5	5	5
11.	94-30	GASKET-Flange	1	1	1
12.	*181-89	SCREW-Idle Adj.	1	1	1
13.	*263-216	SPRING-Idle Adj.	1	1	1
14.	304-560	WASHER-Idle Adj. Screw	1	1	1
15.	94-450	PACKING-Idle Adj. Screw	1	1	1
16.	*258-944	SCREW-Idle Speed Reg.	1	1	1
	258-942	SCREW-Idle Speed Reg.			
17.	*263-102	SPRING-Idle Speed Reg.	1	1	1
	263-354	SPRING-Idle Speed Reg.			
18.	*257-95	SCREEN-Inlet Connection	1	1	1
19.	*157-282-500	LEVER-Inlet Control	1	1	1
20.	*258-943	SCREW-Inlet Control Lever Pinion	1	1	1
21.	*293-179	SEAT & GASKET-Inlet Needle	1	1	1
22.	94-358	GASKET-Inlet Seat	1	1	1
23.	*263-241	SPRING-Inlet Tension	1	1	1
24.	*181-90	SCREW-Main Adj.	1	1	1
25.	*263-216	SPRING-Main Adj. Screw	1	1	1
26.	304-560	WASHER-Main Adj. Screw	1	1	1
27.	94-450	PACKING-Main Adj. Screw	1	1	1
28.	6-418-500	LEVER & SHAFT-Throttle	1	1	1
	6-417-500	LEVER & SHAFT-Throttle			
29.	293-177	SHUTTER-Throttle	1	1	1
30.	*258-61-500	SCREW & L'W-Throttle Shutter	1	1	1
31.	*39-933	GASKET & PACKING SET	1	1	1
32.	39-935	REPAIR KIT	1	1	1
33.	*263-355	SPRING-Throttle Shaft	1	1	1

* Indicates parts in Repair Kit.

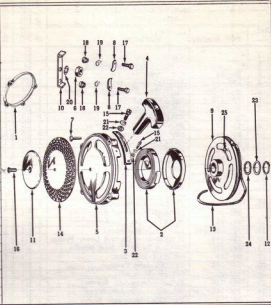


STARTERS

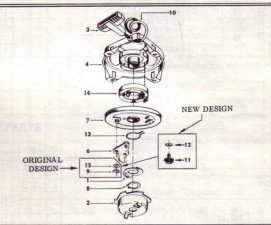
		265-126-500 (403627)		
		265-130-500 (403604)		
Ref. No.	Part Number	Description	265-126-500 (403627)	265-130-500 (403604)
2.	265-129-500	CUP ASS'Y-Starter	1	1
	265-127-500	CUP ASS'Y-Starter		
3.	265-14	CUP-Starter	1	1
4.	265-11-500	CUP ASS'Y-Incl. Recoil Spring	1	1
	265-201-500	CUP ASS'Y-Incl. Recoil Spring		
5.	121-6	HANDLE	1	1
6.	124-29-500	HOUSING ASS'Y	1	1
	124-31-500	HOUSING ASS'Y		
7.	183-56	NUT-Lock	2	2
8.	183-25-500	NUT & L'W ASS'Y	4	4
9.	157-239	PAWL	2	2
10.	219-84-500	PULLEY ASS'Y-Starter Sheave	1	1
11.	232-147	RING-Retaining	1	1
12.	246-7	ROPE-58" Standard Length	1	1
14.	258-180	SCREW-Hex. Hd. Cap	2	2
15.	258-191	SCREW-Projection Weld	4	4
17.	304-82	SPACER-Pawl	2	2
18.	263-164	SPRING-Pawl	2	2
	263-171	SPRING-Pawl		
19.	304-547	WASHER-Retaining	1	1
20.	304-170	WASHER-Wave	1	1



Ref. No.	Part Number	Description	265-159-500 (402453)		265-160-500 (402454)	
			265-159-500 (402453)	265-160-500 (402454)		
1.	304-405	ADAPTER-Recoll	1	1		
2.	263-251-500	CUP ASS'Y-Recoll Spring			1	1
	265-185-500	CUP ASS'Y-Recoll Spring	1	1		
3.	111-13	GUIDE ROPE	1	1		
4.	121-6	HANDLE-Startor	1	1		
5.	124-119	HOUSING	1	1		
6.	183-159	NUT-Hex. (Lock Type)	1	1		
7.	183-182	NUT-Barrel	1	1		
8.	157-230	PAWL STARTER	2	2		
9.	219-131-500	PULLEY	1	1		
10.	215-437	PLATE-Base Pawl	1	1		
11.	232-113	RETAINER-Screen	1	1		
12.	232-109	RING-Retaining	1	1		
13.	246-7	ROPE	1	1		
14.	257-81	SCREEN	1	1		
15.	258-845	SCREW-(Pull Guide)	2	2		
16.	258-723-500	SCREW & OIL CUP	1	1		
17.	258-851-500	SCREW-Plate to Flywheel	2	2		
18.	304-524	SPACER-Pawl	2	2		
19.	263-171	SPRING-Pawl	2	2		
	263-164	SPRING-Pawl	2	2		
20.	304-337	WASHER LOCK-Flywheel	1	1		
21.	304-318	WASHER-Lock	2	2		
22.	304-377	WASHER-Plam	2	2		
23.	304-412	WASHER-Steel Retaining	1	1		
24.	304-411	WASHER-Wave	1	1		
25.	304-528	WASHER-Lead	1	1		



Ref. No.	Part Number	Description	265-215-500		265-200-500	
			265-215-500	265-200-500		
1.	157-2	ACTUATOR	1			
	157-1	ACTUATOR		1		
2.	*265-197	CUP-Startor	1			
	*265-198	CUP-Startor		1		
3.	121-6	HANDLE	1	1		
4.	124-8-500	HOUSING	1	1		
	124-6-500	HOUSING			1	1
6.	157-129-500	PAWL & PIN ASS'Y	1			
	157-352-500	PAWL & PIN ASS'Y			1	1
7.	219-154-500	PULLEY ASS'Y	1	1		
8.	232-147	RING-Retaining	1	1		
9.	232-35	RING-Retaining	1	1		
10.	246-7	ROPE	1	1		
11.	258-985	SCREW	1	1		
12.	304-824	SPACER	1	1		
13.	263-133	SPRING-Actuator	1	1		
14.	263-79	SPRING-Recoll	1	1		
15.	304-320	WASHER	1	1		



Ref. No.	Part Number	Description	265-208-500	
			265-208-500	
1.	20-208	BALL-Bearing		2
2.	81-167	CLIP-Handle		1
3.	45-384-500	COVER ASS'Y-Bottom		1
4.	108-259	GEAR		1
5.	124-182-500	HOUSING ASS'Y		1
6.	265-217-500	PLUNGER ASS'Y		1
7.	265-241	RATCHET & SPRING KIT		1
8.	232-157	RING-Retaining Ball		1
9.	244-47	RIVET-Clip to Handle		1
10.	258-918-500	SCREW & L/W ASS'Y-Cover		4
11.	263-336-500	SPRING ASS'Y-Power		1

