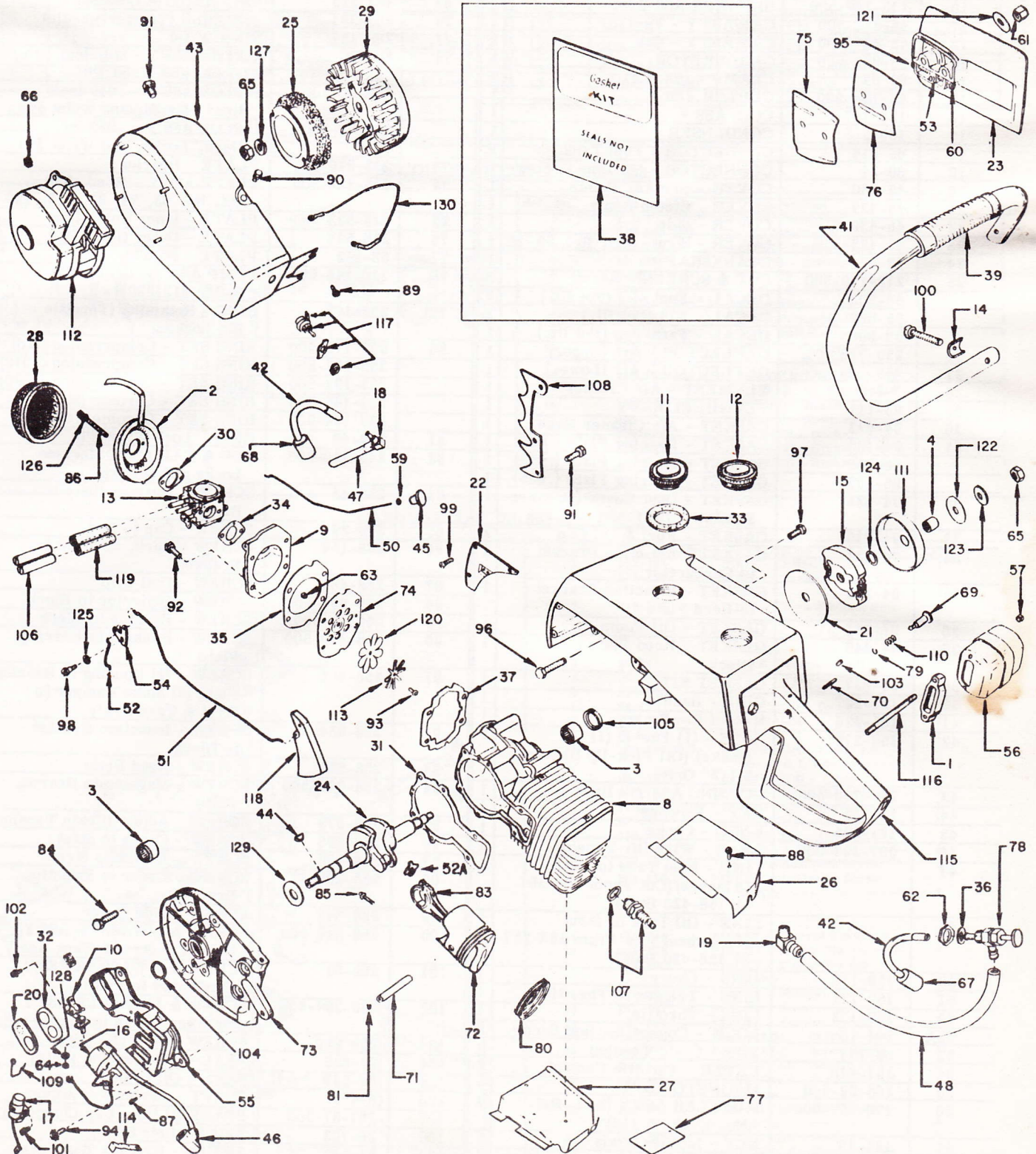


CHAINSAW BASIC PARTS LIST E75-1000

Section II
Div. E75-1000
Issued Sept. 1965



CHAINSAW E75-1000 BASIC PARTS LIST

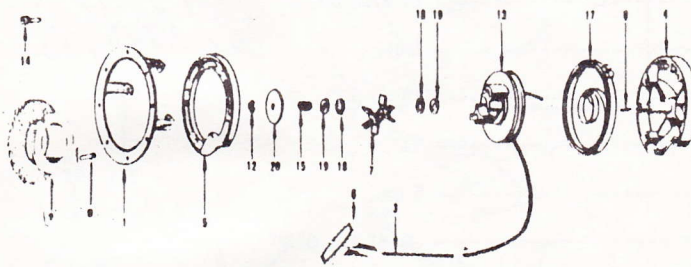
Ref. No.	Part Number	Description	Qty.	Ref. No.	Part Number	Description	Qty.
1	1-108	ADAPTOR - Muffler to Block	1	64	183-21	NUT - Hex #8-32 (Term.)	1
2	2-216-500	BASE - Air Cleaner - Incl. Strap	1	65	183-158	NUT - Hex 7/16-20 (1-Flywheel End) (1-Clutch End)	2
3	2-240	BEARING - (Sleeve) Block And Bearing Plate	2	66	183-25-500	NUT & L'WASHER ASS'Y Recoil Adaptor to Housing	4
4	20-242	BEARING - Needle (Sprocket)	1	67	25-28	PICK-UP WITH SCREEN - Oil	1
8	22-836-500	BLOCK - Cylinder	1	68	25-38	PICK-UP WITH SCREEN - Fuel	1
9	26-696	BRACKET - Induction	1	69	203-223	PIN - Throttle Locking	1
10	135-269-500	BREAKER ASS'Y	1	70	203-224	PIN - Roll (Trigger Handle)	1
11	45-426-500	CAP ASS'Y - Fuel	1	71	203-157	PIN - Wrist	1
12	45-427-500	CAP ASS'Y - Oil	1	72	204-90-500	PISTON ASS'Y - Std. Incl. Rings, Locks, and Wrist Pin	1
13	39-963-500	CARBURETOR	1		206-90-500	PISTON ASS'Y - .010 Incl. Rings, Locks, and Wrist Pin	
14	81-87	CLAMP - (Handle)	2		207-90-500	PISTON ASS'Y - .020 Incl. Rings, Locks, and Wrist Pin	
15	44-104-990	CLUTCH ASS'Y	1	73	215-519-500	PLATE - Bearing	1
16	135-267	COIL ASS'Y	1	74	215-322-500	PLATE ASS'Y - Reed - Incl. Ref. No. 63, 74, 93, 113, 120	1
17	135-268	CONDENSER	1	75	215-523	PLATE - Inner Guide Bar	1
18	69-314	CONNECTOR - Fuel Tank	1	76	215-524	PLATE - Outer Guide Bar	1
19	69-24	CONNECTOR - Oil Line to Strut	1	77	58-612	PLATE - Name	1
20	45-430	COVER - Breaker Points	1	78	220-144-500	PUMP ASS'Y - Oil (Pump Button #121-201)	1
21	45-437	COVER - Clutch Ass'y	1	79	232-173	RING - Retaining (Throttle Pin Locking)	1
22	45-439	COVER - Side	1	80	233-115-500	RING SET - Compression (Std)	1
23	45-425-500	COVER - Strut - Incl. Ref. 53, 60	1		235-127-500	RING SET - Compression (.010)	
24	46-876	CRANKSHAFT	1		237-127-500	RING SET - Compression (.020)	
25	219-169-500	CUP & SCREEN - Recoil	1		233-144-500	RING SET - Chrome (Std)	
	58-603	DECAL - Fuel Mix (Not Ill.)	1		237-144-500	RING SET - Chrome (.020)	
	58-599	DECAL - E75 (Not Ill.)	1	81	232-40	RING - Lock Wrist Pin	2
	58-596	DECAL - Tank Top (Not Ill.)	1	83	245-110-500	ROD & CAP ASS'Y (Include Locks and Screws)	1
26	259-768	DEFLECTOR - Air (Upper)	1	84	258-43	SCREW - Bearing Plate to Block	6
27	259-769	DEFLECTOR - Air (Lower)	1	85	258-29	SCREW - Cap to Rod	2
28	2-217	ELEMENT - Air Cleaner	1	86	258-154	SCREW - Carb. to Induction Bracket	2
29	83-111	FLYWHEEL ASS'Y	1	87	258-483	SCREW - Coil Clip	1
30	94-622	GASKET - Air Cleaner Base	1	88	258-936-500	SCREW - Deflector to Block	4
31	94-105	GASKET - Bearing Plate (.030)	1	89	258-40-500	SCREW - Housing to Block	3
	93-105	GASKET - Bearing Plate (.025)	1	90	258-280-500	SCREW - Housing to Bearing Plate	2
	95-105	GASKET - Bearing Plate (.035)	1	91	258-602	SCREW - (2) Housing to Bearing Plate (3) Spike Bumper to Strut & Tank Ass'y	6
32	94-624	GASKET - Dust Cover (Breaker Points)	1	92	258-834	SCREW - Induction Bracket to Block	4
33	94-639	GASKET - Fuel & Oil Cap	2	93	258-516	SCREW - Reed Plate	1
34	94-621	GASKET - Induction Bracket to Carburetor	1	94	258-998-500	SCREW - Magneto to Bearing Plate	3
35	94-259	GASKET - Induction Bracket to Reed Plate	1	95	258-973	SCREW - Adjust (Chain Tension)	1
36	94-281	GASKET - Oil Pump	1	96	258-996	SCREW - Cover to Strut	2
37	94-445	GASKET - Reed Plate to Block	1	97	258-750	SCREW - Engine to Strut	4
38	94-627	GASKET KIT	1	98	258-205	SCREW - Lever to Induction Bracket	1
39	121-227	GRIP - Handle	1	99	258-848	SCREW - Side Cover	3
41	121-226	HANDLE - Frame	1	100	258-569-500	SCREW & L'WASHER ASS'Y Handle to Strut & Tank Ass'y	2
42	158-274	HOSE - (1) Fuel & (1) Oil (Snake) (Oil Pick-Up Requires 3 1/2" Only)	2	101	258-92	SCREW & L'WASHER ASS'Y Condenser to Plate	1
43	259-758-500	HOUSING ASS'Y - Blower	1	102	258-297-500	SCREW & L'WASHER ASS'Y Breaker Points to Breaker Box	1
44	148-45	KEY - Flywheel	1	103	258-999	SCREW SET - Idle Speed Adj.	1
45	121-225	KNOB - Choke	1	104	94-623	SEAL - Oil (Bearing Plate)	1
46	307-297-500	LEAD - Wire (Hi-Tension)	1	105	94-257	SEAL - Oil (Block)	1
47		LINE - Fuel Tank to Carb. (6 Inches) (Cut From 158-357 or 158-420 Bulk)	1	106	6-475	SHAFT - Carburetor Adjust	2
48		LINE - Oil Tank to Strut (14 Inches) (Cut From 158-357 or 158-420 Bulk)	1	107	267-87-500	SPARK PLUG - CJ8 Champion	1
50	159-170	LINK - Choke	1	108	26-703	SPIKE BUMPER	1
51	159-171	LINK - Trigger to Throttle	1	109	81-182	SPRING - Breaker Box Cover	1
52	159-173	LINK - Throttle	1	110	263-386	SPRING - Throttle Lock	1
52A	304-10	LOCK - Connecting Rod Screw	2	111	106-427-500	SPROCKET ASS'Y - .404 Pitch 7 Tooth (Incl. Bearing)	1
53	69-184	LUG - Chain Tension	1				
54	157-446	LEVER - Throttle Control	1				
55	268-29-500	MAGNETO ASS'Y	1				
56	170-157-500	MUFFLER ASS'Y (Incl. Ref. No. 1, 57, & 116)	1				
57	183-33	NUT - Muffler Studs	2				
59	183-248	NUT - Lock Choke Link to Knob	1				
60	183-253	NUT - Chain Tension Lug	1				
61	183-190	NUT - Cover to Strut Stud	2				
62	183-12	NUT - Oil Pump	1				
63	183-141	NUT - Reed Plate	1				

CHAINSAW E75-1000 BASIC PARTS LIST

No.	Part Number	Description	Qty.	Ref. No.	Part Number	Description	Qty.
112	265-260-500	STARTER ASS'Y - Does Not Include Mounting Adaptors	1	122	304-634	WASHER - Outside	1
113	293-97	STOP - Reed	1	123	304-330	WASHER - Sprocket Ass'y to Crankshaft	1
114	81-183	STRAP - Coil Clip	1	124	304-642	WASHER FIBER - Clutch Inside	1
115	26-698	STRUT AND TANK ASS'Y	1	125	304-88	WASHER - Throttle Lever	1
116	24-77	STUD - Muffler	2	126	304-28	WASHER - Lock Carburetor to Induction Bracket	2
117	266-53	SWITCH	1	127	304-25	WASHER - Lock (Flywheel)	1
118	157-442	TRIGGER - Throttle	1	128	304-652	WASHER - Lock Terminal	1
119	158-444	TUBING EXT. CARB. - Screws	2	129	304-638	WASHER - Thrust	2
120	293-96	VALVE - Reed	1	130	307-120-500	WIRE ASS'Y - Shorting	1
121	304-636	WASHER - Flat (Cover to Strut)	2				

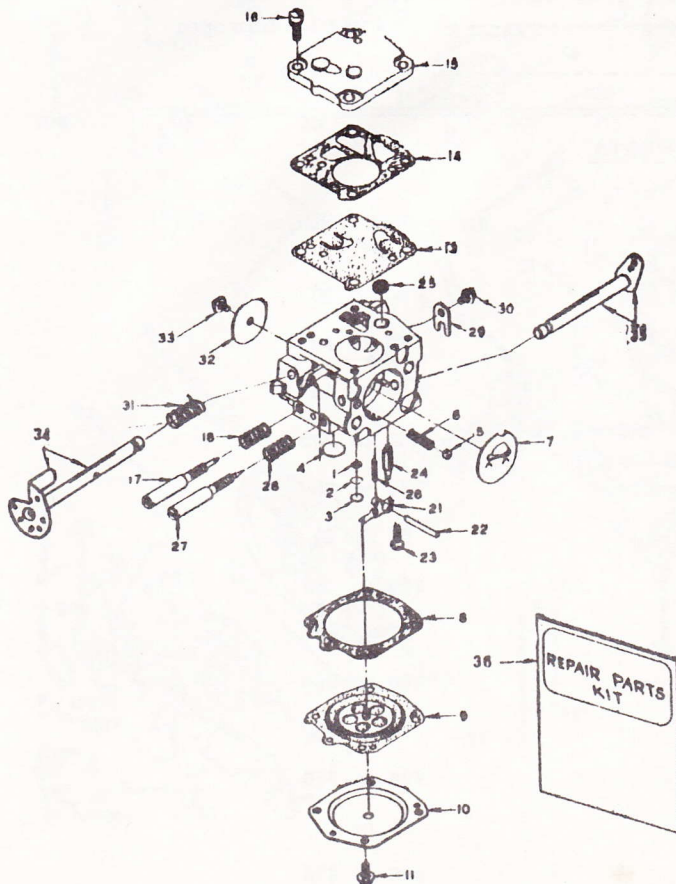
page 4 for variations.

RECOIL STARTER 265-260-500



Ref. No.	Part Number	Description	Qty.
1	1-108	BASE - Mounting	1
2	219-169-500	CUP & SCREEN	1
3	246-23	CORD - Starter Ass'y	1
4	45-185	COVER - Housing	1
5	1-56	FLANGE - Cover Mtg.	1
6	121-6	HANDLE - Starter	1
7	157-451-500	SHOE ASS'Y - Friction	1
8	203-94	PIN - Centering	1
9	203-134	PIN - Roll Startercup	1
12	232-74	RING - Retaining	1
13	265-120	ROTOR - Starter	1
14	258-185-500	SCREW & L'WASHER ASS'Y R. H. M. #10-24x3/4	4
15	263-181	SPRING - Brake	1
17	263-176	SPRING - Rewind	1
18	304-284	WASHER - Brake	2
19	304-285	WASHER - Brake (Slotted)	2
20	304-302	WASHER - Brake Retainer	1

CARBURETOR 39-963-500 (HS-17A)



Ref. No.	Part Number	Description	Qty.
1	257-108	BODY - Channel Screen	1
2	232-174	BODY - Channel Screen Ret. Ring	1
3	216-106	*BODY - Channel Welch Plug (Small)	1
4	216-105	*BODY - Channel Welch Plug (Large)	1
5	20-241	CHOKE - Friction Ball	1
6	263-239	CHOKE - Friction Spring	1
7	293-186	CHOKE - Shutter	1
8	94-626	*DIAPHRAGM - Gasket	1
9	220-162-500	*DIAPHRAGM	1
10	45-433	DIAPHRAGM - Cover	1
11	258-558-500	DIAPHRAGM - Cover Ret. Screw & L'Washer	4
12	60-316	CONNECTOR - Elbow	1
13	220-161	*FUEL PUMP - Diaphragm	1
14	94-025	*FUEL PUMP - Gasket	1
15	45-432	FUEL PUMP - Cover	1
16	258-941	FUEL PUMP - Cover Ret. Screw & L'Washer	4
17	181-94	*IDLE - Adjustment Screw	1
18	263-216	*IDLE - Adjustment Screw Spring	1
21	157-444	*INLET - Control Lever	1
22	203-226	*INLET - Pinion Pin	1
23	258-1002	*INLET - Pinion Pin Ret. Screw	1
24	181-92	*INLET - Needle	1
25	257-107	*INLET - Screen	1
26	263-389	*INLET - Tension Spring	1
27	181-93	*MAIN ADJ. - Screw	1
28	263-216	*MAIN ADJ. - Screw Spring	1
29	81-181	THROTTLE - Shaft Clip	1
30	258-1001-500	*THROTTLE - Shaft Clip Ret. Screw	1
31	263-388	*THROTTLE - Shaft Return Spring	1
32	293-185	THROTTLE - Shutter	1
33	258-1001-500	*THROTTLE - Shutter Screw	1
34	6-476-500	SHAFT & LEVER - Throttle	1
35	6-477-500	SHAFT & LEVER - Choke	1
36	39-964	REPAIR PARTS KIT	1

(* Indicates contents of Repair Parts Kit.

E 75-1000
MODEL VARIATION

- E-75-1105 - Refer to standard E-75-1000 Series Chainsaw Parts List except for decals 58-628 and 58-630.
E-75-1150 - Refer to standard E-75-1000 Series Chainsaw Parts List except for decals 58-625 and 58-627.

E75 SPECIFICATIONS

BORE AND STROKE -----	1.875" x 1.625"
CUTTING CHAIN SPEED -----	2600 FPM
CHAIN PITCH -----	.404"
DISPLACEMENT -----	4.48 Cu. In.
CUTTING R. P. M. -----	5500
ENGINE WEIGHT -----	17 1/2 lbs.
FUEL TANK CAPACITY-----	1 qt.
GUIDE BAR CAPACITY -----	18" - 36"
MAGNETO TIMING (B. T. D. C.)-----	31 ⁰
OIL TANK CAPACITY-----	8 oz.
SPARK PLUG GAP-----	.028" to .032"
SPARK PLUG -----	Champion CJ-8
BREAKER POINT SETTING-----	.014" to .016"
CRANKSHAFT END PLAY -----	.006" to .018"
CARBURETOR SETTING - Idle Needle-----	1 to 1 1/2 turn open
CARBURETOR SETTING - High Speed Needle-----	3/4 to 1 1/4 turn open
IDLE R. P. M. NO LOAD -----	1800 to 2000

TORQUE DATA

	Inch	lbs.
1. Bearing plate to block screw	80	to 90
2. Blower housing to bearing plate screws	80	to 90
3. Carburetor to induction bracket screws	30	to 40
4. Crankshaft nut - Clutch end.	270	to 300
5. Conn. rod cap to rod screw (Forged Aluminum)	80	to 90
5A Conn. rod cap to rod screw (Die Cast)	55	to 65
6. Flywheel to crank nut	250	to 300
7. Induction bracket to block screw	55	to 65
8. Main strut to block screw	250	to 280
9. Muffler to block nut	50	to 60
10. Spark plug cylinder	230	to 270
11. Stator to bearing plate screw	45	to 65
12. Stud - Guide Bar nut	250	to 270