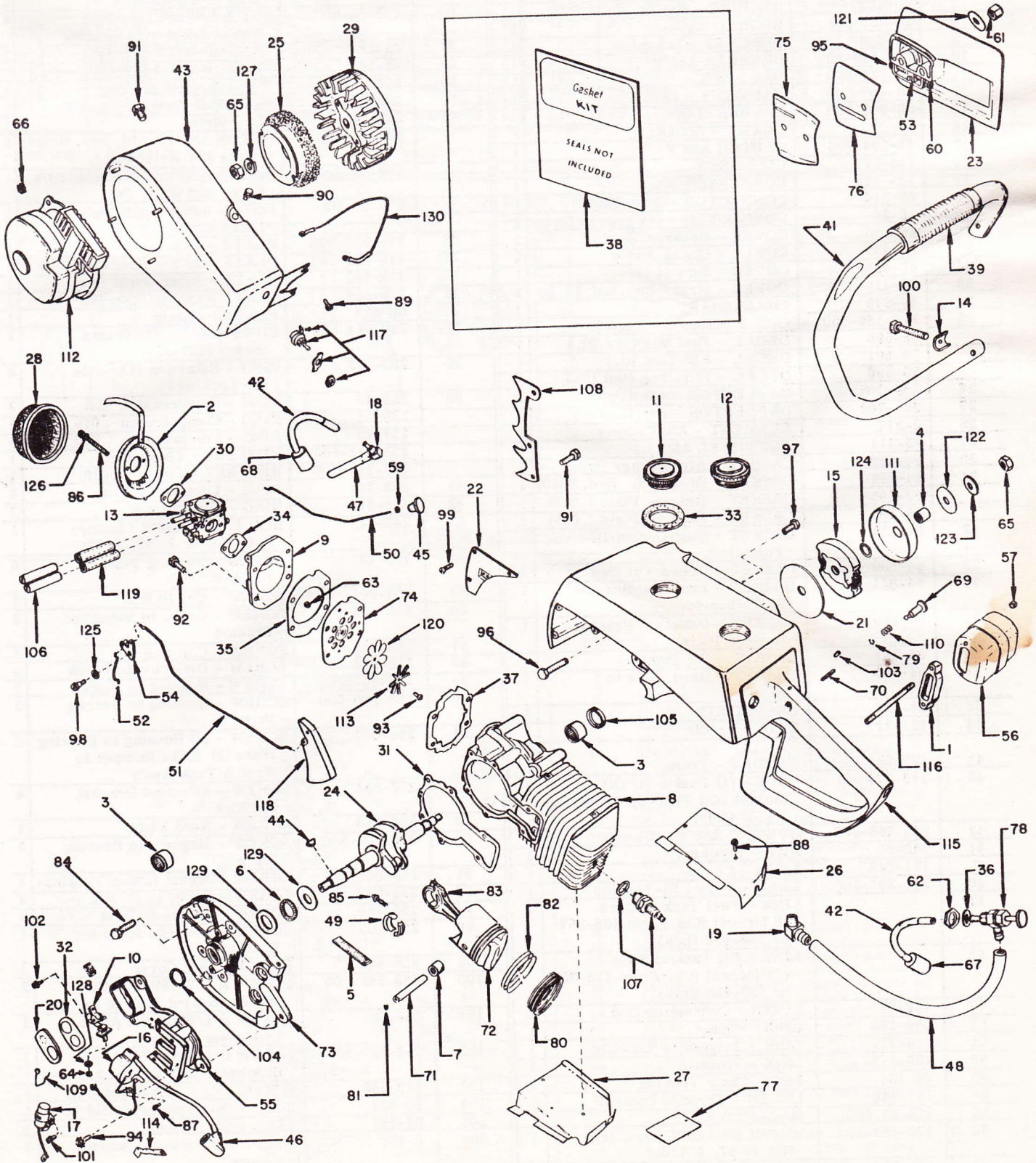


Clinton **BASIC PARTS LIST** E95-1000

Section II
Div. E95-1000
Issued Sept. 1965



CLINTON ENGINES CORPORATION
MAQUOKETA, IOWA

Printed in U.S.A.

CHAINSAW E95 BASIC PARTS LIST

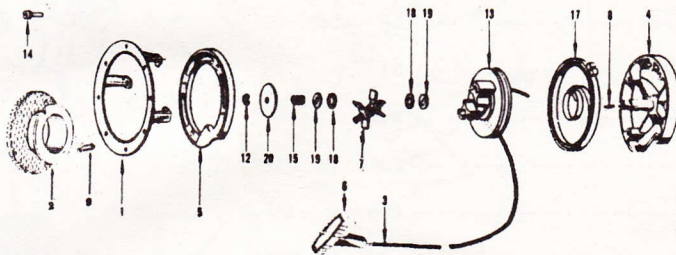
Ref. No.	Part Number	Description	Qty.	Ref. No.	Part Number	Description	Qty.
1	1-108	ADAPTOR - Muffler to Block	1	60	183-253	NUT - Chain Tension Lug	1
2	2-216-500	BASE - Air Cleaner - Incl. Strap	1	61	183-190	NUT - Cover to Strut Stud	2
3	20-237	BEARING - (Needle) Block And Bearing Plate	2	62	183-12	NUT - Oil Pump	1
4	20-242	BEARING - Needle (Sprocket)	1	63	183-141	NUT - Reed Plate	1
5	20-197-500	BEARING ASS'Y - Needle (Rod)	1	64	183-21	NUT - Hex #8-32 (Term.)	1
6	20-238	BEARING - Thrust (Needle)	2	65	183-158	NUT - Hex 7/16-20 (1-Flywheel End) (1-Clutch End)	2
7	20-226	BEARING - Needle Wrist Pin	1	66	183-25-500	NUT & L'WASHER ASS'Y Recoil Adapter to Housing	4
8	22-835-500	BLOCK - Cylinder	1	67	25-28	PICK-UP WITH SCREEN - Oil	1
9	26-696	BRACKET - Induction	1	68	25-38	PICK-UP WITH SCREEN - Fuel	1
10	135-269-500	BREAKER ASS'Y	1	69	203-223	PIN - Throttle Locking	1
11	45-426-500	CAP ASS'Y - Fuel	1	70	203-224	PIN - Roll (Trigger Handle)	1
12	45-427-500	CAP ASS'Y - Oil	1	71	203-212	PIN - Wrist	1
13	39-963-500	CARBURETOR	1	72	204-85-500	PISTON ASS'Y - Std. Incl. Rings, Locks and Wrist Pin	1
14	81-87	CLAMP - (Handle)	2		206-85-500	PISTON ASS'Y - .010 Incl. Rings, Locks and Wrist Pin	1
15	44-104-990	CLUTCH ASS'Y	1		207-85-500	PISTON ASS'Y - .020 Incl. Rings, Locks and Wrist Pin	1
16	135-267	COIL ASS'Y	1	73	215-518-500	PLATE - Bearing	1
17	135-268	CONDENSER	1	74	215-322-500	PLATE ASS'Y - Reed Complete	1
18	69-314	CONNECTOR - Fuel Tank	1	75	215-523	PLATE - Inner Guide Bar	1
19	69-24	CONNECTOR - Oil Line to Strut	1	76	215-524	PLATE - Outer Guide Bar	1
20	45-430	COVER - Breaker Points	1	77	58-612	PLATE - Name	1
21	45-437	COVER - Clutch Ass'y	1	78	220-144-500	PUMP ASS'Y - Oil (Pump Button #121-201)	1
22	45-439	COVER - Side	1	79	232-173	RING - Retaining (Throttle Pin Locking)	2
23	45-425-500	COVER - Strut - Incl. Ref. 53, 60	1	80	233-45	RING - Compression Std.	3
24	46-875	CRANKSHAFT	1		235-45	RING - Compression .010	3
25	219-169-500	CUP & SCREEN - Recoil	1		237-45	RING - Compression .020	3
	58-598	DECAL - Fuel Mix (Not Ill.)	1		233-141-500	RING SET - Chrome Std.	1
	58-601	DECAL - E95 (Not Ill.)	1		237-141-500	RING SET - Chrome .020	1
	58-596	DECAL - Tank Top (Not Ill.)	1	81	232-164	RING - Lock Wrist Pin	2
26	259-768	DEFLECTOR - Air (Upper)	1	82	148-31	RING - Piston Lock	3
27	259-769	DEFLECTOR - Air (Lower)	1	83	245-120	ROD & CAP ASS'Y (Include Ref. No. 5, 7, 49, & 85)	1
28	2-217	ELEMENT - Air Cleaner	1	84	258-43	SCREW - Bearing Plate to Block	6
29	83-111	FLYWHEEL ASS'Y	1	85	258-901	SCREW - Cap to Rod	2
30	94-622	GASKET - Air Cleaner Base	1	86	258-154	SCREW - Carb. to Induction Bracket	2
31	94-105	GASKET - Brng. Plt. (Std. .030)	1	87	258-483	SCREW - Coil Cup	1
	93-105	GASKET - Bearing Plate (.025)	1	88	258-936-500	SCREW - Deflector to Block	4
	95-105	GASKET - Bearing Plate (.035)	1	89	258-40-500	SCREW - Housing to Block	3
32	94-624	GASKET - Dust Cover (Breaker Points)	1	90	258-280-500	SCREW - Housing to Bearing Plate	2
33	94-639	GASKET - Fuel & Oil Cap	2	91	258-602	SCREW - (2) Housing to Bearing Plate (3) Spike Bumper to Strut & Tank Ass'y	5
34	94-621	GASKET - Induction Bracket to Carburetor	1	92	258-834	SCREW - Induction Bracket to Block	4
35	94-259	GASKET - Induction Bracket to Reed Plate	1	93	258-516	SCREW - Reed Plate	1
36	94-281	GASKET - Oil Pump	1	94	258-998-500	SCREW - Magneto to Bearing Plate	3
37	94-445	GASKET - Reed Plate to Block	1	95	258-973	SCREW - Adjust (Chain Tension)	1
38	94-627	GASKET KIT	1	96	258-996	SCREW - Cover to Strut	2
39	121-227	GRIP - Handle	1	97	258-750	SCREW - Engine to Strut	4
41	121-226	HANDLE - Frame	1	98	258-205	SCREW - Lever to Induction Bracket	1
42	158-274	HOSE - (1) Fuel & (1) Oil (Snake) (Oil Pick-Up Requires 3 1/2" Only)	2	99	258-848	SCREW - Side Cover	3
43	259-758-500	HOUSING ASS'Y - Blower	1	100	258-569-500	SCREW & L'WASHER ASS'Y Handle to Strut & Tank Ass'y	2
44	148-45	KEY - Flywheel	1	101	258-92	SCREW & L'WASHER ASS'Y Condenser to Plate	1
45	121-225	KNOB - Choke	1	102	258-297-500	SCREW & L'WASHER ASS'Y Breaker Points to Breaker Box	1
46	307-297-500	LEAD - Wire (Hi-Tension)	1	103	258-999	SCREW SET - Idle Speed Adj.	1
47		LINE - Fuel Tank to Carb. (6 Inches) (Cut From 158-357 or 158-420 Bulk)	1	104	94-623	SEAL - Oil (Bearing Plate)	1
48		LINE - Oil Tank to Strut (14 Inches) (Cut From 158-357 or 158-420 Bulk)	1	105	94-257	SEAL - Oil (Block)	1
49	136-77	LINER - Connecting Rod	2	106	6-475	SHAFT - Carburetor Adjust. Screws.	2
50	159-170	LINK - Choke	1	107	267-87-500	SPARK PLUG - CJ8 Champion	1
51	159-171	LINK - Trigger to Throttle	1	108	26-703	SPIKE BUMPER	1
52	159-173	LINK - Throttle	1				
53	69-184	LUG - Chain Tension	1				
54	157-446	LEVER - Throttle Control	1				
55	268-29-500	MAGNETO ASS'Y	1				
56	170-157-500	MUFFLER ASS'Y (Incl. Ref. No. 1, 57, & 116)	1				
57	183-33	NUT -Muffler Studs	2				
59	183-248	NUT - Lock Choke Link to Knob	1				

CHAINSAW E95 BASIC PARTS LIST

Ref. No.	Part Number	Description	Qty.	Ref. No.	Part Number	Description	Qty.
109	81-182	SPRING - Breaker Box Cover	1	120	293-96	VALVE - Reed	1
110	263-386	SPRING - Throttle Lock	1	121	304-636	WASHER - Flat (Cover to Strut)	2
111	106-427-500	SPROCKET ASS'Y - .404 Pitch 7 Tooth	1	122	304-634	WASHER - Outside	1
112	265-260-500	STARTER ASS'Y - Does Not Include Mounting Adaptors	1	123	304-330	WASHER - Sprocket Ass'y to Crankshaft	1
113	293-97	STOP - Reed	1	124	304-642	WASHER FIBRE - Clutch Inside	1
114	81-183	STRAP - Coil Clp	1	125	304-88	WASHER - Throttle Lever	1
115	26-698	STRUT AND TANK ASS'Y	1	126	304-28	WASHER - Lock Carburetor to Induction Bracket	2
116	24-77	STUD - Muffler	2	127	304-25	WASHER - Lock (Flywheel)	1
117	266-53	SWITCH	1	128	304-652	WASHER - Lock Terminal	1
118	157-442	TRIGGER - Throttle	1	129	304-633	WASHER - Thrust	4
119	158-444	TUBING EXT. CARB. - Screws	2	130	307-120-500	WIRE ASS'Y - Shorting	1

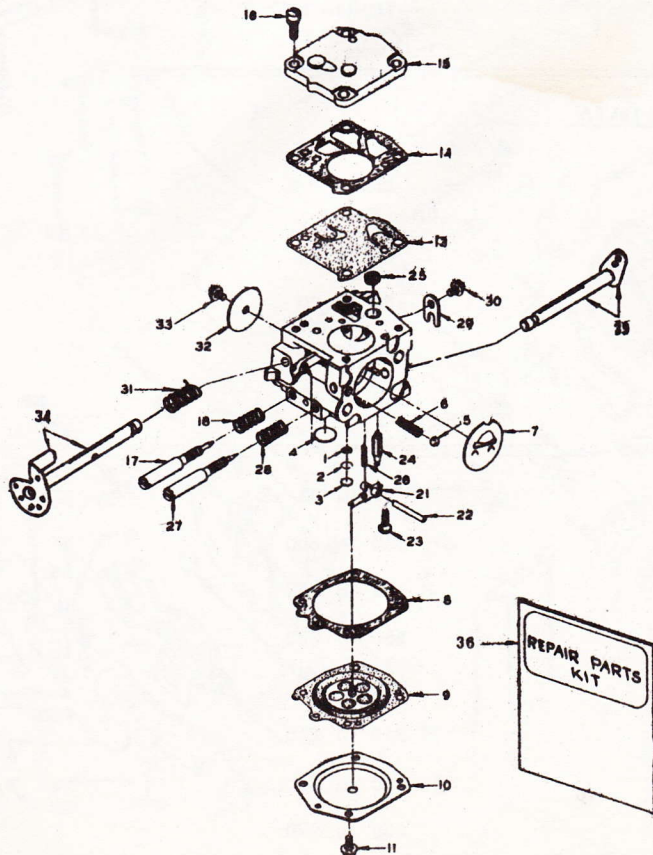
See page 4 for variations.

RECOIL STARTER 265-260-500



Ref. No.	Part Number	Description	Qty.
1	1-108	BASE - Mounting	1
2	219-169-500	CUP & SCREEN	1
3	246-23	CORD - Starter Ass'y	1
4	45-185	COVER - Housing	1
5	1-56	FLANGE - Cover Mtg.	1
6	121-6	HANDLE - Starter	1
7	157-451-500	SHOE ASS'Y - Friction	1
8	203-94	PIN - Centering	1
9	203-134	PIN - Roll Startercup	1
12	232-74	RING - Retaining	1
13	265-120	ROTOR - Starter	1
14	258-185-500	SCREW & L'WASHER ASS'Y R. H. M. #10-24x3/4	4
15	263-161	SPRING - Brake	1
17	263-176	SPRING - Rewind	1
18	304-284	WASHER - Brake	2
19	304-285	WASHER - Brake (Slotted)	2
20	304-302	WASHER - Brake Retainer	1

CARBURETOR 39-963-500 (HS-17A)



Ref. No.	Part Number	Description	Qty.
1	257-108	BODY - Channel Screen	1
2	232-174	BODY - Channel Screen Ret. Ring	1
3	216-106	*BODY - Channel Welch Plug (Small)	1
4	216-105	*BODY - Channel Welch Plug (Large)	1
5	20-241	CHOKE - Friction Ball	1
6	263-239	CHOKE - Friction Spring	1
7	293-186	CHOKE - Shutter	1
8	94-626	*DIAPHRAGM - Gasket	1
9	220-162-500	*DIAPHRAGM	1
10	45-433	DIAPHRAGM - Cover	1
11	258-558-500	DIAPHRAGM - Cover Ret. Screw & L'Washer	4
12	69-316	CONNECTOR - Elbow	1
13	220-161	*FUEL PUMP - Diaphragm	1
14	94-625	*FUEL PUMP - Gasket	1
15	45-432	FUEL PUMP - Cover	1
16	258-941	FUEL PUMP - Cover Ret. Screw & L'Washer	4
17	181-94	*IDLE - Adjustment Screw	1
18	263-216	*IDLE - Adjustment Screw Spring	1
21	157-444	*INLET - Control Lever	1
22	203-226	*INLET - Pinion Pin	1
23	258-1002	*INLET - Pinion Pin Ret. Screw	1
24	181-92	*INLET - Needle	1
25	257-107	*INLET - Screen	1
26	263-389	*INLET - Tension Spring	1
27	181-93	*MAIN ADJ. - Screw	1
28	263-216	*MAIN ADJ. - Screw Spring	1
29	81-181	THROTTLE - Shaft Clip	1
30	258-1001-500	*THROTTLE - Shaft Clip Ret. Screw	1
31	263-388	*THROTTLE - Shaft Return Spring	1
32	293-185	THROTTLE - Shutter	1
33	258-1001-500	*THROTTLE - Shutter Screw	1
34	6-476-500	SHAFT & LEVER - Throttle	1
35	6-477-500	SHAFT & LEVER - Choke	1
36	39-964	REPAIR PARTS KIT	1

(*) Indicates contents of Repair Parts Kit.

E 95-1000
MODEL VARIATION

- E-95-1105 - Refer to standard E-95-1000 Series Chainsaw Parts List except for decals 58-629 and 58-630.
E-95-1150 - Refer to standard E-95-1000 Series Chainsaw Parts List except for decals 58-626 and 58-627.

E95 SPECIFICATIONS

BORE AND STROKE -----	2.125" x 1.625"
CUTTING CHAIN SPEED -----	3400 FPM
CHAIN PITCH -----	.404"
DISPLACEMENT -----	5.76 Cu. In.
CUTTING R. P. M. -----	7200
ENGINE WEIGHT -----	17 1/2 lbs.
FUEL TANK CAPACITY -----	1 qt.
GUIDE BAR CAPACITY -----	18" - 36"
MAGNETO TIMING (B. T. D. C.) -----	31°
OIL TANK CAPACITY -----	8 oz.
SPARK PLUG GAP -----	.028" to .032"
SPARK PLUG -----	Champion CJ-8
BREAKER POINT SETTING -----	.014" to .016"
CRANKSHAFT END PLAY -----	.003" to .020"
CARBURETOR SETTING - Idle Needle -----	1 to 1 1/2 turn open
CARBURETOR SETTING - High Speed Needle -----	3/4 to 1 1/4 turn open
IDLE R. P. M. NO LOAD -----	1800 to 2000

TORQUE DATA

	Inch lbs.
1. Bearing plate to block screw	80 to 90
2. Blower housing to bearing plate screws	80 to 90
3. Carburetor to induction bracket screws	30 to 40
4. Crankshaft nut - Clutch end.	270 to 300
5. Conn. rod cap to rod screw (Forged Aluminum)	80 to 90
5A Conn. rod cap to rod screw (Die Cast)	55 to 65
6. Flywheel to crank nut	250 to 300
7. Induction bracket to block screw	55 to 65
8. Main strut to block screw	250 to 280
9. Muffler to block nut	50 to 60
10. Spark plug Cylinder	230 to 270
11. Startor to bearing plate screw	45 to 65
12. Stud - Guide Bar nut	250 to 270