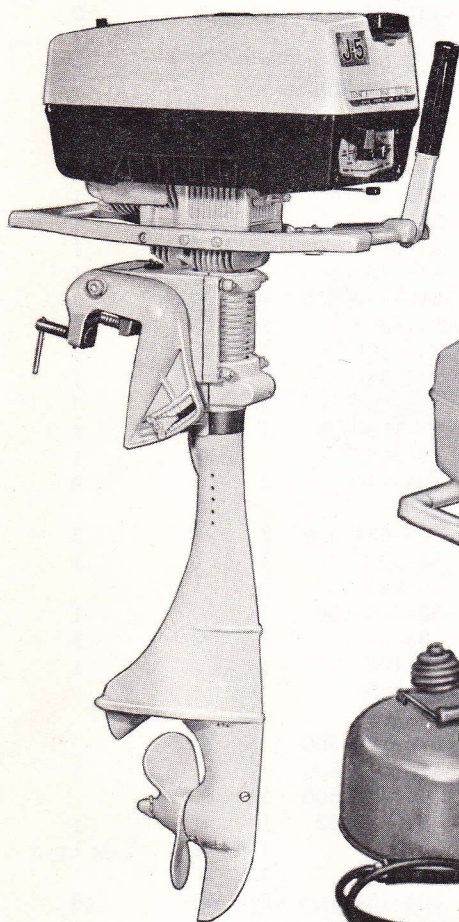
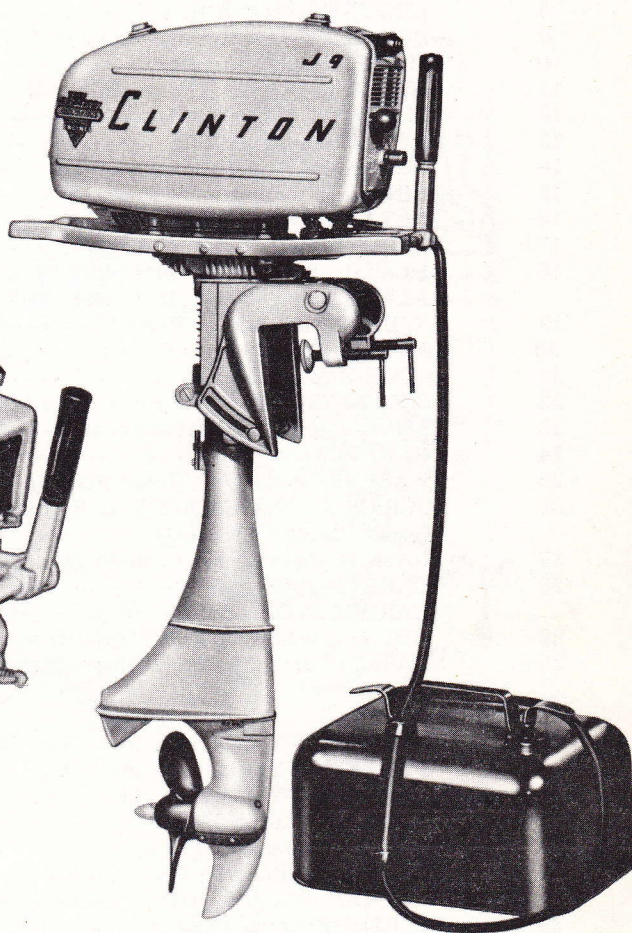
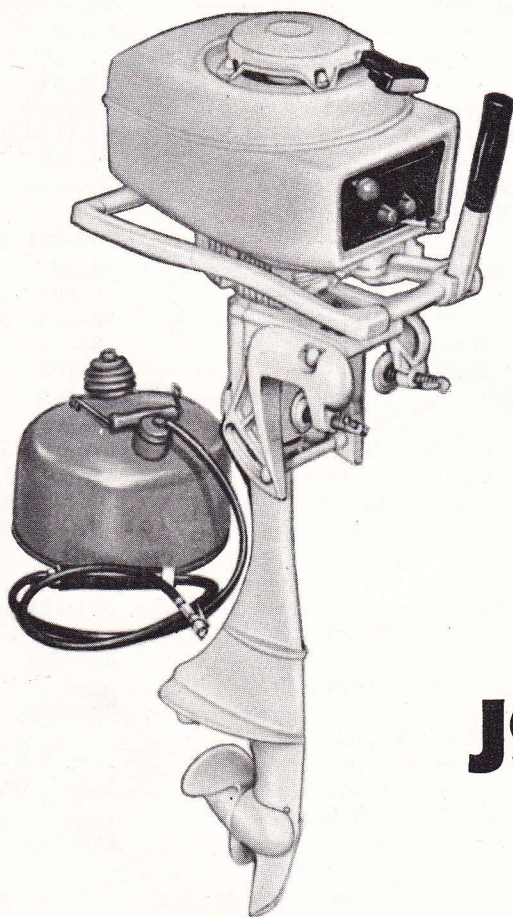


Clinton OUTBOARD ENGINE



J5

J6



J9-1000

1. The J5 may be found with various overshrouds, but in other respects is the same. (Illustrated with overshroud).
2. The J6 is identified by the number 582·60900 stamped on the name plate.

Manufactured by CLINTON ENGINES CORPORATION, Maquoketa, Iowa.
Printed in U. S. A.



SECTION X, OUTBOARDS
J-SERIES
ISSUED JUNE, 1966

CLINTON

Illustrated Parts List
J-SERIES OUTBOARDS

Contents

J5-1000 Pages 2-6

***J6-1000** Pages 7-12

J9-1000 Pages 13-18

* J6-1000 Series will be identified by numbers 582-60900 (J6-1000), 582-60940 (J6-1100), 582-60910 (J6-1101), 582-60941 (J6-1102) and 582-60920 (J6-1103), on identification plate located on swivel bracket.

Manufactured by

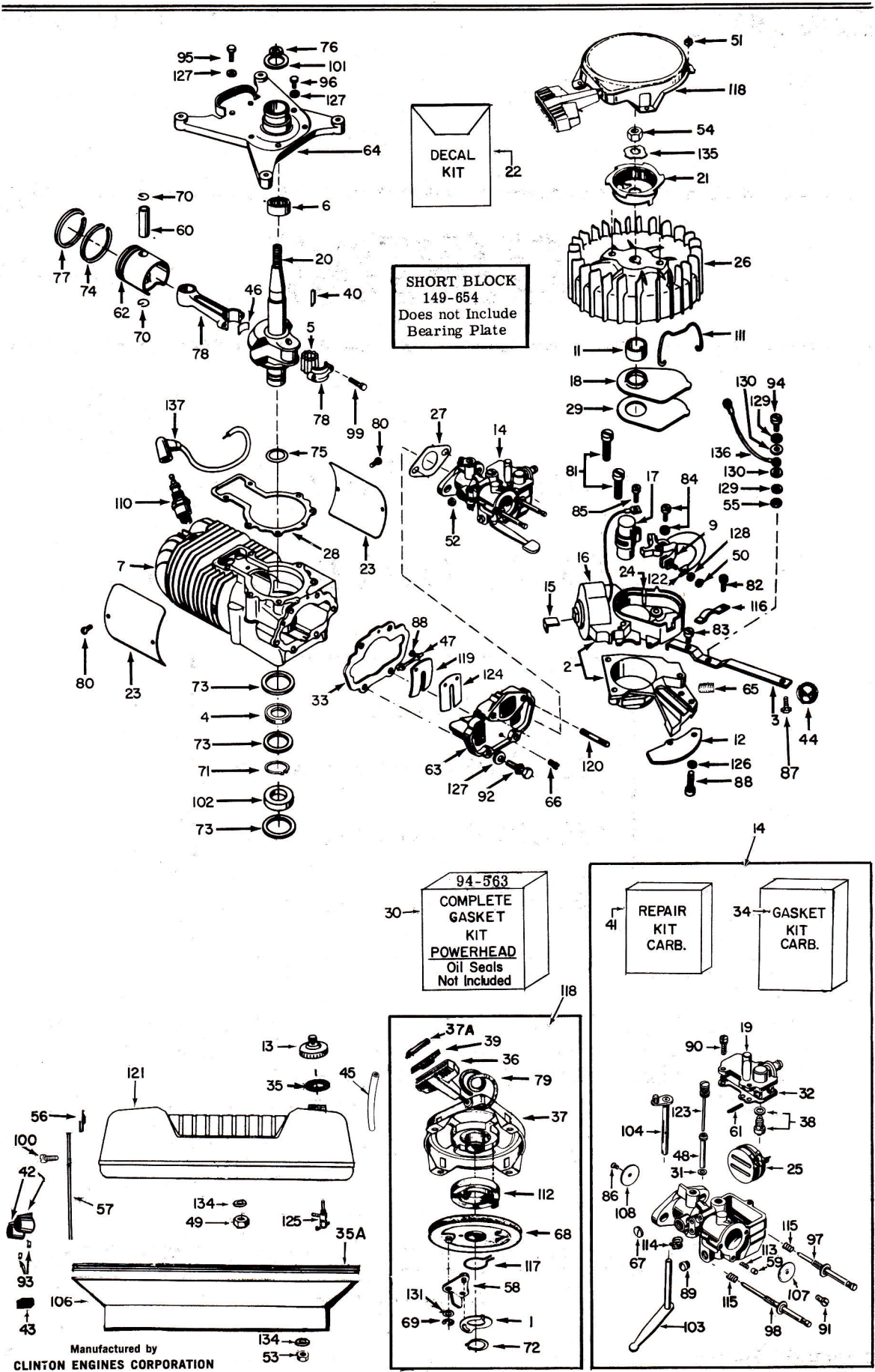
CLINTON ENGINES CORPORATION

MAQUOKETA, IOWA

BASIC PARTS LIST

J5-1000

POWERHEAD

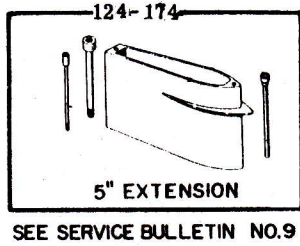


Manufactured by
CLINTON ENGINES CORPORATION
 Maquoketa, Iowa

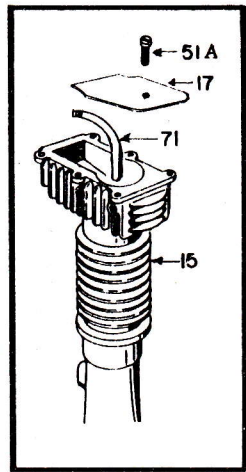
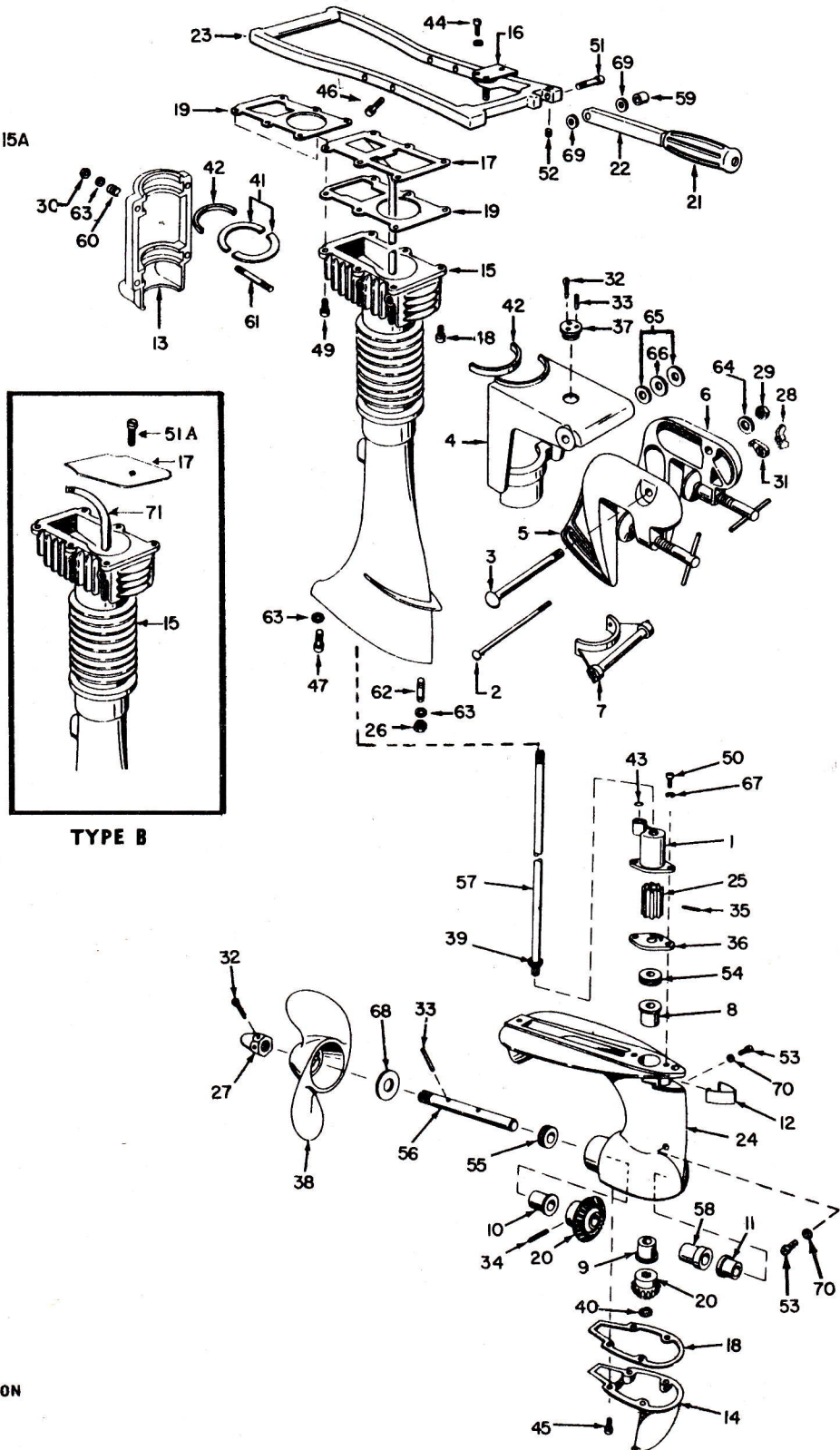
POWER HEAD PARTS LIST

Ref. No.	Part Number	Description	Qty.	Ref. No.	Part Number	Description	Qty.
1.	157-410	ACTUATOR-Recoil	1	70.	232-40	RETAINER-Wrist Pin	2
2.	1-83-500	ADAPTOR & MAG-Incl. No. 9 16, & 17	1	71.	232-73	RETAINER-Crankshaft	1
3.	157-408	ARM-Ignition Control	1	72.	232-147	RETAINER-Ring (Recoil Shaft)	1
4.	20-4	BEARING-Ball	1	73.	232-148	RETAINER-Bearing & Seal	3
5.	20-197-500	BEARING ASS'Y-Connecting Rod	1	74.	148-31	RING-Lock (Piston Ring)	3
6.	20-198-990	BEARING-Needle	1	75.	232-137	RING-"O" Ring (Crankshaft)	1
7.	22-704	BLOCK ASS'Y-Cylinder	1	76.	232-141	RING-Retain. r (Brng. Plt. O. Seal)	1
8.				77.	233-45	RING-Piston Compression (Std)	3
9.	135-7-500	BREAKER POINT ASS'Y	1		235-45	RING-Piston Compression (.010)	
10.					237-45	RING-Piston Compression (.020)	
11.	157-29	CAM-Breaker Point	1		233-141-500	RING-Piston (Chrome-Std.)	1
12.	157-339	CAM-Throttle	1		237-141-500	RING-Piston (Chrome-.020 O/S)	1
13.	45-401-500	CAP-Fuel	1	78.	245-118	ROD ASS'Y-Incl. No. 5, 46, 99	1
14.	39-715-500	CARBURETOR ASSEMBLY	1	79.	246-7	ROPE-Starter 58" Long	1
15.	81-20	CLIP-Coil Core	1	80.	258-16	SCREW-Air Deflectors to Block	4
16.	135-13-990	COIL ASS'Y-Ignition	1	81.	258-108-500	SCREW & L'W ASS'Y-Stator	2
17.	135-29-990	CONDENSER ASS'Y-Ignition	1	82.	258-119	SCREW-Clip Spring	1
18.	45-15	COVER-Breaker Box	1	83.	258-123	SCREW-Mag. Ass'y to Stator	1
19.	45-316	COVER-Float Bowl-Carb.	1	84.	258-297-500	SCREW & L'W ASS'Y-Points	1
20.	46-782	CRANKSHAFT	1	85.	258-299	SCREW-Condenser to Stator Plt.	1
21.	265-197	CUP-Starter	1	86.	258-336-500	SCREW & L'W ASS'T-Thr. Vlv.	1
22.				87.	258-936-500	SCREW-Control Knob	1
23.	259-411	DEFLECTOR-Air	2	88.	258-616	SCREW-Cam Friction Plt. to Adaptor & Reed Vlv. to Reed Plt.	4
24.	94-189	FELT-Cam Wiper	1	89.	258-783	SCREW-Headless Set (Carb.)	1
25.	82-19	FLOAT & LEVER ASS'Y	1	90.	258-784-500	SCREW & L'W ASS'Y-Carb.	3
26.	83-95-500	FLYWHEEL ASS'Y	1	91.	258-787-500	SCREW & L'W Choke Shutter	1
27.	94-30	GASKET-Carb. to Reed Plate	1	92.	258-834-500	SCREW-Reed Plate	2
28.	94-105	GASKET-Brng. Plt. (.030 Std.)	1	93.	258-839	SCREW-Set	2
	93-105	GASKET-Brng. Plt. (.025) U/S		94.	258-848	SCREW-Shorting Wire	1
	95-105	GASKET-Brng. Plt. (.035) O/S		95.	258-864	SCREW-Bearing Plate	2
29.	94-241	GASKET-Breaker Box Cover	1	96.	258-865	SCREW-Bearing Plate	4
30.	94-563	GASKET-Kit Complete	1	97.	258-868	SCREW-Main Adjustment	1
31.	94-403	GASKET-Main Nozzle	1	98.	258-869	SCREW-Idle Adjustment	1
32.	94-404	GASKET-Float Bowl Cover	1	99.	258-901	SCREW-Cap to Rod (Connecting)	2
33.	94-430	GASKET-Reed Plate to Block	1	100.	258-926	SCREW-Panel Control to Shroud	4
34.	94-562	GASKET & PACKING SET-Carb.	1	101.	94-257	SEAL ASS'Y-Oil (Upper Brng. Plt.)	1
35.	94-275	GASKET-Fuel Cap	1	102.	94-388-500	SEAL ASS'Y-Oil (Lower Block)	1
35 A	94-544	GASKET-Shroud	1	103.	6-300-500	SHAFT & LEVER ASS'Y-Choke	1
36.	121-6	HANDLE STARTER	1	104.	6-301-500	SHAFT & LEVER ASS'Y-Throttle	1
37.	124-166-500	HOUSING ASS'Y	1	105.			
37 A	136-128	INSERT-Recoil Handle	1	106.	259-684-500	SHROUD-Lower Half	1
38.	94-139-500	INLET NEEDLE & SEAT ASS'Y	1	107.	39-693	SHUTTER-Choke	1
39.	136-2	INSERT-Recoil Handle	1	108.	39-719	SHUTTER-Throttle	1
40.	148-4	KEY-Flywheel	1	109.			
41.	39-907	KIT-Repair Carburetor	1	110.	267-87-500	SPARK PLG. & GASK. ASS'Y-CJ8	1
42.	121-180	KNOB-Carburetor Adjusting	2	111.	263-10	SPRING-Breaker Box Cover	1
43.	121-181	KNOB-Choke	1	112.	263-79	SPRING-Recoil	1
44.	900-395	KNOB-Control Arm	1	113.	263-218	SPRING-Choke Friction Pin	1
45.	158-25	LINE-Fuel (Tank to Carb.)	1	114.	263-297	SPRING-Throttle Shaft, Return	1
46.	136-77	LINER-Connecting Rod	2	115.	263-298	SPRING-Main Adjusting Screw	1
47.	81-113	LOCK-Tab (Reed Valve)	1	116.	263-318	SPRING-Clip (Control Arm)	1
48.	182-49	NOZZLE-Main (Carb.)	1	117.	263-361	SPRING-Actuator (Recoil)	1
49.	183-1-500	NUT & L'W ASS'Y-Tank & Shroud Ass'y to Bearing Plate	4	118.	265-219-500	STARTER ASS'Y-Recoil	1
50.	183-21	NUT-Hex. Terminal	1	119.	215-117	STOP-Reed Valve	1
51.	183-25-500	NUT & L'W ASS'Y-Recoil	4	120.	24-86	STUD-Carburetor to Reed Plate	2
52.	183-29-500	NUT & L'W-Carb. to Reed Plt.	2	121.	277-453-500	TANK & MTG. PLT. ASS'Y-Fuel	1
53.	183-141	NUT-Shroud Brkt. to Tk. Ass'y	4	122.	307-230	TERMINAL-Jamtlite	1
54.	183-158	NUT-Hex. Flywheel	1	123.	158-345-500	TUBE ASS'Y-Idle	1
55.	183-228	NUT-Grip. Hex. Shorting Wire	1	124.	293-50	VALVE-Reed	1
56.	183-264	NUT-Speed Type 4 Panel Cont.	4	125.	293-181	VALVE-Fuel Shut-Off	1
57.	199-6	PANEL-Control	1	126.	304-1	WASHER-Cam to Base Thr. Arm	2
58.	157-409-500	PAWL & PIN ASS'Y	1	127.	304-134	WASHER-Flat (Reed Plt. to Blk.) (Bearing Plate to Block)	10
59.	39-694	PIN-Choke Friction	1	128.	304-290	WASHER-Terminal Points	1
60.	203-61	PIN-Wrist	1	129.	304-527	WASHER-Flat (Shorting Wire)	2
61.	203-172	PIN-Float Lever	1	130.	304-534	WASHER-Fiber (Shorting Wire)	2
62.	204-54	PISTON-Standard	1	131.	304-605	WASHER	1
	206-54	PISTON-.010 Oversize		132.			
	207-54	PISTON-.020 Oversize		133.			
63.	215-494-500	PLATE-Reed Incl. No. 119, 124	1	134.	304-632	WASHER-Flat, Shroud to Tank	8
64.	215-495-500	PLATE-Brng. Incl. No. 6	1	135.	304-536	WASHER-Starter Cup	1
65.	135-243-500	PLUG ASS'Y-Friction	1	136.	307-278-500	WIRE-Shorting	1
66.	216-26	PLUG-Reed Plate	1	137.	307-301-500	WIRE-Lead (Hi-Tension)	1
67.	216-31	PLUG-Expansion Carb.	1				
68.	219-165-500	PULLEY ASS'Y-Recoil	1				
69.	232-35	PULLEY ASS'Y-Recoil Pawl	1				

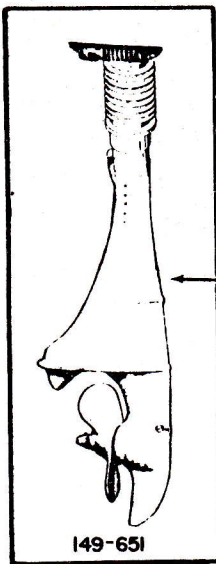
BASIC PARTS LIST J5-1000 LOWER COLUMN



SEE SERVICE BULLETIN NO.9



TYPE B



COMPLETE LOWER COLUMN

Manufactured by
CLINTON ENGINES CORPORATION
Maquoketa, Iowa

LOWER COLUMN PARTS LIST

Ref. No.	Part Number	Description	Qty.	Ref. No.	Part Number	Description	Qty.
1	220-142	BODY-Water Pump	1	35	203-197	PIN-Roll (Water Pump)	1
2	24-78	BOLT-Carriage Mtg. Brkt.	1	36	900-288	PLATE-Water Pump	1
3	24-84	BOLT-Carriage Mtg. Brkt.	1	37	216-94	PLUG-Spare Shear Pin	1
4	26-508	BRACKET-Swivel	1	38	217-1-500	PROPELLER-Standard	1
5	26-519-500	BRACKET ASS'Y-Stern (Starbrd.)	1		217-4	PROPELLER-Bronze (Optional)	1
6	26-520-500	BRACKET ASS'Y-Stern (Port)	1	39	232-133	RETAINER-Ring	1
7	26-521-500	BRACKET ASS'Y-Thrust	1	40	232-134	RETAINER-Pinion Gear	1
8	28-53	BUSHING-Drive Shaft (Upper)	1	41	44-82	RING-Friction	4
9	28-54	BUSHING-Drive Shaft (Lower)	1	42	232-121	RING-Bearing	4
10	28-55	BUSHING-Propeller Shaft (Front)	1	43	232-135	RING-"O" Ring	1
11	20-167	BUSHING-Propeller Shaft (Rear)	1	44	258-42	SCREW-#10-24 (Cover Fl. Pump)	3
12	45-324	CAP-Nut (Cavity)	1	45	258-825	SCREW-Gear Hsg. Cap	4
13	900-241	CAP-Swivel Bracket	1	46	258-828	SCREW-Handle to Column	6
14	900-287	CAP-Gear Housing	1	47	258-832	SCREW-Housing to Column	1
15	124-127	COLUMN ASS'Y-Type A	1	48	258-833	SCREW-Column to Power Head	4
	124-187	COLUMN ASS'Y-Type B Incl. Tube & Deflector		49	258-834	SCREW-Column to Power Head	4
15A	124-174	COLUMN-Extension Kit 5"		50	258-857	SCREW-Water Pump Body	2
15B	149-651	COLUMN-Kit (Complete)		51	258-859	SCREW-Steering Handle	1
16	45-400	COVER-Pump Well	1	51A	258-849	SCREW-Deflect. to Clmn.	
17	259-547-500	DEFLECTOR-Tube Ass'y (Type A)	1	52	258-860	SCREW-Set (Steering Handle)	1
	259-789-500	DEFLECTOR (Type B)		53	258-863	SCREW-Filler & Drain	2
18	94-386	GASKET-Gear Housing Cap	1	54	94-400	SEAL-Oil (Drive Shaft)	1
19	94-429	GASKET-Exhaust Deflector	2	55	94-401	SEAL-Oil (Propeller Shaft)	1
20	106-425	GEAR PINION & GEAR BEVEL (Sold as Matched Set Only)	1	56	6-299	SHAFT-Propeller	1
21	121-184	GRIP-Handle	1	57	6-302	SHAFT-Drive	1
22	121-192	HANDLE-Steering	1	58	304-517	SPACER-Propeller Shaft	1
23	121-191	HANDLE-Carrying	1	59	304-543	SPACER-Handle Pivot	1
24	124-136-500	HOUSING ASS'Y-Gear (Incl. Ref. Nos. 8, 9, 10, 11, 54, & 55)	1	60	263-293	SPRING-Compression Cap Brkt.	4
25	220-136-500	IMPELLER ASS'Y-Water Pump	1	61	24-76	STUD-Bracket Swivel	4
26	183-33	NUT-Lock (Gear Hsg. to Clmn.)	1	62	24-83	STUD-Column	1
27	183-209	NUT-Propeller	1	63	304-134	WASHER-Hsg. to Column	6
28	183-210	NUT-Wing Thrust Bracket	1	64	304-337	WASHER-Mounting Bracket	1
29	183-211	NUT-Lock Bracket Ass'y	1	65	304-521	WASHER-Swivel Bracket	4
30	183-226	NUT-Swivel Bracket Cap	4	66	304-522	WASHER-Friction Brkt. Ass'y	2
31	900-267	PAWL-Guide (Thrust Brkt.)	1	67	304-532	WASHER-Lock (Pump Housing)	2
32	203-165	PIN-Cotter (1-Spare)	2	68	304-541	WASHER-Propeller Shaft	1
33	203-166	PIN-Shear (2-Spare)	3	69	304-542	WASHER-Handle (Pivot)	2
34	203-167	PIN-Roll (Bevel Gear)	1	70	304-545	WASHER-Filler Screw	2
				71	158-453	WATER TUBE-Type B	1

SPECIFICATIONS

BORE AND STROKE ----- 2 1/8 x 1 5/8
 DISPLACEMENT (Cu. In.) ----- 5.76
 IGNITION ----- High Tension Magneto
 MAGNETO POINT SETTING ----- .020
 SPARK PLUG ----- CJ8 Champion
 SPARK PLUG SETTING ----- .025
 CARBURETOR ----- Float (Tillotson)
 CRANKSHAFT ----- Forged
 BEARINGS (Engine) ----- Needle and Ball
 BEARINGS (Gear Housing) ----- Oilite Bronze
 STARTER ----- Recoil
 FUEL SYSTEM ----- Gravity Feed

FUEL TANK CAPACITY ----- 5 Pints
 GEAR RATIO ----- 14 - 21
 PROPELLER TYPE ----- Shear Pin - Semi Weedless
 PROPELLER DIA. & PITCH ----- 7 - 4 1/2
 STEERING ----- 180° Pivot-Reverse
 LUBRICANT (Gear Housing) ----- SAE 90
 FUEL MIXTURE ----- 1/4 Pint Motor Oil to one
 Gallon of Regular Gasoline
 IDLE SPEED ----- 800 R. P. M.
 RECOMMENDED FULL THROTTLE
 OPERATING RANGE ----- 4000 - 5000 R. P. M.
 PEAK HORSEPOWER ----- At 6800 R. P. M. Sea Level
 Barometer at 60° F.

MODEL VARIATIONS

J5-1000



Opposite each outboard model notes have been assigned to cover part numbers required in addition to or in place of standard parts.

SEE NAME PLATE ON SWIVEL BRACKET FOR OUTBOARD MODEL

MODELS	CRANKSHAFT	NOTES	SHORT BLOCK	MODELS	CRANKSHAFT	NOTES	SHORT BLOCK
J5-1000	46-782	Std. Model	149-654	J5-1104	46-782	2 & 3	149-654
J5-1100	46-782	1	149-654	J5-1105	46-782	2 & 3	149-654
J5-1101	46-782	1	149-654	J5-1106	46-782	4, 5 & 6	149-654
J5-1102	46-782	1	149-654	J5-1107	46-782	4, 5 & 6	149-654
J5-1103	46-782	1	149-654	J5-1150	46-782	2 & 3	149-654

J5-1000 NOTES

- Note 1 Use 259-706 Shroud and 20-233 Bushing Recoil Rope Guide.
- Note 2 Use 157-438 Arm Control and 136-126 Sleeve Control Arm.
- Note 3 Use 277-480-500 Tank Ass'y, (2) 258-602 Screw (Bracket Support to Tank), 26-687 Bracket Support, 20-233 Bushing Snap, 259-749 Shroud (Lower Half), (8) 304-632 Washer Flat, (4) 183-264 Nut - Speed (Tinnerman), 259-748 Shroud (Upper Half), 304-628 Washer - Neoprene, 304-627 Washer - Felt, 121-218 Knob (Shroud Retaining) and 265-259-500 Recoil Starter (Use Standard Recoil parts to service).
- Note 4 Use 215-460-500 Plate - Ass'y Reed, 69-29 Elbow - Hose Connector, 121-191 Handle-Carrying, 220-134-500 Pump - Cover Ass'y, 293-146-500 Ball Check Ass'y, 69-191 Elbow Pump, 69-281 Elbow - Fuel Line, 263-317 Spring - Diaphragm, 304-537 Washer Diaphragm Spring, 220-132 Diaphragm - Fuel Pump, (3) 304-377 Washer Flat, (3) 258-29 Screw, (2) 158-25 (Line Fuel and Impulse).
- Note 5 Use 277-483-500 Housing - Flywheel, 259-760 Shroud and 20-233 Bushing-Snap (Rope Guide).
- Note 6 Use 277-234-500 Tank Ass'y (Remote), 45-191 Cap - Fuel, 69-139-500 Elbow - Pickup (Tank), 69-258-500 Connector and Catch Ass'y (Fuel Line End), (2) 158-375 Line Fuel, 220-126-500 Primer Pump Ass'y, and 259-760 Shroud.

CLINTON ENGINES CORPORATION

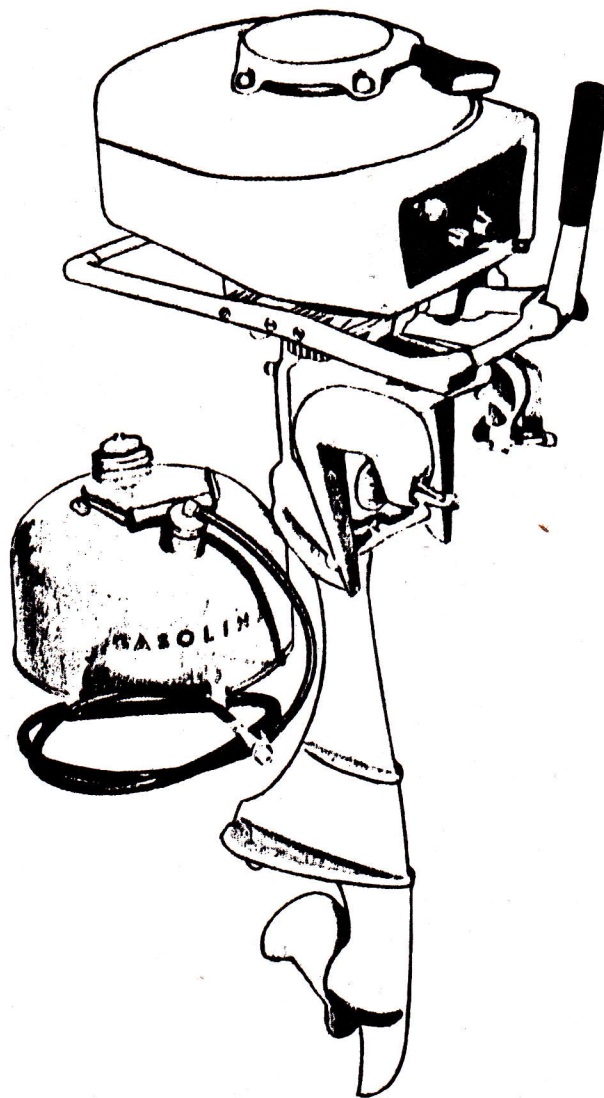
MAQUOKETA, IOWA

J6-1000

BASIC PARTS LIST

&

MODEL VARIATIONS



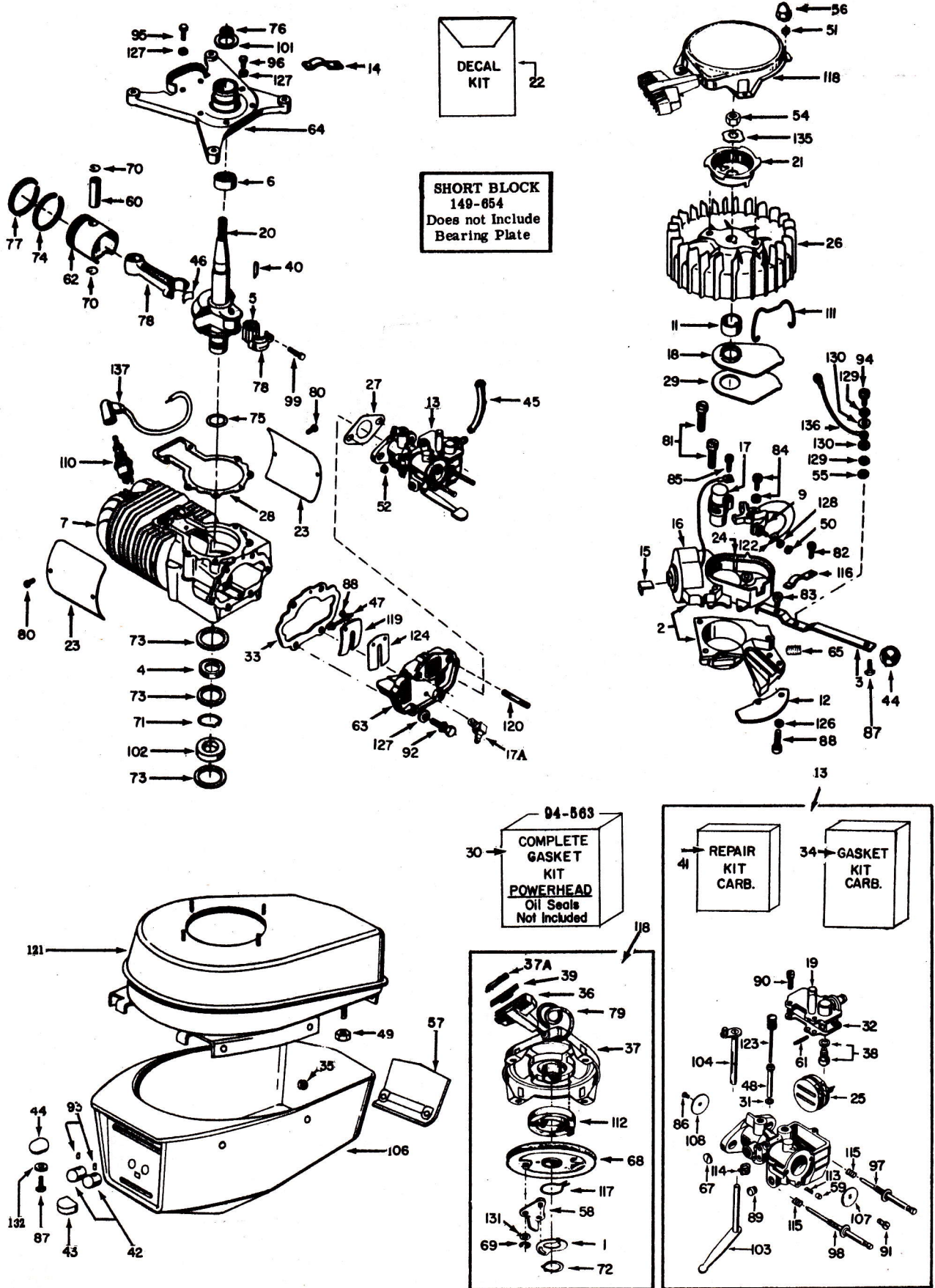
J6-1000 Series will be identified by numbers 582-60900 (J6-1000), 582-60940 (J6-1100), 582-60910 (J6-1101), 582-60941 (J6-1102) and 582-60920 (J6-1103), on identification plate located on swivel bracket.

BASIC PARTS LIST

J6-1000

SEARS NO. 582-60900

POWERHEAD



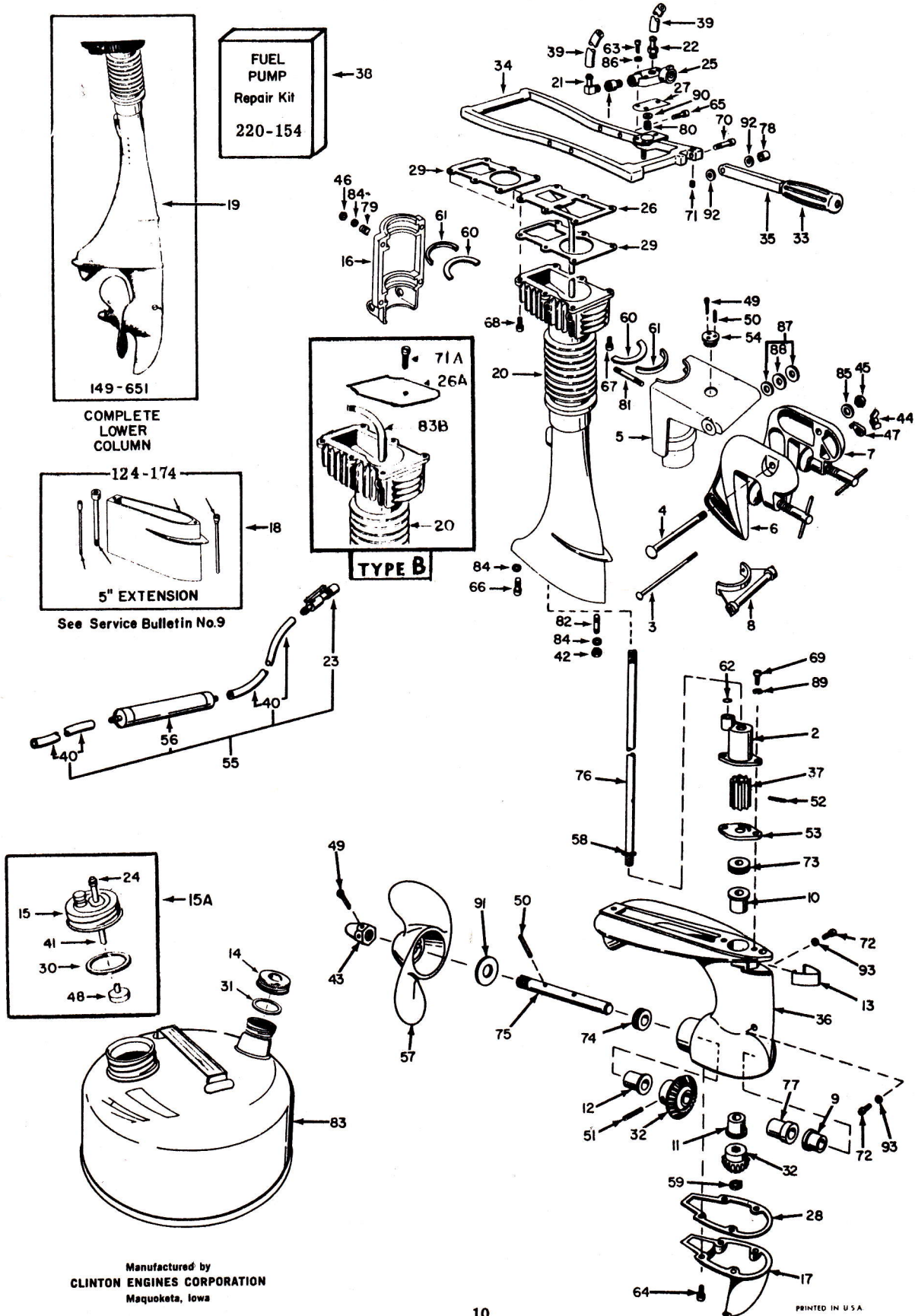
**POWERHEAD
PARTS LIST**

Ref. No.	Part Number	Description	Qty.	Ref. No.	Part Number	Description	Qty.
1.	157-410	ACTUATOR-Recoil	1	69.	232-35	RETAINER-Ring Recoil Pawl	1
2.	1-83-500	ADAPTOR & MAG. -Incl. No. 9 16, and 17	1	70.	232-40	RETAINER-Wrist Pin	2
				71.	232-73	RETAINER-Crankshaft	1
3.	157-423	ARM-Ignition Control	1	72.	232-147	RETAINER-Ring (Recoil Shaft)	1
4.	20-4	BEARING-Ball	1	73.	232-148	RETAINER-Bearing & Seal	3
5.	20-197-500	BEARING ASS'Y-Connecting Rod	1	74.	148-31	RING-Lock (Piston Ring)	3
6.	20-198-990	BEARING-Needle	1	75.	232-137	RING-"O" Ring (Crankshaft)	1
7.	22-704	BLOCK ASS'Y-Cylinder	1	76.	232-141	RING-Retainer (Brng. Plt. O. Seal)	1
9.	135-7-500	BREAKER POINT ASS'Y	1	77.	233-45	RING-Piston Compression (Std.)	3
11.	157-29	CAM-Breaker Point	1		235-45	RING-Piston Compression (.010)	
12.	157-339	CAM-Throttle	1		237-45	RING-Piston Compression (.020)	
13.	39-944-500	CARBURETOR ASS'Y	1		233-141-500	RING-Piston (Chrome-Std.)	1
14.	81-173	CLAMP-Hi-Tension Lead	1		237-141-500	RING-Piston (Chrome-.020 O.S.)	1
15.	81-20	CLIP-Coil Core	1	78.	245-118	ROD ASS'Y-Incl. No. 5, 46, 99	1
16.	135-13-990	COIL ASS'Y-Ignition	1	79.	246-7	ROPE-Starter 58" Long	1
17.	135-29-990	CONDENSER ASS'Y-Ignition	1	80.	258-936-500	SCREW-Air Deflectors to Block	4
17A.	69-29	CONNECTOR-Elbow	1	81.	258-108-500	SCREW & L'W ASS'Y-Stator	2
18.	45-15	COVER-Breaker Box	1	82.	258-119	SCREW-Clip Spring	1
19.	45-316	COVER-Float Bowl-Carb.	1	83.	258-123	SCREW-Mag. Ass'y to Stator	1
20.	46-782	CRANKSHAFT	1	84.	258-297-500	SCREW & L'W ASS'Y-Points	1
21.	265-197	CUP-Starter	1	85.	258-299	SCREW-Condenser to Stator Plt.	1
23.	259-411	DEFLECTOR-Air	2	86.	258-336-500	SCREW & L'W ASS'Y-Thr. Vlv.	1
24.	94-189	FELT-Cam. Wiper	1	87.	258-616	SCREW-Control Knob	1
25.	82-19	FLOAT & LEVER ASS'Y	1	88.	258-616	SCREW-Cam. Friction Plt. to Adaptor & Reed Vlv. to Reed Plt.	4
26.	83-95-500	FLYWHEEL ASS'Y	1				
27.	94-30	GASKET-Carb. to Reed Plate	1	89.	258-783	SCREW-Headless Set (Carb.)	1
28.	94-105	GASKET-Brng. Plt. (.030 Std.)	1	90.	258-784-500	SCREW & L'W ASS'Y-Carb.	3
	93-105	GASKET-Brng. Plt. (.025) U.S.		91.	258-787-500	SCREW & L'W-Choke Shutter	1
	95-105	GASKET-Brng. Plt. (.035) O.S.		92.	258-834-500	SCREW-Reed Plate	2
29.	94-241	GASKET-Breaker Box Cover	1	93.	258-839	SCREW-Set	2
30.	94-563	GASKET-Kit Complete	1	94.	258-848	SCREW-Shorting Wire	1
31.	94-403	GASKET-Main Nozzle	1	95.	258-864	SCREW-Bearing Plate	2
32.	94-404	GASKET-Float Bowl Cover	1	96.	258-865	SCREW-Bearing Plate	4
33.	94-430	GASKET-Reed Plt. to Block	1	97.	258-976	SCREW-Main Adjustment	1
34.	94-562	GASKET & PACKING SET-Carb.	1	98.	258-977	SCREW-Idle Adjustment	1
35.	70-45	GROMMET-Panel	2	99.	258-901	SCREW-Cap to Rod (Connecting)	2
36.	121-6	HANDLE STARTER	1	100.	258-979	SCREW-Shroud to Tank	8
37.	124-166-500	HOUSING ASS'Y-Recoil	1	101.	94-257	SEAL ASS'Y-Oil (Upper Brng. Plt.)	1
37A.	136-128	INSERT-Recoil Handle	1	102.	94-388-500	SEAL ASS'Y-Oil (Lower Block)	1
38.	94-139-500	INLET NEEDLE & SEAT ASS'Y	1	103.	6-469-500	SHAFT & LEVER ASS'Y-Choke	1
39.	136-2	INSERT-Recoil Handle	1	104.	6-301-500	SHAFT & LEVER ASS'Y-Throttle	1
40.	148-4	KEY-Flywheel	1	106.	259-710-500	SHROUD- (Lower Half)	1
41.	39-948	KIT-Repair Carburetor	1	107.	39-693	SHUTTER-Choke	1
42.	121-180	KNOB-Carburetor Adjusting	2	108.	39-719	SHUTTER-Throttle	1
43.	121-181	KNOB-Choke	1	110.	267-87-500	SPARK PLG. & GASK. ASS'Y-CJ8	1
44.	121-178	KNOB-Control Arm	1	111.	263-10	SPRING-Breaker Box Cover	1
45.	158-25	LINE-Fuel-Pump to Carb.	1	112.	263-79	SPRING-Recoil	1
46.	136-77	LINER-Connecting Rod	2	113.	263-218	SPRING-Choke Friction Pin	1
47.	81-113	LOCK-Tab (Reed Valve)	1	114.	263-297	SPRING-Throttle Shaft, Return	1
48.	182-49	NOZZLE-Main (Carb.)	1	115.	263-298	SPRING-Main Adjusting Screw	2
49.	183-1-500	NUT & L'W ASS'Y-Tank & Shroud Ass'y to Bearing Plate	4	116.	263-318	SPRING-Clip (Control Arm)	1
				117.	263-361	SPRING-Actuator (Recoil)	1
50.	183-21	NUT-Hex. Terminal	1	118.	265-219-500	STARTER ASS'Y-Recoil	1
51.	183-25-500	NUT & L'W ASS'Y-Recoil	4	119.	215-117	STOP-Reed Valve	1
52.	183-29-500	NUT & L'W-Carb. to Reed Plt.	2	120.	24-86	STUD-Carburetor to Reed Plate	2
54.	183-158	NUT-Hex. Flywheel	1	121.	277-473-500	TANK & MTG. PLT. ASS'Y-Fuel	1
55.	183-228	NUT-Grip Hex. Shorting Wire	1	122.	307-230	TERMINAL-Jamtite	1
56.	183-242	NUT-Acorn (Recoil)	4	123.	158-345-500	TUBE ASS'Y-Idle	1
57.	199-7-500	PANEL ASS'Y-Access	1	124.	293-50	VALVE-Reed	1
58.	157-409-500	PAWL & PIN ASS'Y	1	126.	304-1	WASHER-Throttle Cam.	2
59.	39-694	PIN-Choke Friction	1	127.	304-134	WASHER-Flat (Reed Plt. to Blk.) (Bearing Plate to Block)	10
60.	203-61	PIN-Wrist	1				
61.	203-172	PIN-Float Lever	1	128.	304-290	WASHER-Terminal Points	1
62.	204-54	PISTON-Standard	1	129.	304-527	WASHER-Flat (Shorting Wire)	2
	206-54	PISTON-.010 O.S.		130.	304-534	WASHER-Fiber (Shorting Wire)	2
	207-54	PISTON-.020 O.S.		131.	304-605	WASHER	1
63.	215-460-500	PLATE-Reed Incl. No. 119, 124	1	132.	304-1	WASHER-Cont. Knob	1
64.	215-508-500	PLATE-Brng. Incl. No. 6, 76, 101	1	135.	304-536	WASHER-Starter Cup	1
65.	135-243-500	PLUG ASS'Y-Friction	1	136.	307-278-500	WIRE-Shorting	1
67.	216-31	PLUG-Expansion Carb.	1	137.	307-301-500	WIRE-Lead (Hi-Tension)	1
68.	219-165-500	PULLEY ASS'Y-Recoil	1				

BASIC PARTS LIST

J6-1000

SEARS NO. 582-60900
LOWER COLUMN



Manufactured by
CLINTON ENGINES CORPORATION
Maquoketa, Iowa

**LOWER COLUMN
PARTS LIST**

Ref. No.	Part Number	Description	Qty.	Ref. No.	Part Number	Description	Qty.
1.	293-146-500	BALL CHECK ASS'Y	1	47.	900-267	PAWL-Guide (Thrust Brkt.)	1
2.	220-142	BODY-Water Pump	1	48.	25-38	PICKUP-Fuel	1
3.	24-78	BOLT-Carriage Mtg. Bracket	1	49.	203-165	PIN-Cotter	2
4.	24-84	BOLT-Carriage Mtg. Bracket	1	50.	203-166	PIN-Shear 1-3/16 x 5/32 Dia.	3
5.	26-508	BRACKET-Swivel	1			(2-Spare)	
6.	26-519-500	BRACKET ASS'Y-Stern (Starbrd.)	1	51.	203-167	PIN-Roll (Bevel Gear	1
7.	26-520-500	BRACKET ASS'Y-Stern(Port)	1	52.	203-197	PIN ROLL-Water Pump	1
8.	26-521-500	BRACKET ASS'Y-Thrust	1	53.	900-288	PLATE-Water Pump	1
9.	20-167	BUSHING-Propeller Rear	1	54.	216-94	PLUG-Spare Shear Pin	1
10.	28-53	BUSHING-Drive Shaft (Upper)	1	55.	220-137-500	PRIMER PUMP & LINE ASS'Y	1
11.	28-54	BUSHING-Drive Shaft (Lower)	1	56.	220-126-500	PRIMER PUMP ASS'Y	1
12.	28-55	BUSHING-Propeller Shaft (Front)	1	57.	217-1-500	PROPELLER-(Standard)	1
13.	45-324	CAP-Nut (Cavity)	1		217-4	PROPELLER-Bronze (Optional)	
14.	45-456	CAP-Fuel (Sm.) 2 1/2 Gal. Tk.	1	58.	232-133	RETAINER-Ring Drive Shaft	1
15.	45-455	CAP-Fuel Pickup 2 1/2 Gal. Tk.	1	59.	232-134	RETAINER-Pinion Gear	1
15A.	45-465	CAP ASS'Y-Fuel 2 1/2 Gal. Tk.	1	60.	44-82	RING-Friction	4
16.	900-241	CAP-Swivel Bracket	1	61.	232-121	RING-Bearing	4
17.	900-287	CAP-Gear Housing	1	62.	232-135	RING-"O" Ring	1
18.	124-174	COLUMN-Extension Kit 5"	1	63.	258-29	SCREW-Pump Cover	3
19.	149-651	COLUMN-Kit Complete	1	64.	258-825	SCREW-Gear Housing Cap	4
20.	124-187	COLUMN & MUFFLER ASS'Y	1	65.	258-828	SCREW-Handle to Column	6
21.	69-191	CONNECTOR-Elbow	1	66.	258-832	SCREW-Housing to Column	1
22.	69-281	CONNECTOR	1	67.	258-833	SCREW-Column to Power Head	4
23.	69-258-500	CONNECTOR & CATCH ASS'Y	1	68.	258-834	SCREW-Column to Power Head	2
24.	45-458-500	COVER ASS'Y-Fuel Tank Pickup	1	69.	258-857	SCREW-Water Pump Body	2
25.	220-134-500	COVER ASS'Y-Fuel Pump	1	70.	258-859	SCREW-Steering Handle	1
26.	259-547-500	DEFLECTOR & TUBE-Type (A)	1	71.	258-860	SCREW-Set(Steering Handle)	1
26A.	259-789-500	DEFLECTOR ASS'Y-Type (B)	1	71A.	258-849	SCREW-Deflector Type (B)	1
27.	220-132	DIAPHRAGM-Fuel Pump	1	72.	258-863	SCREW-Filler & Drain	2
28.	94-386	GASKET-Gear Housing Cap	1	73.	94-400	SEAL-Oil (Drive Shaft)	1
29.	94-429	GASKET-Exhaust Deflector	2	74.	94-401	SEAL-Oil (Propeller Shaft)	1
30.	94-643	GASKET-Fuel Cap 2 1/2 Gal. Tk.	1	75.	6-299	SHAFT-Propeller	1
31.	94-644	GASKET-Fuel Cap 2 1/2 Gal. Tk.	1	76.	6-302	SHAFT-Drive	1
32.	106-425	GEAR PINION & GEAR BEVEL (Sold as Matched Set Only)		77.	304-517	SPACER-Propeller Shaft	1
33.	121-184	GRIP-Handle	1	78.	304-543	SPACER-Handle Pivot	1
34.	121-191	HANDLE-Carrying	1	79.	263-293	SPRING-Compression	4
35.	121-192	HANDLE-Steering	1	80.	263-317	SPRING-Diaphragm	1
36.	124-136-500	HOUSING ASS'Y-Gear (Incl. Ref. Nos. 9, 10, 11, 12, 73, 74)	1	81.	24-76	STUD-Bracket Swivel	4
37.	220-136-500	IMPELLER ASS'Y-Water Pump	1	82.	24-83	STUD-Column	1
38.	220-154	KIT-Fuel Pump (Incl. Spring, Washer & Diaphragm)	1	83.	277-496-500	TANK ASS'Y-Doesn't Incl. 24, 55 2 1/2 Gal. Tk.	1
39.	158-25	LINE-Fuel Cut 7" Long	2	83B.	158-453	TUBE-Water Type (B)	1
40.	158-357	LINE-Fuel Tank	2	84.	304-134	WASHER-Housing to Column	6
41.	158-274	LINE-Pickup	1	85.	304-337	WASHER-Mounting Bracket	1
42.	183-33	NUT-Lock Gear Hsg. to Column	1	86.	304-377	WASHER-Flat (Pump Cover)	3
43.	183-209	NUT-Propeller	1	87.	304-521	WASHER-(Swivel)	4
44.	183-210	NUT-Wing (Thrust Bracket)	1	88.	304-522	WASHER-Friction	2
45.	183-211	NUT-Lock (Bracket Ass'y)	1	89.	304-532	WASHER-Lock (Pump Housing)	2
46.	183-226	NUT-Lock (Swivel Bracket Cap)	4	90.	304-537	WASHER-Diaphragm Spring	1
				91.	304-541	WASHER-Propeller Shaft	1
				92.	304-542	WASHER-Handle Pivot	2
				93.	304-545	WASHER-Filler	2

SPECIFICATIONS

BORE AND STROKE ----- 2 1/8 x 1 5/8
DISPLACEMENT (Cu. In.) ----- 5.76
IGNITION ----- High Tension Magneto
MAGNETO POINT SETTING ----- .020
SPARK PLUG ----- CJ8 Champion
SPARK PLUG SETTING ----- .025
CARBURETOR ----- Float (Tillotson)
CRANKSHAFT ----- Forged
BEARINGS (Engine) ----- Needle and Ball
BEARINGS (Gear Housing) ----- Oilite Bronze
STARTER ----- Recoil
FUEL SYSTEM ----- Fuel Pump

FUEL TANK CAPACITY ----- 2 1/2 Gallons
GEAR RATIO ----- 14 - 21
PROPELLER TYPE ----- Shear Pin - Semi Weedless
PROPELLER DIA. & PITCH ----- 7 - 4 1/2
STEERING ----- 180° Pivot-Reverse
LUBRICANT (Gear Housing) ----- SAE 90
FUEL MIXTURE ----- 1/4 Pint Motor Oil to one
Gallon of Regular Gasoline
IDLE SPEED ----- 800 R. P. M.
RECOMMENDED FULL THROTTLE
OPERATING RANGE ----- 4000 - 5000 R. P. M.
PEAK HORSEPOWER ----- At 6800 R. P. M. Sea Level
Barometer at 60° F.

MODEL VARIATIONS

J6-1000



Opposite each outboard model notes have been assigned to cover part numbers required in addition to or in place of standard parts.

SEE NAME PLATE ON SWIVEL BRACKET FOR OUTBOARD MODEL

MODEL	CRANKSHAFT	SEARS NUMBER	NOTES	SHORT BLOCK	MODEL	CRANKSHAFT	SEARS NUMBER	NOTES	SHORT BLOCK
J6-1000	46-782	582-60900	Std. Model	149-654	J6-1102	46-782	582-60941	1, 2, 3	149-654
J6-1100	46-782	582-60940	1, 2, 3	149-654	J6-1103	46-782	582-60920	1, 2, 4, 5	149-654
J6-1101	46-782	582-60910	1, 2, 4, 5	149-654					

J6-1000 NOTES

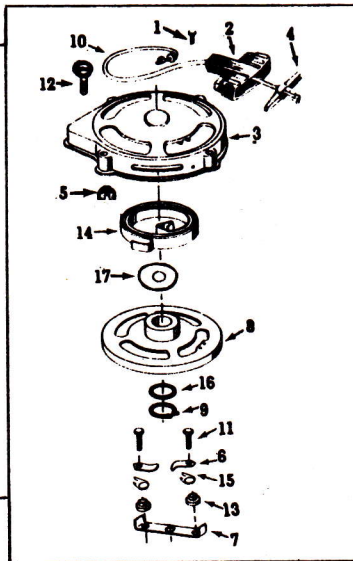
- Note 1 Use (204-85-500 Std.), (206-85-500, .010 O.S.) Piston Ass'y, 245-120 Connecting Rod Ass'y, 203-212 Wrist Pin and (2) 232-164 Retainer Wrist Pin.
- Note 2 Use 215-496-500 Reed Plate Ass'y, 293-96 Reed Valve, 293-97 Reed Stop, 258-516 Screw-Reed Valve to Plate, 183-141 Nut-Reed Valve Screw, 94-360 Gasket-Reed Valve to Block, 94-438 Gasket-Induction Bracket to Reed.
- Note 3 Use 26-694 Induction Bracket and 69-5 Connector-Induction Bracket Impulse Hose.
- Note 4 Use 26-698-500 Induction Bracket, 39-957-500 Carburetor Ass'y, 215-515-500 Plate Ass'y-Bearing, 220-160 Pump Fuel, 183-256 Nut-Fuel Pump Lock, 69-5 Connector-Impulse Line, 69-310 Elbow-Impulse Line.
- Note 5 Use 259-745-500 Housing Ass'y-Blower, (2) 203-221 Pin-Panel Guide, (3) 258-829 Screw and (1) 258-949 Screw-Housing to Bearing Plate, 259-746-500 Shroud Ass'y, 265-223-500 Starter Ass'y Recoil, 199-8 Control Panel, (3) 263-384 Spring-Control Panel, (3) 304-134 Washer-Control Panel, 157-335 Control Arm, 304-25 Lock Washer Flywheel, 121-220-500 Handle Ass'y-Steering Complete.

CARBURETOR 39-957-500 SERVICE AS STANDARD 39-944-500

265-223-500 RECOIL ASSEMBLY

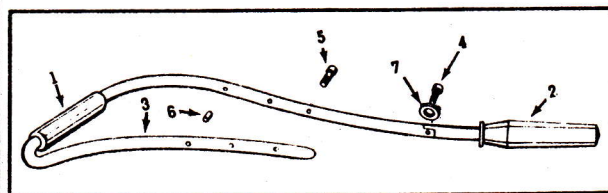
Ref. No.	Part Number	Description	Qty.
1.	258-988	BOLT-Shroud to Starter	2
2.	121-6	HANDLE-Recoil	1
3.	124-167-500	HOUSING ASS'Y-Recoil	1
4.	136-2	INSERT-Recoil Handle	1
5.	183-263	NUT-Shroud to Starter	2
*6.	157-239	PAWL-Starter	2
*7.	215-437	PLATE-Base Pawl	1
8.	219-151-500	PULLEY ASS'Y-Recoil	1
9.	232-147	RETAINER-Tru-Arc.	1
10.	246-7	ROPE-Starter 58" Long	1
*11.	258-851-500	SCREW-Starter Pawl	2
12.	258-987	SCREW-Shroud to Housing	2
*13.	304-524	SPACER-Starter Pawl	2
14.	263-67	SPRING-Return Rope	1
*15.	263-164	SPRING-Starter Pawl	2
16.	304-547	WASHER-Recoil Starter Shaft	3
17.	304-609	WASHER-Recoil Starter Shaft	1

* Indicates Parts Not Included With Starter

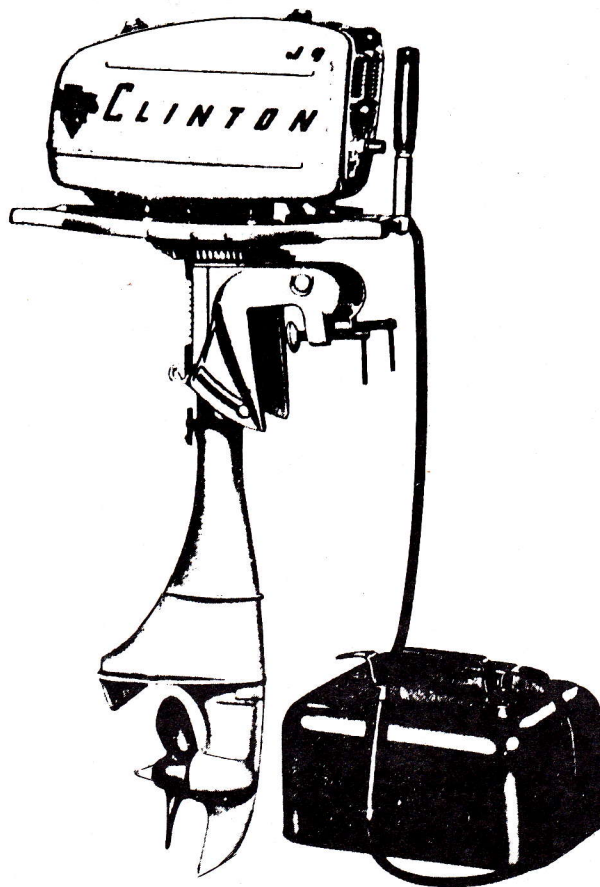


121-220-500 HANDLE ASSEMBLY

Ref. No.	Part Number	Description	Qty.
1.	121-224	GRIP-Carrying	1
2.	121-223	GRIP-Steering	1
3.	121-221	HANDLE-Carrying	1
4.	259-989	SCREW-Handle	1
5.	258-828	SCREW-Handle to Column	6
6.	304-630	SPACER-Handle to Column	2
7.	304-134	WASHER-Steering Handle	2



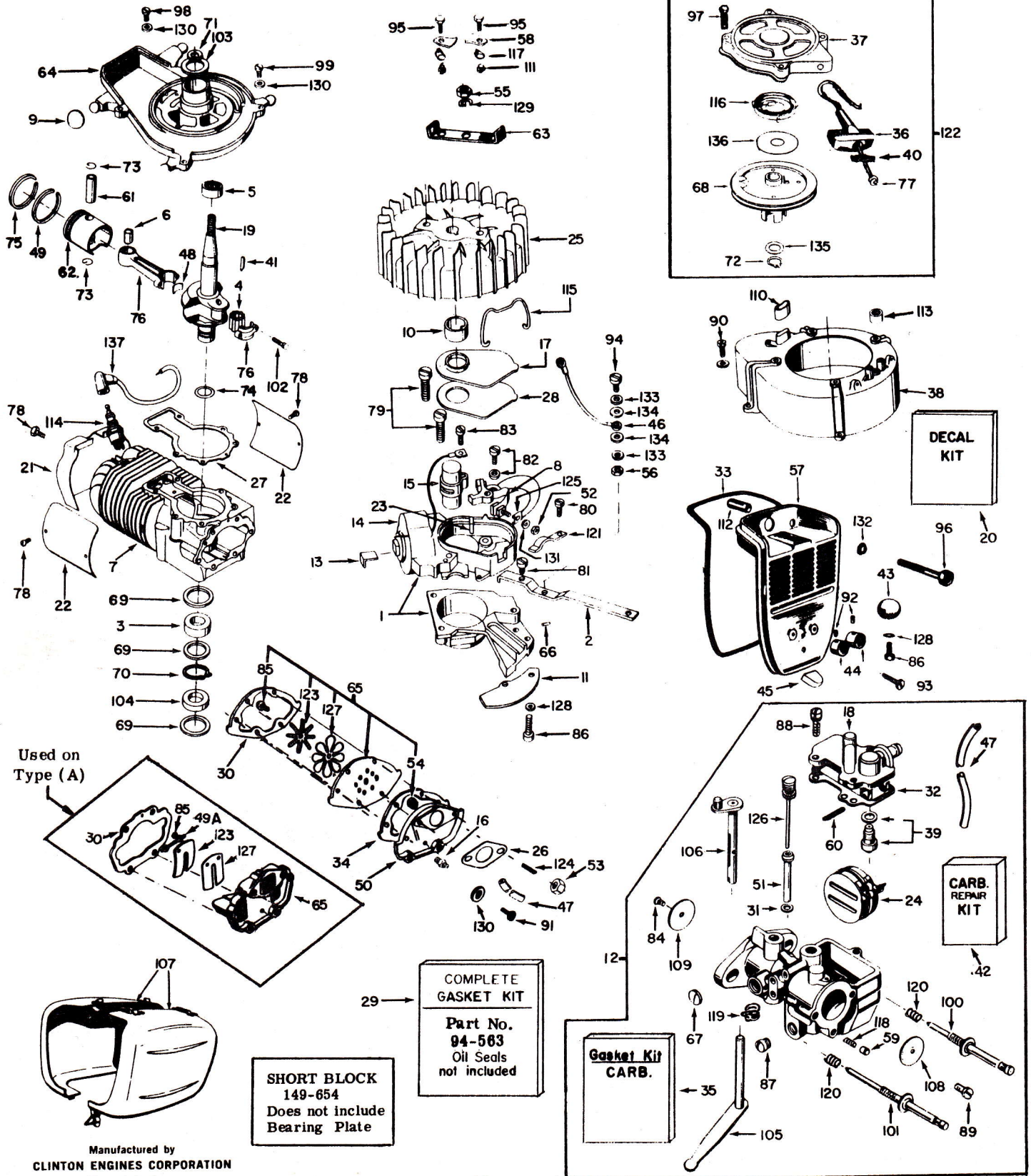
J9-1000
BASIC PARTS LIST
&
MODEL VARIATIONS



BASIC PARTS LIST

J9-1000

POWERHEAD



COMPLETE GASKET KIT
 Part No. 94-563
 Oil Seals not included

SHORT BLOCK 149-654
 Does not include Bearing Plate

Gasket Kit CARB.

CARB. REPAIR KIT

DECAL KIT

Manufactured by
CLINTON ENGINES CORPORATION
 Maquoketa, Iowa

POWERHEAD

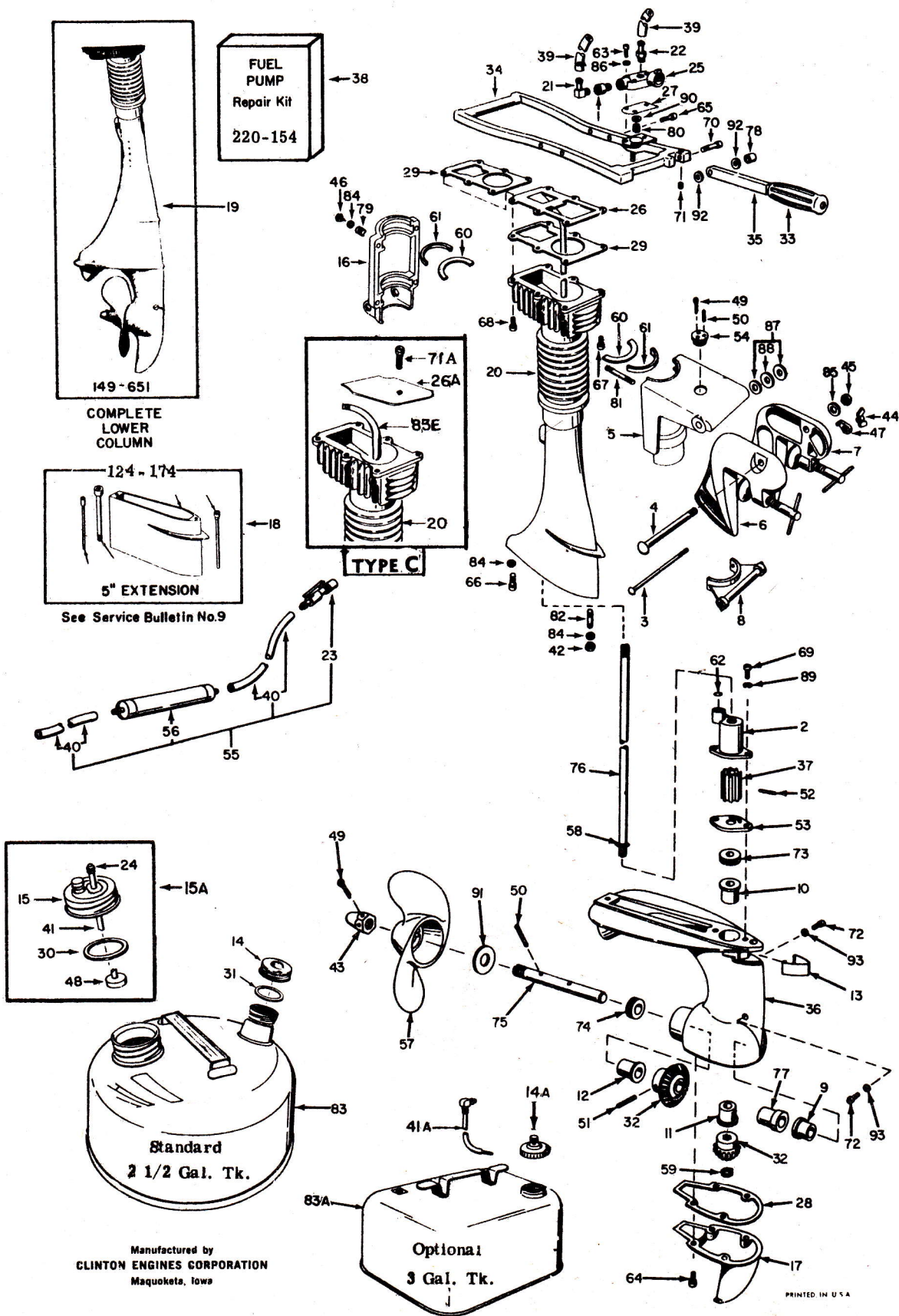
PARTS LIST

Ref. No.	Part Number	Description	Qty.	Ref. No.	Part Number	Description	Qty.
1.	1-83-500	ADAPTOR & MAG.-Incl. No. 8, 14, 15	1	68.	219-151-500	PULLEY ASS'Y	1
2.	157-335	ARM-Ignition Control	1	69.	232-148	RETAINER-Bearing	3
3.	20-4	BEARING-Ball Block	1	70.	232-73	RETAINER-Crankshaft	1
4.	20-197-500	BEARING-Ndle. (Connect. Rod)	1	71.	232-141	RETAINER-Brng. Plt. O. Seal	1
5.	20-198-990	BEARING-Needle Brng. Plt.	1	72.	232-147	RETAINER-Tru-Arc Recoil	1
6.	20-226	BEARING-Wrist Pin Type (B)&(C)	1	73.	232-40	RETAINER-Wrist Pin Type (A&D)	2
7.	22-704	BLOCK ASS'Y-Cylinder	1		232-164	RETAINER-Wrist Pin Ty. (B)&(C)	2
8.	135-7-500	BREAKER POINT ASS'Y	1	74.	232-137	RING-"O" Ring Crankshaft	1
9.	94-426	BUTTON-Shroud Spacer	4	75.	233-45	RING-Piston Std.	3
10.	157-29	CAM- Breaker Points	1		235-45	RING-Piston .010 O.S.	
11.	157-339	CAM-Throttle	1		237-45	RING-Piston .020 O.S.	
12.	39-715-500	CARBURETOR ASS'Y	1	76.	245-118	ROD-Incl. #4, 48, 102 Type (A&D)	1
13.	81-20	CLIP-Coil Core	1		245-120	ROD-Incl. #4, 6, 48, 102 Ty. (B)&(C)	1
14.	135-13-990	COIL ASS'Y-Ignition	1	77.	246-7	ROPE-Starter 58" Long	1
15.	135-29-990	CONDENSER ASS'Y-Ignition	1	78.	258-936-500	SCREW-Air Deflectors to Blocks	6
16.	69-5	CONNECTOR-Hose	1	79.	258-108-500	SCREW & L'W ASS'Y-Stator	2
17.	45-15	COVER-Breaker Box	1	80.	258-119	SCREW-Clip Spring	1
18.	45-316	COVER-Float Bowl	1	81.	258-123	SCREW-Mag. Ass'y to Adaptor	1
19.	46-782	CRANKSHAFT	1	82.	258-297-500	SCREW & L'W ASS'Y-Points	1
20.		DECAL-Kit	1	83.	258-299	SCREW-Condenser to Stator	1
21.	45-329	DEFLECTOR-Cylinder Head	1	84.	258-336	SCREW & L'W ASS'Y-Thr. Vlv.	1
22.	259-411	DEFLECTOR-Cylinder Air	2	85.	258-616	SCREW-Reed Vlv. Type (A)	2
23.	94-189	FELT-Cam Wiper	1		258-516	SCREW-Reed Vlv. Type (B)(C)&D	1
24.	82-19	FLOAT & LEVER ASS'Y	1	86.	258-616	SCREW-Cam Friction Plt. to Adaptor & Control Knob	3
25.	83-95-500	FLYWHEEL ASS'Y	1	87.	258-783	SCREW-Headless Set (Carb.)	1
26.	94-30	GASKET-Carb. to Reed Plate	1	88.	258-784-500	SCREW & L'W ASS'Y-Carb.	3
27.	94-105	GASKET-Brng. Plt. .030 Std.	1	89.	258-787-500	SCREW & L'W ASS'Y-Ch. Shutter	1
	93-105	GASKET-Brng. Plt. .025 U/S		90.	258-829	SCREW-Hsg. to Brng. Plt.	4
	95-105	GASKET-Brng. Plt. .035 U/S		91.	258-834-500	SCREW-Manifold to Block	2
28.	94-241	GASKET-Breaker Box Cover	1	92.	258-839	SCREW-Set, Control Knob	2
29.	94-563	GASKET-Kit Complete	1	93.	258-842-500	SCREW-Control Panel	1
30.	94-430	GASKET-Reed to Block Type (A)	1	94.	258-848	SCREW-Shorting Wire	1
30A.	94-546	GASKET-Reed to Blk. Type (B)&(C)&(D)	1	95.	258-851-500	SCREW-Starter Pawl	2
31.	94-403	GASKET-Main Nozzle	1	96.	258-852	SCREW-Control Panel	2
32.	94-404	GASKET-Float Bowl Cover	1	97.	258-861	SCREW-Starter to Housing	4
33.	94-427	GASKET-Control Panel	1	98.	258-864	SCREW-Brng. Plt. to Blk.	2
34.	94-547	GASKET-Man. Type (B)(C)&D	1	99.	258-865	SCREW-Brng. Plt. to Block	4
35.	94-562	GASKET & PKING. SET-Carb.	1	100.	258-868	SCREW-Carb. (Main Adjustment)	1
36.	121-6	HANDLE-Recoil	1	101.	258-869	SCREW-Idle Adjustment	1
37.	124-167-500	HOUSING ASS'Y-Recoil	1	102.	258-901	SCREW-Rod Cap to Rod	2
38.	259-688	HOUSING-Blower	1	103.	94-257	SEAL-OIL (Bearing Plate)	1
39.	94-139-500	INLET NEEDLE & SEAT ASS'Y	1	104.	94-388-500	SEAL OIL-Block (Lower)	1
40.	136-2	INSERT-Recoil Handle	1	105.	6-300-500	SHAFT & LEVER ASS'Y-Choke	1
41.	148-4	KEY-Flywheel	1	106.	6-301-500	SHAFT & LEVER ASS'Y-Throttle	1
42.	39-907	KIT-Repair Carburetor	1	107.	259-453-500	SHROUD ASS'Y	1
43.	121-178	KNOB-Control Arm	1	108.	39-693	SHUTTER-Choke	1
44.	121-180	KNOB-Carburetor Adjust	2	109.	39-719	SHUTTER-Throttle	1
45.	121-181	KNOB-Choke	1	110.	20-188	SLEEVE-Shroud Spacer	1
46.	307-278-500	LEAD WIRE-Shorting	1	111.	304-524	SPACER-Starter Pawl	2
47.	158-25	LINE-Fuel (Cut 7.00 in. Long)	2	112.	304-529	SPACER-Control Panel	2
48.	136-77	LINER-Connecting Rod	2	113.	304-548	SPACER-Starter to Hsg.	4
49.	148-31	LOCK-Piston Ring	3	114.	267-13-500	SPARK PLUG-J12J Champion	1
49A.	81-113	LOCK-Reed Valve Type (A)	1	115.	263-10	SPRING-Breaker Box Cover	1
50.	26-694	MANIFOLD-Intake Type (B)&(C)&(D)	1	116.	263-67	SPRING-Return Recoil Rope	1
51.	182-49	NOZZLE-Main	1	117.	263-164	SPRING-Starter Pawl	2
52.	183-21	NUT-Hex. Terminal	2	118.	263-218	SPRING-Choke Friction Pin	2
53.	183-29-500	NUT-Carb. to Manifold	2	119.	263-297	SPRING-Throttle Shaft, Return	1
54.	183-141	NUT-Reed Valve Type (B)(C)&D	1	120.	263-298	SPRING-Adjusting Screws Carb.	2
55.	183-158	NUT-Flywheel	1	121.	263-318	SPRING CLIP-Control Arm	1
56.	183-228	NUT-Lock Shorting Wire	1	122.	265-223-500	STARTER ASS'Y-Recoil	1
57.	900-307	PANEL CONTROL	1	123.	293-58	STOP-Reed Valve Type (A)	1
58.	157-239	PAWL-Starter	2		293-97	STOP-Reed Valve Type (B)(C)&D	1
59.	39-694	PIN-Choke Friction	1	124.	24-86	STUD-Carb. to Manifold	2
60.	203-172	PIN-Float Lever	1	125.	307-230	TERMINAL-Jamtitle	1
61.	203-61	PIN-Wrist Type (A) & D	1	126.	158-345-500	TUBE & PLUG-Carb. By-pass	1
	203-212	PIN-Wrist Type (B) & (C)	1	127.	293-50	VALVE-Reed Type (A)	1
62.	204-54	PISTON-Std. Type (A) & D	1		293-96	VALVE-Reed Type (B)(C)&D	1
	206	PISTON-.010 O.S. Type (A) & D		128.	304-1	WASHER-Cont. Knob & Thr. Cam	3
	207	PISTON-.020 O.S. Type (A) & D		129.	304-25	WASHER-Starter Cup	1
	204-85-500	PISTON ASS'Y-Std. Type (B)&(C)	1	130.	304-134	WASHER-Mfld. & Brng. Plt. to Blk.	8
	206-85-500	PISTON ASS'Y-.010 Type (B)&(C)		131.	304-290	WASHER TERMINAL	1
	207-85-500	PISTON ASS'Y-.020 Type (B)&(C)		132.	304-377	WASHER-Flat (Control Panel)	2
63.	215-437	PLATE-Base Pawl	1	133.	304-527	WASHER-Flat (Shorting Wire)	2
64.	215-441-500	PLATE-Brng. Incl. No. 5	1	134.	304-534	WASHER-Fiber (Shorting Wire)	2
65.	215-460-500	PLATE ASS'Y-Reed Type (A)	1	135.	304-547	WASHER-Recoil Starter Shaft	3
	215-496-500	PLATE-Reed Type (B)(C)&D	1	136.	304-609	WASHER-Recoil Starter Shaft	1
66.	135-243-500	PLUG ASS'Y-Friction	1	137.	307-301-500	WIRE-Lead High Tension	1
67.	216-31	PLUG-Expansion(Carb.)	1				

BASIC PARTS LIST

J9-1000

LOWER COLUMN



LOWER COLUMN PARTS LIST

Ref. No.	Part Number	Description	Qty.	Ref. No.	Part Number	Description	Qty.
1.	293-146-500	BALL CHECK ASS'Y	1	47.	900-267	PAWL-Guide (Thrust Brkt.)	1
2.	220-142	BODY-Water Pump	1	48.	25-38	PICKUP-Fuel	1
3.	24-78	BOLT-Carriage Mtg. Bracket	1	49.	203-166	PIN-Cotter (1-Spare)	2
4.	24-84	BOLT-Carriage Mtg. Bracket	1	50.	203-166	PIN-Shear 1-3/16 x 5/32 Dia. (2-Spare)	3
5.	26-508	BRACKET-Swivel	1	51.	203-167	PIN-Roll (Bevel Gear)	1
6.	26-519-500	BRACKET ASS'Y-Stern(Starbrd.)	1	52.	203-197	PIN ROLL-Water Pump	1
7.	26-520-500	BRACKET ASS'Y-Stern(Port)	1	53.	900-288	PLATE-Water Pump	1
8.	26-521-500	BRACKET ASS'Y-Thrust	1	54.	216-94	PLUG-Spare Shear Pin	1
9.	20-167	BUSHING-Propeller Rear	1	55.	220-137-500	PRIMER PUMP & LINE ASS'Y	1
10.	28-53	BUSHING-Drive Shaft (Upper)	1	56.	220-126-500	PRIMER PUMP ASS'Y	1
11.	28-54	BUSHING-Drive Shaft (Lower)	1	57.	217-1-500	PROPELLER-(Standard)	1
12.	28-55	BUSHING-Propeller Shaft (Front)	1		217-4	PROPELLER-Bronze (Optional)	1
13.	45-324	CAP-Nut (Cavity)	1	58.	232-133	RETAINER-Ring Drive Shaft	1
14.	45-456	CAP-Fuel (Sm.) 2 1/2 Gal. Tk.	1	59.	232-134	RETAINER-Pinion Gear	1
14A.	45-191	CAP ASS'Y-Fuel 3 Gal. Tk.	1	60.	44-82	RING-Friction	4
15.	45-455	CAP-Fuel Pickup 2 1/2 Gal. Tk.	1	61.	232-121	RING-Bearing	4
15A.	45-465	CAP ASS'Y-Fuel 2 1/2 Gal. Tk.	1	62.	232-135	RING-"O" Ring	1
16.	900-241	CAP-Swivel Bracket	1	63.	258-29	SCREW-Pump Cover	3
17.	900-287	CAP-Gear Housing	1	64.	258-825	SCREW-Gear Housing Cap	4
18.	124-174	COLUMN-Extension Kit 5"	1	65.	258-828	SCREW-Handle to Column	6
19.	149-651	COLUMN-Kit Complete	1	66.	258-832	SCREW-Housing to Column	1
20.	124-187	COLUMN & MUFFLER ASS'Y	1	67.	258-833	SCREW-Column to Power Head	4
21.	69-191	CONNECTOR-Elbow	1	68.	258-834	SCREW-Column to Power Head	2
22.	69-245	CONNECTOR	1	69.	258-857	SCREW-Water Pump Body	2
23.	69-258-500	CONNECTOR & CATCH ASS'Y	1	70.	258-859	SCREW-Steering Handle	1
24.	45-458-500	COVER ASS'Y-Fuel Tank Pickup.	1	71.	258-860	SCREW-Set (Steering Handle)	1
25.	220-134-500	COVER ASS'Y-Fuel Pump	1	71A.	258-849	SCREW-Deflector Type (C)	1
26.	259-547-500	DEFLECTOR & TUBE-Type (A&B)	1	72.	258-863	SCREW-Filler & Drain	2
26A.	259-789-500	DEFLECTOR ASS'Y-Type (C)	1	73.	94-400	SEAL-Oil (Drive Shaft)	1
27.	220-132	DIAPHRAGM-Fuel Pump	1	74.	94-401	SEAL-Oil (Propeller Shaft)	1
28.	94-386	GASKET-Gear Housing Cap	1	75.	6-299	SHAFT-Propeller	1
29.	94-429	GASKET-Exhaust Deflector	2	76.	6-302	SHAFT-Drive	1
30.	94-643	GASKET-Fuel Cap 2 1/2 Gal. Tk.	1	77.	304-517	SPACER-Propeller Shaft	1
31.	94-644	GASKET-Fuel Cap 2 1/2 Gal. Tk.	1	78.	304-543	SPACER-Handle Pivot	1
32.	108-425	GEAR PINION & GEAR BEVEL (Sold as Matched Set Only)	1	79.	263-293	SPRING-Compression	4
33.	121-184	GRIP-Handle	1	80.	263-317	SPRING-Diaphragm	1
34.	121-191	HANDLE-Carrying	1	81.	24-76	STUD-Bracket Swivel	4
35.	121-192	HANDLE-Steering	1	82.	24-83	STUD-Column	1
36.	124-136-500	HOUSING ASS'Y-Gear (Incl. Ref. Nos. 9, 10, 11, 12, 73, 74,)	1	83.	277-496-500	TANK ASS'Y-Doesn't Incl. 24, 55 2 1/2 Gal. Tk.	1
37.	220-136-500	IMPELLER ASS'Y-Water Pump	1	83A.	277-234-500	TANK ASS'Y- 3 Gal. Tk.	1
38.	220-154	KIT-Fuel Pump (Incl. Spring, Washer & Diaphragm)	1	83B.	158-453	TUBE-Water Type (C)	1
39.	158-25	LINE-Fuel Cut 7" Long	2	84.	304-134	WASHER-Housing to Column	6
40.	158-357	LINE-Fuel Tank	2	85.	304-337	WASHER-Mounting Bracket	1
41.	158-274	LINE-Pickup	1	86.	304-377	WASHER-Flat (Pump Cover)	3
41A.	69-139-500	LINE-Pickup 3 Gal. Tk.	1	87.	304-521	WASHER-Swivel Bracket	4
42.	183-33	NUT-Lock Gear Hsg. to Column	1	88.	304-522	WASHER-Friction	2
43.	183-209	NUT-Propeller	1	89.	304-532	WASHER-Lock (Pump Housing)	2
44.	183-210	NUT-Wing (Thrust Bracket)	1	90.	304-537	WASHER-Diaphragm Spring	1
45.	183-211	NUT-Lock (Bracket Ass'y)	1	91.	304-541	WASHER-Propeller Shaft	1
46.	183-226	NUT-Lock (Swivel Bracket Cap)	4	92.	304-542	WASHER-Handle Pivot	2
				93.	304-545	WASHER-Filler Screw	2

SPECIFICATIONS

BORE AND STROKE ----- 2 1/8 x 1 5/8
 DISPLACEMENT (Cu. In.) ----- 5.76
 IGNITION ----- High Tension Magneto
 MAGNETO POINT SETTING ----- .020
 SPARK PLUG ----- J12J Champion
 SPARK PLUG SETTING ----- .025
 CARBURETOR ----- Float (Tillotson)
 CRANKSHAFT ----- Forged
 BEARINGS (Engine) ----- Needle and Ball
 BEARINGS (Gear Housing) ----- Oilite Bronze
 STARTER ----- Recoil
 FUEL SYSTEM ----- Fuel Pump

FUEL TANK CAPACITY----- 2 1/2 Gallons
 GEAR RATIO ----- 14 - 21
 PROPELLER TYPE ----- Shear Pin - Semi Weedless
 PROPELLER DIA. & PITCH ----- 7 - 4 1/2
 STEERING ----- 180° Pivot-Reverse
 LUBRICANT (Gear Housing) ----- SAE 90
 FUEL MIXTURE --- 1/4 Pint Motor Oil to one
 Gallon of Regular Gasoline
 IDLE SPEED ----- 800 R. P. M.
 RECOMMENDED FULL THROTTLE
 OPERATION RANGE ----- 4000 - 5000 R. P. M.
 PEAK HORSEPOWER ---- At 6800 R. P. M. Sea Level
 Barometer at 60° F.

MODEL VARIATIONS J9-1000



Opposite each outboard model notes have been assigned to cover part numbers required in addition to or in place of standard parts.

SEE NAME PLATE ON SWIVEL BRACKET FOR OUTBOARD MODEL

MODELS	CRANKSHAFT	NOTES	SHORT BLOCK	MODELS	CRANKSHAFT	NOTES	SHORT BLOCK
J9-1000	46-782	Std. Model	149-654	J9-1107	46-782	6	149-654
J9-1100	46-782	1	149-654	J9-1108	46-782	7	149-654
J9-1101	46-782	2	149-654	J9-1112	46-782	Short Blk.	149-654
J9-1102	46-782	2	149-654	J9-1113	46-782	8	149-654
J9-1103	46-782	3	149-654	J9-1114	46-782	9	149-654
J9-1104	46-782	Std. Model	149-654	J9-1115	46-782	2 & 8	149-654
J9-1105	46-782	4	149-654	J9-1116	46-782	Std. Model	149-654
J9-1106	46-782	5	149-654	J9-1150	46-782	10	149-654
				J9-1151	46-782	8 & 10	149-654

J9-1000 SERIES NOTES

- Note 1 Use 58-344 Decal Apache left hand, 58-343 Decal Apache right hand.
- Note 2 Use 58-340 Decal Chief right hand, 58-341 Decal Chief left hand.
- Note 3 This unit is the (Propulsion Research Inc., 7644 Knox Ave. S., Minneapolis, Minnesota) P-500 Jet. Clinton supplies the Power Head and Handle Ass'y only.
- Note 4 Use 58-482 Decal Featherweight right side, 58-483 Decal Featherweight left side, 58-544 Decal Fuel Mix, 58-334 Decal Gasoline.
- Note 5 Use (2) 58-548 Decal Apache.
- Note 6 Use (2) 58-559 Decal Gulf Queen.
- Note 7 Use 83-103-500 Flywheel, 1-89-500 Adaptor, Magneto and Generator Coils, 135-265 Condenser, 157-375 Breaker Cam., 135-263 Generating Coils, (4) 259-583 Shield Lighting Coils, (2) 81-164 Clip Generating Coil Retaining, 135-255-500 Resistor Ass'y, 266-45 Receptical Cigar Lighter, 45-354 Cover Receptical, 307-298 Sleeve Insulating, 307-138-500 Wire Resistor to Receptical, 183-21 Nut Wire to Receptical, and 900-358 Control Panel.
- Note 8 Use 277-234-500 3 Gal. Tank, 45-191 Cap Fuel Tank, 69-139-500 Elbow Fuel Pickup, and 58-328 Decal Fuel Mix.
- Note 9 Use 215-495-500 Bearing Plate, 157-408 Arm Ignition and Throttle Control, 265-197 Cup Starter, 304-536 Washer Lock Flywheel, 265-219-500 Recoil Starter Ass'y, 183-25-500 Nut Recoil Stud, 277-483-500 Housing Flywheel, 259-684-500 Shroud (Lower), 199-6 Panel Control, (4) 258-926 Screw Panel, (4) 183-141 Nut Shroud to Housing, 94-544 Gasket Shroud, (4) 183-1-500 Nut & L'Washer Housing to Bearing Plate, 259-760 Shroud, 20-233 Bushing Snap Rope Guide, 900-395 Knob Control Arm, 258-936-500 Screw Control Knob, 58-571 Decal Chief right hand, 58-572 Decal Chief left hand, 58-541 Decal Control Panel, and 58-543 Decal Throttle, (4) 183-251 Nut Speed-Panel.
- Note 10 Use (2) 58-635 Decal Peerless, (2) 58-634 Decal Trade Mark, (2) 58-642 Decal V.