

A Wide Range of Models are Made By



For Farm, Home and Industrial Use.

VS-100-2000	H.P.	R.P.M.
	1.5	2200
	2.0	2800
	2.5	3600

## GENERAL SPECIFICATIONS

Model	Type	Description	Starter	Weight
VS-100-2000	Air-Cooled	Vertical Shaft	Rope or Recoil	19 lbs.

**BORE:** 2 $\frac{3}{8}$ "

**STROKE:** 1 $\frac{5}{8}$ "

**TYPE:** Single cylinder, L-Head, air-cooled.

**AIR-COOLED:** Large capacity, curved vane blower cast integral with flywheel. Air passes through deep fins to maintain correct operating temperature.

**PISTON DISPLACEMENT:** 7.2 cu. inches.

**IGNITION:** Very high voltage, built-in flywheel magneto for faster starting. Moisture and dust proof with fully enclosed ignition points. Safety stop switch.

**SPARK PLUG:** 14 m.m.

**LUBRICATION:** Positive pressure supplied by automotive type oil pump.

**CARBURETOR:** Full float feed with idle and high speed adjustment.

**GOVERNOR:** Adjustable pneumatic type, statically balanced.

**MAIN BEARINGS:** Bronze and aluminum.

**CRANKSHAFT:** Ductile iron. Counterweights and cam gear drive integral with shaft.

**CONNECTING ROD:** I-Beam, aluminum alloy with extra large bearings.

**PISTON:** Aluminum alloy, Clinton-engineered for efficient combustion.

**PISTON RINGS:** Two compression and one oil control. Treated surfaces.

**VALVES:** Forged steel. Exhaust valve provided with heat-resistant alloy head.

**VALVE SEATS:** Alloy inserts.

**VALVE TAPPETS:** Hardened and ground.

**CYLINDER AND CRANKCASE:** Die cast cylinder block and crankcase with large amount of cooling area for cool operation. A close-grained cast iron liner is die cast in block. Closed breather system.

**CYLINDER HEAD:** Aluminum, removable with extra deep cooling fins.

**OIL FILLER:** Conveniently located for easy check of oil level and for filling.

**AIR CLEANER:** Heavy duty, automotive, dry type.

**FUEL TANK:** 1 $\frac{1}{2}$ -quart capacity, with gasoline strainer and shut-off.

**OIL RESERVOIR:** One and one-fourth pints capacity.

**DIRECTION OF ROTATION:** Counter-clockwise, viewed from power take-off shaft side.

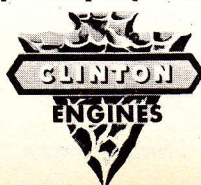
**FINISH:** Red heat-resisting enamel. Other colors available upon request.

### STANDARD EQUIPMENT

Standard equipment includes: Cast iron cylinder liner, replaceable bearing, closed breather system, positive high speed stop throttle lever with universal throttle control, dry-type horizontal air cleaner, high voltage dust and moisture-proof flywheel magneto, float feed carburetor, fuel tank, low back pressure muffler, blower housing screen, crankshaft machined to accommodate clutch and blade assembly, rope starter, splash-proof gas tank cap. Safety stop switch.

### SPECIAL EQUIPMENT

Special equipment includes: Remote throttle cable and controls, recoil starter, shorting terminal for remote stop hookup, electric starter, deluxe muffler, special paint finishes, fuel pump, Touch N' Go controls, kerosene conversion, angular muffler, resistor spark plug, special crankshaft extensions. (Quotations available on request.)

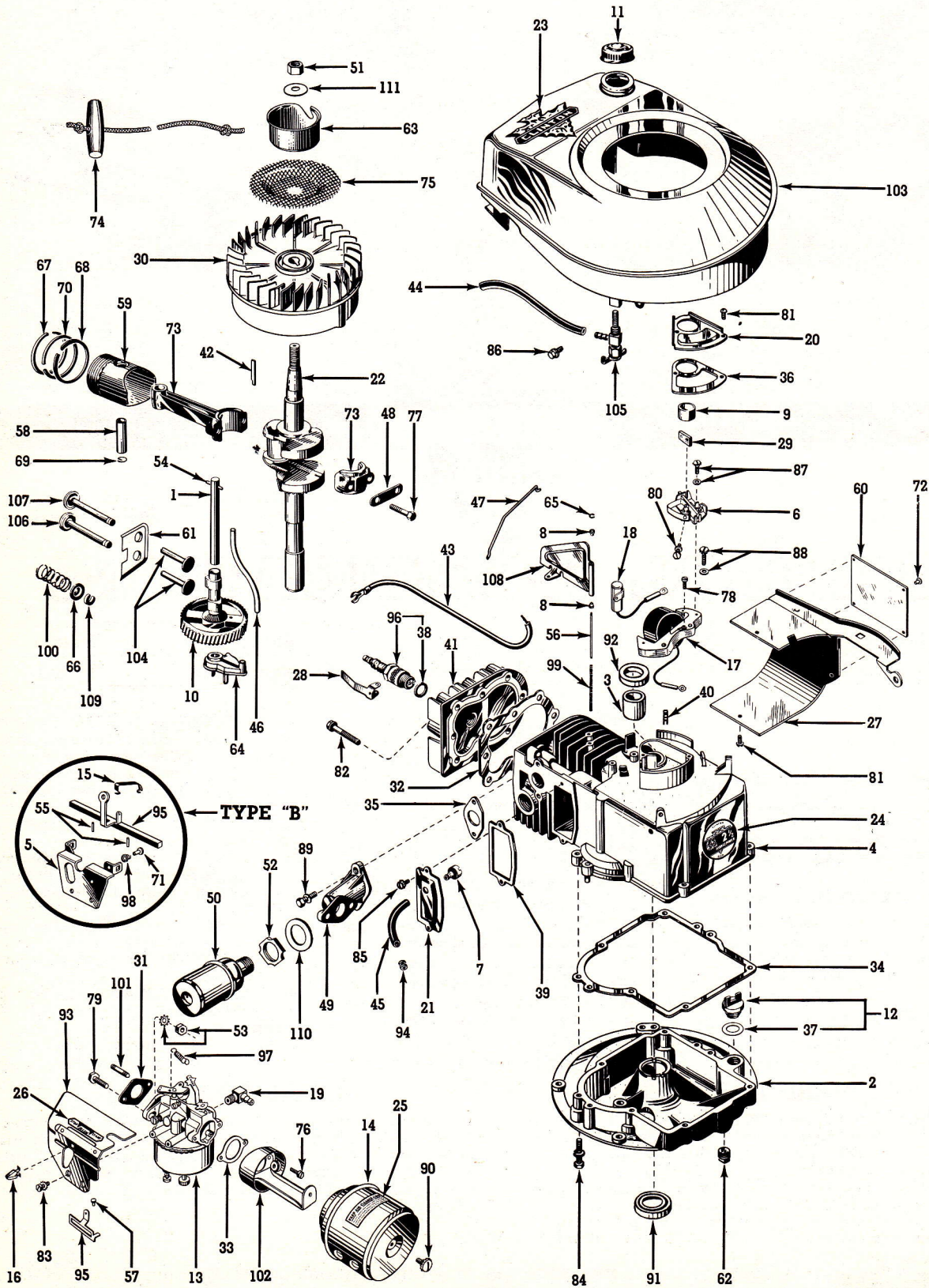


WORLD'S LARGEST MANUFACTURER OF A COMPLETE LINE OF AIR-COOLED GASOLINE ENGINES

**CLINTON ENGINES PROVIDE POWER**

FOR FARM • HOME • INDUSTRIAL EQUIPMENT

PRINTED IN U.S.A.



**CLINTON**

S	E	R	I	E	S
<b>VS-100-2000</b>					
G E M					

**BASIC  
TYPE**

SEC. II DIV. VS-100-2000  
PARTS CATALOG  
Revised April, 1958  
Supersedes Oct., 1957

There are two Basic Types of the VS-100-2000 Engines covered by this Basic Parts List. Parts not used on all types are noted. Those types are as follows: Serial Number Suffix "A"—referred to as Type A; Serial Number Suffix "B"—referred to as Type B.

MODEL VARIATIONS follow this Basic Parts List.

NOTE: See page "a" on "How to Identify Your Clinton Engine."

## BASIC PARTS LIST

Ref. No.	PART DESCRIPTION	Part No.	Quantity
1	AXLE ASSEMBLY — Camshaft (includes pin) -----	10310-A	1
2	BASE ASSEMBLY — Engine -----	10000-A	1
	NOTE: Assembly includes Ref. No. 91.		
3	BEARING — Main (Sleeve) -----	10380	1
4	BLOCK ASSEMBLY — Cylinder -----	10205-A	1
	NOTE: Assembly includes Ref. Nos. 3, 92.		
5	BRACKET — Slide Mounting (used on Type B) -----	10399	1
6	BREAKER POINTS ASSEMBLY -----	P5543	1
	NOTE: Assembly includes Ref. Nos. 29, 80, 87.		
7	BREATHER ASSEMBLY -----	6354	1
8	BUSHING — Air Vane -----	7239	2
9	CAM — Magneto Breaker -----	5707	1
10	CAMSHAFT ASSEMBLY -----	10008-A	1
11	CAP & GASKET ASSEMBLY — Fuel -----	4517-A	1
12	CAP & GASKET ASSEMBLY — Oil Filler -----	5096-1	1
13	CARBURETOR ASSEMBLY -----	14049	1
	For complete identification of carburetors, refer to Section III, Div. A, page 2.		
14	CLEANER ASSEMBLY — Air -----	21078-A	1
15	CLIP — Spring Anchor (used on Type B) -----	14358	1
16	CLIP — Spring, Carburetor (used on Type A) -----	10088	1
17	COIL ASSEMBLY — Magneto (With Laminations) -----	P5593-B	1
	COIL — Magneto (Without Laminations) -----	P5593-A	1
18	CONDENSER — Magneto -----	P5599-A	1
19	CONNECTOR — 90°, Flexible Fuel Line (Carburetor) -----	5052	1
20	COVER — Dust, Magneto Breaker Points -----	10382	1
21	COVER — Valve Chamber -----	10323	1
22	CRANKSHAFT -----	10100	1
23	DECAL — Arrowhead -----	3579	1
24	DECAL — Horsepower -----	3448	1
25	DECAL — Air Cleaner -----	3461	1
26	DECAL — Throttle Control -----	3487	1
27	DEFLECTOR ASSEMBLY — Air, Cylinder -----	10006-A	1
28	DEVICE — Ignition Shorting (Spark Plug) -----	3499	1
29	FELT — Lubrication, Cam Follower -----	P5504	1
30	FLYWHEEL ASSEMBLY -----	5597-A	1
31	GASKET — Paper (Carburetor to Manifold) -----	7168	1
32	GASKET — Cylinder Head -----	10253	1
33	GASKET — Support to Carburetor -----	3990	1
34	GASKET — Engine Base (.015 thick) -----	10254	1
	NOTE: .010 thick Gasket Available	10254-1	
35	GASKET — Asbestos (Manifold to Block) -----	7149	1
36	GASKET — Cover, Dust (Breaker Points) -----	10250	1
37	GASKET — Oil Filler Cap -----	5097	1
38	GASKET — Spark Plug -----	3115	1
39	GASKET — Valve Chamber Cover -----	10251	1
	GASKET KIT — Engine Overhaul -----	6329	1
40	GROMMET — Magneto (Breaker Lead Wire) -----	10367	1
41	HEAD — Cylinder -----	10011	1
42	KEY — Flywheel -----	10339	1
43	LEAD — Hi-Tension, Magneto -----	P2055	1
44	LINE — Flexible, Fuel -----	6316	1

**CLINTON**

S E R I E S  
**VS-100-2000**  
 G E M

**BASIC  
 TYPE**

**BASIC PARTS LIST (Continued)**

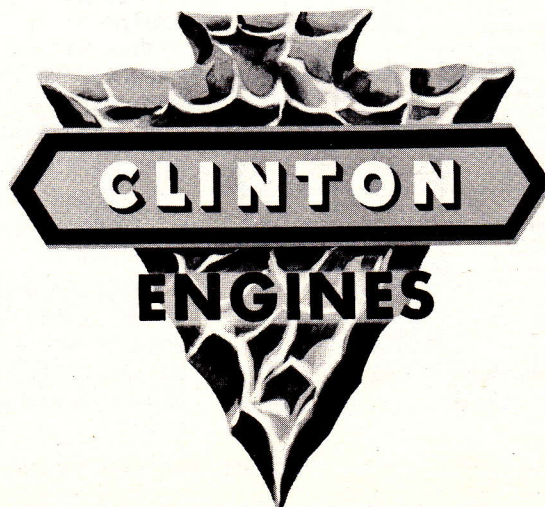
Ref. No.	PART DESCRIPTION	Part No.	Quantity
45	LINE — Flexible, Breather Tube	10352	1
46	LINE — Oil Distributor (Oil Pump)	10390	1
47	LINK — Air Governor	10020	1
48	LOCK — Double, Connecting Rod Screw	10318	1
49	MANIFOLD — Carburetor	10091	1
50	MUFFLER	3639	1
51	NUT — Hex., 7/16-20 (Starter Pulley)	5476	1
52	NUT — Lock, Muffler	4425	1
53	NUT & LOCKWASHER ASSEMBLY — 1/4-28 Hex. (Carb. Mtg.)	3255-A	2
54	PIN — Drive	10392	1
55	PIN — Drive (used on Type B)	9004	2
56	PIN — Pivot, Air Vane Governor	7238	1
57	PIN — Stop (Throttle Control) (used on Type A)	10089	1
58	PIN — Wrist	6024	1
59	PISTON — Standard	31001	1
	PISTON ASSEMBLY — Standard	31001-A	1
	NOTE: Assembly includes Ref. Nos. 58, 59, 67, 68, 69, 70.		
	NOTE: Piston Assemblies are available in the following oversizes: .005, .010, .020, .030 and .040. Order by Part Number and specify oversize.		
60	PLATE — Name (Air Deflector)	6530	1
61	PLATE — Valve Spring Retainer	10013	1
62	PLUG — 3/8 N.P.T. (Oil Drain)	5627	1
63	PULLEY — Starter	3299	1
64	PUMP ASSEMBLY — Oil	10385-A	1
65	RETAINER — Air Vane	4430	1
66	RETAINER — Valve Spring	3028	2
67	RING — Compression, Standard	6026	1
68	RING — Oil, Standard	6006	1
69	RING — Retainer, Wrist Pin	6034	2
70	RING — Scraper, Standard	6027	1
	RING SET — Standard	10023	1
	NOTE: Ring Sets are also available in the following oversizes: .005, .010, .020, .030 and .040. Order by Part Number and specify oversize.		
71	RIVET (used on Type B)	5825	1
72	RIVET — Tubular (4—Name Plate) (2—Flywheel Shield)	5469	6
73	ROD ASSEMBLY — Connecting	10002-A	1
	NOTE: Assembly includes Ref. Nos. 48, 77.		
74	ROPE ASSEMBLY — Starter	4266	1
75	SCREEN — Revolving	7187	1
76	SCREW — H.H.S., 8-32 x 7/16 (Support Assembly to Carburetor)	5812	2
77	SCREW — H.H.C., 1/4-28 x 1 1/4 (Connecting Rod Cap)	3235	2
78	SCREW — P.H.S.T., 4-40 x 1/4 (Coil to Laminations)	5641	1
79	SCREW — H.H.C., 1/4-28 x 1 (Carburetor to Manifold)	7205	1
80	SCREW — R.H.M., 6-32 x 1/4 (Breaker Points Terminal)	5664	1
81	SCREW — H.H. Slotted S.T., #8-32 x 3/8 (2—Deflector to Block) (2—Breaker Points Cover)	5644	4
82	SCREW — H.W.H., 5/16-18 x 1 7/8 (4—Tank Bracket, 4—Cylinder Head)	5654	8
83	SCREW & L'WASHER ASS'Y — H.H.C., 8-32 x 3/8 (Shroud to Carburetor and Manifold)	5644-A	3
84	SCREW & L'WASHER ASS'Y — H.H.C., 1/4-20 x 1 1/4 (Base to Block)	5613-G	7
85	SCREW & L'WASHER ASS'Y — H.H.C., #10-24 x 1/2 (Valve Chamber Cover)	5645-A	2
86	SCREW & L'WASHER ASS'Y — H.H.C., 1/4-20 x 3/8 (Tank to Block)	3632-G	2
87	SCREW & L'WASHER ASS'Y — R.H.M., 8-32 x 3/8 (Breaker Points to Block)	5444-F	1
88	SCREW & L'WASHER ASS'Y — P.H.S.T., #10-24 x 1 (Laminations to Block)	5682-A	2

**CLINTON**

S	E	R	I	E	S
<b>VS-100-2000</b>					
G E M					

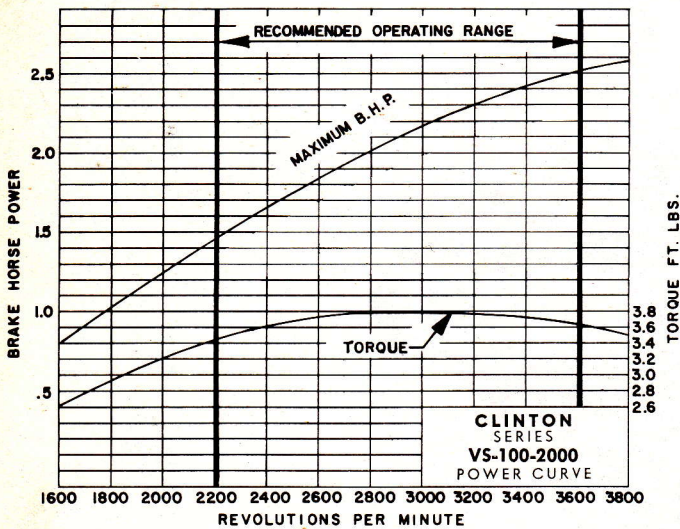
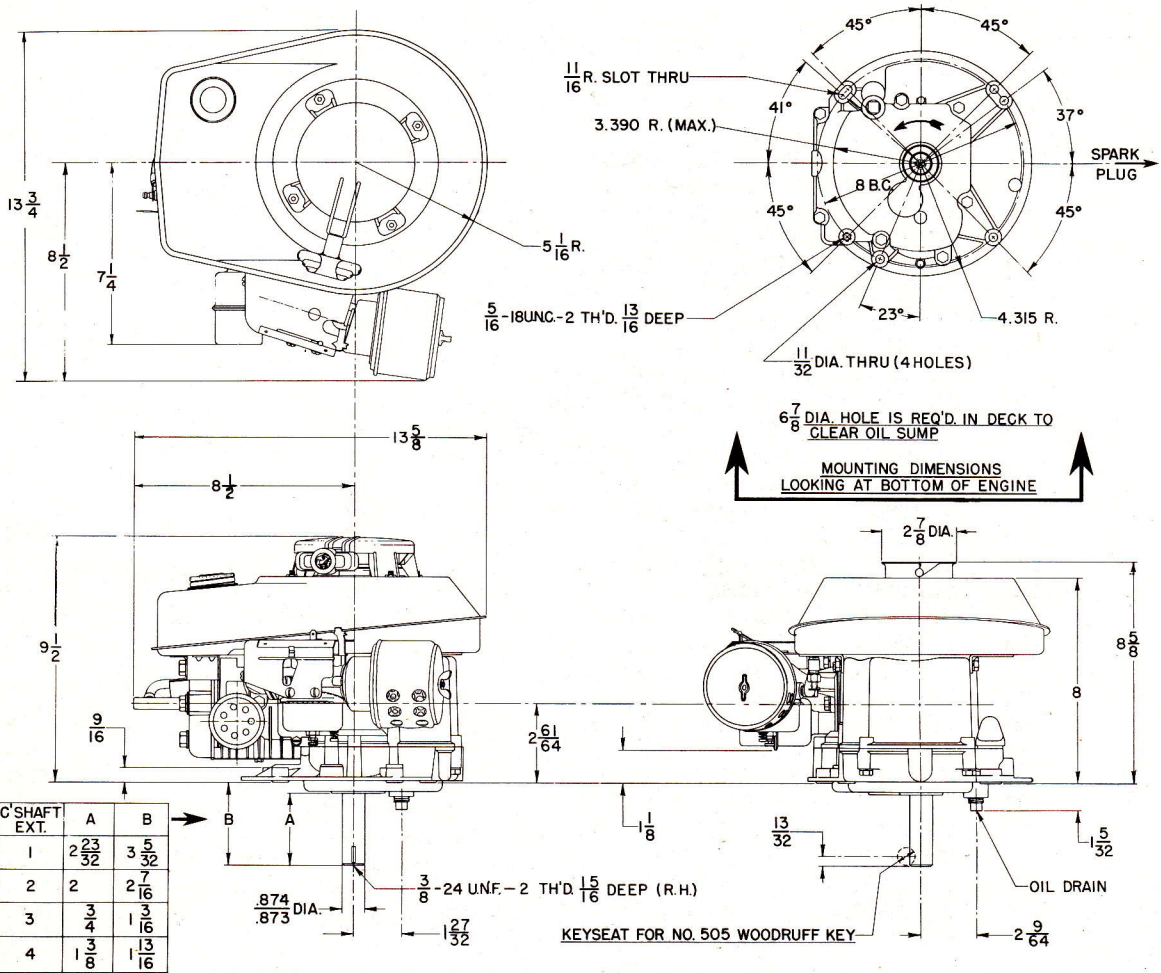
**BASIC  
TYPE**
**SEC. II. DIV. VS-100-2000  
PARTS CATALOG**  
 Revised April, 1958  
 Supersedes Oct., 1957
**BASIC PARTS LIST (Continued)**

Ref. No.	PART DESCRIPTION	Part No.	Quantity
89	SCREW & L'WASHER ASS'Y — H.H.C., 1/4-20 x 7/8 (Manifold to Block)	3294-G	2
90	SCREW & L'WASHER ASS'Y — P.H.S., #10-24 x 3/8 (Air Cleaner)	3216-A	1
91	SEAL — Oil (Engine Base)	4429	1
92	SEAL — Oil (Block)	10012	1
93	SHROUD ASSEMBLY — Carburetor (used on Type A)	10086-A	1
	SHROUD ASSEMBLY — Carburetor (used on Type B)	10401	1
94	SLEEVE — Connector, Breather Line	10353	1
95	SLIDE — Governor Regulating (used on Type A)	10087-A	1
	SLIDE — Governor Regulating (used on Type B)	10342-A	1
96	SPARK PLUG AND GASKET ASSEMBLY	K16303-A	1
97	SPRING — Air Governor (used on Type A)	10090	1
	SPRING — Extension (used on Type B)	10406	1
98	SPRING — Compression (used on Type B)	10373	1
99	SPRING — Compression (Air Vane)	10005	1
100	SPRING — Valve	3068	2
101	STUD — Carburetor to Manifold	6155	1
102	SUPPORT ASSEMBLY — Air Cleaner (used on Type A)	21077-A	1
	SUPPORT ASSEMBLY — Air Cleaner (used on Type B)	90297	1
103	TANK ASSEMBLY — Fuel	10370-D	1
	NOTE: Assembly includes Ref. No. 11.		
104	TAPPET — Valve	10009	2
105	VALVE — Fuel Shut-Off, Flexible Line	5051	1
106	VALVE — Exhaust	10301	1
	VALVE — Exhaust (.010 oversize)	10321	1
107	VALVE — Intake	10302	1
	VALVE — Intake (.010 oversize)	10322	1
108	VANE — Air Governor	10393	1
109	WASHER — "C" (Valve Keeper)	3291	2
110	WASHER — Flat, Steel (Muffler)	7444	1
111	WASHER — Spring Tension (Starter Pulley)	4119	1



**DIMENSIONAL SPECIFICATIONS AND POWER DATA**

Clinton Machine Company will supply detailed prints and engineering counsel upon request. Specifications and Dimensions are subject to change without notice.



**CLINTON POWER DATA**

The performance and power analysis figures for the Clinton Engine series show the rated Brake Horse Power developed from test-run engines. The standard engine equipped with standard air cleaner and muffler was used, in every case, for these tests and the figures have been corrected for barometer at sea level and temperature of 60° F. Production engines when shipped will develop not less than 85% of rated B.H.P.

Production engines, after run-in to reduce friction will develop not less than 95% of the rated B.H.P.

Engine power will decrease 3 1/2 % for each 1,000 feet above sea level, and 1% for each 10° F. above standard temperature of 60° F.

Unless otherwise specified, governors are set to operate at 3,400 R.P.M. (plus or minus 100 R.P.M.) without load. Complete details of installations requiring continuous operation at other than recommended speeds should be referred to the factory for approval.

CABLE ADDRESS: ENGINES U. S. A.



ENGINE DIVISION OF **CLINTON ENGINES CORPORATION**

MAQUOKETA, IOWA

FORMERLY: CLINTON MACHINE CO.

PRINTED IN U.S.A.

**CLINTON**

S E R I E S
<b>VS-100-2000</b>
G E M

**MODEL  
VARIATIONS**
**SEC. II, DIV. VS-100-2000**  
**PARTS CATALOG**  
 Revised January, 1959  
 Supersedes May, 1958

## MODEL VARIATIONS OF VS-100-2000 SERIES

The adaptation of Clinton Engines to a wide variety of uses results in what is known as "Model Variations." Following is the complete list of all Models produced up to issue date (shown above). Opposite each Engine Model listed are the Part Numbers and/or Assembly Numbers for the Series used IN ADDITION TO or IN PLACE OF the parts illustrated and shown on the Basic Parts List preceding this Model Variations List. Refer to other sections of this Manual when Assembly Numbers are given to find the Parts List for these assemblies.

See page (a) on "How to Identify Your Clinton Engine." Use the preceding Basic Parts List except as shown below.

ENGINE MODEL—See page (a), "How to Identify Your Clinton Engine."	FOOTNOTES (Check page three).	BASE—ENGINE (Part Numbers Shown). Refer to Sec. IV, Div. A for further information.	CONTROL GROUP (Control Group Illustration Numbers Shown). Refer to Sec. III, Div. D for Parts List.	CONTROL CABLE LENGTH—Replacement cable is furnished in 72" length ONLY, cut to length shown.	CRANKSHAFT (Part Numbers Shown). Refer to Sec. IV, Div. B for details and further information.	STARTER — RECOIL. Refer to Sec. III, Div. H for Parts List.	HOUSING ASSEMBLY — BLOWER (Part Numbers Shown). Refer to Basic Parts List for corresponding part.	MUFFLER OR MANIFOLD (Part Numbers Shown). Refer to Illustrated Basic Parts List for corresponding part.
VS-100-2103	Notes 1 & 2				10107	Yes	10313-B	
VS-100-2104			3855-56	72"		Yes	10313-B	
VS-100-2105	Notes 2 & 3					Yes	10313-B	
VS-100-2106	Note 4	10050-A				Yes	10313-B	
VS-100-2107	Note 3					Yes	10313-B	
VS-100-2108						Yes	10313-B	
VS-100-2109	Note 3				10109	Yes	10313-B	
VS-100-2110	Note 1	10052	3855-56	72"				4500
VS-100-2111	Note 1	10052			10106	Yes	10313-B	
VS-100-2112	Note 1	10052			10107	Yes	10313-B	
VS-100-2113	Note 1	10052			10109	Yes	10313-B	
VS-100-2114	Note 1	10052			10101	Yes	10313-B	
VS-100-2115	Note 1	10052	3855-56	72"		Yes	10313-B	4500
VS-100-2116	Note 1	10052			10103	Yes	10313-B	
VS-100-2117	Note 1	10052			10116	Yes	10313-B	
VS-100-2118					10119	Yes	10313-B	
VS-100-2120						Yes	10313-B	
VS-100-2121	Note 3		3855-56	72"		Yes	10313-B	
VS-100-2122	Note 3							
VS-100-2123	Note 3					Yes	10313-B	
VS-100-2124	Notes 5 & 6				10101	Yes	10313-B	
VS-100-2125	Note 3					Yes	10313-B	
VS-100-2126						Yes	10313-B	
VS-100-2127	Note 1	10056			10121	Yes	10313-B	
VS-100-2128	Note 3					Yes	10313-B	
VS-100-2129	Note 3				10101	Yes	10313-B	
VS-100-2130	Note 3							
VS-100-2131	Note 3					Yes	10313-B	
VS-100-2132	Note 3					Yes	10313-B	
VS-100-2133					10101	Yes	10313-B	
VS-100-2134					10119	Yes	10313-B	
VS-100-2135	Note 3					Yes	10313-B	
VS-100-2136	Note 2				10101	Yes	10313-B	

**CLINTON**

S E R I E S  
**VS-100-2000**  
G E M

MODEL  
VARIATIONS

MODEL VARIATIONS OF VS-100-2000 SERIES (Cont.)

ENGINE MODEL	FOOTNOTES	BASE—ENGINE	CONTROL GROUP	CONTROL CABLE LENGTH	CRANKSHAFT	STARTER—RECOIL	HOUSING ASSEMBLY—BLOWER	MUFFLER OR MANIFOLD
VS-100-2137	Note 1	10052				Yes	10313-B	
VS-100-2138	Note 3					Yes	10313-B	
VS-100-2139	Note 1	10052			10104	Yes	10313-B	
VS-100-2140	Note 2				10101			
VS-100-2141	Note 3				10101	Yes	10313-B	4500
VS-100-2142	Note 3					Yes	10313-B	
VS-100-2143	Note 3					Yes	10313-B	
VS-100-2144	Note 2					Yes	10313-B	
VS-100-2145	Note 3				10101	Yes	10313-B	
VS-100-2146	Note 3					Yes	10313-B	
VS-100-2147						Yes	10313-B	
VS-100-2148	Notes 3, 7, 8					Yes	10313-B	
VS-100-2149					10103	Yes	10313-B	
VS-100-2150	Note 3					Yes	10313-B	
VS-100-2151	Note 3					Yes	10313-B	
VS-100-2152	Notes 5, 9, 10, 11					Yes	10313-B	
VS-100-2153					10103	Yes	10313-B	
VS-100-2154	Note 3					Yes	10313-B	
VS-100-2155	Note 5			72"		Yes	10313-B	
VS-100-2156	Notes 1, 2, 6	10052-A				Yes	10313-B	
VS-100-2157	Notes 1, 3, 5, 12	10057				Yes	10313-B	
VS-100-2158	Notes 3, 5, 8					Yes	10313-B	
VS-100-2159						Yes	10313-B	
VS-100-2160	Note 2					Yes	10313-B	
VS-100-2161	Note 2					Yes	10313-B	
VS-100-2162						Yes	10313-B	
VS-100-2163				72"	10127	Yes	10313-B	
VS-100-2164	Notes 5, 9, 10, 11				10103	Yes	10313-B	
VS-100-2165	Notes 3 & 5					Yes	10313-B	
VS-100-2166	Notes 3 & 5				10104	Yes	10313-B	
VS-100-2167	Note 1	10052						4500
VS-100-2168	Note 1	10052				Yes	10313-B	4500
VS-100-2169	Notes 4 & 5	10050-A				Yes	10313-B	
VS-100-2170	Note 3				10101	Yes	10313-B	
VS-100-2171	Notes 3 & 5				10101	Yes	10313-B	
VS-100-2172	Note 3				10110	Yes	10313-B	
VS-100-2173	Notes 1 & 12	10057			10126			
VS-100-2174	Note 3					Yes	10313-B	
VS-100-2175	Note 10				10101	Yes	10313-B	
VS-100-2176	Note 3				10130			
VS-100-2177	Note 10				10130	Yes	10313-B	
VS-100-2178	Note 4				10102			
VS-100-2179					10108			
VS-100-2180	Note 13					Yes	10313-B	
VS-100-2181	Note 2					Yes	10313-B	
VS-100-2182	Note 3				10107	Yes	10313-B	



**CLINTON**

S E R I E S
<b>VS-100-2000</b>
G E M

**MODEL  
VARIATIONS**
**SEC. II, DIV. VS-100-2000  
PARTS CATALOG**  
 Revised January, 1959  
 Supersedes May, 1958

---

**MODEL VARIATIONS OF VS-100-2000 SERIES (Cont.)**


---

ENGINE MODEL	FOOTNOTES	BASE— ENGINE	CONTROL GROUP	CONTROL CABLE LENGTH	CRANKSHAFT	STARTER— RECOIL	HOUSING ASSEMBLY— BLOWER	MUFFLER OR MANIFOLD
VS-100-2183	Notes 1 & 3	10053-B			10128		10313-B	
VS-100-2184	Notes 1 & 3	10053-B			10129		10313-B	
VS-100-2185						Yes	10313-B	
VS-100-2186	Note 2							
VS-100-2187					10113	Yes	10313-B	
VS-100-2188								4500
VS-100-2189						Yes	10313-B	
VS-100-2190	Note 2					Yes	10313-B	
VS-100-2191						Yes	10313-B	6342
VS-100-2500	No Variation—Use Basic Parts List							

NOTE 1—Plugs #5649 and #5655 Used.

NOTE 2—Clamp #3851 and #5806-A Screw &amp; L'Washer used.

NOTE 3—#14059 Carburetor, #10348-A Shroud Assembly, #10087-A Slide Assembly, #5723-B Wire Assembly, #10334 Insulator, #5566 Grommet, #5644 Screw used.

NOTE 4—#4558 Protector Used.

NOTE 5—Use #6342 Muffler.

NOTE 6—Use #5711-A Flywheel.

NOTE 7—Use #21054 Breather Tube.

NOTE 8—Use #2000-A Air Cleaner.

NOTE 9—Use #10362-A Wire Assembly, #14290 Grommet, #5647 Screw, #10364 Clip, Ignition Shorting.

NOTE 10—Use #14059 Carburetor, #10342-B Slide Assembly.

NOTE 11—Use #10320 Knob and #5444-A Screw and L'Washer.

NOTE 12—Refer Below Deck Electric Starter, Sec. III, Div. N.

NOTE 13—Use #P5567-A Wire Assembly, #P5566 Grommet, #5644 Screw, #10366 Grommet.

