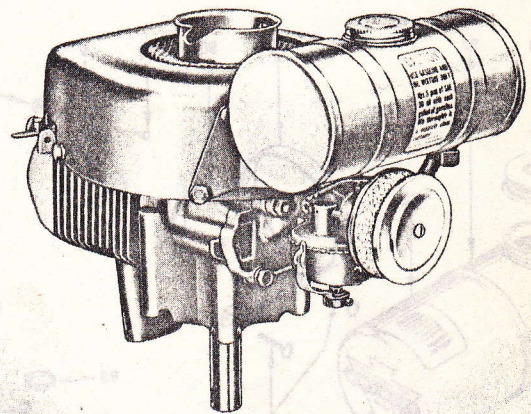
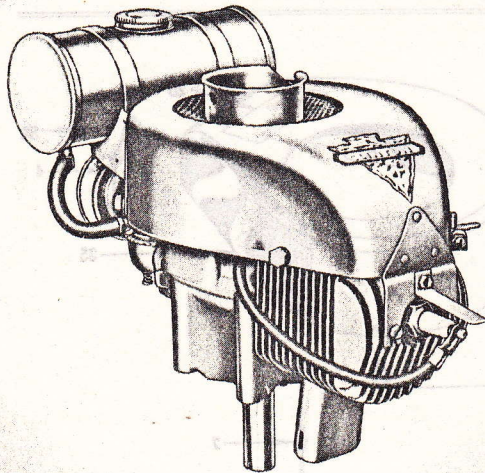


**VS-200-1000**  
**VS-200-2000**  
**PANTHER**



A Wide Range of Models are Made By

**CLINTON**

For Farm, Home and Industrial Use.

**ENGINES**

VS-200-1000

VS-200-2000

	H.P.	R.P.M.
VS-200-1000	1.2	2200
VS-200-2000	1.6	2800
	2.0	3800

## GENERAL SPECIFICATIONS

Model	Type	Description	Starter	Weight
VS-200-1000, VS-200-2000	Air Cooled	Vertical Shaft	Rope or Recoil	15 $\frac{3}{4}$

**TYPE:** Single cylinder, vertical shaft, air-cooled.

**AIR-COOLED:** Powerful flywheel blower forces strong air blast through deep cooling fins on cylinder and cylinder head to maintain correct operating temperature.

**BORE:** 1 $\frac{7}{8}$ ".

**STROKE:** 1 $\frac{5}{8}$ ".

**PISTON DISPLACEMENT:** 4.5 cubic inches.

**IGNITION:** Patented high tension, built-in flywheel magneto, moisture and dust proof, covered points.

**SPARK PLUG:** 14 mm.

**LUBRICATION:** Lubricating oil carried in fuel to all moving parts.

**CARBURETOR:** Full float feed with idle and high speed adjustment.

**GOVERNOR:** Adjustable, air-velocity type completely enclosed and statically balanced.

**MAIN BEARINGS:** Bronze.

**CRANKSHAFT:** Ductile iron, has counterweights integral with shaft. Bearing surfaces superfinished.

**CONNECTING ROD:** I-beam aluminum alloy, with bronze insert crank pin and wrist pin.

**PISTON:** Aluminum alloy, Clinton-engineered for efficient combustion.

**PISTON RINGS:** Two compression rings, pinned to prevent rotation.

**CYLINDER AND CRANKCASE:** One-piece die cast cylinder block and crankcase with large amount of cooling area for cool operation. A close-grained cast iron liner is die cast in block.

**CYLINDER HEAD:** Integral with cylinder casting.

**AIR CLEANER:** Metallic mesh type.

**FUEL TANK:** One-quart capacity.

**DIRECTION OF ROTATION:** Counter-clockwise, viewed from power take-off shaft side.

**FINISH:** Red heat-resisting enamel. Other colors upon special order.

### STANDARD EQUIPMENT

Standard equipment includes: Cast iron cylinder liner, replaceable bearing, air cleaner, specially designed dust and moisture-proof high voltage flywheel magneto, fuel tank, splash-proof gas tank cap, muffler, blower housing screen, rope starter. Safety stop device.

### SPECIAL EQUIPMENT

Special equipment includes: Remote throttle cable and controls, recoil starter, shorting terminal for remote stop hookup, 8-inch circle mounting adapter plate, electric starter, deluxe muffler, special paint finishes, resistor spark plug, special crankshaft extensions.



WORLD'S LARGEST MANUFACTURER OF A COMPLETE LINE OF AIR-COOLED GASOLINE ENGINES

**CLINTON ENGINES PROVIDE POWER**

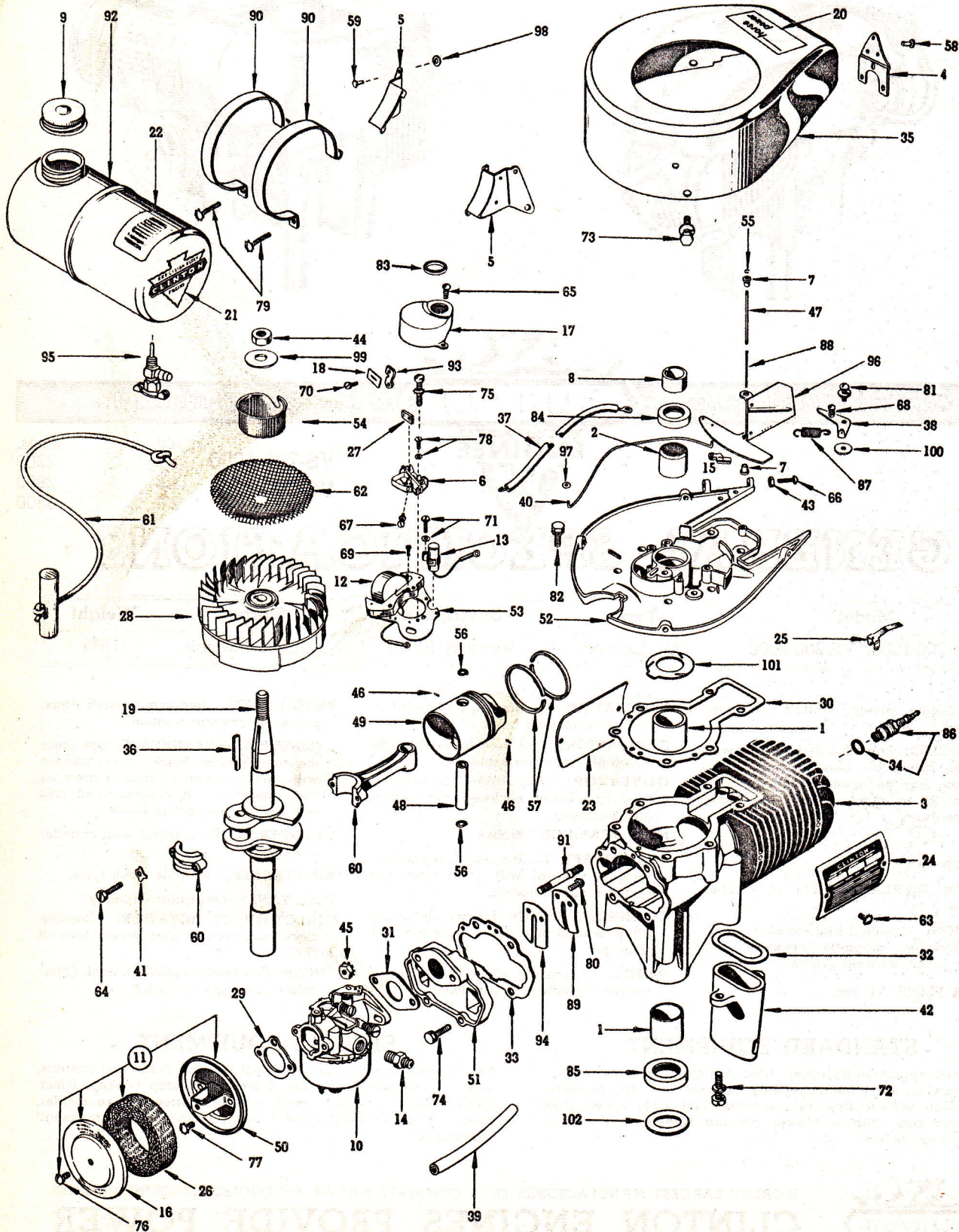
FOR FARM • HOME • INDUSTRIAL EQUIPMENT

PRINTED IN U.S.A.

# CLINTON

S E R I E S  
**VS-200-1000**  
**VS-200-2000**  
P A N T H E R

BASIC  
TYPE



# CLINTON

**S E R I E S**  
**VS-200-1000**  
**VS-200-2000**  
**P A N T H E R**

**BASIC  
TYPE**

SEC. II, DIV. VS-200-1000  
SEC. II, DIV. VS-200-2000  
PARTS CATALOG  
Revised April, 1958  
Supersedes October, 1956

There are five Basic Types of the VS-200-1000 and two Basic Types of the VS-200-2000 Engines covered by this Basic Parts List. Parts not used on all types are noted. The VS-200-1000 series are shown as follows: Serial Number Suffix "A"—referred to as Type A; Serial Number Suffix "B"—referred to as Type B; Serial Number Suffix "C"—referred to as Type C; Serial Number Suffix "D"—referred to as Type D; Serial Number Suffix "E"—referred to as Type E. The VS-200-2000 is referred to as Type 2000-A; Serial Number Suffix B—referred to as Type 2000-B.

MODEL VARIATIONS follow this Basic Parts List.

NOTE: See page "a" on "How to Identify Your Clinton Engine."

## BASIC PARTS LIST

Ref. No.	PART DESCRIPTION	Part No.	Quantity
1	BEARING — Main Sleeve (Block Assembly, Cylinder)—Used on 1000 Series (All Types).....	2058	2
	BEARING — Main Sleeve (Block Assembly)—Used on 2000-A and B.....	9016	1
2	BEARING — Sleeve (Bearing Plate).....	2059	1
3	BLOCK ASSEMBLY — Cylinder (includes Ref. No. 1)—Used on 1000 Series (All Types).....	2020-A	1
	BLOCK ASSEMBLY — Cylinder (includes Ref. No. 1)—Used on 2000-A.....	2276	1
	BLOCK ASSEMBLY — Cylinder (includes Ref. No. 1)—Used on 2000-B.....	2278	1
4	BRACE — Blower Housing.....	2127	1
5	BRACKET — Fuel Tank (Left Hand).....	2133	1
	BRACKET — Fuel Tank (Right Hand).....	2134	1
6	BREAKER POINTS ASSEMBLY (includes Ref. Nos. 27, 67 and 78).....	P5543	1
7	BUSHING — Air Vane.....	7239	2
8	CAM — Breaker Points.....	P5594	1
9	CAP AND GASKET ASSEMBLY — Fuel.....	4517-A	1
10	CARBURETOR ASSEMBLY (Clinton)—Used on Type B, C and 2000-A and B.....	14001	1
	CARBURETOR ASSEMBLY — Used on VS-200-2000, Type B.....	14027	1
	CARBURETOR ASSEMBLY — Used on Type A and D.....	C2478-1	1
	CARBURETOR ASSEMBLY — Used on Type E.....	C14089	1
	For complete identification of carburetors, refer to Section III, Div. A, page 2.		
11	CLEANER ASSEMBLY — Air.....	2000-A	1
12	COIL — Magneto (without laminations).....	P5593-A	1
13	CONDENSER — Magneto.....	P5589-A	1
14	CONNECTOR — Fuel Line (Flexible).....	5053	1
15	CONNECTOR — Governor Link to Air Vane.....	2226	1
16	COVER — Air Cleaner.....	2003	1
17	COVER — Breaker Points (with gasket).....	P5595-A	1
18	COVER — Breaker Points Terminal (Used on 2000 Series).....	5714	1
19	CRANKSHAFT — Used on 1000 Series (All Types).....	2041	1
	CRANKSHAFT — Used on 2000 Series (All Types).....	2370	1
20	DECAL — Horsepower.....	3455	1
21	DECAL — Arrowhead.....	3579	1
22	DECAL — Instruction, Fuel Mixture.....	2098	1
23	DEFLECTOR — Air Cylinder—Used on 1000 Series (All Types).....	2037	1
24	DEFLECTOR AND NAMEPLATE ASSEMBLY—Used on VS-200-2000-A.....	2106	1
	NAME PLATE — Used on 2000-B.....	2363	1
25	DEVISE — Ignition Shorting.....	3499	1
26	ELEMENT — Air Cleaner.....	2132	1
27	FELT — Lubrication, Cam Follower.....	P5504	1
28	FLYWHEEL ASSEMBLY.....	5597-A	1
29	GASKET — Air Cleaner.....	2075	1
30	GASKET — Bearing Plate (Standard, .030 thick).....	2039	1
	NOTE: Gaskets are also available in the following thicknesses: .025 and .035. Order by Part Number and specify thickness.		
31	GASKET — Carburetor to Reed Plate.....	2096	1
32	GASKET — Muffler to Block.....	2069	1

**CLINTON**

S E R I E S  
**VS-200-1000**  
**VS-200-2000**  
 P A N T H E R

**BASIC  
 TYPE**

**BASIC PARTS LIST (Continued)**

Ref. No.	PART DESCRIPTION	Part No.	Quantity
33	GASKET — Reed Plate to Block	2344	1
34	GASKET — Spark Plug	3115	1
	GASKET KIT — Engine Overhaul	2203	1
	NOTE: Kit contains all necessary Gaskets and Oil Seals.		
35	HOUSING — Blower and Bracket Assembly	2139-A	1
	NOTE: Housing Assembly includes Ref. Nos. 4 and 58.		
36	KEY — Flywheel	10339	1
37	LEAD — High Tension Magneto	P2055	1
38	LEVER AND SCREW ASSEMBLY — Throttle Control	2043-B	1
39	LINE — Fuel (Flexible)	6316	1
40	LINK — Air Governor	2335	1
41	LOCK — Connecting Rod Cap	2027	2
42	MUFFLER	2082	1
43	NUT — Hexagon, 8-32 (Speed Control Adjusting)	5522	1
44	NUT — Hexagon, 7/16-20 (Starter Pulley)	3250	1
45	NUT & LOCKWASHER ASSEMBLY — Hexagon, 1/4-28 (Carburetor to Reed Plate)	3255-A	2
46	PIN — Drive (Ring Retainer)	2099	2
47	PIN — Pivot, Air Vane—Used on Types A and B	2047	1
	PIN — Pivot, Air Vane—Used on Types C, D, E and 2000, Type A and B	7238	1
48	PIN — Wrist	2028	1
49	PISTON — Standard	2030	1
	PISTON ASSEMBLY — Standard	2030-D	1
	NOTE: Piston and Piston Assemblies are available in the following oversizes: .005, .010 and .020. Order by Part Number and specify oversize.		
	NOTE: Piston Assembly includes Ref. Nos. 48, 49, 56 and 57.		
50	PLATE — Air Cleaner Mounting	2001-B	1
51	PLATE — Reed Valve Assembly	2033-A	1
52	PLATE — Bearing	2312-A	1
	NOTE: Bearing Plate includes Ref. Nos. 2 and 84.		
53	PLATE ASSEMBLY — Magneto with Coil and Lamination (includes Ref. Nos. 12 and 75)	P5590-B	1
54	PULLEY — Starter	3299	1
55	RETAINER — Air Vane	4430	1
56	RETAINER — Wrist Pin	2029	1
57	RING — Piston, Standard	2056	2
	RING SET — Piston, Standard	2200	1
	NOTE: Ring Sets are also available in the following oversizes: .005, .010, .020. Order by Part Number and specify oversize.		
58	RIVET — Tubular (Bracket to Housing)	5460	3
59	RIVET — Tubular (Bracket to Blower Housing)	3619	2
60	ROD ASSEMBLY — Connecting	2022-D	1
61	ROPE ASSEMBLY — Starting	4266	1
62	SCREEN — Revolving	7187	1
63	SCREW — H.H. Slotted S.T., 8-32 x 3/8 (Deflector to Block)	5644	4
64	SCREW — H.H. Slotted, 10-24 x 3/4 (Connecting Rod Cap)	5429	2
65	SCREW — R.H.S.T., 6-32 x 3/8 (Breaker Cover to Bearing Plate)	5405	2
66	SCREW — R.H.M., 8-32 x 7/8 (Speed Control Adjusting)	3240	1
67	SCREW — R.H.M., 6-32 x 1/4 (Breaker Points Terminal)	5664	1
68	SCREW — H.H.M., 8-32 x 1/4 (Throttle Lever)	5681	1
69	SCREW — P.H.S.T., 4-40 x 1/4 (Coil to Laminations)	5641	1
70	SCREW — R.H.M., 6-32 x 1/4 (Screw Wires to Terminal)—Used on 2000 Series	7143	1
71	SCREW & L'WASHER ASSY. — F.H.M., 8-32 x 3/8 (Condenser to Bearing Plate)	5674-F	1
72	SCREW & L'WASHER ASSY. — F.H.M., 1/4-20 x 7/8 (Muffler to Block)	5679-G	2

**CLINTON**

S	E	R	I	E	S
<b>VS-200-1000</b>					
<b>VS-200-2000</b>					
<b>PANTHER</b>					

**BASIC  
TYPE**

SEC. II, DIV. VS-200-1000  
 SEC. II, DIV. VS-200-2000  
**PARTS CATALOG**  
 Revised April, 1958  
 Supersedes October, 1956

**BASIC PARTS LIST (Continued)**

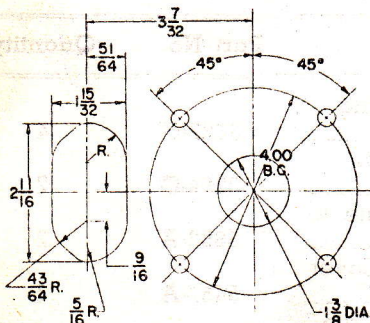
Ref. No.	PART DESCRIPTION	Part No.	Quantity
73	SCREW & L'WASHER ASSY. — H.H.C., ¼-20 x 5/8 (Blower Housing to Plate)	3632-G	4
74	SCREW & L'WASHER ASSY. — H.H.C., ¼-20 x 7/8 (Reed Plate to Block)	3294-G	2
75	SCREW & L'WASHER ASSY. — P.H.S.T., 10-24 x 1 (Magneto Plate to Bearing Plate)	5682-A	2
76	SCREW & L'WASHER ASSY. — B.H.M., 8-32 x 3/8 (Air Cleaner Cover to Mounting Plate)	5457-A	1
77	SCREW & L'WASHER ASSY. — H.H.C., 8-32 x 7/16 (Mounting Plate to Carburetor)	5673-A	2
78	SCREW & L'WASHER ASSY. — R.H.M., 8-32 x 1/3 (Breaker Points to Bearing Plate)	5409-F	1
79	SCREW & L'WASHER ASSY. — R.H.M., 10-24 x 1 (Fuel Tank Straps)	5421-A	2
80	SCREW & L'WASHER ASSY. — H.H.C., 8-32 x 3/8 (Reed Assembly to Reed Plate)	5644-A	2
81	SCREW & L'WASHER ASSY. — R.H.S.T., 8-32 x 1/2 (1—Speed Control Lever, 3—Ignition Shorting Clip)	5443-D	4
82	SCREW & L'WASHER ASSY. — H.H.C., ¼-20 x 3/4 (Bearing Plate to Block)	5446-F	6
83	SEAL — Breaker Points Cover—Used on 2000 Series	5596	1
84	SEAL — Oil (Bearing Plate)	7254	1
85	SEAL — Oil (Power Take-Off)	4429	1
86	SPARK PLUG & GASKET ASSEMBLY	K2168-A	1
87	SPRING — Air Governor	2448	1
88	SPRING — Compression (Air Vane)—Used on Types A and B	2400	1
	SPRING — Compression (Air Vane)—Used on Types C, D, E and 2000-A and B	10005	1
89	STOP — Reed Valve	2036	1
90	STRAP — Fuel Tank	2135	2
91	STUD — Carburetor Mounting	2063	2
92	TANK ASSEMBLY — Fuel (includes Ref. No. 9)	7461-A	1
93	TERMINAL — Breaker Points—Used on 2000 Series	5713	1
94	VALVE — Reed	2035	1
95	VALVE — Fuel Shut-Off—Used on Types A and B	5051	1
	CONNECTOR — Fuel Line—Used on Types C, D and E and 2000-A and B	5055	1
96	VANE & LEVER ASSY. — Air Governor—Used on Types A and B	2045-A	1
	VANE & LEVER ASSY. — Used on Types C, D, E and 2000-A and B	2323	1
97	WASHER — Air Governor Link	2049	1
98	WASHER — Flat (Bracket to Housing)	3279	2
99	WASHER — Spring Tension (Starter Pulley)	4119	1
100	WASHER — Spring Tension (Throttle Control)	2077	1
101	WASHER — Thrust, Bronze (Crankshaft)—Used on 1000 Series (All Types)	2064	1
	WASHER — Thrust (Crankshaft)—Used on 2000-A and B	2026	1
102	WASHER — Oil Seal Protector	4558	1

**AVAILABLE OVERHAUL KITS**

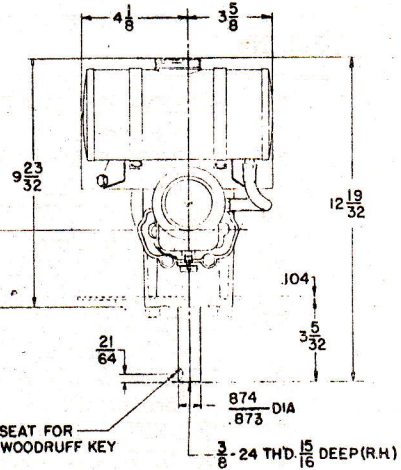
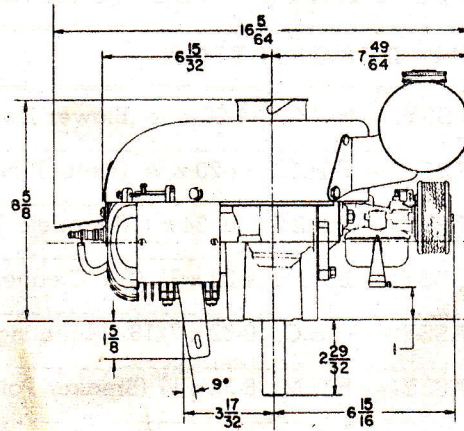
Engine Model	Description	Kit No.
VS-200-1000	Gasket Overhaul Kit	2203
VS-200-2000	Gasket Overhaul Kit	2203

# DIMENSIONAL SPECIFICATIONS AND POWER DATA

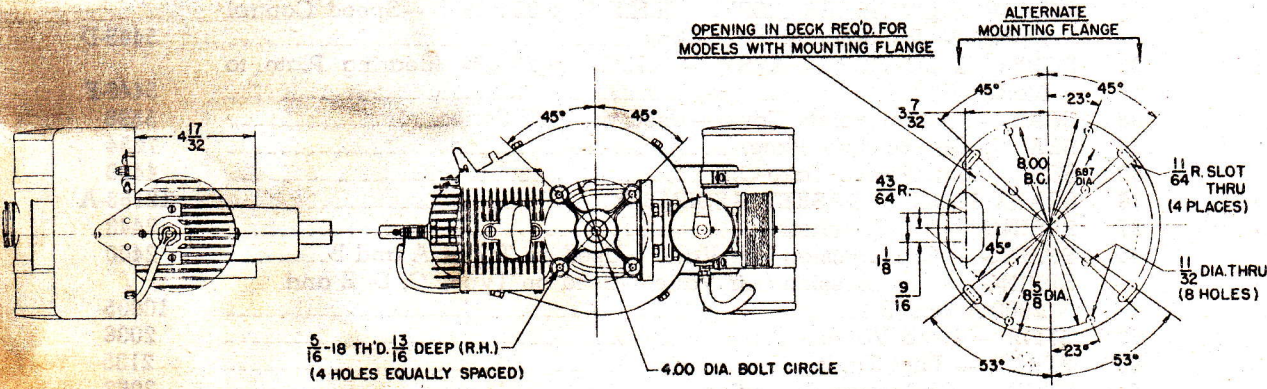
Detailed prints and engineering counsel are available. Specifications and Dimensions are subject to change without notice.



ENLARGED  
DETAIL OF CUTOUTS IN MOUNTING  
FLANGE TO CLEAR ENGINE AND MUFFLER



KEYSEAT FOR  
NO. 505 WOODRUFF KEY



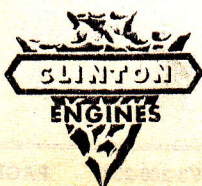
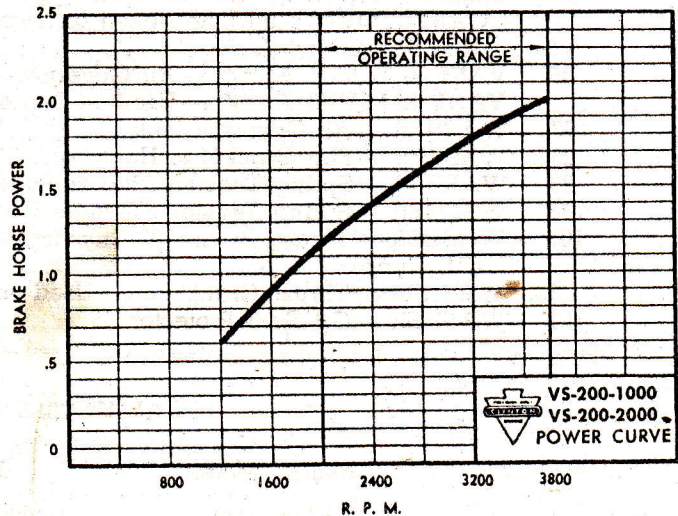
## POWER DATA

The performance and power analysis figures for the Clinton Engine series show the rated Brake Horse Power developed from test-run engines. The standard engine equipped with standard air cleaner and muffler was used, in every case, for these tests and the figures have been corrected for barometer at sea level and temperature of 60° F. Production engines when shipped will develop not less than 85% of rated B.H.P.

Production engines, after run-in to reduce friction will develop not less than 95% of the rated B.H.P.

Engine power will decrease 3% for each 1,000 feet above sea level, and 1% for each 10° F. above standard temperature of 60° F.

Unless otherwise specified, governors are set to operate at 3,400 R.P.M. without load. Complete details of installations requiring continuous operation at other than recommended speeds should be referred to the factory for approval.



ENGINE DIVISION OF **CLINTON ENGINES CORPORATION**

MAQUOKETA, IOWA

FORMERLY: CLINTON MACHINE CO.

CABLE ADDRESS: ENGINES U. S. A.

**CLINTON**

S	E	R	I	E	S	
<b>VS-200-1000</b>						
<b>VS-200-2000</b>						
P	A	N	T	H	E	R

**MODEL  
VARIATIONS**

SEC. II, DIV. VS-200-1000  
VS-200-2000  
**PARTS CATALOG**  
Revised January, 1959  
Supersedes March, 1958

**MODEL VARIATIONS OF VS-200-1000—VS-200-2000 SERIES**

The adaptation of Clinton Engines to a wide variety of uses results in what is known as "Model Variations." Following is the complete list of all Models produced up to issue date (shown above). Opposite each Engine Model listed are the Part Numbers and/or Assembly Numbers for the Series used IN ADDITION TO or IN PLACE OF the parts illustrated and shown on the Basic Parts List preceding this Model Variations List. Refer to other sections of this Manual when Assembly Numbers are given to find the Parts List for these assemblies.

See page (a) on "How to Identify Your Clinton Engine." Use the preceding Basic Parts List except as shown below.

ENGINE MODEL — See page (a), "How to Identify Your Clinton Engine."	FOOTNOTES (Check page 4).	CONTROL GROUP (Control Group Illustration Numbers Shown). Refer to Sec. III, Div. D for Parts List.	CONTROL CABLE LENGTH — Replacement cable is furnished in 72" length ONLY, cut to length shown.	CRANKSHAFT (Part Numbers Shown). Refer to Sec. IV, Div. B for details and further information.	PLATE ASSEMBLY — BEARING (Part Numbers Shown). Refer to Illustrated Basic Parts List for corresponding part.	BLOCK ASSEMBLY — CYLINDER (Part Numbers Shown). Refer to Illustrated Basic Parts List for corresponding part.	STARTER—RECOLL. Refer to Sec. III, Div. H for Parts List.	HOUSING ASSEMBLY — BLOWER (Part Numbers Shown). Refer to Basic Parts List for corresponding part.
VS-200-1104			72"					
VS-200-1106	Note 2							
VS-200-1107	Note 2						Yes	2140-A
VS-200-1115	Note 1				2314-A			
VS-200-1117				2147		2018-A		
VS-200-1119	No Variation—Use Basic Parts List							
VS-200-1125	Note 2		72"					
VS-200-1126				2143		2019-A		
VS-200-1127	No Variation—Use Basic Parts List							
VS-200-1128							Yes	2140-A
VS-200-1129				2148				
VS-200-1136	Note 2							
VS-200-1140							Yes	2140-A
VS-200-1152			72"				Yes	2140-A
VS-200-1160							Yes	2140-A
VS-200-1162	No Variation—Use Basic Parts List							
VS-200-1163	Notes 3 & 4			2291				
VS-200-1165	Note 3							
VS-200-1166							Yes	2140-A
VS-200-1167				2293				
VS-200-1168	Notes 1, 4, 5			2293	2314-A		Yes	2140-A
VS-200-1169	Notes 1, 4, 5			2293	2314-A		Yes	2140-A
VS-200-1170	Note 2							
VS-200-1171	Note 2						Yes	2140-A
VS-200-1172								2140-A
VS-200-1173	No Variation—Use Basic Parts List							
VS-200-1174							Yes	2140-A
VS-200-1175	Notes 1 & 3			2293			Yes	2140-A
VS-200-1176	Notes 1 & 3			2293			Yes	2140-A
VS-200-1177	No Variation—Use Basic Parts List							
VS-200-1178				2147		2018-A	Yes	2140-A
VS-200-1179	Note 5							

**CLINTON**

**S E R I E S**  
**VS-200-1000**  
**VS-200-2000**  
**P A N T H E R**

**MODEL  
 VARIATIONS**

**MODEL VARIATIONS OF VS-200-1000—VS-200-2000 SERIES (Cont.)**

ENGINE MODEL	FOOTNOTES	CONTROL GROUP	CONTROL CABLE LENGTH	CRANKSHAFT	PLATE ASSEMBLY—BEARING	BLOCK ASSEMBLY—CYLINDER	STARTER—RECOIL	HOUSING ASSEMBLY—BLOWER
VS-200-1180	Notes 2 & 3			2295		2275-A	Yes	2140-A
VS-200-1181	No Variation—Use Basic Parts List							
VS-200-1182	No Variation—Use Basic Parts List							
VS-200-1183	No Variation—Use Basic Parts List							
VS-200-1184				2291				
VS-200-1185	No Variation—Use Basic Parts List							
VS-200-1186							Yes	2140-A
VS-200-1187							Yes	2140-A
VS-200-1188							Yes	2140-A
VS-200-1189	No Variation—Use Basic Parts List							
VS-200-1190	Note 4						Yes	2140-A
VS-200-1191							Yes	2140-A
VS-200-1192	Note 2						Yes	2140-A
VS-200-1193				2148			Yes	2140-A
VS-200-1194			72"				Yes	2140-A
VS-200-1195							Yes	2140-A
VS-200-1196	Note 2						Yes	2140-A
VS-200-1197							Yes	2140-A
VS-200-1198	No Variation—Use Basic Parts List							
VS-200-1199				2291			Yes	2140-A
VS-200-1203	Notes 5 & 6							
VS-200-2106	Note 7							
VS-200-2117				2371				
VS-200-2125	Note 7	3855-56	72"					
VS-200-2127	No Variation—Use Basic Parts List							
VS-200-2129				2374				
VS-200-2136	Note 7							
VS-200-2149	Notes 3, 7, 11							
VS-200-2164				2372				
VS-200-2167				2373				
VS-200-2172								2140
VS-200-2178				2371			Yes	2140-A
VS-200-2179	Note 5							
VS-200-2185	No Variation—Use Basic Parts List							
VS-200-2187							Yes	2140-A
VS-200-2188							Yes	2140-A
VS-200-2195							Yes	2140-A
VS-200-2196	Note 7						Yes	2140-A
VS-200-2197							Yes	2140-A
VS-200-2198	No Variation—Use Basic Parts List							
VS-200-2199				2375			Yes	2140-A
VS-200-2201	No Variation—Use Basic Parts List							
VS-200-2202	No Variation—Use Basic Parts List							
VS-200-2204				2375				
VS-200-2205	No Variation—Use Basic Parts List							



**CLINTON**

S	E	R	I	E	S	
<b>VS-200-1000</b>						
<b>VS-200-2000</b>						
P	A	N	T	H	E	R

**MODEL  
VARIATIONS**

SEC. II, DIV. VS-200-1000  
VS-200-2000  
PARTS CATALOG  
Revised January, 1959  
Supersedes March, 1958

**MODEL VARIATIONS OF VS-200-1000—VS-200-2000 SERIES (Cont.)**

ENGINE MODEL	FOOTNOTES	CONTROL GROUP	CONTROL CABLE LENGTH	CRANKSHAFT	PLATE ASSEMBLY— BEARING	BLOCK ASSEMBLY— CYLINDER	STARTER— RECOIL	HOUSING ASSEMBLY— BLOWER
VS-200-2206	Note 7							
VS-200-2207				2377				
VS-200-2208	No Variation—Use Basic Parts List							
VS-200-2209	Note 7							
VS-200-2210	Note 7							
VS-200-2211				2375			Yes	2140-A
VS-200-2212	No Variation—Use Basic Parts List							
VS-200-2213	Note 7							
VS-200-2214	Note 7						Yes	2140-A
VS-200-2215	Note 7						Yes	2140-A
VS-200-2216				2375			Yes	2140-A
VS-200-2217	Note 7						Yes	2140-A
VS-200-2218	Note 7			2378				
VS-200-2219							Yes	2140-A
VS-200-2220	Notes 5 & 7							
VS-200-2221	Note 7						Yes	2140-A
VS-200-2222	Note 7						Yes	2140-A
VS-200-2223	No Variation—Use Basic Parts List							
VS-200-2224	Note 8							
VS-200-2225							Yes	2140-A
VS-200-2226	Note 7		72"				Yes	2140-A
VS-200-2227				2374				
VS-200-2228				2374			Yes	2330-B
VS-200-2229	Note 7			2376				
VS-200-2230	Note 7							
VS-200-2231	Notes 5 & 9		72"				Yes	2140-A
VS-200-2232	Note 10		72"				Yes	2140-A
VS-200-2233	Note 7							
VS-200-2234							Yes	2140-A
VS-200-2235	Note 7						Yes	2140-A
VS-200-2236	Note 7							
VS-200-2237	Note 7							2140-A
VS-200-2238				2377				
VS-200-2239	No Variation—Use Basic Parts List							
VS-200-2240							Yes	2140-A
VS-200-2241	Notes 3, 7, 11						Yes	2140-A
VS-200-2242	Note 7						Yes	2140-A
VS-200-2243	Note 7							
VS-200-2244	Note 7							
VS-200-2245	Note 7						Yes	2140-A
VS-200-2246	Note 7							
VS-200-2247				2371				
VS-200-2248				2371			Yes	2140-A
VS-200-2249	Note 7						Yes	2140-A
VS-200-2250	No Variation—Use Basic Parts List							

**CLINTON**

**S E R I E S**  
**VS-200-1000**  
**VS-200-2000**  
**P A N T H E R**

**MODEL  
 VARIATIONS**

**MODEL VARIATIONS OF VS-200-1000—VS-200-2000 SERIES (Cont.)**

ENGINE MODEL	FOOTNOTES	CONTROL GROUP	CONTROL CABLE LENGTH	CRANKSHAFT	PLATE ASSEMBLY—BEARING	BLOCK ASSEMBLY—CYLINDER	STARTER—RECOIL	HOUSING ASSEMBLY—BLOWER
VS-200-2251				2380				
VS-200-2252				2380			Yes	2140-A
VS-200-2253	No Variation—Use Basic Parts List							
VS-200-2254				2371			Yes	2140-A
VS-200-2255	Note 7							
VS-200-2256	Note 7						Yes	2140-A
VS-200-2257	No Variation—Use Basic Parts List							
VS-200-2258	Notes 4, 11, 12, 14						Yes	2140-A
VS-200-2259	Note 7							
VS-200-2260	Note 7						Yes	2140-A
VS-200-2261	Note 7						Yes	2140-A
VS-200-2262	Note 7							
VS-200-2263	Note 7						Yes	2140-A
VS-200-2264	Notes 7 & 12						Yes	2140-A
VS-200-2265	Note 7						Yes	2140-A
VS-200-2266				2371			Yes	2140-A
VS-200-2267	Notes 3, 11, 13					2279		
VS-200-2268	Notes 3 & 7							
VS-200-2269	Note 9			2382			Yes	2405-B
VS-200-2270	Notes 2 & 12						Yes	2140-A
VS-200-2271	Notes 3 & 9			2375				
VS-200-2272	Notes 2 & 3							
VS-200-2273	Note 2						Yes	2140-A
VS-200-2500	No Variation—Use Basic Parts List							

- NOTE 1—This Engine uses a shut-off switch and the following additional parts are necessary: #3239 Screw; #3288 Washer; #5527 Washer, Shoulder, Fiber; #5528 Washer, Fiber; #3478 Terminal; #5524 Nut; #5526-D Terminal Wire Ass'y.
- NOTE 2—Use #2131 Base, Engine; four (4) #3217-G Screw & L'Washer Ass'y. See Sec. IV, Div. A.
- NOTE 3—This model uses #2220-A Muffler Assembly consisting of the following additional parts: #2220 Muffler Body; #2222 Baffle; two (2) #2223 Spacer; #2221 Cover; #2225 Gasket; #2224 Plate, Inspection; two (2) #5612-A Screw & L'Washer Assembly; two (2) #5409-A Screw & L'Washer Assembly.
- NOTE 4—Two (2) #5659 Stud-Muffler Mounting; and two (2) #3265 Nut used as additional parts.
- NOTE 5—Muffler #2350-B used on this model.
- NOTE 6—Use #4557 Air Cleaner; #3991-1 Horn, Air; #3990 Gasket; two (2) #5677 Screw; and #7044 Nut, Wing in lieu of #2000-A Air Cleaner and #2075 Gasket.
- NOTE 7—Use #2431 Flange and #3217-G Screw & L'Washer Ass'y.
- NOTE 8—Use #7197 Screen and #7198 Pulley.
- NOTE 9—Use #C-3410 Clamp, #5644 Screw (2) as additional parts.
- NOTE 10—Use #2314-A Bearing Plate Assembly, #P-5566 Grommet, #5708-A Shorting Wire, #5644 Screw.
- NOTE 11—Use #C-3410 Clamp and #5644 Screw.
- NOTE 12—Use #5542-A Wire Assembly and #7466 Switch Assembly.
- NOTE 13—Below-Deck Starter — Refer to Sec. III, Div. N.
- NOTE 14—This model uses #2350-E Muffler.