

A Wide Range of Models are Made By

CLINTON

For Farm, Home and Industrial Use.

| | | |
|--------------|-----------|--------|
| | H.P. | R.P.M. |
| VS-2100-1000 | 1.1----- | 2200 |
| | 1.5----- | 2800 |
| | 1.75----- | 3600 |

GENERAL SPECIFICATIONS

| Model | Type | Description | Starter | Weight |
|--------------|------------|----------------|----------------|---------|
| VS-2100-1000 | Air Cooled | Vertical Shaft | Rope or Recoil | 19 lbs. |

BORE: 2 $\frac{3}{8}$ "**STROKE:** 1 $\frac{5}{8}$ "**TYPE:** Single cylinder, L-Head, air-cooled.**AIR-COOLED:** Large capacity, curved vane blower cast integral with fly-wheel. Air passes through deep fins to maintain correct operating temperature.**PISTON DISPLACEMENT:** 7.2 cubic in.**IGNITION:** Very high voltage, built-in fly-wheel magneto for faster starting. Moisture and dust proof with fully enclosed ignition points.**SPARK PLUG:** 14 m.m.**LUBRICATION:** Splash-type. Oil drainage permitted from either side of the base.**CARBURETOR:** Full float feed with idle and high speed adjustment.**GOVERNOR:** Adjustable, air velocity type.**MAIN BEARING:** Bronze.**CRANKSHAFT:** Arma steel, induction heat-treated. Counterweights and cam gear drive integral with shaft.**CONNECTING ROD:** I-Beam, aluminum alloy with extra large bearings.**PISTON:** Aluminum alloy. Clinton-engineered for efficient combustion.**PISTON RINGS:** Two compression and one oil control. Treated surfaces.**VALVES:** Forged steel. Exhaust valve provided with heat-resistant alloy head.**VALVE SEATS:** Alloy inserts.**VALVE TAPPETS:** Hardened and ground.**CYLINDER AND CRANKCASE** Die cast cylinder block and crankcase with large amount of cooling area for cool operation. A close-grained cast iron liner is die cast in block.**CYLINDER HEAD:** Aluminum, removable with extra deep cooling fins.**OIL FILLER:** Conveniently located for easy check of oil level and for filling.**AIR FILTER:** Dry type.**FUEL TANK:** Two-quart capacity with gasoline strainer and shut-off.**OIL RESERVOIR:** One-pint capacity.**DIRECTION OF ROTATION:** Counter-clockwise, viewed from power take-off shaft side.**FINISH:** Heat-resistant, red enamel. Other colors available upon request.

STANDARD EQUIPMENT

Standard equipment includes: Down-draft oil bath air cleaner, dust and moisture-proof, high voltage, flywheel magneto, float feed carburetor and fuel tank, muffler, blower housing screen, rope starter.

SPECIAL EQUIPMENT

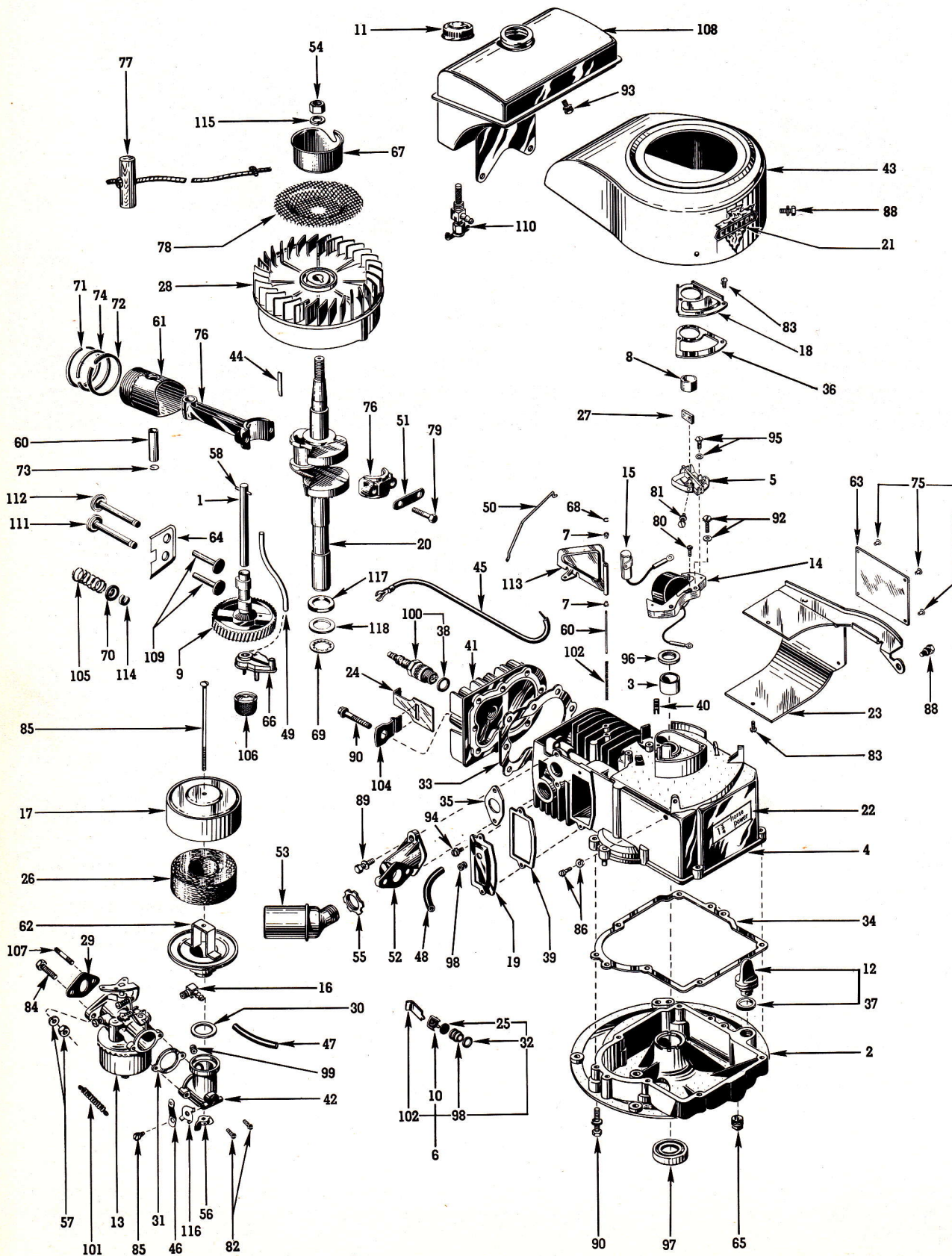
Special equipment includes: Remote governor controls, throttle control cables and stop, recoil starter.



WORLD'S LARGEST MANUFACTURER OF A COMPLETE LINE OF AIR-COOLED GASOLINE ENGINES

CLINTON ENGINES PROVIDE POWER

FOR FARM • HOME • INDUSTRIAL EQUIPMENT



CLINTON

| | | | | | |
|---------------------|---|---|---|---|---|
| S | E | R | I | E | S |
| VS-2100-1000 | | | | | |
| G E M | | | | | |

**BASIC
TYPES**
**SEC. II, DIV. VS-2100-1000
PARTS CATALOG**
 Revised February, 1957
 Supersedes April, 1956

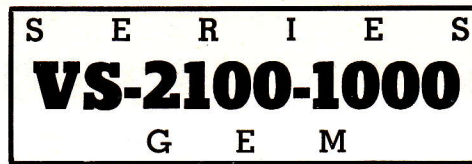
There are four Basic Types of the VS-2100-1000 Engines covered by this Basic Parts List. Parts not used on all Types are noted. These "Types" are shown as follows: Serial Number Suffix "A"—referred to as "Type A"; Serial Number Suffix "B"—referred to as "Type B"; Serial Number Suffix "C"—referred to as "Type C"; Serial Number Suffix "D"—referred to as "Type D."

NOTE: See page (a) on "How to Identify Your Clinton Engine."

BASIC PARTS LIST

| Ref. No. | PART DESCRIPTION | Part No. | Quantity |
|----------|--|----------|----------|
| 1 | AXLE ASSEMBLY — Camshaft (includes pin)----- | 10310-A | 1 |
| 2 | BASE ASSEMBLY — Engine----- | 10000-A | 1 |
| | NOTE: Base includes Ref. No. 97. | | |
| 3 | BEARING — Main (Sleeve)----- | 10380 | 1 |
| 4 | BLOCK ASSEMBLY — Cylinder----- | 10205-A | 1 |
| | NOTE: Assembly includes Ref. Nos. 3, 96. | | |
| 5 | BREAKER POINTS ASSEMBLY----- | P5543 | 1 |
| | NOTE: Assembly includes Ref. Nos. 27, 80, 81. | | |
| 6 | BREATHER ASSEMBLY----- | 6330 | 1 |
| | NOTE: Assembly includes Ref. Nos. 10, 25, 32, 98, 102. | | |
| 7 | BUSHING — Air Vane----- | 7239 | 2 |
| 8 | CAM — Magneto Breaker----- | 5707 | 1 |
| 9 | CAMSHAFT ASSEMBLY----- | 10008-A | 1 |
| 10 | CAP — Breather----- | 7151 | 1 |
| 11 | CAP & GASKET ASSEMBLY — Fuel----- | 4517-A | 1 |
| 12 | CAP & GASKET ASSEMBLY — Oil Filler----- | 5095-1 | 1 |
| 13 | CARBURETOR ASSEMBLY — Clinton—Used on Type A----- | 14008 | 1 |
| | CARBURETOR ASSEMBLY — Used on Type B----- | C14094 | 1 |
| | CARBURETOR ASSEMBLY — Used on Type C----- | C14090 | 1 |
| | CARBURETOR ASSEMBLY — Used on Type D----- | C14087 | 1 |
| | (For Complete Identification of Carburetors, Refer to Sec. III, Div. A, Page 2) | | |
| | CLEANER ASSEMBLY — Air----- | 6331 | 1 |
| | NOTE: Assembly includes Ref. Nos. 17, 26, 62. | | |
| 14 | COIL ASSEMBLY — Magneto (With Laminations)----- | P5593-B | 1 |
| | COIL — Magneto (Without Laminations)----- | P5593-A | 1 |
| 15 | CONDENSER — Magneto----- | P5599-A | 1 |
| 16 | CONNECTOR — 90°, Flexible Fuel Line (Carburetor)----- | 5052 | 1 |
| 17 | COVER — Air Cleaner----- | 21072 | 1 |
| 18 | COVER — Dust, Magneto Breaker Points----- | 10382 | 1 |
| 19 | COVER — Valve Chamber----- | 10323 | 1 |
| 20 | CRANKSHAFT----- | 10100 | 1 |
| 21 | DECAL — Arrowhead----- | 3579 | 1 |
| 22 | DECAL — Horsepower----- | 21010 | 1 |
| 23 | DEFLECTOR ASSEMBLY — Air----- | 10006-A | 1 |
| 24 | DEVICE — Shorting Clip (Spark Plug)----- | 10368 | 1 |
| 25 | DISC — Breather----- | 7152 | 1 |
| 26 | ELEMENT — Air Cleaner----- | 2132 | 1 |
| 27 | FELT — Lubrication, Cam Follower----- | P5504 | 1 |
| 28 | FLYWHEEL ASSEMBLY — With Magnets----- | 5597-A | 1 |
| 29 | GASKET — Paper (Carburetor to Manifold)----- | 7168 | 1 |
| 30 | GASKET — Air Horn to Air Cleaner----- | 10259 | 1 |
| 31 | GASKET — Air Horn to Carburetor----- | 3990 | 1 |
| 32 | GASKET — Breather----- | 7153 | 1 |
| 33 | GASKET — Cylinder Head----- | 10253 | 1 |
| 34 | GASKET — Engine Base----- | 10254 | 1 |
| 35 | GASKET — Asbestos (Manifold to Block)----- | 7149 | 1 |
| 36 | GASKET — Cover, Dust (Breaker Points)----- | 10250 | 1 |
| 37 | GASKET — Oil Filler Cap----- | 3297 | 1 |
| 38 | GASKET — Spark Plug----- | 3115 | 1 |
| 39 | GASKET — Valve Chamber Cover----- | 10251 | 1 |
| | GASKET KIT — Engine Overhaul----- | 6329 | 1 |

CLINTON



**BASIC
 TYPES**

BASIC PARTS LIST (Continued)

| Ref. No. | PART DESCRIPTION | Part No. | Quantity |
|----------|---|----------|----------|
| 40 | GROMMET — Magneto (Breaker Lead Wire) | 10367 | 1 |
| 41 | HEAD — Cylinder | 10011 | 1 |
| 42 | HORN — Air | 10350 | 1 |
| 43 | HOUSING ASSEMBLY — Blower | 21007-A | 1 |
| 44 | KEY — Flywheel | 10339 | 1 |
| 45 | LEAD — Hi-Tension, Magneto | P2055 | 1 |
| 46 | LEVER — Speed Adjusting | 4441 | 1 |
| 47 | LINE — Flexible, Fuel | 6316 | 1 |
| 48 | LINE — Flexible, Breather | 10352 | 1 |
| 49 | LINE — Oil Distributor (Oil Pump) | 10390 | 1 |
| 50 | LINK — Carburetor to Air Vane | 10020 | 1 |
| 51 | LOCK — Double, Connecting Rod Screw | 10318 | 1 |
| 52 | MANIFOLD — Carburetor | 6411 | 1 |
| 53 | MUFFLER | 3639 | 1 |
| 54 | NUT — Hex., 7/16-20 (Starter Pulley) | 3250 | 1 |
| 55 | NUT — Lock, Muffler | 4425 | 1 |
| 56 | NUT — Wing (Air Cleaner) | 7044 | 1 |
| 57 | NUT & LOCKWASHER ASSEMBLY — ¼-28 Hex. (Carb. Mtg.) | 3255-A | 2 |
| 58 | PIN — Camshaft Axle | 10392 | 1 |
| 59 | PIN — Pivot, Air Vane Governor | 7238 | 1 |
| 60 | PIN — Wrist | 6024 | 1 |
| 61 | PISTON — Standard | 10001 | 1 |
| | PISTON ASSEMBLY — Standard | 10001-A | 1 |
| | NOTE: Assembly includes Ref. Nos. 60, 61, 71, 72, 73, 74. | | |
| | NOTE: Piston Assemblies are available in the following oversizes: .005, .010, .020, .030 and .040. Order by Part Number and specify oversize. | | |
| 62 | PLATE — Air Cleaner Mounting | 21070-A | 1 |
| 63 | PLATE — Name | 6530 | 1 |
| 64 | PLATE — Valve Spring Retainer | 10013 | 1 |
| 65 | PLUG — ⅜ N.P.T. (Oil Drain) | 5627 | 1 |
| 66 | PUMP ASSEMBLY — Oil | 10385-A | 1 |
| 67 | PULLEY — Starter | 3299 | 1 |
| 68 | RETAINER — Air Vane | 4430 | 1 |
| 69 | RETAINER — Self-Locking (Power Take-Off, Dust Seal) | 7452 | 1 |
| 70 | RETAINER — Valve Spring | 3028 | 2 |
| 71 | RING — Compression, Standard | 6026 | 1 |
| 72 | RING — Oil, Standard | 6006 | 1 |
| 73 | RING — Retainer, Wrist Pin | 6034 | 2 |
| 74 | RING — Scraper, Standard | 6027 | 1 |
| | RING SET — Standard | 10023 | 1 |
| | NOTE: Ring Set includes Ref. Nos. 71, 72, 74. | | |
| | NOTE: Ring Sets are available in the following oversizes: .005, .010, .020, .030 and .040. Order by Part Number and specify oversize. | | |
| 75 | RIVET — Tubular (4—Name Plate) (2—Flywheel Shield) | 5460 | 6 |
| 76 | ROD ASSEMBLY — Connecting | 10002-A | 1 |
| | NOTE: Assembly includes Ref. Nos. 51, 79. | | |
| 77 | ROPE ASSEMBLY — Starter | 4266 | 1 |
| 78 | SCREEN — Revolving | 7187 | 1 |
| 79 | SCREW — H.H.C., ¼-28 x 1 ½ (Connecting Rod Cap) | 5635 | 2 |
| 80 | SCREW — P.H.S.T., #6-32 x ¼ (Coil to Laminations) | 5641 | 1 |
| 81 | SCREW — R.H.M., #6-32 x ½ (Breaker Points Terminal) | 5664 | 1 |
| 82 | SCREW — R.H.M., #8-32 x 11/16 (Air Horn to Carburetor) | 5677 | 2 |
| 83 | SCREW — H.H.C., #8-32 x 5/16 (2—Dust Cover) (2—Deflector to Block) | 5644 | 4 |
| 84 | SCREW — H.H.C., ¼-28 x ⅞ (Carburetor to Manifold) | 5650 | 1 |
| 85 | SCREW — Shoulder, 10-32 x 5/16 (Speed Adj. Lever) | 4440 | 1 |
| 86 | SCREW — R.H.M., #10-24 x 4 ⅜ (Air Cleaner) | 5634 | 1 |
| 87 | SCREW & L'WASHER ASS'Y—H.H.C., ¼-20 x ½ (Plug to Block) | 3205-G | 1 |

CLINTON

| | | | | | |
|---------------------|---|---|---|---|---|
| S | E | R | I | E | S |
| VS-2100-1000 | | | | | |
| G E M | | | | | |

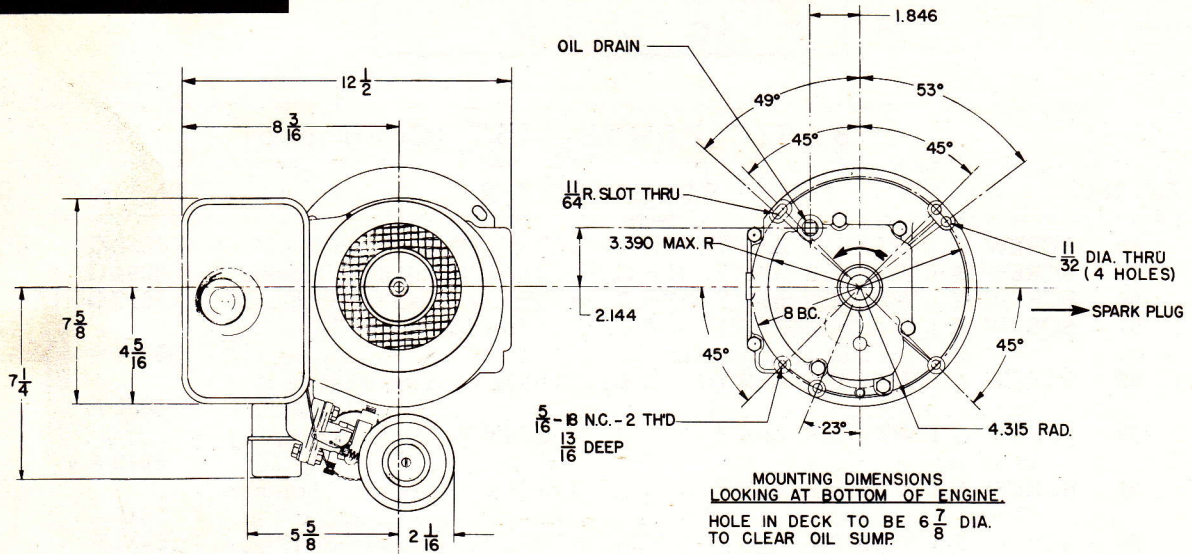
**BASIC
TYPES**
 SEC. II, DIV. VS-2100-1000
 PARTS CATALOG
 Revised February, 1957
 Supersedes April, 1956
BASIC PARTS LIST (Continued)

| Ref. No. | PART DESCRIPTION | Part No. | Quantity |
|----------|---|----------|----------|
| 88 | SCREW & L'WASHER ASS'Y—H.H.C., ¼-20 x ⅝ (Deflector to Block)--- | 3632-G | 3 |
| 89 | SCREW & L'WASHER ASS'Y—H.H.C., ¼-20 x ⅞ (Manifold to Block)--- | 3294-G | 2 |
| 90 | SCREW & L'WASHER ASS'Y—H.H.C., ¼-20 x 1¼ (Base to Block)--- | 5613-G | 7 |
| 91 | SCREW & L'WASHER ASS'Y—H.H.C., 5/16-18 x 1⅞ (2—Tank Bracket, 6—Cylinder Head)----- | 5654 | 8 |
| 92 | SCREW & L'WASHER ASS'Y—H.H.S.T., #10-24 x 1 (Laminations to Block)----- | 5682-A | 2 |
| 93 | SCREW & L'WASHER ASS'Y—R.H.M., #10-24 x ½ (Blower Housing to Tank)----- | 5643-A | 2 |
| 94 | SCREW & L'WASHER ASS'Y—H.H.C., #10-24 x ½ (Valve Chamber Cover)----- | 5645-A | 2 |
| 95 | SCREW & L'WASHER ASS'Y—R.H.M., #8-32 x ⅜ (Points to Block)--- | 5444-F | 1 |
| 96 | SEAL — Oil (Block)----- | 10012 | 1 |
| 97 | SEAL — Oil (Engine Base)----- | 4429 | 1 |
| 98 | SEAT — Breather----- | 4438 | 1 |
| 99 | SLEEVE — Connector, Breather Line----- | 10353 | 2 |
| 100 | SPARK PLUG & GASKET ASSEMBLY----- | 16303-A | 1 |
| 101 | SPRING — Air Governor----- | 10336 | 1 |
| 102 | SPRING — Breather Hold-Down----- | 10381 | 1 |
| 103 | SPRING — Compression (Air Vane)----- | 10005 | 1 |
| 104 | SPRING — Ignition Shorting Clip----- | 10369 | 1 |
| 105 | SPRING — Valve----- | 3068 | 2 |
| 106 | STRAINER — Oil Pump (Discontinued after Serial No. 3887370)----- | 10389 | 1 |
| 107 | STUD — Carburetor Mounting to Manifold----- | 6155 | 1 |
| 108 | TANK ASSEMBLY — Fuel----- | 21371-A | 1 |
| | NOTE: Assembly includes Ref. No. 11. | | |
| 109 | TAPPET — Valve----- | 10009 | 2 |
| 110 | VALVE — Fuel Shut-Off, Flexible Line----- | 5051 | 1 |
| 111 | VALVE — Exhaust----- | 10301 | 1 |
| | VALVE — Exhaust (oversize .010)----- | 10321 | 1 |
| 112 | VALVE — Intake----- | 10302 | 1 |
| | VALVE — Intake (oversize .010)----- | 10322 | 1 |
| 113 | VANE — Air Governor----- | 10393 | 1 |
| 114 | WASHER — "C," Valve Keeper----- | 3291 | 2 |
| 115 | WASHER — Lock, 7/16 (Starter Pulley)----- | 3275 | 1 |
| 116 | WASHER — Spring Tension (Speed Adj. Lever)----- | 10305 | 1 |
| 117 | WASHER — Felt (Power Take-Off, Dust Seal)----- | 7443 | 1 |
| 118 | WASHER — Flat, Steel (Power Take-Off, Dust Seal)----- | 7444 | 1 |

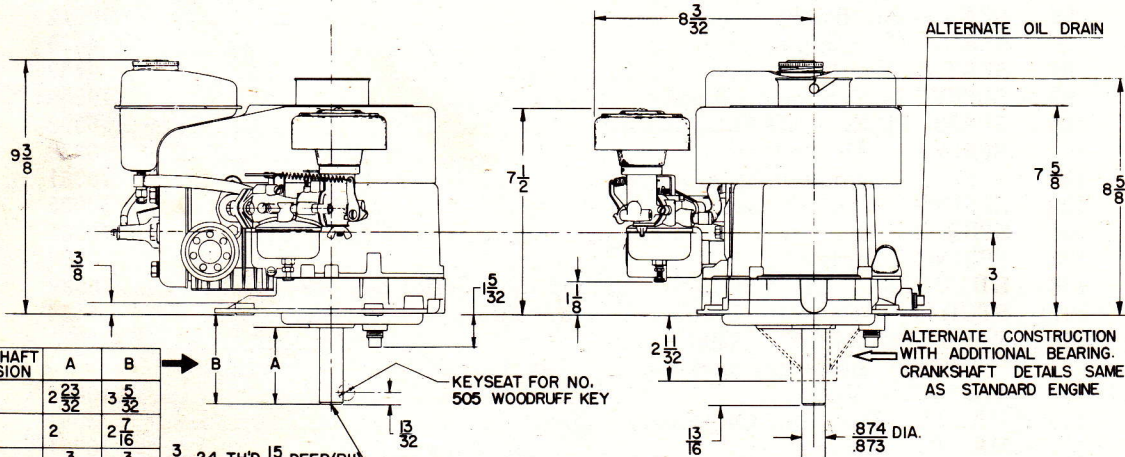


DIMENSIONAL SPECIFICATIONS AND POWER DATA

Detailed prints and engineering counsel are available. Specifications and Dimensions are subject to change without notice.



MOUNTING DIMENSIONS
LOOKING AT BOTTOM OF ENGINE.
HOLE IN DECK TO BE $6 \frac{7}{8}$ DIA.
TO CLEAR OIL SUMP.



| CRANKSHAFT EXTENSION | A | B |
|----------------------|-------------------|-------------------|
| 1 | $2 \frac{23}{32}$ | $3 \frac{5}{32}$ |
| 2 | 2 | $2 \frac{7}{16}$ |
| 3 | $\frac{3}{4}$ | $1 \frac{3}{16}$ |
| 4 | $1 \frac{3}{8}$ | $1 \frac{13}{16}$ |

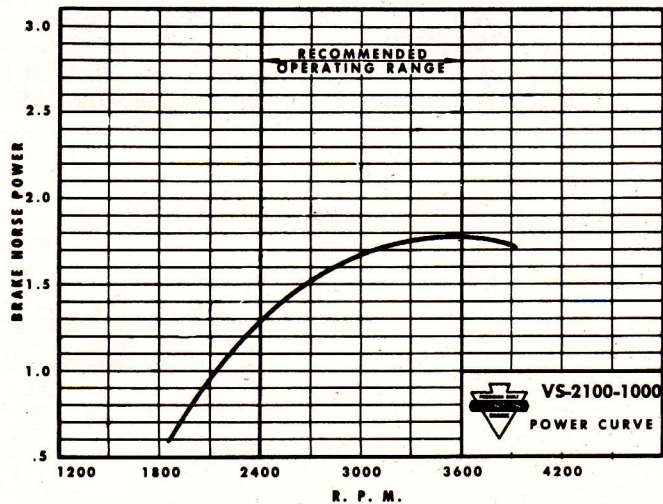
POWER DATA

The performance and power analysis figures for the Clinton Engine series show the rated Brake Horse Power developed from test-run engines. The standard engine equipped with standard air cleaner and muffler was used, in every case, for these tests and the figures have been corrected for barometer at sea level and temperature of 60° F. Production engines when shipped will develop not less than 85% of rated B.H.P.

Production engines, after run-in to reduce friction will develop not less than 95% of the rated B.H.P.

Engine power will decrease 3% for each 1,000 feet above sea level, and 1% for each 10° F. above standard temperature of 60° F.

Unless otherwise specified, governors are set to operate at 3,000 R.P.M. without load. Complete details of installations requiring continuous operation at other than recommended speeds should be referred to the factory for approval.



CABLE ADDRESS: ENGINES U. S. A.

ENGINE DIVISION OF CLINTON MACHINE CO.

MAQUOKETA, IOWA

PRINTED IN U. S. A.

CLINTON

| | | | | | |
|---------------------|---|---|---|---|---|
| S | E | R | I | E | S |
| VS-2100-1000 | | | | | |
| G E M | | | | | |

**MODEL
VARIATIONS**
**SEC. II, DIV. VS-2100-1000
PARTS CATALOG**
 Revised May, 1957
 Supersedes Sept., 1956

MODEL VARIATIONS OF VS-2100-1000 SERIES

The adaptation of Clinton Engines to a wide variety of uses results in what is known as "Model Variations." Following is the complete list of all Models produced up to issue date (shown above). Opposite each Engine Model listed are the Part Numbers and/or Assembly Numbers for the Series used IN ADDITION TO or IN PLACE OF the parts illustrated and shown on the Basic Parts List preceding this Model Variation List. Refer to other sections of this Manual when Assembly Numbers are given to find the Parts List for these assemblies.

See page (a) on "How to Identify Your Clinton Engine." Use the preceding Basic Parts List except as shown below.

| ENGINE MODEL—See page (a), "How to Identify Your Clinton Engine." | FOOTNOTES (Check page five) | BASE—ENGINE (Part Numbers Shown). Refer to Sec. IV, Div. A for further information. | CONTROL GROUP (Control Group Illustration numbers shown). Refer to Sec. III, Div. D for Parts List. | CONTROL CABLE LENGTH—Replacement cable is furnished in 72" length ONLY, cut to length shown. | CRANKSHAFT (Part Numbers Shown). Refer to Sec. IV, Div. B for details and further information. | STARTER—RECOIL. Refer to Sec. III, Div. H for Parts List. | HOUSING ASSEMBLY—BLOWER (Part Numbers Shown). Refer to Basic Parts List for corresponding part. |
|---|-----------------------------------|---|---|--|--|---|---|
| VS-2100-1100 | | | | | | 10101 | |
| VS-2100-1109 | Note 13 | 10051-A | | | | | 21017-A |
| VS-2100-1110 | Note 12 | 10050-A | | | | | |
| VS-2100-1112 | | | SK550 | 72" | | | |
| VS-2100-1113 | | | SK550 | 72" | | Yes | 21013-A |
| VS-2100-1114 | No Variation—Use Basic Parts List | | | | | | |
| VS-2100-1118 | | | | | | 10101 | |
| VS-2100-1119 | | | | | | 10101 | Yes 21013-A |
| VS-2100-1120 | Notes 3, 6, 14 | 10053-A | | | | 10107 | |
| VS-2100-1122 | | | | | | 10103 | |
| VS-2100-1130 | No Variation—Use Basic Parts List | | | | | | |
| VS-2100-1135 | Note 2 | | SK550 | 72" | | | |
| VS-2100-1146 | | | | | | Yes | 21013-A |
| VS-2100-1153 | | | SK553 | | | | |
| VS-2100-1155 | | | | | | 10109 | |
| VS-2100-1163 | | | | | | 10101 | |
| VS-2100-1164 | Note 6 | | SK550 | 72" | | | |
| VS-2100-1170 | Note 12 | 10050-A | SK550 | 72" | | | |
| VS-2100-1171 | | | | | | 10111 | |
| VS-2100-1172 | No Variation—Use Basic Parts List | | | | | | |
| VS-2100-1176 | No Variation—Use Basic Parts List | | | | | | |
| VS-2100-1178 | | | | | | 10101 | |
| VS-2100-1188 | Notes 3, 4, 8 | 10055 | | | | 10115 | |
| VS-2100-1197 | | | | | | 10103 | |
| VS-2100-1198 | Notes 4 & 7 | | | | | 10116 | Yes 21013-A |
| VS-2100-1199 | | | | | | 10116 | |
| VS-2100-1204 | | | | | | Yes | 21013-A |
| VS-2100-1206 | No Variation—Use Basic Parts List | | | | | | |
| VS-2100-1209 | | | | | | 10103 | Yes 21013-A |
| VS-2100-1211 | Notes 3, 6, 14 | 10053-A | | | | 10107 | Yes 21013-A |
| VS-2100-1214 | Note 6 | | | | | | 21013-D |
| VS-2100-1217 | | | SK553 | | | Yes | 21013-A |
| VS-2100-1219 | Note 6 | | | | | 10101 | Yes 21013-A |

CLINTON

S E R I E S
VS-2100-1000
G E M

**MODEL
VARIATIONS**

MODEL VARIATIONS OF VS-2100-1000 SERIES (Cont.)

| ENGINE MODEL | FOOTNOTES | BASE-ENGINE | CONTROL GROUP | CONTROL CABLE LENGTH | CRANKSHAFT | STARTER - RECOL | HOUSING ASSEMBLY - BLOWER |
|--------------|-----------------------------------|-------------|---------------|----------------------|------------|-----------------|---------------------------|
| VS-2100-1221 | Note 11 | | SK550 | | 10103 | Yes | 21013-A |
| VS-2100-1222 | | | | | 10101 | Yes | 21013-A |
| VS-2100-1223 | Note 6 | | SK553 | | 10101 | Yes | 21013-A |
| VS-2100-1224 | Note 6 | | SK550 | | | Yes | 21013-A |
| VS-2100-1225 | Note 12 | 10050-A | | | 10119 | Yes | 21013-A |
| VS-2100-1226 | Note 6 | | SK553 | | | | |
| VS-2100-1227 | | | | | 10120 | Yes | 21013-A |
| VS-2100-1228 | Note 6 | | SK550 | | | Yes | 21013-A |
| VS-2100-1231 | Note 6 | | SK550 | 72" | | Yes | 21013-A |
| VS-2100-1232 | | | | | | Yes | 21013-A |
| VS-2100-1233 | | | | | | Yes | 21013-A |
| VS-2100-1234 | | | | | | Yes | 21013-A |
| VS-2100-1236 | Note 12 | 10050-A | SK550 | 72" | | Yes | 21013-A |
| VS-2100-1238 | Note 12 | 10050-A | | | | Yes | 21013-A |
| VS-2100-1239 | Notes 6 & 12 | 10050-A | | | 10106 | Yes | 21013-A |
| VS-2100-1240 | Notes 11 & 12 | | | | 10102 | Yes | 21013-A |
| VS-2100-1241 | Note 11 | | | | 10101 | | |
| VS-2100-1242 | | | | | 10101 | | |
| VS-2100-1243 | Note 2 | | | | 10101 | Yes | 21013-A |
| VS-2100-1244 | Note 6 | | | | | Yes | 21013-A |
| VS-2100-1245 | | | | | | Yes | 21013-A |
| VS-2100-1246 | | | | | | Yes | 21013-A |
| VS-2100-1247 | Note 6 | | SK553 | | | Yes | 21013-A |
| VS-2100-1248 | | | | | 10103 | Yes | 21013-A |
| VS-2100-1249 | | | SK550 | | | | 21013-F |
| VS-2100-1251 | | | | | 10109 | Yes | 21013-A |
| VS-2100-1254 | | | | | 10101 | Yes | 21013-A |
| VS-2100-1255 | | | | | 10101 | Yes | 21013-A |
| VS-2100-1256 | | | | | 10101 | Yes | 21013-A |
| VS-2100-1257 | | | | | | Yes | 21013-A |
| VS-2100-1258 | Note 6 | | SK553 | | 10101 | Yes | 21013-A |
| VS-2100-1259 | Note 11 | | SK550 | | 10103 | Yes | 21013-A |
| VS-2100-1260 | | | | | 10103 | Yes | 21013-A |
| VS-2100-1261 | Notes 2, 3, 4 | 10053-A | SK553 | | 10103 | Yes | 21013-A |
| VS-2100-1262 | Note 6 | | SK550 | | | | 21013-D |
| VS-2100-1263 | Note 6 | | SK550 | | | | |
| VS-2100-1264 | | | | | 10101 | Yes | 21013-A |
| VS-2100-1265 | No Variation—Use Basic Parts List | | | | | | |
| VS-2100-1266 | No Variation—Use Basic Parts List | | | | | | |
| VS-2100-1267 | | | SK550 | | | Yes | 21013-A |
| VS-2100-1268 | Note 2 | | | | | | |
| VS-2100-1269 | Note 13 | | | | | | |
| VS-2100-1270 | | | | | 10119 | Yes | 21013-A |
| VS-2100-1271 | | | | | 10119 | Yes | 21013-A |
| VS-2100-1272 | | | | | | Yes | 21013-A |
| VS-2100-1273 | | | | | 10111 | Yes | 21013-A |

CLINTON

| | | | | | |
|---------------------|---|---|---|---|---|
| S | E | R | I | E | S |
| VS-2100-1000 | | | | | |
| G | E | M | | | |

**MODEL
VARIATIONS**

SEC. II, DIV. VS-2100-1000
PARTS CATALOG
Revised May, 1957
Supersedes Sept., 1956

MODEL VARIATIONS OF VS-2100-1000 SERIES (Cont.)

| ENGINE MODEL | FOOTNOTES | BASE—ENGINE | CONTROL GROUP | CONTROL CABLE LENGTH | CRANKSHAFT | STARTER—RECOIL | HOUSING ASSEMBLY—BLOWER | BLOCK ASSEMBLY—CYLINDER |
|--------------|-----------------------------------|-------------|---------------|----------------------|------------|----------------|-------------------------|-------------------------|
| VS-2100-1274 | Note 11 | | | | 10101 | Yes | 21013-A | |
| VS-2100-1275 | Note 11 | | | | | Yes | 21013-A | |
| VS-2100-1276 | | | | | 10101 | Yes | 21013-A | |
| VS-2100-1277 | | | | | 10119 | | | |
| VS-2100-1278 | Notes 6 & 12 | 10050-A | SK550 | | | Yes | 21013-A | |
| VS-2100-1279 | Notes 6 & 12 | 10050-A | SK550 | 72" | | | | |
| VS-2100-1280 | No Variation—Use Basic Parts List | | | | | | | |
| VS-2100-1281 | | | | | | Yes | 21013-A | |
| VS-2100-1282 | Notes 3 & 12 | 10052 | SK550 | 72" | 10102 | Yes | 21013-A | |
| VS-2100-1283 | | | | | | Yes | 21013-A | |
| VS-2100-1284 | | | | | 10109 | Yes | 21013-A | |
| VS-2100-1285 | | | | | 10103 | Yes | 21013-A | |
| VS-2100-1286 | No Variation—Use Basic Parts List | | | | | | | |
| VS-2100-1287 | | | | | | Yes | 21013-A | |
| VS-2100-1288 | | | | | | Yes | 21013-A | |
| VS-2100-1289 | | | | | | Yes | 21013-A | |
| VS-2100-1290 | | | | | 10101 | Yes | 21013-A | |
| VS-2100-1291 | Note 6 | | | | 10103 | Yes | 21013-A | |
| VS-2100-1292 | Note 11 | | | | 10101 | Yes | 21013-A | |
| VS-2100-1293 | Note 6 | | SK550 | 72" | | Yes | 21013-A | |
| VS-2100-1294 | | | | | | Yes | 21013-A | |
| VS-2100-1295 | | | SK550 | | | Yes | 21013-A | |
| VS-2100-1296 | Notes 6 & 12 | 10050-A | SK550 | | | Yes | 21013-A | |
| VS-2100-1297 | Notes 3 & 6 | 10052 | SK550 | 72" | 10102 | Yes | 21013-A | |
| VS-2100-1298 | Notes 3 & 6 | | SK553 | | | Yes | 21013-A | |
| VS-2100-1299 | Notes 3 & 6 | | SK553 | | | Yes | 21013-A | |
| VS-2100-1300 | Notes 10 & 15 | | | | 10116 | Yes | 21013-A | |
| VS-2100-1301 | | | SK553 | | | Yes | 21013-A | |
| VS-2100-1302 | | | | | | Yes | 21013-A | |
| VS-2100-1303 | Note 6 | | | | 10103 | Yes | 21013-A | |
| VS-2100-1304 | | | | | | Yes | 21013-A | |
| VS-2100-1305 | Note 11 | | | | | Yes | 21013-A | |
| VS-2100-1306 | | | | | | Yes | 21013-A | |
| VS-2100-1307 | | | | | 10117 | Yes | 21013-A | |
| VS-2100-1308 | | | SK553 | | 10103 | Yes | 21013-A | |
| VS-2100-1309 | Note 12 | | SK553 | 72" | | | | 10050-A |
| VS-2100-1310 | Notes 5 & 7 | | SK553 | | | Yes | 21013-A | |
| VS-2100-1311 | Notes 11 & 13 | | | | | | | |
| VS-2100-1312 | | | SK550 | | 10101 | | | |
| VS-2100-1313 | | | SK550 | | | | | |
| VS-2100-1314 | No Variation—Use Basic Parts List | | | | | | | |
| VS-2100-1315 | No Variation—Use Basic Parts List | | | | | | | |
| VS-2100-1316 | No Variation—Use Basic Parts List | | | | | | | |
| VS-2100-1317 | | | SK553 | | | | | |
| VS-2100-1318 | | | | | | Yes | 21013-A | |
| VS-2100-1319 | Note 11 | | | | | Yes | 21013-A | |

CLINTON

S E R I E S
VS-2100-1000
G E M

**MODEL
VARIATIONS**

MODEL VARIATIONS OF VS-2100-1000 SERIES (Cont.)

| ENGINE MODEL | FOOTNOTES | BASE—ENGINE | CONTROL GROUP | CONTROL CABLE LENGTH | CRANKSHAFT | STARTER—RECOIL | HOUSING ASSEMBLY—BLOWER | BLOCK ASSEMBLY—CYLINDER |
|--------------|-----------------------------------|-------------|---------------|----------------------|------------|----------------|-------------------------|-------------------------|
| VS-2100-1320 | Notes 6 & 12 | 10050-A | SK550 | | | Yes | 21013-A | |
| VS-2100-1321 | Notes 11 & 13 | | | | | Yes | 21013-A | |
| VS-2100-1322 | Note 12 | 10050-A | SK550 | | | Yes | 21013-A | |
| VS-2100-1323 | | | | | | Yes | 21013-A | |
| VS-2100-1324 | Note 3 | 10052 | | | | Yes | 21013-A | |
| VS-2100-1325 | | | | | | Yes | 21013-A | |
| VS-2100-1326 | Notes 3 & 7 | 10052 | | | | Yes | 21013-A | |
| VS-2100-1327 | Note 15 | | | | 10123 | | | |
| VS-2100-1328 | Note 15 | | | | 10123 | | | |
| VS-2100-1329 | Note 6 | | SK553 | | | | | |
| VS-2100-1330 | Note 6 | | SK553 | | | Yes | 21013-A | |
| VS-2100-1331 | Note 4 | | | | 10123 | Yes | 21013-A | |
| VS-2100-1332 | | | | | | Yes | 21013-A | |
| VS-2100-1333 | | | | | 10101 | Yes | 21013-A | |
| VS-2100-1334 | Note 3 | 10053-A | SK553 | | 10107 | Yes | 21013-A | |
| VS-2100-1335 | | | | | | Yes | 21013-A | |
| VS-2100-1336 | | | SK550 | | 10101 | Yes | 21013-A | |
| VS-2100-1337 | Notes 3 & 7 | 10052 | | | | Yes | 21013-A | |
| VS-2100-1338 | | | | | 10123 | Yes | 21013-A | |
| VS-2100-1339 | | | | | 10123 | Yes | 21013-A | |
| VS-2100-1340 | | | SK553 | | 10103 | Yes | 21013-A | |
| VS-2100-1341 | | | | | 10103 | Yes | 21013-A | |
| VS-2100-1342 | | | SK550 | | 10101 | Yes | 21013-A | |
| VS-2100-1343 | | | | | 10101 | | | |
| VS-2100-1344 | | | | | | Yes | 21013-A | |
| VS-2100-1345 | | | SK553 | | 10101 | | | |
| VS-2100-1346 | | | SK553 | | 10101 | Yes | 21013-A | |
| VS-2100-1347 | | | | | 10101 | | | |
| VS-2100-1348 | | | SK550 | | | Yes | 21013-A | |
| VS-2100-1349 | Note 6 | | SK550 | | | Yes | 21013-A | |
| VS-2100-1350 | | | | | | Yes | 21013-A | |
| VS-2100-1351 | | | SK550 | | | | 21013-A | |
| VS-2100-1352 | Note 3 | 10053-A | SK561 | | 10107 | Yes | 21013-A | |
| VS-2100-1353 | Note 4 | | | | 10116 | Yes | 21013-A | |
| VS-2100-1354 | No Variation—Use Basic Parts List | | | | | | | |
| VS-2100-1355 | | | SK550 | 72" | 10101 | Yes | 21013-A | |
| VS-2100-1356 | Note 11 | | | | 10103 | Yes | 21013-A | |
| VS-2100-1357 | | | SK561 | | | Yes | 21013-A | |
| VS-2100-1358 | Notes 3, 11, 12 | 10052 | SK550 | | 10102 | Yes | 21013-A | |
| VS-2100-1359 | | | SK553 | | | Yes | 21013-A | |
| VS-2100-1360 | Note 2 | | SK553 | | | | | |
| VS-2100-1361 | Note 2 | | SK553 | | | Yes | 21013-A | |
| VS-2100-1362 | | | SK550 | | | Yes | 21013-A | |
| VS-2100-1363 | | | | | | Yes | 21013-A | |
| VS-2100-1364 | | | SK561 | | | Yes | 21013-A | |
| VS-2100-1365 | Notes 3, 11, 12, 16 | 10052 | SK550 | | 10102 | | | |

CLINTON

S E R I E S
VS-2100-1000
G E M

**MODEL
VARIATIONS**

**SEC. II DIV. VS-2100-1000
PARTS CATALOG**
Revised May, 1957
Supersedes Sept., 1956

MODEL VARIATIONS OF VS-2100-1000 SERIES (Cont.)

- NOTE 1—Manifold (Intake) #10311 and Lever (Speed Control) #7465 used.
- NOTE 2—Elbow, Street, (90°) #7274 used.
- NOTE 3—Plugs #5649 and #5655 used.
- NOTE 4—Wire Assembly, Ignition Shorting #5567-A, Screw #5443, and Grommet #10366 used.
- NOTE 5—Screw #7249 used in lieu of #5634.
- NOTE 6—Muffler #4500 used in lieu of #3639.
- NOTE 7—Air Cleaner Assembly #4512-A used in lieu of #6331.
- NOTE 8—Adapter #10306, (three) Screw & Lockwasher Assemblies #3229-G, Screw & Lockwasher Assembly #5648-G and (three) Nut #3249 used on this model.
- NOTE 9—Carburetor Assembly #14004 used in lieu of #14008.
- NOTE 10—Carburetor and Horn Assembly #C-14097 used as alternate on some series.
- NOTE 11—Muffler Assembly #6342 used in lieu of #3639.
- NOTE 12—Use #4552 Protector Oil Seal—Additional Part.
- NOTE 13—Use #7465 Lever Speed Control—Additional Part.
- NOTE 14—Use #10337 Spring—Air Governor.
- NOTE 15—Use #4546-A Air Cleaner.
- NOTE 16—Use #5711-A Flywheel.