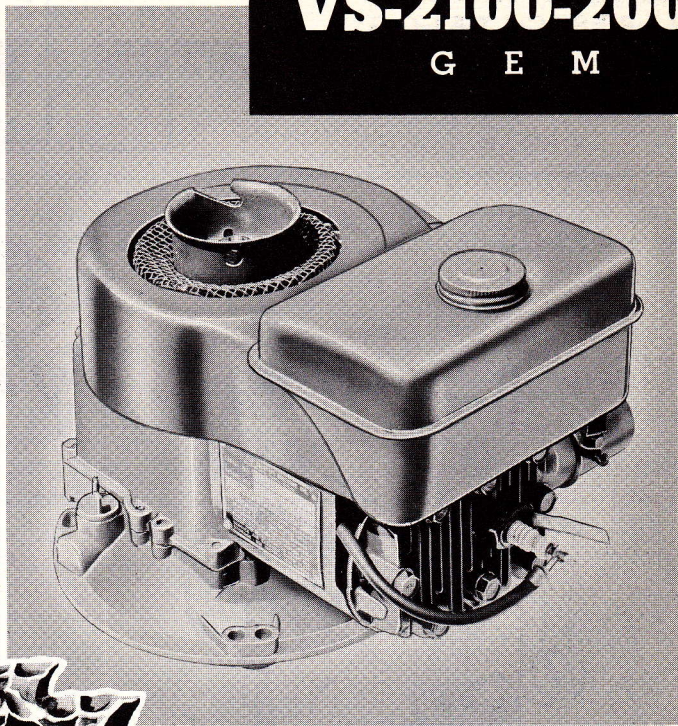
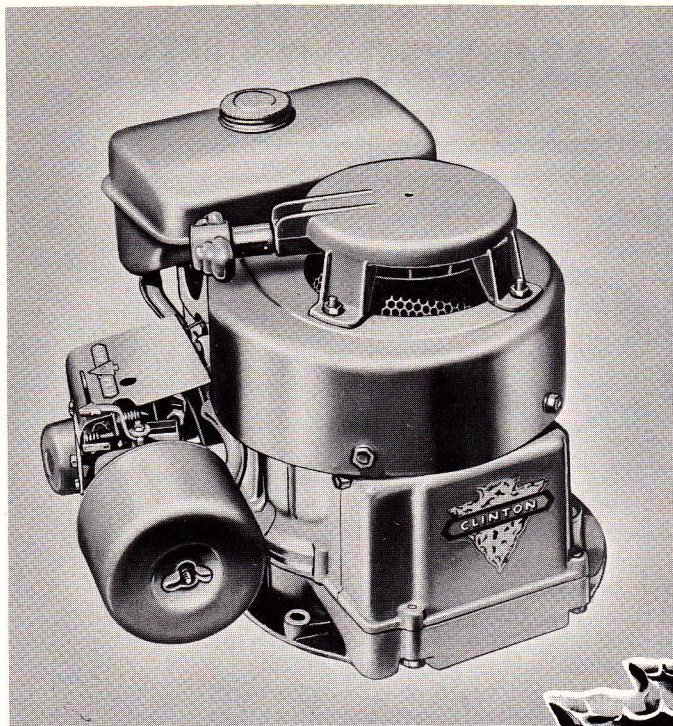


S E R I E S  
**VS-2100-2000**  
 G E M



A Wide Range of Models are Made By

**CLINTON**

For Farm, Home and Industrial Use.

**ENGINES**

VS-2100-2000

| H.P. | R.P.M. |
|------|--------|
| 1.2  | 2200   |
| 1.7  | 2800   |
| 2.0  | 3600   |

## GENERAL SPECIFICATIONS

| Model        | Type       | Description    | Starter        | Weight  |
|--------------|------------|----------------|----------------|---------|
| VS-2100-2000 | Air-Cooled | Vertical Shaft | Rope or Recoil | 19 lbs. |

**BORE:** 2 $\frac{3}{8}$ "

**STROKE:** 1 $\frac{5}{8}$ "

**TYPE:** Single cylinder, L-Head, air-cooled.

**AIR-COOLED:** Large capacity, curved vane blower cast integral with flywheel. Air passes through deep fins to maintain correct operating temperature.

**PISTON DISPLACEMENT:** 7.2 cu. inches.

**IGNITION:** Very high voltage, built-in flywheel magneto for faster starting. Moisture and dust proof with fully enclosed ignition points. Safety stop switch.

**SPARK PLUG:** 14 m.m.

**LUBRICATION:** Positive pressure supplied by automotive type oil pump.

**CARBURETOR:** Full float feed with idle and high speed adjustment.

**GOVERNOR:** Adjustable pneumatic type, statically balanced.

**MAIN BEARINGS:** Bronze and aluminum.

**CRANKSHAFT:** Ductile iron. Counterweights and cam gear drive integral with shaft.

**CONNECTING ROD:** I-Beam, aluminum alloy with extra large bearings.

**PISTON:** Aluminum alloy, Clinton-engineered for efficient combustion.

**PISTON RINGS:** Two compression and one oil control. Treated surfaces.

**VALVES:** Forged steel. Exhaust valve provided with heat-resistant alloy head.

**VALVE SEATS:** Alloy inserts.

**VALVE TAPPETS:** Hardened and ground.

**CYLINDER AND CRANKCASE:** Die cast cylinder block and crankcase with large amount of cooling area for cool operation. A close-grained cast iron liner is die cast in block.

**CYLINDER HEAD:** Aluminum, removable with extra deep cooling fins.

**OIL FILLER:** Conveniently located for easy check of oil level and for filling.

**AIR CLEANER:** Dry filter type.

**FUEL TANK:** 1-quart capacity, with gasoline strainer and shut-off.

**OIL RESERVOIR:** One and one-fourth pints capacity.

**DIRECTION OF ROTATION:** Counterclockwise, viewed from power take-off shaft side.

**FINISH:** Red heat-resisting enamel. Other colors available upon request.

### STANDARD EQUIPMENT

Standard equipment includes: Cast iron cylinder liner, replaceable bearing, positive high speed stop throttle lever with universal throttle control, dry-type horizontal air cleaner, high voltage dust and moisture-proof flywheel magneto, float feed carburetor, fuel tank, low back pressure muffler, blower housing screen, crankshaft machined to accommodate clutch and blade assembly, rope starter, splash-proof gas tank cap. Safety stop switch.

### SPECIAL EQUIPMENT

Special equipment includes: Remote throttle cable and controls, recoil starter, shorting terminal for remote stop hookup, electric starter, deluxe muffler, special paint finishes, fuel pump, Touch N' Go controls, kerosene conversion, angular muffler, resistor spark plug, special crankshaft extensions. (Quotations available on request.)



WORLD'S LARGEST MANUFACTURER OF A COMPLETE LINE OF AIR-COOLED GASOLINE ENGINES

**CLINTON ENGINES PROVIDE POWER**

FOR FARM • HOME • INDUSTRIAL EQUIPMENT

PRINTED IN U.S.A.



**CLINTON**

|                     |   |   |   |   |   |
|---------------------|---|---|---|---|---|
| S                   | E | R | I | E | S |
| <b>VS-2100-2000</b> |   |   |   |   |   |
| G E M               |   |   |   |   |   |

**BASIC  
TYPE**

SEC. II, DIV. VS-2100-2000  
**PARTS CATALOG**  
 Revised April, 1958  
 Supersedes October, 1957

There are two Basic Types of the VS-2100-2000 Engines covered by this Basic Parts List. Parts not used on all types are noted. These types are shown as follows: Serial Number Suffix "A"—referred to as Type A; Serial Number Suffix "B"—referred to as Type B.

MODEL VARIATIONS follow this Basic Parts List.

**NOTE:** See page "a" on "How to Identify Your Clinton Engine."

## BASIC PARTS LIST

| Ref. No. | PART DESCRIPTION  | Part No. | Quantity |
|----------|---|----------|----------|
| 1        | AXLE ASSEMBLY — Camshaft (includes pin) -----   | 10310-A  | 1        |
| 2        | BASE ASSEMBLY — Engine -----<br>NOTE: Base includes Ref. No. 98.  | 10000-A  | 1        |
| 3        | BEARING — Main (Sleeve) -----   | 10380    | 1        |
| 4        | BLOCK ASSEMBLY — Cylinder -----<br>NOTE: Assembly includes Ref. Nos. 3, 97.   | 10205-A  | 1        |
| 5        | BRACKET — Slide Mounting (used on Type B) -----   | 10399    | 1        |
| 6        | BREAKER POINTS ASSEMBLY -----<br>NOTE: Assembly includes Ref. Nos. 30, 82, 96.  | P5543    | 1        |
| 7        | BREATHER ASSEMBLY -----   | 6354     | 1        |
| 8        | BUSHING — Air Vane -----  | 7239     | 2        |
| 9        | CAM — Magneto Breaker -----   | 5707     | 1        |
| 10       | CAMSHAFT ASSEMBLY -----   | 10008-A  | 1        |
| 11       | CAP & GASKET ASSEMBLY — Fuel -----  | 4517-A   | 1        |
| 12       | CAP & GASKET ASSEMBLY — Oil Filler -----  | 5096-1   | 1        |
| 13       | CARBURETOR ASSEMBLY — Clinton -----<br>For complete identification of carburetors, refer to Section III,<br>Div. A, page 2. | 14048    | 1        |
| 14       | CLEANER ASSEMBLY — Air (used on Type A) -----<br>NOTE: Assembly includes Ref. Nos. 20, 29, 63, 87.                          | 2000-A   | 1        |
| 15       | CLIP — Spring Anchor (used on Type B) -----   | 14358    | 1        |
| 16       | CLIP — Spring, Slide Retaining (used on Type A) -----   | 10088    | 1        |
| 17       | COIL ASSEMBLY — Magneto (With Laminations) -----  | P5593-B  | 1        |
|          | COIL — Magneto (Without Laminations) -----  | P5593-A  | 1        |
| 18       | CONDENSER — Magneto -----   | P5599-A  | 1        |
| 19       | CONNECTOR — 90°, Flexible Fuel Line (Carburetor) -----  | 5052     | 1        |
| 20       | COVER — Air Cleaner (Types A and B) -----   | 2003     | 1        |
| 21       | COVER — Dust, Magneto Breaker Points -----  | 10382    | 1        |
| 22       | COVER — Valve Chamber -----   | 10323    | 1        |
| 23       | CRANKSHAFT -----  | 10100    | 1        |
| 24       | DECAL — Arrowhead -----   | 3579     | 1        |
| 25       | DECAL — Horsepower -----  | 3444     | 1        |
| 26       | DECAL — Throttle Control -----  | 3487     | 1        |
| 27       | DEFLECTOR ASSEMBLY — Air -----  | 10006-A  | 1        |
| 28       | DEVICE — Shorting Clip (Spark Plug) -----   | 3499     | 1        |
| 29       | ELEMENT — Air Cleaner (Types A and B) -----   | 2132     | 1        |
| 30       | FELT — Lubrication, Cam Follower -----  | P5504    | 1        |
| 31       | FLYWHEEL ASSEMBLY -----   | 5597-A   | 1        |
| 32       | GASKET — Paper (Carburetor to Manifold) -----   | 7168     | 1        |
| 33       | GASKET — Air Cleaner to Carburetor -----  | 3990     | 1        |
| 34       | GASKET — Air Cleaner Cover (used on Type B) -----   | 21056    | 1        |
| 35       | GASKET — Cylinder Head -----  | 10253    | 1        |
| 36       | GASKET — Engine Base (.015 thick) -----<br>NOTE: .010 thick Gasket Available  | 10254    | 1        |
|          |   | 10254-1  |          |
| 37       | GASKET — Asbestos (Manifold to Block) -----   | 7149     | 1        |
| 38       | GASKET — Cover, Dust (Breaker Points) -----   | 10250    | 1        |
| 39       | GASKET — Oil Filler Cap -----   | 5097     | 1        |
| 40       | GASKET — Spark Plug -----   | 3115     | 1        |
| 41       | GASKET — Valve Chamber Cover -----  | 10251    | 1        |
|          | GASKET KIT — Engine Overhaul -----  | 6329     | 1        |
| 42       | GROMMET — Magneto (Breaker Lead Wire) -----   | 10367    | 1        |
| 43       | HEAD — Cylinder -----   | 10011    | 1        |

**CLINTON**

S E R I E S  
**VS-2100-2000**  
 G E M

**BASIC  
 TYPE**

**BASIC PARTS LIST (Continued)**

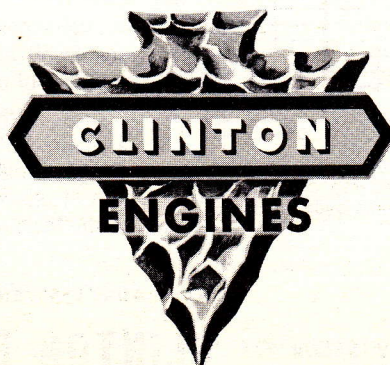
| Ref. No. | PART DESCRIPTION   | Part No. | Quantity |
|----------|--|----------|----------|
| 44       | HOUSING ASSEMBLY — Blower  | 21007-A  | 1        |
| 45       | KEY — Flywheel   | 10339    | 1        |
| 46       | LEAD — Hi-Tension, Magneto   | P2055    | 1        |
| 47       | LINE — Flexible, Fuel  | 6316     | 1        |
| 48       | LINE — Flexible, Breather  | 10352    | 1        |
| 49       | LINE — Oil Distributor (Oil Pump)  | 10390    | 1        |
| 50       | LINK — Carburetor to Air Vane  | 10020    | 1        |
| 51       | LOCK — Double, Connecting Rod Screw  | 10318    | 1        |
| 52       | MANIFOLD — Carburetor  | 10091    | 1        |
| 53       | MUFFLER  | 3639     | 1        |
| 54       | NUT — Hex.; 7/16-20 (Starter Pulley)   | 5476     | 1        |
| 55       | NUT — Lock (Muffler)   | 4425     | 1        |
| 56       | NUT & LOCKWASHER ASSEMBLY — 1/4-28 Hex. (Carb. Mtg.)   | 3255-A   | 2        |
| 57       | PIN — Camshaft Axle  | 10392    | 1        |
| 58       | PIN — Drive (used on Type B)   | 9004     | 2        |
| 59       | PIN — Pivot, Air Vane Governor   | 7238     | 1        |
| 60       | PIN — Stop (Slide) (used on Type A)  | 10089    | 1        |
| 61       | PIN — Wrist  | 6024     | 1        |
| 62       | PISTON — Standard  | 31001    | 1        |
|          | PISTON ASSEMBLY — Standard   | 31001-A  | 1        |
|          | NOTE: Assembly includes Ref. Nos. 61, 62, 71, 72, 73, 74.  |          |          |
|          | NOTE: Piston Assemblies are available in the following oversizes:<br>.005, .010, .020, .030 and .040. Order by Part Number and specify oversize. |          |          |
| 63       | PLATE — Air Cleaner Mounting (used on Type A)  | 2001-B   | 1        |
|          | PLATE — Air Cleaner Mounting (used on Type B)  | 21055-A  | 1        |
| 64       | PLATE — Name   | 6530     | 1        |
| 65       | PLATE — Valve Spring Retainer  | 10013    | 1        |
| 66       | PLUG — 3/8 N.P.T. (Oil Drain)  | 5627     | 1        |
| 67       | PUMP ASSEMBLY — Oil  | 10385-A  | 1        |
| 68       | PULLEY — Starter   | 3299     | 1        |
| 69       | RETAINER — Air Vane  | 4430     | 1        |
| 70       | RETAINER — Valve Spring  | 3028     | 2        |
| 71       | RING — Compression, Standard   | 6026     | 1        |
| 72       | RING — Oil, Standard   | 6006     | 1        |
| 73       | RING — Retainer, Wrist Pin   | 6034     | 2        |
| 74       | RING — Scraper, Standard   | 6027     | 1        |
|          | RING SET — Standard  | 10023    | 1        |
|          | NOTE: Ring Set includes Ref. Nos. 71, 72, 74.  |          |          |
|          | NOTE: Ring Sets are also available in the following oversizes:<br>.005, .010, .020, .030 and .040. Order by Part Number and specify oversize.    |          |          |
| 75       | RIVET (used on Type B)   | 5825     | 1        |
| 76       | RIVET — Tubular (4—Name Plate, 2—Flywheel Shield)  | 5469     | 6        |
| 77       | ROD ASSEMBLY — Connecting  | 10002-A  | 1        |
|          | NOTE: Assembly includes Ref. Nos. 51, 80.  |          |          |
| 78       | ROPE ASSEMBLY — Starter  | 4266     | 1        |
| 79       | SCREEN — Revolving   | 7187     | 1        |
| 80       | SCREW — H.H.C., 1/4-28 x 1 1/4 (Connecting Rod Cap)  | 3235     | 2        |
| 81       | SCREW — P.H.S.T., #4-40 x 1/4 (Coil to Laminations)  | 5641     | 1        |
| 82       | SCREW — R.H.M., #6-32 x 1/4 (Breaker Points Terminal)  | 5664     | 1        |
| 83       | SCREW — H.H. Slotted S.T., #8-32 x 3/4 (2—Dust Cover, 2—Deflector to Block)  | 5644     | 4        |
| 84       | SCREW — H.H.C., 1/4-28 x 1 (Carburetor to Manifold)  | 7205     | 1        |
| 85       | SCREW — H.W.H., 5/16-18 x 1 7/8 (2—Tank Bracket, 6—Cylinder Head)  | 5654     | 8        |
| 86       | SCREW — H.H.C., 8-32 x 7/16, Lock Thread (Air Cleaner Plate to Carburetor)   | 5812     | 2        |
| 87       | SCREW & L'WASHER ASS'Y — B.H.M., 8-32 x 3/8 (Air Cleaner Cover to Plate)   | 5457-A   | 1        |

**CLINTON**

|                     |   |   |   |   |   |
|---------------------|---|---|---|---|---|
| S                   | E | R | I | E | S |
| <b>VS-2100-2000</b> |   |   |   |   |   |
| G E M               |   |   |   |   |   |

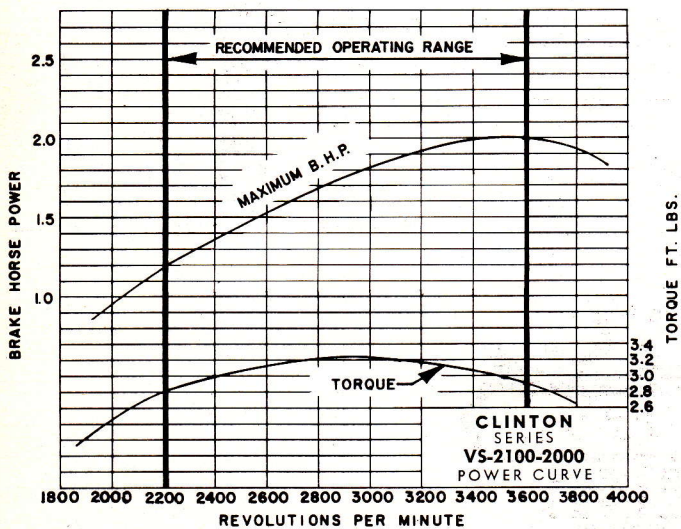
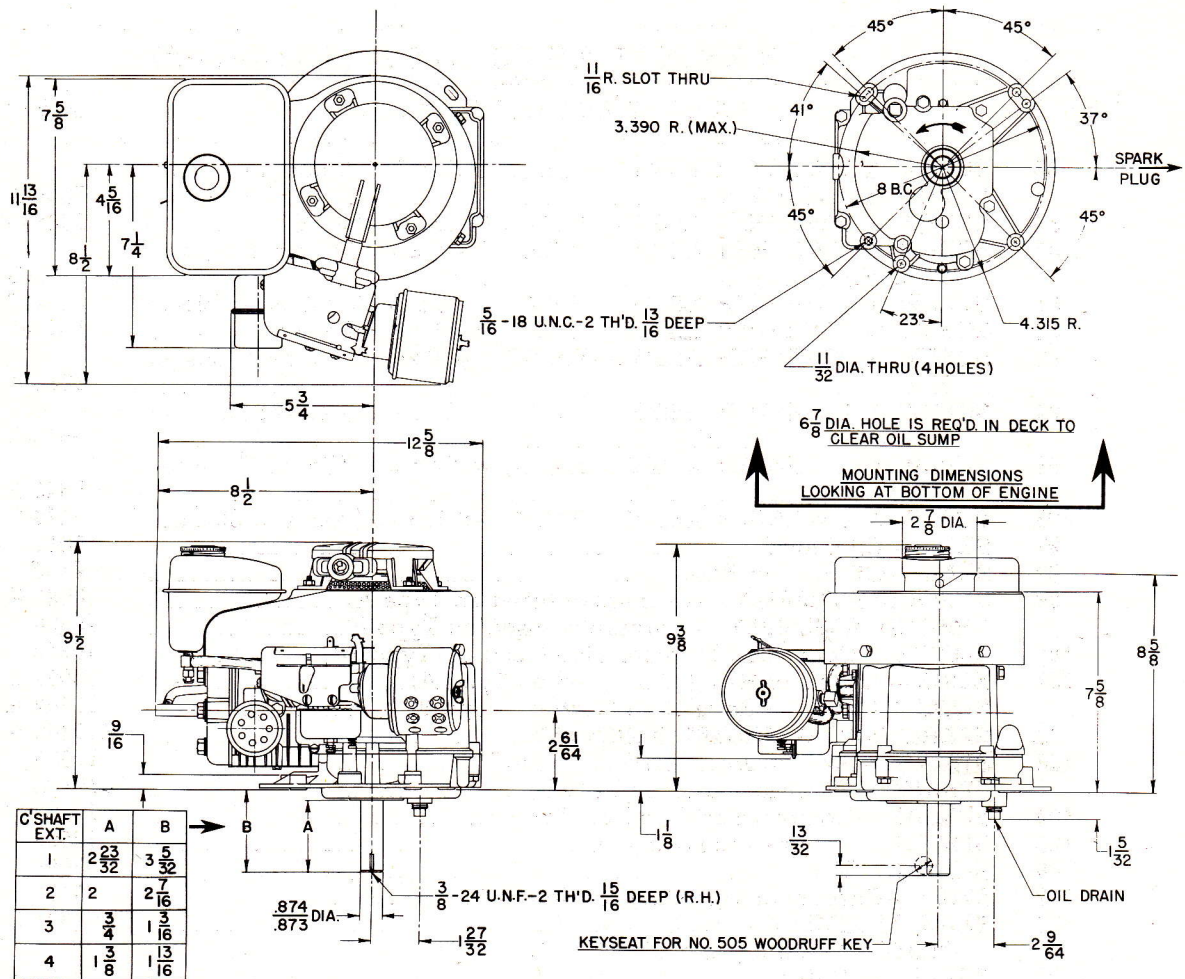
**BASIC  
TYPE**
**SEC. II, DIV. VS-2100-2000**  
**PARTS CATALOG**  
 Revised April, 1958  
 Supersedes October, 1957
**BASIC PARTS LIST (Continued)**

| Ref. No. | PART DESCRIPTION  | Part No. | Quantity |
|----------|---|----------|----------|
| 88       | SCREW & L'WASHER ASS'Y — H.H.C., 8-32 x 3/8 (Shroud to Carburetor and Manifold) | 5644-A   | 3        |
| 89       | SCREW & L'WASHER ASS'Y — H.H.C., 1/4-20 x 1/2 (Block)                           | 3205-G   | 2        |
| 90       | SCREW & L'WASHER ASS'Y — H.H.C., 1/4-20 x 5/8 (Blower Housing to Block)         | 3632-G   | 2        |
| 91       | SCREW & L'WASHER ASS'Y — H.H.C., 1/4-20 x 7/8 (Manifold to Block)               | 3294-G   | 2        |
| 92       | SCREW & L'WASHER ASS'Y — H.H.C., 1/4-20 x 1 1/4 (Base to Block)                 | 5613-G   | 7        |
| 93       | SCREW & L'WASHER ASS'Y — P.H.S.T., #10-24 x 1 (Laminations to Block)            | 5682-A   | 2        |
| 94       | SCREW & L'WASHER ASS'Y — R.H.M., #10-24 x 1/4 (Blower Housing to Tank)          | 5643-A   | 2        |
| 95       | SCREW & L'WASHER ASS'Y — H.H.C., #10-24 x 1/2 (Valve Chamber Cover)             | 5645-A   | 2        |
| 96       | SCREW & L'WASHER ASS'Y — R.H.M., #8-32 x 3/8 (Points to Block)                  | 5444-F   | 1        |
| 97       | SEAL — Oil (Block)  | 10012    | 1        |
| 98       | SEAL — Oil (Engine Base)  | 4429     | 1        |
| 99       | SHROUD ASSEMBLY — Carburetor (used on Type A)                                   | 10085-A  | 1        |
|          | SHROUD ASSEMBLY — Carburetor (used on Type B)                                   | 10400    | 1        |
| 100      | SLEEVE — Connector, Breather Line (used on Type A)                              | 10353    | 1        |
| 101      | SLIDE — Governor Regulating (used on Type A)                                    | 10087-A  | 1        |
|          | SLIDE — Governor Regulating (used on Type B)                                    | 10342-A  | 1        |
| 102      | SPARK PLUG & GASKET ASSEMBLY  | K16303-A | 1        |
| 103      | SPRING — Air Governor (used on Type A)  | 10090    | 1        |
|          | SPRING — Extension (used on Type B)   | 10406    | 1        |
| 104      | SPRING — Compression (used on Type B)   | 10373    | 1        |
| 105      | SPRING — Compression (Air Vane)   | 10005    | 1        |
| 106      | SPRING — Valve  | 3068     | 2        |
| 107      | STUD — Carburetor Mounting to Manifold  | 6155     | 1        |
| 108      | TANK ASSEMBLY — Fuel  | 21371-D  | 1        |
|          | NOTE: Assembly includes Ref. No. 11.  |          |          |
| 109      | TAPPET — Valve  | 10009    | 2        |
| 110      | VALVE — Fuel Shut-Off, Flexible Line  | 5051     | 1        |
|          | CONNECTOR — Fuel Line (Optional) (used on Type B)                               | 5055     | 1        |
| 111      | VALVE — Exhaust   | 10301    | 1        |
|          | VALVE — Exhaust (oversize .010)   | 10321    | 1        |
| 112      | VALVE — Intake  | 10302    | 1        |
|          | VALVE — Intake (oversize .010)  | 10322    | 1        |
| 113      | VANE — Air Governor   | 10393    | 1        |
| 114      | WASHER — "C" (Valve Keeper)   | 3291     | 2        |
| 115      | WASHER — Spring Tension (Starter Pulley)  | 4119     | 1        |
| 116      | WASHER — Flat, Steel (Muffler)  | 7444     | 1        |



# DIMENSIONAL SPECIFICATIONS AND POWER DATA

Clinton Machine Company will supply detailed prints and engineering counsel upon request. Specifications and Dimensions are subject to change without notice.



## CLINTON POWER DATA

The performance and power analysis figures for the Clinton Engine series show the rated Brake Horse Power developed from test-run engines. The standard engine equipped with standard air cleaner and muffler was used, in every case, for these tests and the figures have been corrected for barometer at sea level and temperature of 60° F. Production engines when shipped will develop not less than 85% of rated B.H.P.

Production engines, after run-in to reduce friction will develop not less than 95% of the rated B.H.P.

Engine power will decrease 3 1/2 % for each 1,000 feet above sea level, and 1% for each 10° F. above standard temperature of 60° F.

Unless otherwise specified, governors are set to operate at 3,400 R.P.M. (plus or minus 100 R.P.M.) without load. Complete details of installations requiring continuous operation at other than recommended speeds should be referred to the factory for approval.

CABLE ADDRESS: ENGINES U. S. A.



ENGINE DIVISION OF **CLINTON ENGINES CORPORATION**

MAQUOKETA, IOWA

FORMERLY: CLINTON MACHINE CO.

PRINTED IN U.S.A.

**CLINTON**

|                     |   |   |   |   |   |
|---------------------|---|---|---|---|---|
| S                   | E | R | I | E | S |
| <b>VS-2100-2000</b> |   |   |   |   |   |
| G E M               |   |   |   |   |   |

**MODEL VARIATIONS**

**SEC. II, DIV. VS-2100-2000**  
**PARTS CATALOG**  
 Revised January, 1959  
 Supersedes March, 1958

## MODEL VARIATIONS OF VS-2100-2000 SERIES

The adaptation of Clinton Engines to a wide variety of uses results in what is known as "Model Variations." Following is the complete list of all Models produced up to issue date (shown above). Opposite each Engine Model listed are the Part Numbers and/or Assembly Numbers for the Series used IN ADDITION TO or IN PLACE OF the parts illustrated and shown on the Basic Parts List preceding this Model Variations List. Refer to other sections of this Manual when Assembly Numbers are given to find the Parts List for these assemblies.

See page (a) on "How to Identify Your Clinton Engine." Use the preceding Basic Parts List except as shown below.

| <b>ENGINE MODEL</b> —See page (a), "How to Identify Your Clinton Engine."                              | <b>FOOTNOTES</b> (Check page three).   | <b>BASE—ENGINE</b> (Part Numbers Shown). Refer to Sec. IV, Div. A for further information. | <b>CONTROL GROUP</b> (Control Group Illustration Numbers Shown). Refer to Sec. III, Div. D for Parts List. | <b>CONTROL CABLE LENGTH</b> —Replacement cable is furnished in 72" length ONLY, cut to length shown. | <b>CRANKSHAFT</b> (Part Numbers Shown). Refer to Sec. IV, Div. B for details and further information. | <b>STARTER—RECOIL</b> . Refer to Sec. III, Div. H for Parts List. |
|--|--|--|--|--|---|---|
| <b>HOUSING ASSEMBLY—BLOWER</b> (Part Numbers Shown). Refer to Basic Parts List for corresponding part. | <b>MUFFLER OR MANIFOLD</b> (Part Numbers Shown). Refer to Illustrated Basic Parts List for corresponding part. |  |  |  |   |   |
| <b>VS-2100-2103</b>  |  |  |  |  |   | Yes 21013-A   |
| <b>VS-2100-2104</b>  | No Variation—Use Basic Parts List  |  |  |  |   |   |
| <b>VS-2100-2105</b>  |  |  |  |  |   | Yes 21013-A   |
| <b>VS-2100-2106</b>  | Notes 1 & 2  |  |  | 72"  |   | Yes 21013-A   |
| <b>VS-2100-2107</b>  |  |  |  | 72"  |   | Yes 21013-A   |
| <b>VS-2100-2108</b>  | Notes 1 & 2  |  |  |  |   | Yes 21013-A   |
| <b>VS-2100-2109</b>  | Notes 1 & 2  |  |  |  |   | Yes 21015-A   |
| <b>VS-2100-2110</b>  |  |  |  | 72"  |   | 4500  |
| <b>VS-2100-2111</b>  |  |  |  | 72"  |   | Yes 21013-A 4500  |
| <b>VS-2100-2120</b>  |  |  |  |  | 10101   |   |
| <b>VS-2100-2121</b>  | No Variation—Use Basic Parts List  |  |  |  |   |   |
| <b>VS-2100-2122</b>  | Notes 1 & 2  |  |  |  |   |   |
| <b>VS-2100-2123</b>  | Notes 1 & 2  |  |  |  |   | Yes 21013-A   |
| <b>VS-2100-2124</b>  | Note 2   |  |  |  |   | Yes 21013-A   |
| <b>VS-2100-2125</b>  |  |  |  |  |   | Yes 21013-A 6342  |
| <b>VS-2100-2126</b>  | Note 2   |  |  |  |   | Yes 21013-A   |
| <b>VS-2100-2127</b>  | Notes 1 & 2  |  |  |  |   | Yes 21013-A   |
| <b>VS-2100-2128</b>  | Notes 1 & 2  |  |  |  |   | Yes 21015-A   |
| <b>VS-2100-2129</b>  | Notes 1 & 2  |  |  |  |   | Yes 21015-A   |
| <b>VS-2100-2130</b>  | Notes 3 & 4  | 10052  |  |  | 10102   | Yes 21013-A 6342  |
| <b>VS-2100-2131</b>  | Notes 4 & 5  | 10053-A  |  |  | 10103   |   |
| <b>VS-2100-2132</b>  |  |  |  |  |   | Yes 21013-A   |
| <b>VS-2100-2133</b>  | No Variation—Use Basic Parts List  |  |  |  |   |   |
| <b>VS-2100-2134</b>  | Notes 1 & 2  |  |  |  |   | Yes 21015-A   |
| <b>VS-2100-2135</b>  | Notes 1 & 2  |  |  |  |   |   |
| <b>VS-2100-2136</b>  | Notes 1 & 2  |  |  |  |   | Yes 21013-A   |
| <b>VS-2100-2137</b>  |  |  |  |  | 10101   | Yes 21013-A   |
| <b>VS-2100-2138</b>  |  |  |  |  | 10119   |   |
| <b>VS-2100-2139</b>  |  |  |  |  | 10119   | Yes 21013-A   |
| <b>VS-2100-2140</b>  |  |  |  |  |   | Yes 21011-A   |
| <b>VS-2100-2141</b>  | Note 2   |  |  |  |   | Yes 21013-A   |
| <b>VS-2100-2142</b>  | Notes 1 & 2  |  |  |  |   | Yes 21013-A   |
| <b>VS-2100-2143</b>  | Notes 6 & 7  |  |  |  | 10108   | Yes 21013-A   |

**CLINTON**

**S E R I E S**  
**VS-2100-2000**  
**G E M**

**MODEL  
VARIATIONS**

**MODEL VARIATIONS OF VS-2100-2000 SERIES (Cont.)**

| ENGINE MODEL | FOOTNOTES            | BASE ENGINE | CONTROL GROUP | CONTROL CABLE LENGTH | CRANKSHAFT | STARTER—RECOIL | HOUSING ASSEMBLY—BLOWER | MUFFLER OR MANIFOLD |
|--------------|----------------------|-------------|---------------|----------------------|------------|----------------|-------------------------|---------------------|
| VS-2100-2144 | Notes 1 & 2          |             |               |                      | 10101      | Yes            | 21015-A                 |                     |
| VS-2100-2145 | Note 4               |             |               |                      |            | Yes            | 21013-A                 | 4500                |
| VS-2100-2146 |                      |             |               |                      |            | Yes            | 21013-A                 |                     |
| VS-2100-2147 | Notes 1 & 2          |             |               |                      |            | Yes            | 21013-A                 |                     |
| VS-2100-2148 | Notes 1 & 2          |             |               |                      | 10101      | Yes            | 21015-A                 |                     |
| VS-2100-2149 | Note 2               |             |               |                      | 10101      |                |                         |                     |
| VS-2100-2150 | Notes 1 & 2          |             |               |                      | 10101      | Yes            | 21013-A                 | 6342                |
| VS-2100-2151 |                      |             |               |                      |            | Yes            | 21013-A                 |                     |
| VS-2100-2152 | Note 4               | 10052       |               |                      | 10103      |                |                         | 4500                |
| VS-2100-2153 |                      |             |               |                      | 10101      |                |                         |                     |
| VS-2100-2154 |                      |             |               |                      | 10101      | Yes            | 21013-A                 |                     |
| VS-2100-2155 |                      |             |               |                      |            | Yes            | 21013-A                 |                     |
| VS-2100-2156 | Note 1               |             |               |                      |            | Yes            | 21013-A                 |                     |
| VS-2100-2157 | Notes 1 & 3          |             |               |                      | 10125      | Yes            | 21013-A                 | 6342                |
| VS-2100-2158 | Note 1               |             |               |                      |            | Yes            | 21013-A                 |                     |
| VS-2100-2159 | Notes 2, 7, 8, 9, 10 | 90186       |               |                      | 10103      | Yes            | 10313-B                 |                     |
| VS-2100-2160 | Note 1               |             |               |                      |            | Yes            | 21013-A                 |                     |
| VS-2100-2162 |                      |             |               |                      | 10103      | Yes            | 21013-A                 |                     |
| VS-2100-2163 |                      |             |               |                      | 10101      | Yes            | 21013-A                 |                     |
| VS-2100-2164 | Note 1               |             |               |                      |            | Yes            | 21013-A                 |                     |
| VS-2100-2165 | Note 1               |             |               |                      |            | Yes            | 21013-A                 |                     |
| VS-2100-2166 | Note 1               |             |               |                      | 10101      | Yes            | 21013-A                 |                     |
| VS-2100-2167 | Note 11              |             |               |                      |            | Yes            | 21013-A                 |                     |
| VS-2100-2168 | Notes 1, 4, 12       | 10057       |               |                      | 10126      | Yes            | 21013-A                 |                     |
| VS-2100-2169 | Note 1               |             |               |                      |            | Yes            | 21013-A                 | 6342                |
| VS-2100-2170 | Note 5               |             |               |                      |            |                |                         |                     |
| VS-2100-2171 | Note 5               |             |               |                      |            | Yes            | 21013-A                 |                     |
| VS-2100-2172 | Notes 1 & 4          | 10052       |               |                      |            | Yes            | 21013-A                 |                     |
| VS-2100-2173 | Note 11              |             |               | 72"                  |            | Yes            | 21013-A                 |                     |
| VS-2100-2174 | Note 11              |             |               |                      |            | Yes            | 21013-A                 | 6342                |
| VS-2100-2175 | Notes 8, 9, 13       |             |               |                      | 10103      | Yes            | 21013-A                 | 6342                |
| VS-2100-2176 | Note 1               |             |               |                      | 10103      | Yes            | 21013-A                 |                     |
| VS-2100-2177 |                      |             |               |                      |            |                |                         | 4500                |
| VS-2100-2178 |                      |             |               |                      |            | Yes            | 21013-A                 | 4500                |
| VS-2100-2179 | Note 1               |             |               |                      | 10101      | Yes            | 21013-A                 |                     |
| VS-2100-2180 | Note 1               |             |               |                      | 10101      | Yes            | 21013-A                 |                     |
| VS-2100-2181 | Note 3               | 10050-A     |               |                      |            |                |                         | 6342                |
| VS-2100-2182 | Note 3               | 10050-A     |               |                      |            | Yes            | 21013-A                 | 6342                |
| VS-2100-2183 |                      |             |               |                      |            | Yes            | 21013-A                 |                     |
| VS-2100-2184 | Note 2               |             |               |                      |            | Yes            | 21013-A                 |                     |
| VS-2100-2185 | Notes 4 & 12         | 10057       |               |                      | 10126      |                |                         |                     |
| VS-2100-2186 |                      |             |               |                      |            | Yes            | 21013-A                 |                     |
| VS-2100-2187 | Note 1               |             |               |                      | 10130      |                |                         |                     |
| VS-2100-2188 | Notes 1 & 9          |             |               |                      | 10130      | Yes            | 21013-A                 |                     |
| VS-2100-2189 | Notes 9 & 16         |             |               |                      | 10101      | Yes            | 21013-A                 |                     |
| VS-2100-2190 |                      |             |               |                      | 10132      | Yes            | 21013-A                 |                     |



**CLINTON**

|                     |   |   |   |   |   |
|---------------------|---|---|---|---|---|
| S                   | E | R | I | E | S |
| <b>VS-2100-2000</b> |   |   |   |   |   |
| G E M               |   |   |   |   |   |

**MODEL  
VARIATIONS**

SEC. II, DIV. VS-2100-2000  
PARTS CATALOG  
Revised January, 1959  
Supersedes March, 1958

---



---

**MODEL VARIATIONS OF VS-2100-2000 SERIES (Cont.)**

---



---

| ENGINE MODEL | FOOTNOTES                         | BASE ENGINE | CONTROL GROUP | CONTROL CABLE LENGTH | CRANKSHAFT | STARTER—RECOIL | HOUSING ASSEMBLY—BLOWER | MUFFLER OR MANIFOLD |
|--------------|-----------------------------------|-------------|---------------|----------------------|------------|----------------|-------------------------|---------------------|
| VS-2100-2191 | Notes 9 & 16                      |             |               |                      | 10101      | Yes            | 21013-A                 | 6342                |
| VS-2100-2192 | Notes 4, 14, 15                   | 10053-B     |               |                      | 10115      |                |                         |                     |
| VS-2100-2193 | Notes 9, 16, 17                   |             |               |                      |            | Yes            | 21013-A                 |                     |
| VS-2100-2194 | Note 2                            |             |               |                      |            | Yes            | 21013-A                 |                     |
| VS-2100-2195 | Note 9                            |             |               |                      | 10101      | Yes            | 21013-A                 | 6342                |
| VS-2100-2500 | No Variation—Use Basic Parts List |             |               |                      |            |                |                         |                     |

NOTE 1—Use #14060 Carburetor, #10347-A Shroud Assembly, #10087-A Slide Assembly, #5723-B Wire Assembly, #10334 Insulator, #P-5566 Grommet, and #5644 Screw.

NOTE 2—Use #3851 Clamp and #5806-A Screw & L'Washer.

NOTE 3—Use #4558 Protector, Oil Seal.

NOTE 4—Use #5649 Plug and #5655 Plug.

NOTE 5—Use #7274 Elbow, 90°.

NOTE 6—Use #5711-A Flywheel.

NOTE 7—Use #21077-A Bracket, #21078-A Air Cleaner, #5812 Screw (2), #3216-A Screw & L'Washer, #10352 Tube, Breather, and #10353 Sleeve.

NOTE 8—Use #10362-A Wire Assembly, #14290 Grommet, #5647 Screw, #10364 Clip, Ignition Shorting.

NOTE 9—Use #14059 Carburetor, #10342-D Slide Assembly, #31403-A Shroud Assembly, #31407 Bracket, #5838-A Screw & L'Washer (2).

NOTE 10—Use #90188-A Shroud Assembly, #5097 Gasket, #90190-A Cup Assembly, Oil Filler, #5838-A Screw & L'Washer.

NOTE 11—Use #5051 Valve, #10357 Clamp.

NOTE 12—Refer Below-Deck Electric Starter, Sec. III, Div. N.

NOTE 13—Use #10320 Knob, #5444-A Screw & L'Washer.

NOTE 14—Use #10306 Adapter, #3229-G Screw & L'Washer (3), #3249 Nut (3), #5648-G Screw & L'Washer—Additional Parts.

NOTE 15—Use #5567-A Wire Ass'y, Ign. Shorting, #5566 Grommet, #5644 Screw, #10336 Grommet.

NOTE 16—Use #5727-A Wire Assembly, Ign. Shorting.

NOTE 17—Use #4546-A Air Cleaner, #3991-1 Horn, Air, #5677 Screw (2), #5906 Washer, #7249 Screw, #7044 Nut, Wing.

