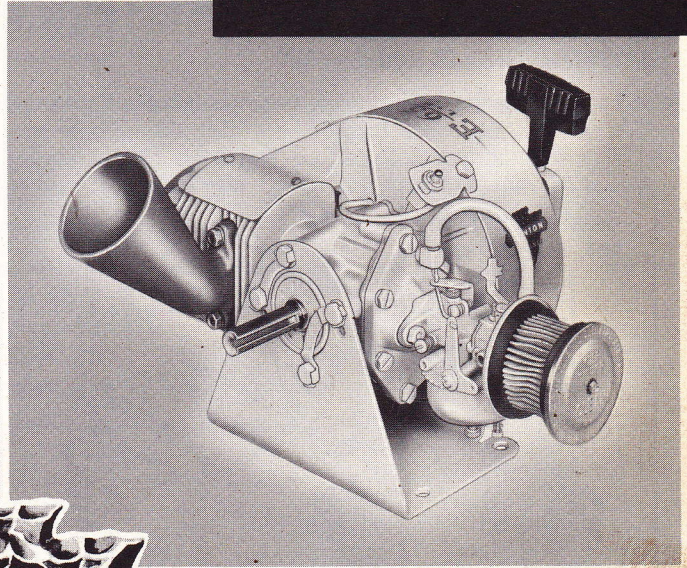
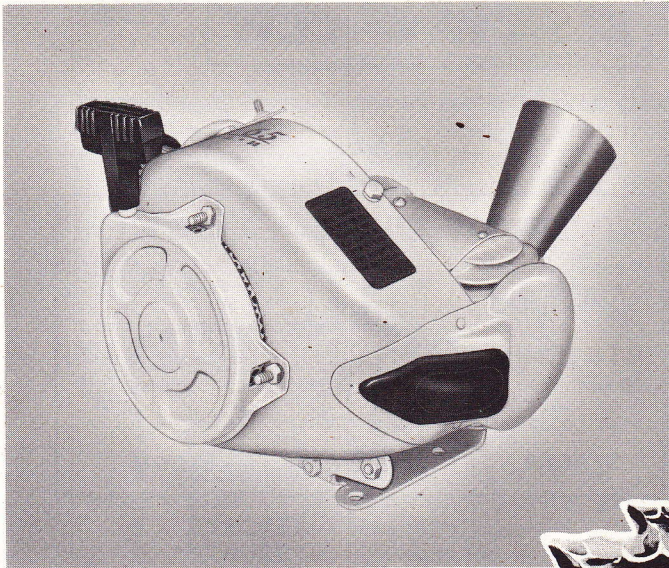


S E R I E S
E65-CW & CCW



A Wide Range of Models are Made By



For Farm, Home and Industrial Use.

CW—Clockwise

CCW—Counterclockwise

	H.P.	R.P.M.	H.P.	R.P.M.
E65-CW	3.4	3500	5.0	5500
E65-CCW	4.3	4500	5.2	6500

GENERAL SPECIFICATIONS

Model	Type	Description	Starter	Weight
E65-CW and CCW	Air Cooled	Horizontal Shaft	Recoil	15½ lbs.

ENGINE: Clinton 2-cycle, 1-cylinder, air-cooled.

BORE: 2½".

STROKE: 1½".

CUBIC INCH DISPLACEMENT: 5.76.

FUEL: Oil and gasoline mixed.

SPARK PLUG: Champion H10J or equal.

SPARK PLUG GAP: .025 inches.

POINT GAP: .020 inches.

IGNITION TIMING: Fixed.

TYPE OF VALVE: Reed.

IDLING SPEED: Approx. 1800-2200 RPM.

TYPE OF BEARING: Needle and Ball.

OPERATING SPEED: Approx. 4800-5000 RPM.

TYPE OF CARBURETION: Diaphragm and float.

FUEL RATIO: ¾ pint of SAE No. 30 to 1 gallon gasoline for first five hours. Ratio then changed to ½ pint SAE No. 30 to 1 gallon gasoline.

RECOMMENDED GASOLINE: Good grade regular.

RECOMMENDED OIL GRADE: SAE No. 30 (outboard).

TYPE OF IGNITION: High Tension Flywheel Magneto.

TYPE OF STARTER: Recoil.

STANDARD EQUIPMENT

Standard equipment includes: Cast iron cylinder liner, replaceable bearing, air cleaner, specially designed dust and moisture-proof high voltage flywheel magneto, muffler, blower housing screen. Safety stop switch and recoil starter.

SPECIAL EQUIPMENT

Special equipment includes: Positive action (no slip) centrifugal clutch with ¾"—12-tooth sprocket, 2-quart capacity gas tank. Positive acceleration type foot throttle control.



WORLD'S LARGEST MANUFACTURER OF A COMPLETE LINE OF AIR-COOLED GASOLINE ENGINES

CLINTON ENGINES PROVIDE POWER

FOR FARM • HOME • INDUSTRIAL EQUIPMENT

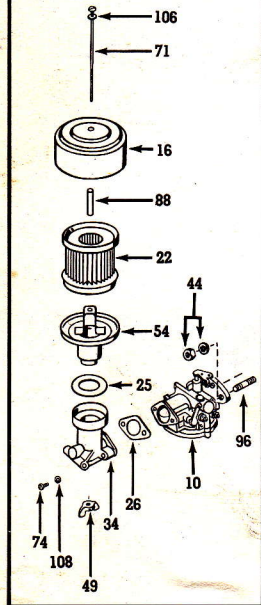
PRINTED IN U.S.A.

CLINTON

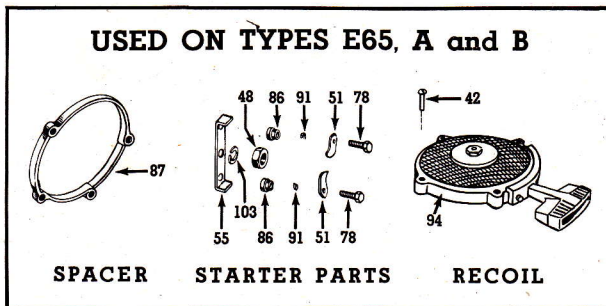
**S E R I E S
 E65-CW & CCW**

**BASIC
 TYPE**

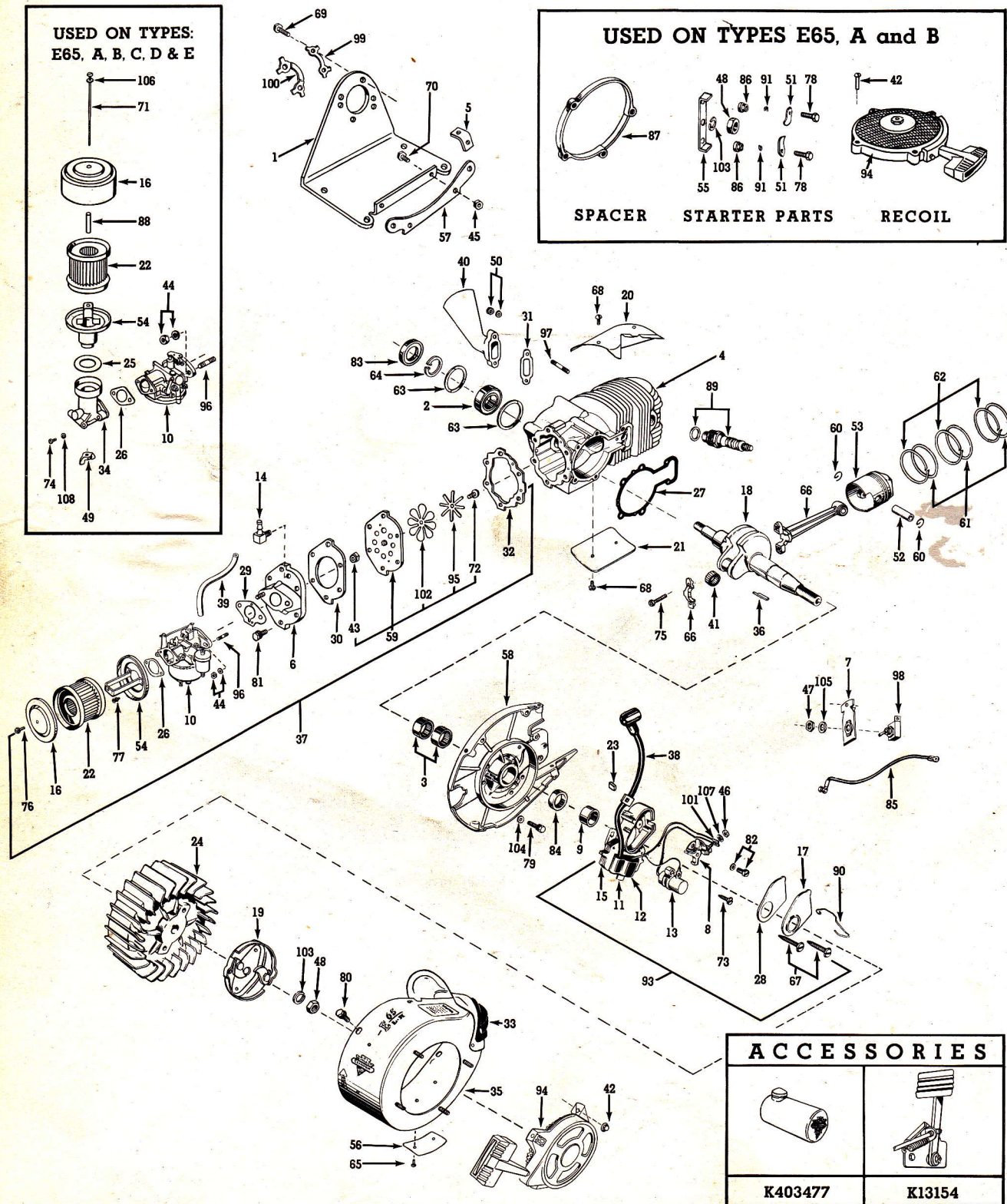
**USED ON TYPES:
 E65, A, B, C, D & E**



USED ON TYPES E65, A and B



SPACER STARTER PARTS RECOIL



ACCESSORIES

K403477	K13154

CLINTON

S E R I E S
E65-CW & CCW

**BASIC
TYPE**

SEC. II, DIV. E65-CW and CCW
PARTS CATALOG
 Revised February, 1960
 Supersedes October, 1959
 (File before Sec. II, 100 Series)

There are six Basic Types of the E65-CW & CCW Series Engines covered by this Basic Parts List. Parts not shown on all types are noted. These types are shown as follows: Serial Number Suffix "A"—referred to as Type A; Serial Number Suffix "B"—referred to as Type B; Serial Number Suffix "C"—referred to as Type C; Serial Number Suffix "D"—referred to as Type D, etc.

NOTE: See page "a" on "How to Identify Your Clinton Engine."

BASIC PARTS LIST

Ref. No.	PART DESCRIPTION	Part No.	E65-CCW (Left Hand)	E65-CW (Right Hand)
1	BASE — Mounting	403176	1	1
2	BEARING — Ball Block	3670	1	1
3	BEARING — Needle, Bearing Plate	820	2	2
4	BLOCK — Cylinder (includes Ref. Nos. 2 and 63)	401832	1	1
5	BRACKET — Mounting Base	403166	2	2
6	BRACKET — Induction (used on Types A, B, C, D, & E)	403538	1	1
	BRACKET — Induction (used on Type E65)	403173	1	1
	BRACKET — Induction (used on Type F)	403790	1	1
7	BRACKET — Mounting, Shorting Switch	90563	1	1
8	BREAKER ASSEMBLY	P5735	1	1
9	CAM — Magneto Breaker	5751	1	
	CAM — Magneto Breaker	402967		1
10	CARBURETOR — Tillotson HL-44a	C402735	1	1
	CARBURETOR — Brown 3CP	C402850	1	1
	CARBURETOR — Tillotson HL13A	C401042	1	1
	CARBURETOR — Brown CS15	C403686	1	1
	CARBURETOR — LMG140X	403691	1	1
11	CLIP — Core	P5734	1	1
12	COIL ASSEMBLY	P5770	1	1
13	CONDENSER	P5736	1	1
14	CONNECTOR — Induction Bracket (used on Type F)	5052	1	1
15	CORE & BREAKER BOX ASSEMBLY (includes Ref. No. 11)	P5732	1	1
16	COVER — Air Cleaner (used on Types E65, A, B, C, D, & E)	21072	1	1
	COVER — Air Cleaner (used on Type F)	2130	1	1
17	COVER — Breaker Box	P5743	1	1
18	CRANKSHAFT	403171	1	
	CRANKSHAFT	403170		1
19	CUP ASS'Y STARTER — (used on Types C, D, E, & F)	403601		1
	CUP ASS'Y STARTER — (used on Types C, D, E, & F) (Refer to Sec. III, Div. H, Recoil Starters)	403626	1	
	DECAL KIT — "E65 R.H."	403810		1
	DECAL KIT — "E65 L.H."	403811	1	
20	DEFLECTOR — Air	401079	1	
	DEFLECTOR — Air	400702		1
21	DEFLECTOR — Air	2037	1	1
22	ELEMENT — Filter Air	P31442	1	1
23	FELT — Cam Wiper	P5742	1	1
24	FLYWHEEL ASSEMBLY	402799	1	
	FLYWHEEL ASSEMBLY	402801		1
25	GASKET — Air Cleaner to Air Horn (used on Types E65, A, B, C, D, & E)	10259	1	1
26	GASKET — Air Horn to Carburetor (used on Types E65, A, B, C, D, & E)	920	1	1
	GASKET — Air Cleaner to Carburetor (used on Type F)	31445	1	1
27	GASKET — Bearing Plate to Block	700743	1	1
28	GASKET — Breaker Box Cover	P5744	1	1
29	GASKET — Carb. to Ind. Brkt. (used on Types B, C, D, E, & F)	403599	1	1
	GASKET — Carb. to Ind. Brkt. (used on Type A & E65)	401092	1	1
30	GASKET — Ind. Brkt. to Reed Plate (used on E65)	403174	1	1
	GASKET — Ind. Brkt. to Reed Plate (used on Types A, B, C, D, & E)	403545	1	1
	GASKET — Ind. Brkt. to Reed Plate (used on Type F)	403792	1	1
31	GASKET — Muffler	700038	1	1

BASIC PARTS LIST (Continued)

Ref. No.	PART DESCRIPTION	Part No.	E65-CCW (Left Hand)	E65-CW (Right Hand)
32	GASKET — Reed Plate to Block	401629	1	1
	GASKET KIT	403809	1	1
33	GROMMET — Blower Housing (Rubber)	400533	1	1
34	HORN — Air Cleaner (used on Types E65, A, B, C, D, & E)	10350-C	1	1
35	HOUSING ASSEMBLY — Blower	401471	1	
	HOUSING ASSEMBLY — Blower	403343		1
36	KEY — Flywheel to Crankshaft	958	1	1
37	KIT — To Convert Types E65, A, B, C, D & E to Type F	403794	1	1
	This kit includes Ref. Nos. 6, 10, 14, 16, 22, 26, 29, 30, 32, 39, 54, 59, 76, 77 and 96.			
38	LEAD WIRE GROUP — 11 1/4" Long	403497	1	1
39	LINE — Impluse 4 3/8" Long (used on Type F)	402479	1	1
40	MUFFLER — used on Types A, B, C, D, E & F	403513	1	1
	MUFFLER — (used on Type E65) (Not Illustrated)	403197	1	1
41	NEEDLE ASSEMBLY — Wax Bonded	401027	1	1
42	NUT — Barrel 12-24 x 3/4" Starter Nut			
	(used on Types E65, A & B)	401871	4	4
	NUT — Lockwasher Starter Nut, 10-32 (used as required)	4107-A	4	4
	NUT — Starting, 12-24 (used as required)	403606	4	4
43	NUT — Lock Reed Ass'y (used on A, B, C, D, E & F)	403536	1	1
44	NUT — 1/4-28 Hex., Carburetor to Induction Bracket	145	2	2
45	NUT — 1/4-20 ESNA — (2 Mtg. Plate to Mtg. Base)			
	(2 Mtg. Brkt. to Mtg. Plate)	132	4	4
46	NUT — Hex., Terminal	P5740	1	1
47	NUT — Hex., Shorting Switch Terminal	400269	1	1
48	NUT — Hex., 7/16-20 Lock Type Flywheel	838	1	1
49	NUT — Wing, 10-24 Air Cleaner			
	(used on Types E65, A, B, C, D & E)	7044	1	1
50	NUT & WASHER ASS'Y — Muffler to Block	3255-A	2	2
51	PAWL — Starter	P700915	2	2
52	PIN — Wrist	402131	1	1
53	PISTON	403086	1	1
	Also Available in .010 Oversize	402245	1	1
	Also Available in .020 Oversize	402244	1	1
54	PLATE — Air Cleaner Mounting			
	(used on Types E65, A, B, C, D & E)	21070-A	1	1
	PLATE — Air Cleaner Mounting (used on Type F)	403584	1	1
55	PLATE — Base Pawl (used on Type E65, A and B)	700913	1	1
56	PLATE — Identification	701052	1	1
57	PLATE — Mounting Bracket to Engine Base	403168	1	1
58	PLATE ASSEMBLY — Bearing (includes Ref. Nos. 3 & 84)	400680		1
	PLATE ASSEMBLY — Bearing (includes Ref. Nos. 3 & 84)	401068	1	
59	PLATE ASSEMBLY — Reed — CW (used on Type E65)	403184		1
	PLATE ASSEMBLY — Reed — CCW (used on Type E65)	403187	1	
	PLATE ASSEMBLY — Reed — CCW & CW			
	(used on Types A, B, C, D, & E)	403534	1	1
	Includes Ref. Nos. 43, 72, 95 and 102.			
	PLATE ASSEMBLY — Reed (used on Type F)	403793	1	1
	Includes Ref. Nos. 43, 72, 95 and 102.			
60	RING — Lock, Wrist Pin	3030	2	2
61	RING — Piston, Compression	400615	3	3
	Also Available in .010 Oversize	402246	3	3
	Also Available in .020 Oversize	402247	3	3
62	RING — Piston Lock	400616	3	3
63	RING — Retainer (Bearing)	234	2	2
64	RING — Retainer (Crankshaft)	700893	1	1
65	RIVETS — Identification Plate	402204	2	2
66	ROD AND CAP ASSEMBLY — Connecting (includes No. 75)	401770	1	1
67	SCREW — 10-24 x 1" Rd. Hd. Self Tap (Mag. Ass'y to Brg. Plate)	5682-A	2	2

CLINTON**S E R I E S****E65-CW & CCW****BASIC
TYPE**

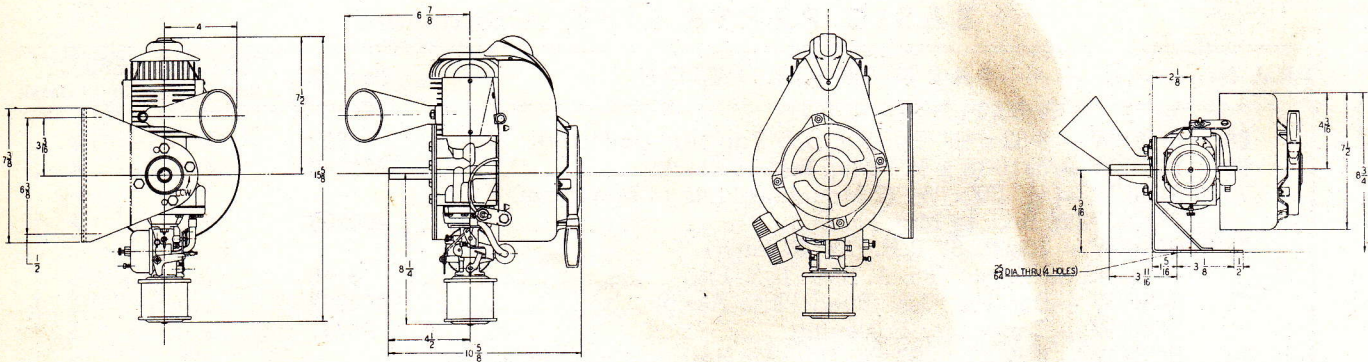
SEC. II, DIV. E65-CW and CCW
PARTS CATALOG
 Revised February, 1960
 Supersedes October, 1959
 (File before Sec. II, 100 Series)

BASIC PARTS LIST (Continued)

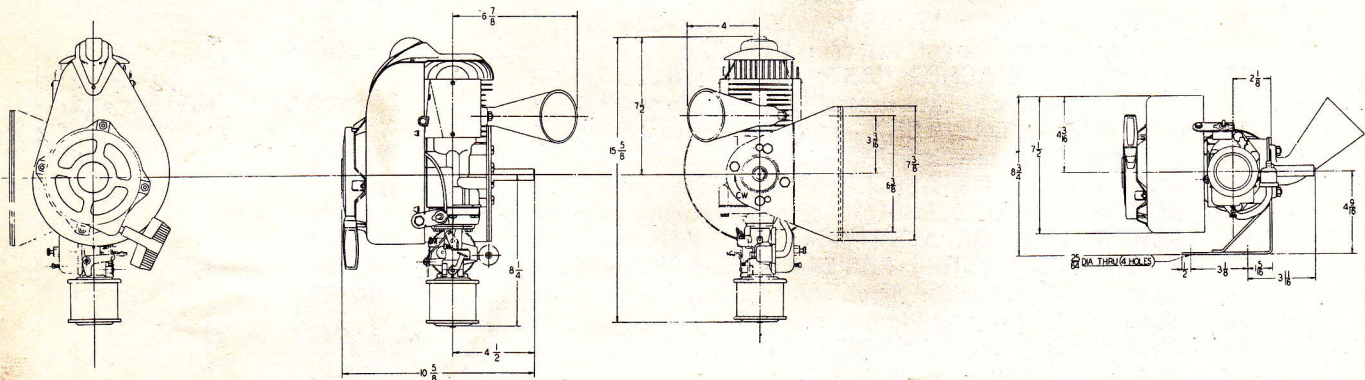
Ref. No.	PART DESCRIPTION	Part No.	E65-CW	
			(Left Hand)	(Right Hand)
68	SCREW — 8-32 x 3/8" Rd. Hd. Self Tap (Air Deflector)-----	698	4	4
69	SCREW — 5/16-18 x 3/4" (Mtg. Brkt. to Block) -----	403242	4	4
70	SCREW — 1/4"-20 x 1/2" (2 Mounting Plate to Mtg. Base) (2 Mtg. Brkt. to Mtg. Plate) -----	400266	4	4
71	SCREW — 10-24 x 6" R.H. (Air Cleaner) (used on Types E65, A, B, C, D, & E) -----	6119	1	1
72	SCREW — But. Hd. Cap (Reed Plate Ass'y) -----	403537	1	1
73	SCREW — Condenser Fastening -----	P5741	1	1
74	SCREW — 8-32 x 11/16" Fil. Hd. (Air Horn to Carb.) (used on Types E65 & A) -----	5677	2	2
	SCREW — 10-32 x 11/16" Fil. Hd. (Air Horn to Carb.) (used on Types B, C, D, & E) -----	403629	2	2
75	SCREW — Cap to Rod -----	400585	2	2
76	SCREW & L'WASHER ASS'Y — B.H.M., 8-32 x 3/8" (Air Cleaner Cover) (used on Type F)-----	5457-A	1	1
77	SCREW & L'WASHER ASS'Y — H.H.C., 8-32 x 7/16" (Air Cleaner to Carburetor) (used on Type F) -----	5673-A	2	2
78	SCREW & NYLOK ASS'Y — Pawl Plate to Flywheel (used on Types E65, A & B) -----	701028	2	2
79	SCREW & NYLOK ASS'Y — Bearing Plate to Block -----	400179	6	6
80	SCREW & NYLOK ASS'Y — Blower Housing to Bearing Plate -----	400246	4	4
81	SCREW & NYLOK ASS'Y — Ind. Brkt. to Block -----	400177	6	6
82	SCREW & L'WASHER ASS'Y — Breaker Points -----	P5737	1	1
83	SEAL — Oil, Cylinder Block -----	402407	1	1
84	SEAL — Oil, Bearing Plate -----	257-1	1	1
85	SHORTING WIRE ASSEMBLY -----	P402719	1	1
86	SPACER — Pawl Base Starter -----	700914	2	2
87	SPACER — Starter (used on Types E65, A & B) -----	401833	1	1
88	SPACER — Air Cleaner (used on Types E65, A, B, C, D, & E) --	403542	1	1
89	SPARK PLUG ASSEMBLY -----	K402237	1	1
90	SPRING — Breaker Box Cover -----	P5745	1	1
91	SPRING — Starting Pawl (used on Types E65, A & B)-----	401865		2
	SPRING — Starting Pawl (used on Types E65, A & B)-----	700929	2	
92	SPRING — Muffler Lock (used on E65) (Not Illustrated) -----	402309	2	2
93	STATOR PLATE ASSEMBLY — Magneto (includes Ref. Nos. 11, 12, 13, 15, 17, 23, 28, 46, 73, 90, 101 & 107) -----	P5731-D	1	1
94	STARTER ASSEMBLY — Recoil (used on Type E65, A & B)---	402454		1
	STARTER ASSEMBLY — Recoil (used on Type E65, A & B)---	402453	1	
	STARTER ASSEMBLY — Recoil (used on Types C, D, E & F) --	403604		1
	STARTER ASSEMBLY — Recoil (used on Types C, D, E & F) -- (Refer to Sec. III, Div. H — Parts Breakdown)	403627	1	
95	STOP — Reed (used on Types A, B, C, D, E & F) -----	403544	1	1
96	STUD — Carb. to Ind. Brkt. (1/4-20-1/4-28 x 1" Long)-----	144	2	2
97	STUD — Muffler to Block (used on Types A, B, C, D, E & F) --	5659	2	2
	STUD — Muffler to Block (used on Type E65, Not Illustrated)---	403509	2	2
98	SWITCH — Shorting (includes Ref. Nos. 47, 98 & 105) -----	4182	1	1
99	TABLOCK — Mounting Base to Block -----	641	1	1
100	TABLOCK — Mounting Base to Block -----	642	1	1
101	TERMINAL — Jamtite Breaker Points -----	P5738	1	1
102	VALVE — Rosette Reed (used on Types A, B, C, D, E & F) ----	403543	1	1
103	WASHER — Lock 7/16 I.D. Flywheel -----	3275	1	1
104	WASHER — 1/4 Plain (6 Bearing Plate to Block) (2 Carb. to Ind. Brkt.) (6 Reed Plate) (1 Bl. Hsng. to Bearing Plate)-----	5941	15	15
105	WASHER — Lock, Shorting Switch -----	400323	1	1
106	WASHER — Rubber, Air Cleaner (used on Types E65, A, B, C, D, & E) -----	5906	1	1
107	WASHER — Terminal, Breaker Points -----	P5739	1	1
108	WASHER — No. 10 Lock, Air Horn to Carburetor (used on Types E65, A, B, C, D, & E) -----	402201	2	2

DIMENSIONAL SPECIFICATIONS AND POWER DATA

Clinton Engines Corporation will supply detailed prints and engineering counsel upon request. Specifications and Dimensions are subject to change without notice.



E65-CCW — Counterclockwise Rotation • Left Hand



E65-CW — Clockwise Rotation • Right Hand

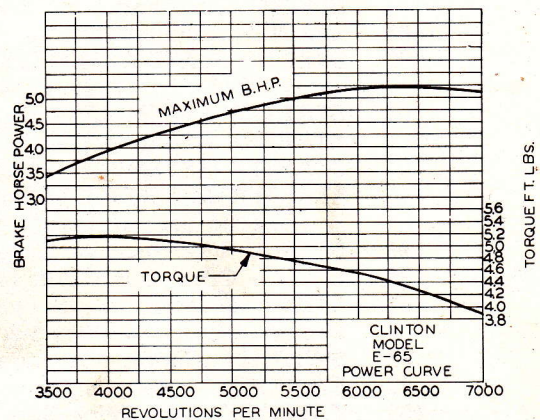
CLINTON POWER DATA

The performance and horsepower ratings shown herein are established in accordance with standard Internal Combustion Engine Institute procedures and show the rated Brake Horsepower developed from test-run engines equipped with standard air cleaner and muffler.

The ratings are corrected to Standard Conditions of sea level barometric pressure and 60° Fahrenheit ambient temperature. Engine power will decrease 3.5 per cent for each 1000 feet of elevation above sea level and 1.0 per cent for each 10° F. above 60° F. ambient temperature.

Production engines, when shipped, will develop not less than 85% of rated Brake Horsepower, and will develop not less than 95% of rated Brake Horsepower when tested after run-in to reduce friction and after clean-out of combustion chamber and adjustment of valves, carburetor, and ignition system to laboratory standards.

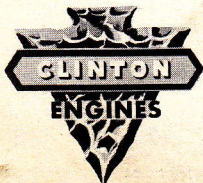
The engine should not be operated continuously at more than 80 per cent of the Maximum Brake Horsepower rating.



ACCESSORY ITEMS:	TANK — 2-quart Capacity	K403477
	CONTROL — Foot Throttle	K13154
	PAINT — Beige (15-oz. Spray Can)	K701044

Part No.

CABLE ADDRESS: ENGINES U. S. A.



ENGINE DIVISION OF **CLINTON ENGINES CORPORATION**

MAQUOKETA, IOWA

PRINTED IN U.S.A.