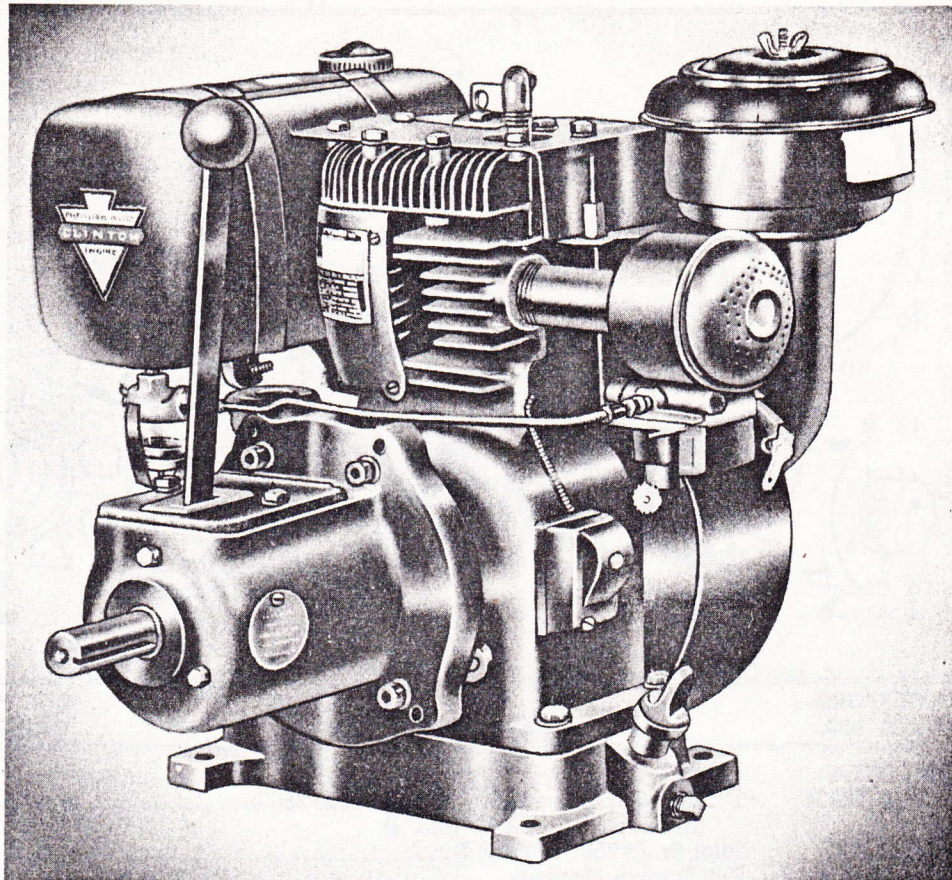




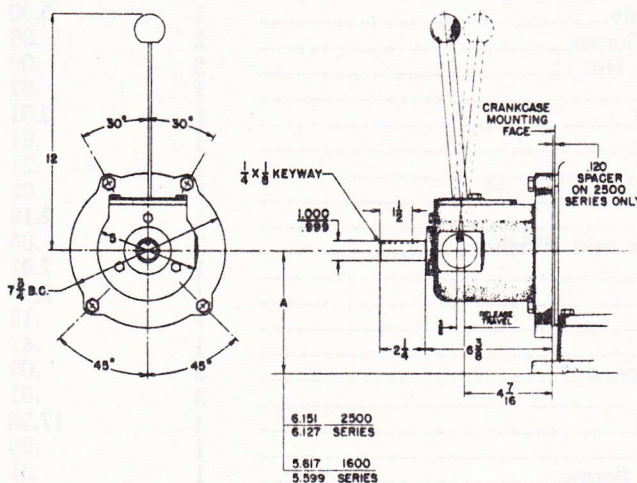
CLINTON ENGINES

SEC. III, DIV. M
FRICTION CLUTCH
Issued May, 1955



Direct Mounted Clutch with Power Take-off Shaft

Dimensional Specifications



As an accessory item, this manually operated neutral and power engagement clutch with power take-off shaft, provides dependable performance.

Mounting directly to the engine crankcase, this dry plate over-center type clutch provides complete safety in operation. The power take-off shaft is carried in a double thrust ball-bearing with no lubrication required other than occasional greasing of the bronze throw-out bearing which is accessible through a grease port.

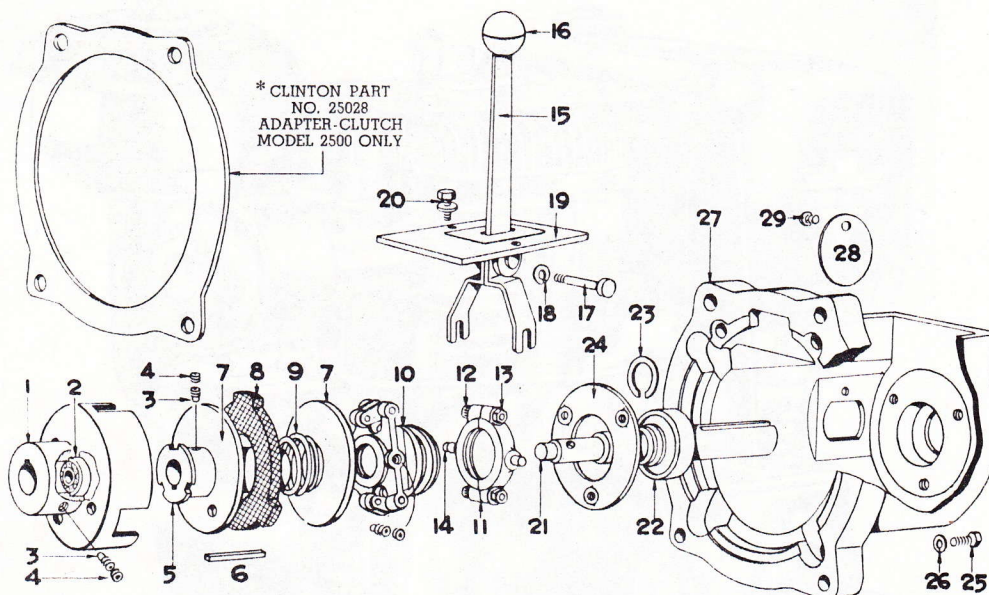
This clutch is available as a factory installed accessory on series 1600 and 2500.

NOTE: Refer to Service Bulletin 13A for warranty procedure and to Sec. VI, Div C for maintenance and service procedure.

CLINTON ENGINES



FRICTION CLUTCH ASSEMBLY NUMBER	DESCRIPTION	USED ON ENGINE SERIES
16365	Rockford Type	1600 and 2500



REF. NO.	ROCKFORD PART NO.	PART DESCRIPTION	QTY. PER CLUTCH	LIST EACH
	PTA-S3½4	Clutch Assembly		\$67.85
1	USLM-3-3004	Driving Cup Assembly (Models 1600-2500) (Includes items 2, 3 and 4)	1	8.25
2	SLM-3-3125	Pilot Br. (#7501-L1V8 N.D.)	1	1.53
3	LM-303	Set Screws (Socket)	2	.15
4	LM-303A	Set Screws (Locking)	2	.15
5	USLM-3-3002	Clutch Body (Includes items 3 and 4)	1	8.60
6	PT-1171	Key	1	.16
7	LM-311	Clutch Plate	2	1.32
8	SLM-3-3003	Drive Plate	1	1.38
9	SLM-3-3020	Separating Spring	1	.10
10	ULM-302	Release Sleeve and Lever Assembly	1	13.00
11	ULM-301	Release Bearing Assembly	1	5.90
12	LM-301-3	#10-32 x 1½" Hex. Hd. Screw	2	.06
13	LM-301-4	#22 TMO 2 Elastic Stop Nut	2	.06
14	LM-301-2	#1736 Alemite Fitting	1	.07
15	UPT-1197	Shifting Lever Assembly	1	3.91
16	PT-1217	Shifting Lever Ball	1	.81
17	PT-1160	Clevis Pin	1	.21
18	CL-7130	Retaining Ring	1	.02
19	PT-1196	Cover	1	2.19
20	CL-9231	5/16"-18 x ¾" Hd. Screw and Washer	2	.05
21	PT-1170	Drive Shaft	1	7.91
22	GR-858	#77505 NP Bearing	1	2.53
23	PT-1169	Snap Ring	1	.15
24	PT-1216	Bearing Retainer	1	.47
25	PT-1218	¼"-28 x ¾" Hex. Hd. Screw	3	.03
26	PT-580	¼" Lock Washer	3	.01
27	PT-1195	Power Take-Off Housing	1	17.38
28	PT-766	Cover	1	.26
29	PT-576	#10-24 x ¾" Button Hd. Screw	1	.01

*NOTE: Part Number 25028, Clutch Adapter (used on 2500 Engine) available from Clinton Machine Company. Refer to Model Variation sheet for information. All other parts listed hereon must be ordered from Rockford Clutch distributors.