



SERVICE BULLETIN

NO. 12

Section VIII, Division A
 Service Bulletin 12
 Issued April, 1963
 Revised January, 1968

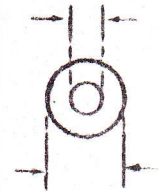
***** FLEX LINE USAGE *****

Listed are the part numbers of the various flex fuel lines and breather lines used on Clinton products. See flex line groups listed for part number and required length to cut from bulk.

Fuel line part numbers listed below can be cut from bulk number 158-25 (12.00 inches long) 158-357 (30.00 inches long), and 158-420 (50 feet long)

Part Number	Required Length	Part Number	Required Length
158-14	17 1/2"	158-28	5 5/16"
158-15	16"	158-339	7"
158-17	7 1/2"	158-340	4 3/4"
158-19	2 25/64"	158-342	27 1/2"
158-20	4 3/4"	158-357	30"
158-25	12 1/4"	158-410	11 1/2"
158-26	15"	158-420	50'

13/64" I.D.

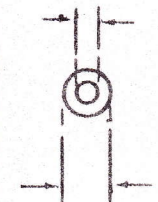


7/16" O.D.

Fuel line part numbers listed below can be cut from bulk numbers 158-323 (72.00 inches long) and 158-332 (12.00 inches long).

Part Number	Required Length	Part Number	Required Length
158-173	13 1/2"	158-240	4"
158-176	9"	158-252	7 1/2"
158-195	3 7/8"	158-255	11"
158-207	12"	158-266	7"
158-209	4 1/4"	158-277	4 5/8"
158-210	6 5/16"	158-281	4"
158-213	12"	158-282	9"
158-221	8 1/8"	158-283	10"
158-222-500	4 1/8"	158-287	4 7/8"
158-225	7 7/8"	158-288	6 1/8"
158-227	2 11/32"	158-308	10 7/8"
158-228	5 3/4"	158-323	72"
158-232	7 1/4"	158-324	12"
158-235	3 1/2"	158-328	4 7/8"
158-242	10"	158-332	12"
158-248	2 3/4"	158-375	8 1/2"

5/32" I.D.

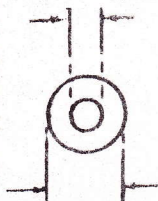


11/32" O.D.

Breather tube part numbers listed below can be cut from bulk number 158-74 (12.00 inches long).

Part Number	Required Length	Part Number	Required Length
158-51	1 7/8"	158-69	7 1/4"
158-64	6"	158-70	2 1/2"
158-65	5 1/2"	158-74	12"
158-66	3 1/4"	158-407	2 1/4"
158-67	4 1/4"	158-425	1 11/16"
158-68	5 1/8"		

1/4" I.D.



7/16" O.D.