

Clinton

CLINTON ENGINES CORPORATION

**SERIES
500
ALUMINUM
2.75 HP**

Model	Starter	PTO Shaft	Net Wt.
500-0100	Recoil	Bronze Bearing	21½ lbs.
500-0300	Recoil	Ball Thrust Bearing	21½ lbs.
500-0160	Recoil	6 to 1 Speed Reducer	27½ lbs.

GENERAL SPECIFICATIONS

Bore: 2½ inches

Stroke: 1½ inches

Piston Displacement: 5.76 cubic inches

Type: Single cylinder, horizontal crankshaft, air-cooled, 2-cycle.

Air Cooling: Powerful flywheel blower forces strong air blast through deep cooling fins on cylinder and cylinder head to maintain correct operating temperature. Rotating blower screen.

Ignition: Very high voltage at low speed. Built-in flywheel magneto for faster starting. Moisture and dust proof with fully enclosed ignition points.

Spark Plug: 14mm

Lubrication: Lubricating oil carried in fuel to all moving parts.

Carburetor: Full float feed carburetor with idle and high power mixture adjustment.

Fuel Tank: 1½ quarts capacity.

Air Cleaner: Washable high efficiency oiled non-spill polyurethane foam element.

Governor: Adjustable pneumatic type.

Governor Control: Combination fixed and variable speed.

Cylinder and Crankcase: Die-cast aluminum alloy with large amount of cooling area. A close-grained iron cylinder sleeve is cast in block.

Cylinder Head: Integral with cylinder casting.

Main Bearings: 500-0100 and 500-0160 have replaceable bronze sleeve bearings on power take-off end. Model 500-0300 has ball thrust bear-

ing on power take-off end. Bronze bearings on flywheel end, all models.

Crankshaft: Ductile iron. Counterweights integral with shaft. Bearing surfaces super finished.

Connecting Rod: I-Beam aluminum alloy with extra large bearings.

Piston: Aluminum alloy, Clinton-engineered for efficient combustion.

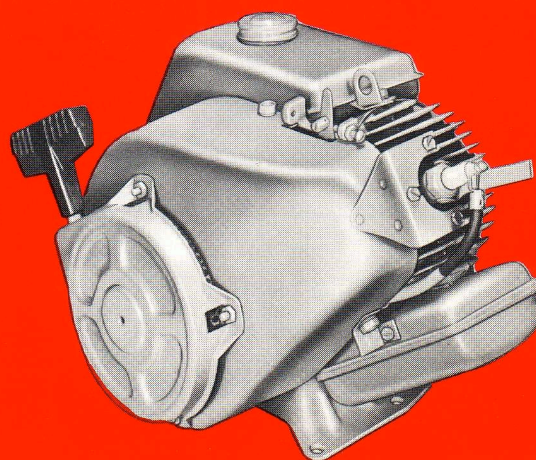
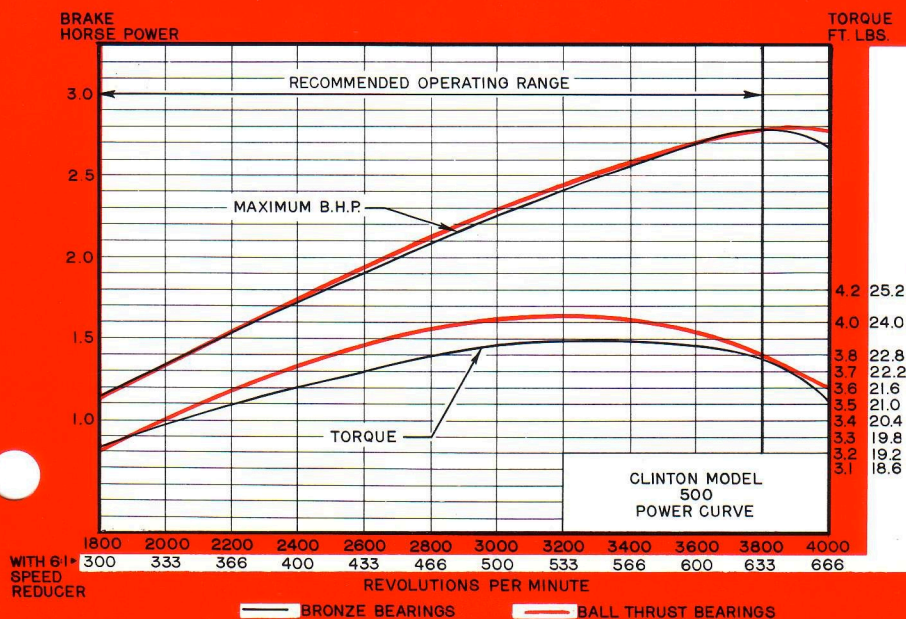
Piston Rings: Two compression rings.

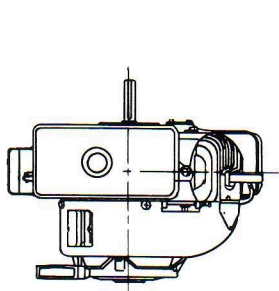
Muffler: Efficient, low back-pressure type.

Direction of Rotation: Counter-clockwise, viewed from power take-off side. (Also available in clockwise rotation without governor.)

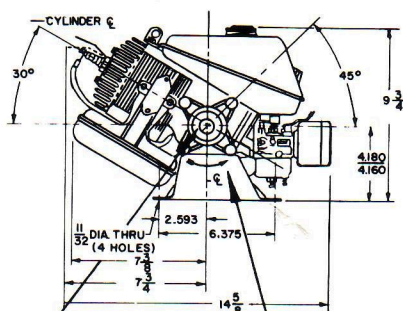
Gear Reduction: Model 500-0160 only has 6 to 1 ratio. Rotation counter-clockwise.

Finish: Painted in red heat-resistant enamel. Prime coat finish if specified.

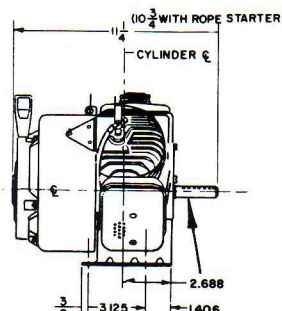




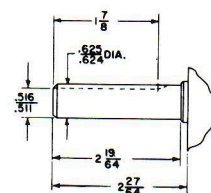
500-0100



500-0100

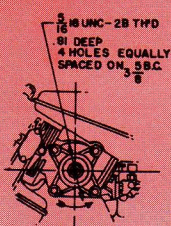


500-0100

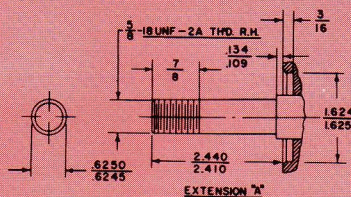


Extension "2" (std.)

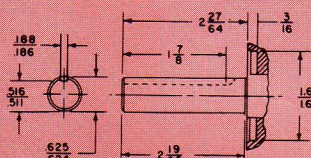
500-0100



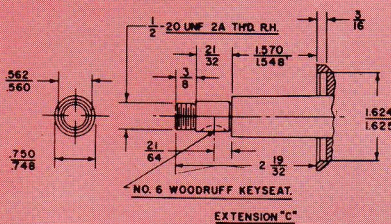
Variation for
500-0300



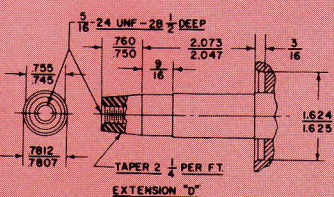
EXTENSION "A"



EXTENSION "B" (STD)

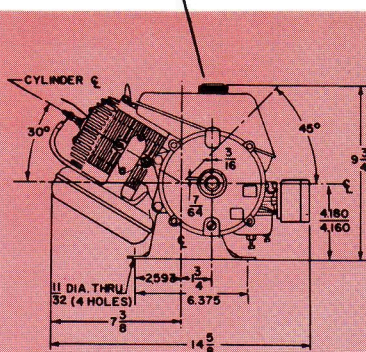


EXTENSION "C"

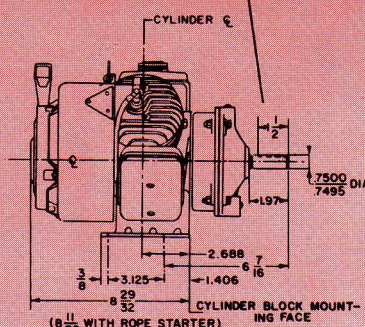


EXTENSION "D"

Crankshaft variations
for 500-0300



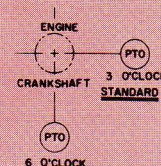
Variation for
500-0160



Variation for
500-0160

Possible mounting positions of power take off shaft in relation to the engine crank-shaft as viewed from the power take off end

Rotation—counter clock-wise



500-0160

CLINTON POWER DATA

The performance and horsepower ratings shown herein are established in accordance with standard procedures and show the rated Brake Horsepower developed from laboratory test engines.

Unless otherwise specified, the engine speed at no load is set at 3600 RPM plus or minus 200 RPM and the engine idle speed at no load is set at 1400 RPM plus or minus 200 RPM. Complete details of installations requiring operation at other than recommended speeds should be referred to the factory for approval.

The ratings are corrected to Standard Conditions of sea level barometric pressure and 60° Fahrenheit ambient temperature. Engine power will decrease 3.5 per cent for each 1000 feet of elevation above sea level and 1.0 per cent for each 10° F. above 60° F. ambient temperature.

Allow at least 20% of horsepower for safety factor under continuous operation. Clinton Engines Corporation will supply detailed prints upon request. Specifications and Dimensions are subject to change without notice.



CLINTON ENGINES CORPORATION • MAQUOKETA, IOWA

Cable Address: Engines

Reliable service at 12,000 Clinton Service Centers

Form No. OEM-1118 • L.P.Co.-Rev. 1-66 • Printed in U.S.A.